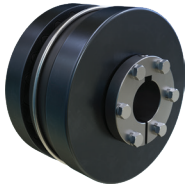
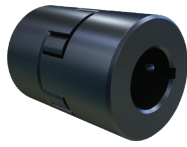




# COUPLING Nomenclature



**Quadra-Flex® Couplings**



**Jaw Couplings**



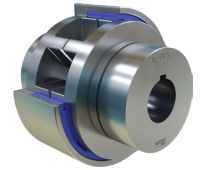
**Martin-Flex® Couplings**



**Chain Couplings**



**Blue-Flex® Grid Couplings**



**Go-Flex® Flexible Couplings**

## QUADRA-FLEX®

### FLANGE

Flange Size **5J3/4**

#### Flange

- J Sintered Steel, BTS
- S Cast Iron, BTS
- B Cast Iron, QD Bushing
- SC Spacer Coupling Flange

#### Hubs (for SC Flanges)

- H Spacer Coupling Hub
- HS Spacer Coupling Hub Short

#### Bore

Note: Bored-to-Size flanges are furnished with standard keyway and 2 setscrews unless specified otherwise

### SLEEVE

**8JEM-MD** Add if Metal Detectable

#### Sleeve Material

- JEM TPR - 1 Pc Solid, Thermoplastic
- JEMS TPR - 1 Pc Split, Thermoplastic
- EM TPR - 2 Pc, Retaining Ring
- E EPDM - 2 Pc, Retaining Ring
- N Neoprene - 2 Pc, Retaining Ring
- H Hytrel - 1 Pc Solid
- HS Hytrel - 2 Pc Split

Sleeve Size **3 to 16**

## JAW

### COUPLING HALF

Type **ML090SS1**

- ML Universal
- MS Super

#### Size

**035 to 276**

Material leave blank for steel

SS Stainless Steel

#### Bore

### SPIDER

**SRL090-MD**

Add if Metal Detectable

Size **035 to 276**

#### Spider

- SRL Buna-N
- SUL Urethane
- SHL Hytrel
- SBL Bronze

## MARTIN FLEX®

### Component

F Flange E Element

#### Size

**5 to 12**

**F5JA**

### Bore

JA, SH, SDS, SK, SF, E (small to large)

## ROLLER CHAIN

Chain Size **4016 7/8**

40 to 120

#### Tooth Count

#### Bore Size or Bushing

- TBH, TBF Taper
- JA, SH, SK, SF QD (small to large)

Add COV for Cover

4012 to 6020 Plastic (No Suffix)

Aluminium (Add -AL)

6022 to 12022 Aluminium (No Suffix)

Add CHN for Chain

## BLUE-FLEX® GRID

### COMPLETE COUPLING ASSEMBLY

**1020T107/8 x 1**

#### Size

**1020 to 1200**

#### Blue-Flex®

#### Cover Style

- 10 Horizontal
- 20 Vertical

#### Bore Sizes

### GRID & HUB

**1040T-GRID** Grid

**1050T-HUB1 7/8**

#### Hub Type

- HUB Hub
- SH Shaft Hub

#### Bore Size (Plain Bore if no Bore Size)

- 1020T to 1090T Clearance fit bore standard keyway and 2 set screws
- 1100T to 1200T Interference fit bore standard keyway and 1 setscrew

### PARTS & KITS

**1090T10-SUBASY**

#### Cover Style

- 10 Horizontal
- 20 Vertical

#### Parts & Kits

- COV Cover, Fastener Set & Seal Kit
- FAS Fastener Set
- SUBASY Cover Kit & Grid
- SEAL Seal Kit

### SPACER HUB

**1050T-CL3.5000**

#### Part

CL Spacer Hub

#### Spacer Length

## GO-FLEX®

### HUB

Go-Flex® **GF20CS 1**

#### Size

**10 to 120**

#### Material

- CS Carbon Steel
- SS Stainless Steel

#### Bore Size (Add -PHB for Plain Bore Hub)

- GF10 to GF50 Clearance fit bore standard keyway and 2 set screws
- GF60 to GF120 Interference fit bore standard keyway and 1 setscrew

### INSERT

Go-Flex® **GF20SD-INS**

#### Size

**10 to 120**

#### Insert Type

- SD Standard Duty (Red)
- MD Medium Duty (Dark Blue)
- XD Extreme Duty (Black)
- HT Hi-Temp (White)
- FG Metal Detectable (Light Blue)

#### Insert

### COVER

Go-Flex® **GF20XP-CVR**

#### Size

**10 to 120**

#### Cover Type

- SD Standard Duty (Carbon Steel)
- SS Standard Duty (Stainless Steel)
- XP Horizontal Split (Aluminium)
- VS Vertical Split
- HS Horizontal/Vertical Split

#### Cover

[martinsprocket.com](http://martinsprocket.com) - 817.258.3000