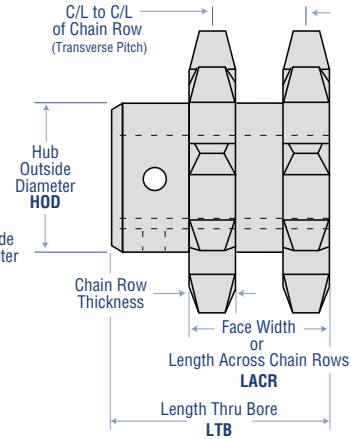
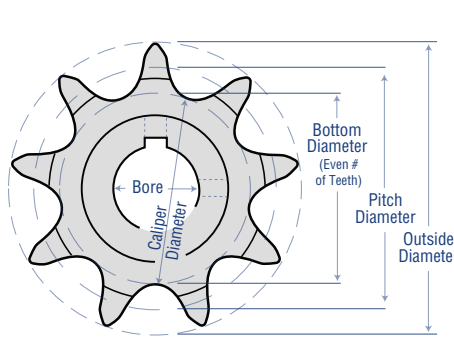
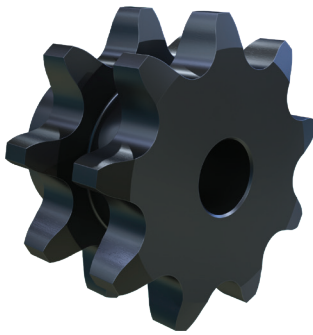




ROLLER CHAIN SPROCKET Nomenclature



of Strands

- Blank Single
- D** Double
- E** Triple
- F** Quadruple
- DS** Double Single

Chain Pitch (measured in eighths)

- 25** = 2/8 = 1/4" **60** = 6/8 = 3/4" **160** = 16/8 = 2"
- 35** = 3/8 = 3/8" **80** = 8/8 = 1" **180** = 18/8 = 2 1/4"
- 40** = 4/8 = 1/2" **100** = 10/8 = 1 1/4" **200** = 20/8 = 2 1/2"
- 41** = 4/8 = 1/2" **120** = 12/8 = 1 1/2" **240** = 24/8 = 3"
- 50** = 5/8 = 5/8" **140** = 14/8 = 1 3/4"

D 160 B 16 H 2 1/4

Bore Size

Special Instructions

- H** Hardened Teeth
- SS** Stainless Steel

of Teeth

Sprocket Type

- A** Plate Only
- B** Hub One Side
- C** Hub Both Sides
- D** Detachable Hubs
- JA, SH,...** QD
- BTB** Taper Bushed
- H, P, Q,...** MST®
- BS** Bored-To-Size

Types of Sprockets

Single Type A No Hub Ex: 40A24	Single Type B Hub One Side Ex: 60B30	Single Type C Hub Both Sides Ex: 60C17	Single Type D Detachable Hub Ex: 100D30	Type BS Bored-to-Size Ex: 50BS16 1	Single QD Ex: 35SH40	Double Type B Ex: D35B19H	Double Type C Ex: D60C72	Double Single Ex: DS40A19	Single Taper Bushed Type B Ex: 50BTB16
Double Taper Bushed Ex: D50BTB21	Double QD Ex: D80E52	Triple Type B Ex: E60B12	Triple Type C Ex: E60C72	Triple QD Ex: E60E68	Single MST® Ex: 50P24	Double MST® Ex: D80R60	Triple MST® Ex: E60Q21		

martinsprocket.com - 817.258.3000