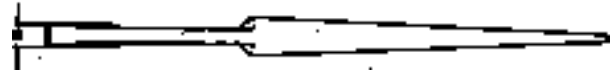


Construction Wrench 15° Angle

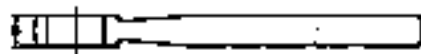
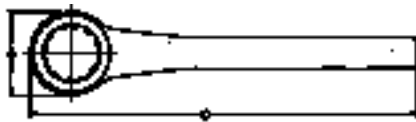
Wrench Opening	Diameter of Head		Length	Wt. Ea. Lbs.	Industrial Black	Std. Pkg. Qty.	Wrench Opening
	A	B			Part No.		
5/8	1 1/16	7/16	12	.62	203A	1	5/8
1 1/16	1 1/16	7/16	12	.62	203	1	1 1/16
3/4	1 1/16	7/16	12	.58	204A	1	3/4
7/8	2	1 1/32	14 1/2	2.0	205	1	7/8
1 5/16	2	1 1/32	14 1/2	2.0	206C	1	1 5/16
1	2	1 1/32	14 1/2	2.0	206B	1	1
1 1/16	2 1/4	5/8	17	1.8	207	1	1 1/16
1 1/8	2 1/4	5/8	17	1.8	207A	1	1 1/8
1 1/4	2 5/8	1 1/16	19	2.7	208	1	1 1/4
1 5/16	2 5/8	1 1/16	19	2.7	208A	1	1 5/16
1 7/16	2 5/8	1 1/16	19	2.6	209	1	1 7/16
1 1/2	2 5/8	1 1/16	19	2.6	209A	1	1 1/2
1 5/8	4	1 5/16	22 11/16	7.0	210	1	1 5/8
1 11/16	4	1 9/16	22 11/16	7.0	210A	1	1 11/16
1 13/16	4	1 5/16	22 11/16	6.9	211	1	1 13/16
1 7/8	4	1 5/16	22 11/16	6.9	211A	1	1 7/8
2	4	1 9/16	22 11/16	6.8	212	1	2



Drop Forged from High Grade Carbon Steel, thru Hardening.

Straight Handle with 15° Angle Opening.

Handles are Tapered for Insertion into Bolt Holes.



12 Point Box Opening

Box Wrenches

Wrench Opening	Diameter of Head		Length	Wt. Ea. Lbs.	Industrial Black	Std. Pkg. Qty.	Wrench Opening
	A	B			Part No.		
1/2	29/32	3/8	6 25/32	.28	801	6	1/2
5/16	1 1/32	7/16	6 25/32	.30	802A	6	5/16
5/8	1 1/16	1/2	7 7/8	.38	803A	6	5/8
1 1/16	1 1/8	1/2	7 3/16	.45	803	6	1 1/16
3/4	1 1/32	9/16	7 1/16	.53	804A	6	3/4
7/8	1 3/8	5/8	7 1/2	.60	805	6	7/8
1 5/16	1 7/16	5/8	7 13/16	.63	806	6	1 5/16
1	1 9/16	1 1/16	7 13/16	.69	806B	6	1
1 1/16	1 5/8	3/4	7 15/16	.78	807	6	1 1/16
1 1/8	1 11/16	25/32	7 15/16	.83	807A	6	1 1/8
1 1/4	1 23/32	13/16	7 15/16	.83	808	6	1 1/4
1 1/2	2 1/16	7/8	10	1.6	809A	6	1 1/2