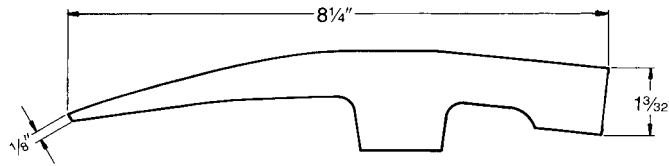



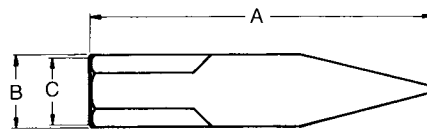
Hammers


Only *Martin* Provides This Added Warranty —
If a Hammer Head Should Loosen at Any Time, Return
It for Handle Replacement or a New Hammer.




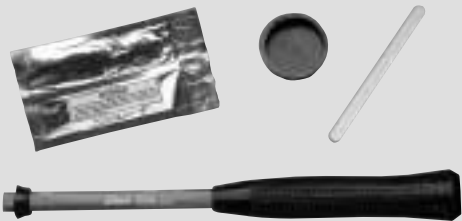
WARNING: Always wear Safety Goggles.

	Brick Hammer						
	Head Weight	Overall Length	Replacement Handle Kit	Weight with Handle Lbs.	Industrial Black Head Finish	Std. Pkg. Qty.	Head Weight
	1 1/2 lbs.	11	HH173FG	2.0	Part No. 173	6	1 1/2 lb.



	Tinner's Riveting Hammer									
	Head Weight	Overall Length	Head Length	Head Width	Face Width	Replacement Handle	Weight with Handle Lbs.	Industrial Black Head Finish	Std. Pkg. Qty.	Head Weight
			A	B	C			Part No.		
4 oz.	9 1/4	3 1/16	7/16	1 5/32	HH50	.38	25G	6	4 oz.	
8 oz.	11	4 1/4	3/4	2 1/32	HH53	.76	26G	6	8 oz.	
12 oz.	13 1/2	4 3/4	29/32	2 5/32	HH801	1.1	27G	6	12 oz.	
1 lb.	14	5 1/8	3 1/32	2 7/32	HH801	1.4	28G	6	1 lb.	

	Hickory Hammer Handles			
	Part Number	Std. Pkg. Qty.	Approx. Length	Use For
	HH42A18	12	18	165 Body Hammer
	HH42B	12	12	All Body Hammers (Except 165 & 155)
	HH45	12	16	Cross Peen and Double Face Eng. and 155
	HH49	12	9 1/4	2 oz. Ball Peen
	HH50	12	10	4 oz. Ball Peen/4 oz. Riveting
	HH53	12	12	8 oz. Ball Peen/8 oz. Riveting
	HH56	12	13 1/2	12 oz. Ball Peen
	HH59	12	14 1/2	1 lb., 1 1/4 lb. Ball Peen
HH66	12	16	1 1/2, 2 lb. Ball Peen	
HH69	12	17	2 1/2 lb. Ball Peen	
HH71	12	17	3 lb. Ball Peen	
HH92	12	10 1/2	All Hand Drilling	
HH801	12	13 3/4	12 & 16 oz. Riveting and Settling	
HH418	12	15	Short Handle Sledge	
HH6810	12	33	6, 8 & 10 lb. Sledge	
HH1216	12	35	12 & 16 lb. Sledge	

	Fiberglass Replacement Handle Kits			
	Part Number	Std. Pkg. Qty.	Approx. Length	Use For
	HH105106FG	1	13	1 lb. and 1 1/4 lb. Ball Peen — G Series
	HH107FG	1	14	1 1/2 lb. Ball Peen — G Series
	HH108FG	1	16	2 lbs. Ball Peen — G Series
	HH109110FG	1	16	2 1/2 lb. and 3 lb. Ball Peen — G Series
	HH173FG	1	12 1/2	1 1/2 lbs. Brick Hammer
HHBFFG	1	12	All Body Hammers with 12" Handle	