

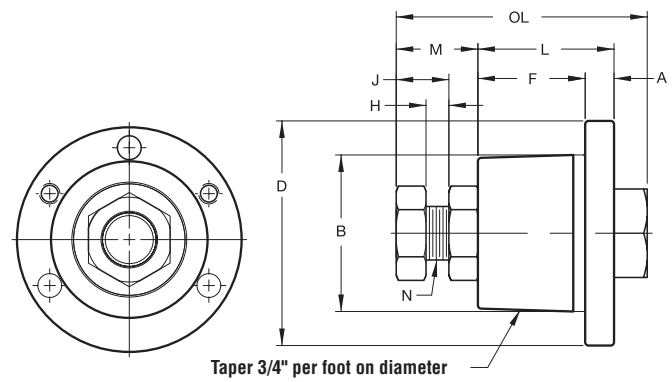
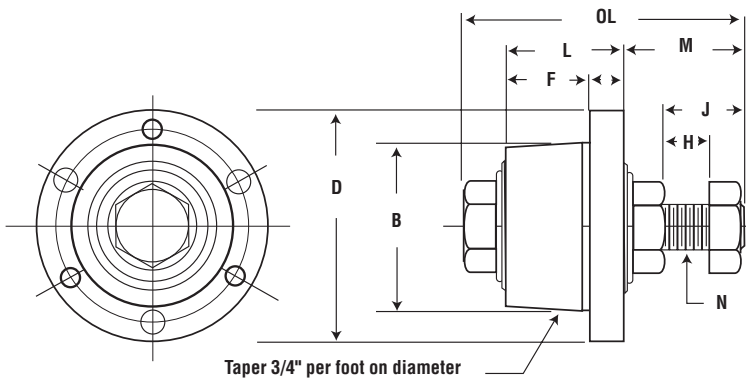
QD and MST® Idler Bushings



Martin idler bushings are designed to accommodate stock v-belt drives, sprockets, timing belt pulleys, or other products that use QD or MST® type bushings.

They are equipped with two electric motor grade, permanently lubricated ball bearings, mounted on a precision shoulder bolt. Shoulder bolt and two hex jam nuts are zinc plated.

Installation is made by slipping the threaded shaft through a hole bored in support structure, and tightening the locking nut. Sheaves, sprockets, or other products can be removed without dismounting the idler bushing. Available in sizes as shown below. Boxed complete with all mounting hardware and instructions.



QD Radial Load Ratings (lbs) 2500 Hours Service Life

Part Number	RPM				
	100	500	1000	1200	1800
SH-BB	1260	740	580	540	480
SD-BB	1740	1020	800	760	660
SK-BB	2370	1360	1070	1000	880
SF-BB	2550	1500	1180	1100	980
E-BB	4640	2720	2140	2020	1780

Service Temperature Range -40° F Minimum +248° F Maximum.

MST® Radial Load Ratings (lbs) 2500 Hours Service Life

Part Number	RPM				
	100	500	1000	1200	1800
H-BB 1/2	1411	825	655	616	538
P1-BB 5/8	1752	1024	813	765	668
Q1-BB 3/4	2344	1371	1088	1024	894
Q1-BB 1	2555	1494	1186	1116	975

Service Temperature Range -40° F Minimum +248° F Maximum.

Part Number	Dimensions									
	A	B	D	F	H	J	L	M	N	OL
SH-BB	0.438	1.871	2.688	0.750	0.625	0.938	1.313	1.313	0.438	3.063
SD-BB	0.500	2.187	3.188	1.250	0.688	0.688	1.813	1.563	0.625	3.875
SK-BB	0.563	2.812	3.875	1.250	0.750	0.813	1.938	1.750	0.750	4.563
SF-BB	0.563	3.125	4.625	1.250	0.750	0.938	2.063	2.125	0.875	5.000
E-BB	0.750	3.834	6.000	1.625	1.438	2.188	2.625	3.188	1.375	6.875
H-BB 1/2	0.250	1.625	2.500	1.000	0.375	1.063	1.250	1.000	0.500	2.563
P1-BB 5/8	0.406	1.937	3.000	1.531	0.531	0.922	1.938	1.313	0.625	3.641
Q1-BB 3/4	0.531	2.875	4.125	1.938	0.313	0.781	2.500	1.250	0.750	4.219
Q1-BB 1	0.531	2.875	4.125	1.938	0.281	0.891	2.500	1.500	1.000	4.609