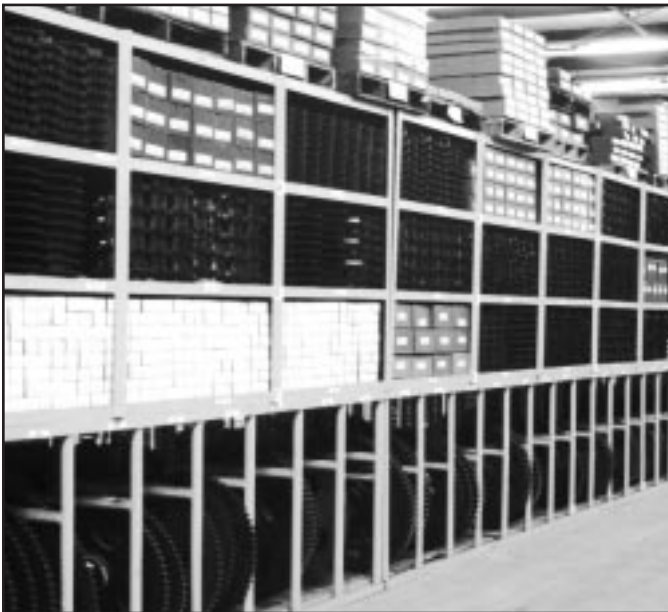


MST Sprockets

Martin



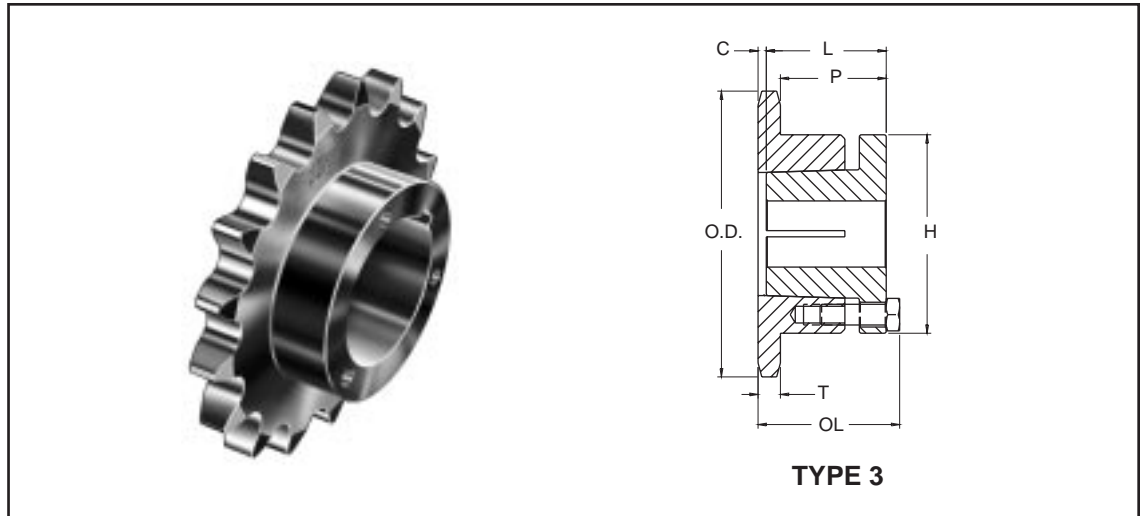
Martin Split Taper (MST)

Martin Quality!

Martin Inventory!

Martin Service!

- **Immediate Delivery.**
Deep and broad inventory...Same day shipment.
- **Local Service & Availability.**
Branches throughout North America. Open early...Stay late...
- **Quick Alterations & MTO's.**
Fast hardening on unhardened sizes. Special tooth and bushing combinations.
- **Reduced Shipping Expense.**
Unsurpassed freight allowance...Product closer to YOU...can ship with other products.
- **Lower Transaction Cost.**
No minimum order or handling charge.
- **Blind Assembly.**
Bushing will only mount one way in sprocket. Bolts all line up when bushing is installed.
- **Key to Key Drive.**
Bushing provides drive keyed to both the shaft and the driven sprocket.
- **Comprehensive Offering.**
Martin Split Taper joins complete QD & Taper Bushed Lines.



Single - MST Sprockets

| No. Teeth | Catalog Number | Bush-ing | Diameters | | Type | Max. Bore | Dimensions | | | | | | Weight (Approx.) | |
|-----------|----------------|----------|--------------|------------|------|-----------|------------|-------|------|-------|--------|--------|------------------|----------|
| | | | Outside Dia. | Pitch Dia. | | | OL | L | C | H | P | T(nom) | With Hub | Rim Only |
| 19 | 35H19 | H | 2.470 | 2.278 | 3 | 1-1/2 | 1-1/2 | 1-1/4 | 1/16 | 2-1/2 | 1-5/32 | .168 | 1.3 | .5 |
| 20 | 35H20 | H | 2.590 | 2.397 | 3 | 1-1/2 | 1-1/2 | 1-1/4 | 1/16 | 2-1/2 | 1-5/32 | .168 | 1.3 | .5 |
| 21 | 35H21 | H | 2.710 | 2.516 | 3 | 1-1/2 | 1-1/2 | 1-1/4 | 1/16 | 2-1/2 | 1-5/32 | .168 | 1.4 | .6 |
| 22 | 35H22 | H | 2.830 | 2.635 | 3 | 1-1/2 | 1-1/2 | 1-1/4 | 1/16 | 2-1/2 | 1-5/32 | .168 | 1.5 | .7 |
| 23 | 35H23 | H | 2.950 | 2.754 | 3 | 1-1/2 | 1-1/2 | 1-1/4 | 1/16 | 2-1/2 | 1-5/32 | .168 | 1.5 | .7 |
| 24 | 35H24 | H | 3.070 | 2.873 | 3 | 1-1/2 | 1-1/2 | 1-1/4 | 1/16 | 2-1/2 | 1-5/32 | .168 | 1.6 | .8 |
| 25 | 35H25 | H | 3.190 | 2.992 | 3 | 1-1/2 | 1-1/2 | 1-1/4 | 1/16 | 2-1/2 | 1-5/32 | .168 | 1.6 | .8 |
| 26 | 35H26 | H | 3.310 | 3.111 | 3 | 1-1/2 | 1-1/2 | 1-1/4 | 1/16 | 2-1/2 | 1-5/32 | .168 | 1.6 | .8 |
| 28 | 35H28 | H | 3.550 | 3.349 | 3 | 1-1/2 | 1-1/2 | 1-1/4 | 1/16 | 2-1/2 | 1-5/32 | .168 | 1.7 | .9 |
| 30 | 35H30 | H | 3.790 | 3.588 | 3 | 1-1/2 | 1-1/2 | 1-1/4 | 1/16 | 2-1/2 | 1-5/32 | .168 | 1.7 | .9 |
| 32 | 35H32 | H | 4.030 | 3.826 | 3 | 1-1/2 | 1-1/2 | 1-1/4 | 1/16 | 2-1/2 | 1-5/32 | .168 | 1.7 | .9 |
| 35 | 35H35 | H | 4.390 | 4.183 | 3 | 1-1/2 | 1-1/2 | 1-1/4 | 1/16 | 2-1/2 | 1-5/32 | .168 | 1.8 | 1.0 |
| 36 | 35H36 | H | 4.510 | 4.303 | 3 | 1-1/2 | 1-1/2 | 1-1/4 | 1/16 | 2-1/2 | 1-5/32 | .168 | 1.8 | 1.0 |
| 40 | 35H40 | H | 4.990 | 4.780 | 3 | 1-1/2 | 1-1/2 | 1-1/4 | 1/16 | 2-1/2 | 1-5/32 | .168 | 2.0 | 1.2 |
| 42 | 35H42 | H | 5.230 | 5.018 | 3 | 1-1/2 | 1-1/2 | 1-1/4 | 1/16 | 2-1/2 | 1-5/32 | .168 | 2.0 | 1.2 |
| 45 | 35H45 | H | 5.590 | 5.376 | 3 | 1-1/2 | 1-1/2 | 1-1/4 | 1/16 | 2-1/2 | 1-5/32 | .168 | 2.2 | 1.4 |
| 48 | 35H48 | H | 5.950 | 5.734 | 3 | 1-1/2 | 1-1/2 | 1-1/4 | 1/16 | 2-1/2 | 1-5/32 | .168 | 2.3 | 1.5 |
| 54 | 35H54 | H | 6.660 | 6.449 | 3 | 1-1/2 | 1-1/2 | 1-1/4 | 1/16 | 2-1/2 | 1-5/32 | .168 | 2.6 | 1.8 |
| 60 | 35H60 | H | 7.380 | 7.165 | 3 | 1-1/2 | 1-1/2 | 1-1/4 | 1/16 | 2-1/2 | 1-5/32 | .168 | 3.1 | 2.3 |
| 70 | 35H70 | H | 8.580 | 8.358 | 3 | 1-1/2 | 1-1/2 | 1-1/4 | 1/16 | 2-1/2 | 1-5/32 | .168 | 3.6 | 2.8 |
| 72 | 35H72 | H | 8.810 | 8.597 | 3 | 1-1/2 | 1-1/2 | 1-1/4 | 1/16 | 2-1/2 | 1-5/32 | .168 | 3.8 | 3.0 |
| 80 | 35H80 | H | 9.770 | 9.552 | 3 | 1-1/2 | 1-1/2 | 1-1/4 | 1/16 | 2-1/2 | 1-5/32 | .168 | 4.6 | 3.8 |
| 84 | 35H84 | H | 10.250 | 10.029 | 3 | 1-1/2 | 1-1/2 | 1-1/4 | 1/16 | 2-1/2 | 1-5/32 | .168 | 4.8 | 4.0 |
| 96 | 35H96 | H | 11.680 | 11.461 | 3 | 1-1/2 | 1-1/2 | 1-1/4 | 1/16 | 2-1/2 | 1-5/32 | .168 | 6.1 | 5.3 |
| 112 | 35H112 | H | 13.590 | 13.371 | 3 | 1-1/2 | 1-1/2 | 1-1/4 | 1/16 | 2-1/2 | 1-5/32 | .168 | 7.6 | 6.8 |

Sprockets with "H" suffix have hardened teeth.

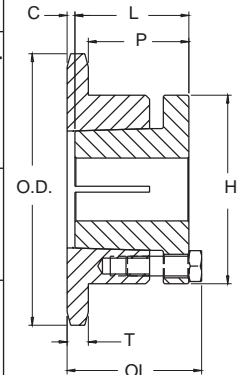
No. 40 1/2" Pitch

MST Sprockets

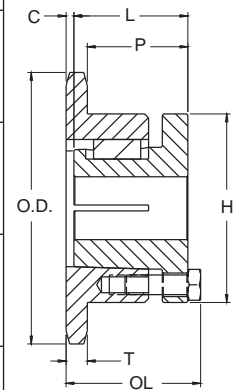


Single - MST Sprockets

| No. Teeth | | Bush-ing | Diameters | | Type | Max. Bore | Dimensions | | | | | | Weight (Approx.) | |
|-----------|--------|----------|--------------|------------|------|-----------|------------|---------|------|-------|---------|--------|------------------|----------|
| | | | Outside Dia. | Pitch Dia. | | | OL | L | C | H | P | T(nom) | With Hub | Rim Only |
| 15 | 40H15H | H | 2.650 | 2.405 | 3 | 1-1/2 | 1-19/32 | 1-1/4 | 5/32 | 2-1/2 | 1-1/8 | .284 | 1.3 | .5 |
| 16 | 40H16H | H | 2.810 | 2.563 | 3 | 1-1/2 | 1-19/32 | 1-1/4 | 5/32 | 2-1/2 | 1-1/8 | .284 | 1.4 | .6 |
| 17 | 40H17H | H | 2.980 | 2.721 | 3 | 1-1/2 | 1-1/2 | 1-1/4 | 1/16 | 2-1/2 | 1-1/32 | .284 | 1.4 | .6 |
| 18 | 40H18H | H | 3.140 | 2.879 | 3 | 1-1/2 | 1-1/2 | 1-1/4 | 1/16 | 2-1/2 | 1-1/32 | .284 | 1.4 | .6 |
| 18 | 40P18H | P1 | 3.140 | 2.879 | 3 | 1-3/4 | 2-3/16 | 1-15/16 | 0 | 3 | 1-21/32 | .284 | 2.7 | 1.4 |
| 19 | 40H19H | H | 3.300 | 3.038 | 3 | 1-1/2 | 1-1/2 | 1-1/4 | 1/16 | 2-1/2 | 1-1/32 | .284 | 1.6 | .8 |
| 19 | 40P19H | P1 | 3.300 | 3.038 | 4 | 1-3/4 | 2-3/16 | 1-15/16 | 0 | 3 | 1-21/32 | .284 | 2.6 | 1.3 |
| 20 | 40H20H | H | 3.460 | 3.196 | 3 | 1-1/2 | 1-1/2 | 1-1/4 | 1/16 | 2-1/2 | 1-1/32 | .284 | 1.7 | .9 |
| 20 | 40P20H | P1 | 3.460 | 3.196 | 4 | 1-3/4 | 2-3/16 | 1-15/16 | 0 | 3 | 1-21/32 | .284 | 2.6 | 1.3 |
| 21 | 40H21H | H | 3.620 | 3.355 | 3 | 1-1/2 | 1-1/2 | 1-1/4 | 1/16 | 2-1/2 | 1-1/32 | .284 | 1.7 | .9 |
| 21 | 40P21H | P1 | 3.620 | 3.355 | 4 | 1-3/4 | 2-3/16 | 1-15/16 | 0 | 3 | 1-21/32 | .284 | 2.8 | 1.5 |
| 22 | 40H22H | H | 3.780 | 3.513 | 3 | 1-1/2 | 1-1/2 | 1-1/4 | 1/16 | 2-1/2 | 1-1/32 | .284 | 1.8 | 1.0 |
| 22 | 40P22H | P1 | 3.780 | 3.513 | 4 | 1-3/4 | 2-3/16 | 1-15/16 | 0 | 3 | 1-21/32 | .284 | 2.9 | 1.6 |
| 23 | 40H23H | H | 3.940 | 3.672 | 3 | 1-1/2 | 1-1/2 | 1-1/4 | 1/16 | 2-1/2 | 1-1/32 | .284 | 1.8 | 1.0 |
| 23 | 40P23H | P1 | 3.940 | 3.672 | 4 | 1-3/4 | 2-3/16 | 1-15/16 | 0 | 3 | 1-21/32 | .284 | 3.0 | 1.7 |
| 24 | 40H24H | H | 4.100 | 3.831 | 3 | 1-1/2 | 1-1/2 | 1-1/4 | 1/16 | 2-1/2 | 1-1/32 | .284 | 1.9 | 1.1 |
| 24 | 40P24H | P1 | 4.100 | 3.831 | 4 | 1-3/4 | 2-3/16 | 1-15/16 | 0 | 3 | 1-21/32 | .284 | 3.1 | 1.8 |
| 25 | 40H25H | H | 4.260 | 3.989 | 3 | 1-1/2 | 1-1/2 | 1-1/4 | 1/16 | 2-1/2 | 1-1/32 | .284 | 2.1 | 1.3 |
| 25 | 40P25H | P1 | 4.260 | 3.989 | 4 | 1-3/4 | 2-3/16 | 1-15/16 | 0 | 3 | 1-21/32 | .284 | 3.2 | 1.9 |
| 26 | 40H26H | H | 4.420 | 4.148 | 3 | 1-1/2 | 1-1/2 | 1-1/4 | 1/16 | 2-1/2 | 1-1/32 | .284 | 2.1 | 1.3 |
| 26 | 40P26H | P1 | 4.420 | 4.148 | 4 | 1-3/4 | 2-3/16 | 1-15/16 | 0 | 3 | 1-21/32 | .284 | 3.2 | 1.9 |
| 27 | 40H27H | H | 4.580 | 4.307 | 3 | 1-1/2 | 1-1/2 | 1-1/4 | 1/16 | 2-1/2 | 1-1/32 | .284 | 2.2 | 1.4 |
| 27 | 40P27H | P1 | 4.58 | 4.307 | 4 | 1-3/4 | 2-3/16 | 1-15/16 | 0 | 3 | 1-21/32 | .284 | 3.3 | 2.0 |
| 28 | 40H28H | H | 4.740 | 4.466 | 3 | 1-1/2 | 1-1/2 | 1-1/4 | 1/16 | 2-1/2 | 1-1/32 | .284 | 2.2 | 1.4 |
| 28 | 40P28H | P1 | 4.740 | 4.466 | 4 | 1-3/4 | 2-3/16 | 1-15/16 | 0 | 3 | 1-21/32 | .284 | 3.4 | 2.1 |
| 29 | 40P29H | P1 | 4.900 | 4.625 | 4 | 1-3/4 | 2-3/16 | 1-15/16 | 0 | 3 | 1-21/32 | .284 | 3.6 | 2.3 |
| 30 | 40H30H | H | 5.060 | 4.783 | 3 | 1-1/2 | 1-1/2 | 1-1/4 | 1/16 | 2-1/2 | 1-1/32 | .284 | 2.4 | 1.6 |
| 30 | 40P30H | P1 | 5.060 | 4.783 | 4 | 1-3/4 | 2-3/16 | 1-15/16 | 0 | 3 | 1-21/32 | .284 | 3.6 | 2.3 |
| 32 | 40H32H | H | 5.380 | 5.101 | 3 | 1-1/2 | 1-1/2 | 1-1/4 | 1/16 | 2-1/2 | 1-1/32 | .284 | 2.6 | 1.8 |
| 33 | 40H33H | H | 5.540 | 5.260 | 3 | 1-1/2 | 1-1/2 | 1-1/4 | 1/16 | 2-1/2 | 1-1/32 | .284 | 2.7 | 1.9 |
| 35 | 40H35H | H | 5.860 | 5.578 | 3 | 1-1/2 | 1-1/2 | 1-1/4 | 1/16 | 2-1/2 | 1-1/32 | .284 | 2.9 | 2.1 |
| 36 | 40H36H | H | 6.020 | 5.737 | 3 | 1-1/2 | 1-1/2 | 1-1/4 | 1/16 | 2-1/2 | 1-1/32 | .284 | 3.1 | 2.3 |
| 38 | 40H38H | H | 6.330 | 6.055 | 3 | 1-1/2 | 1-1/2 | 1-1/4 | 1/16 | 2-1/2 | 1-1/32 | .284 | 3.4 | 2.6 |
| 40 | 40H40H | H | 6.650 | 6.373 | 3 | 1-1/2 | 1-1/2 | 1-1/4 | 1/16 | 2-1/2 | 1-1/32 | .284 | 3.6 | 2.8 |
| 31 | 40P31 | P1 | 5.220 | 4.942 | 4 | 1-3/4 | 2-3/16 | 1-15/16 | 0 | 3 | 1-21/32 | .284 | 3.8 | 2.5 |
| 32 | 40P32 | P1 | 5.380 | 5.101 | 4 | 1-3/4 | 2-3/16 | 1-15/16 | 0 | 3 | 1-21/32 | .284 | 3.9 | 2.6 |
| 33 | 40P33 | P1 | 5.540 | 5.260 | 4 | 1-3/4 | 2-3/16 | 1-15/16 | 0 | 3 | 1-21/32 | .284 | 3.9 | 2.6 |
| 34 | 40P34 | P1 | 5.700 | 5.419 | 4 | 1-3/4 | 2-3/16 | 1-15/16 | 0 | 3 | 1-21/32 | .284 | 4.1 | 2.8 |
| 35 | 40P35 | P1 | 5.860 | 5.578 | 4 | 1-3/4 | 2-3/16 | 1-15/16 | 0 | 3 | 1-21/32 | .284 | 4.2 | 2.9 |
| 36 | 40P36 | P1 | 6.020 | 5.737 | 4 | 1-3/4 | 2-3/16 | 1-15/16 | 0 | 3 | 1-21/32 | .284 | 4.4 | 3.1 |
| 37 | 40P37 | P1 | 6.180 | 5.896 | 4 | 1-3/4 | 2-3/16 | 1-15/16 | 0 | 3 | 1-21/32 | .284 | 4.6 | 3.3 |
| 38 | 40P38 | P1 | 6.330 | 6.055 | 4 | 1-3/4 | 2-3/16 | 1-15/16 | 0 | 3 | 1-21/32 | .284 | 4.6 | 3.3 |
| 40 | 40P40 | P1 | 6.650 | 6.373 | 4 | 1-3/4 | 2-3/16 | 1-15/16 | 0 | 3 | 1-21/32 | .284 | 4.8 | 3.5 |
| 41 | 40P41 | P1 | 6.810 | 6.532 | 4 | 1-3/4 | 2-3/16 | 1-15/16 | 0 | 3 | 1-21/32 | .284 | 4.9 | 3.6 |
| 42 | 40P42 | P1 | 6.970 | 6.691 | 4 | 1-3/4 | 2-3/16 | 1-15/16 | 0 | 3 | 1-21/32 | .284 | 5.2 | 3.9 |
| 44 | 40P44 | P1 | 7.290 | 7.009 | 4 | 1-3/4 | 2-3/16 | 1-15/16 | 0 | 3 | 1-21/32 | .284 | 5.3 | 4.0 |
| 45 | 40P45 | P1 | 7.450 | 7.168 | 4 | 1-3/4 | 2-3/16 | 1-15/16 | 0 | 3 | 1-21/32 | .284 | 5.5 | 4.2 |
| 47 | 40P47 | P1 | 7.770 | 7.486 | 4 | 1-3/4 | 2-3/16 | 1-15/16 | 0 | 3 | 1-21/32 | .284 | 5.9 | 4.6 |
| 48 | 40P48 | P1 | 7.930 | 7.645 | 4 | 1-3/4 | 2-3/16 | 1-15/16 | 0 | 3 | 1-21/32 | .284 | 6.1 | 4.8 |
| 50 | 40P50 | P1 | 8.250 | 7.963 | 4 | 1-3/4 | 2-3/16 | 1-15/16 | 0 | 3 | 1-21/32 | .284 | 6.3 | 5.0 |
| 54 | 40P54 | P1 | 8.890 | 8.599 | 4 | 1-3/4 | 2-3/16 | 1-15/16 | 0 | 3 | 1-21/32 | .284 | 6.8 | 5.5 |
| 56 | 40P56 | P1 | 9.200 | 8.917 | 4 | 1-3/4 | 2-3/16 | 1-15/16 | 0 | 3 | 1-21/32 | .284 | 7.2 | 5.9 |
| 60 | 40P60 | P1 | 9.840 | 9.554 | 4 | 1-3/4 | 2-3/16 | 1-15/16 | 0 | 3 | 1-21/32 | .284 | 7.9 | 6.6 |
| 60 | 40Q60 | Q1 | 9.840 | 9.554 | 4 | 2-11/16 | 2-25/32 | 2-1/2 | 0 | 4-1/8 | 2-7/32 | .284 | 12.3 | 8.8 |
| 70 | 40P70 | P1 | 11.430 | 11.145 | 4 | 1-3/4 | 2-3/16 | 1-15/16 | 0 | 3 | 1-21/32 | .284 | 9.9 | 8.6 |
| 70 | 40Q70 | Q1 | 11.430 | 11.145 | 4 | 2-11/16 | 2-25/32 | 2-1/2 | 0 | 4-1/8 | 2-7/32 | .284 | 14.5 | 11.0 |
| 72 | 40Q72 | Q1 | 11.750 | 11.463 | 4 | 2-11/16 | 2-25/32 | 2-1/2 | 0 | 4-1/8 | 2-7/32 | .284 | 14.7 | 11.2 |
| 80 | 40Q80 | Q1 | 13.030 | 12.736 | 4 | 2-11/16 | 2-25/32 | 2-1/2 | 0 | 4-1/8 | 2-7/32 | .284 | 16.6 | 13.1 |
| 84 | 40Q84 | Q1 | 13.660 | 13.372 | 4 | 2-11/16 | 2-25/32 | 2-1/2 | 0 | 4-1/8 | 2-7/32 | .284 | 17.6 | 14.1 |
| 96 | 40Q96 | Q1 | 15.570 | 15.281 | 4 | 2-11/16 | 2-25/32 | 2-1/2 | 0 | 4-1/8 | 2-7/32 | .284 | 16.3 | 12.8 |
| 112 | 40Q112 | Q1 | 18.120 | 17.828 | 4 | 2-11/16 | 2-25/32 | 2-1/2 | 0 | 4-1/8 | 2-7/32 | .284 | 20.8 | 17.3 |



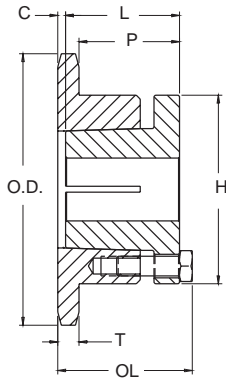
TYPE 3



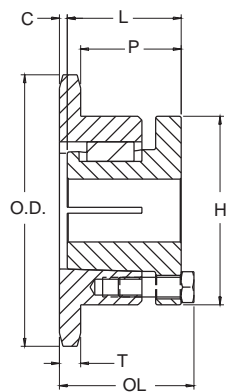
TYPE 4

Sprockets with "H" suffix have hardened teeth.

Single - MST Sprockets



TYPE 3



TYPE 4

| No. Teeth | Catalog Number | Bush-ing | Diameters | | Type | Max. Bore | Dimensions | | | | | | Weight (Approx.) | |
|-----------|----------------|----------|--------------|------------|------|-----------|------------|---------|------|-------|---------|--------|------------------|----------|
| | | | Outside Dia. | Pitch Dia. | | | OL | L | C | H | P | T(nom) | With Hub | Rim Only |
| 13 | 50H13H | H | 2.910 | 2.612 | 3 | 1-1/2 | 1-21/32 | 1-1/4 | 7/32 | 2-1/2 | 1-1/8 | .343 | 1.4 | .6 |
| 14 | 50H14H | H | 3.110 | 2.809 | 3 | 1-1/2 | 1-19/32 | 1-1/4 | 5/32 | 2-1/2 | 1-1/16 | .343 | 1.4 | .6 |
| 15 | 50H15H | H | 3.320 | 3.006 | 3 | 1-1/2 | 1-1/2 | 1-1/4 | 1/16 | 2-1/2 | 31/32 | .343 | 1.6 | .8 |
| 15 | 50P15H | P1 | 3.320 | 3.006 | 4 | 1-3/4 | 2-3/16 | 1-15/16 | 0 | 3 | 1-19/32 | .343 | 2.4 | 1.1 |
| 16 | 50H16H | H | 3.520 | 3.204 | 3 | 1-1/2 | 1-1/2 | 1-1/4 | 1/16 | 2-1/2 | 31/32 | .343 | 1.7 | .9 |
| 16 | 50P16H | P1 | 3.520 | 3.204 | 4 | 1-3/4 | 2-3/16 | 1-15/16 | 0 | 3 | 1-19/32 | .343 | 2.7 | 1.4 |
| 17 | 50H17H | H | 3.720 | 3.401 | 3 | 1-1/2 | 1-1/2 | 1-1/4 | 1/16 | 2-1/2 | 31/32 | .343 | 1.8 | 1.0 |
| 17 | 50P17H | P1 | 3.720 | 3.401 | 4 | 1-3/4 | 2-3/16 | 1-15/16 | 0 | 3 | 1-19/32 | .343 | 2.7 | 1.4 |
| 18 | 50H18H | H | 3.920 | 3.599 | 3 | 1-1/2 | 1-1/2 | 1-1/4 | 1/16 | 2-1/2 | 31/32 | .343 | 1.9 | 1.1 |
| 18 | 50P18H | P1 | 3.920 | 3.599 | 4 | 1-3/4 | 2-3/16 | 1-15/16 | 0 | 3 | 1-19/32 | .343 | 3.1 | 1.8 |
| 19 | 50H19H | H | 4.120 | 3.797 | 3 | 1-1/2 | 1-1/2 | 1-1/4 | 1/16 | 2-1/2 | 31/32 | .343 | 2.1 | 1.3 |
| 19 | 50P19H | P1 | 4.120 | 3.797 | 4 | 1-3/4 | 2-3/16 | 1-15/16 | 0 | 3 | 1-19/32 | .343 | 3.1 | 1.8 |
| 20 | 50H20H | H | 4.320 | 3.995 | 3 | 1-1/2 | 1-1/2 | 1-1/4 | 1/16 | 2-1/2 | 31/32 | .343 | 2.3 | 1.5 |
| 20 | 50P20H | P1 | 4.320 | 3.995 | 4 | 1-3/4 | 2-3/16 | 1-15/16 | 0 | 3 | 1-19/32 | .343 | 3.3 | 2.0 |
| 21 | 50H21H | H | 4.520 | 4.194 | 3 | 1-1/2 | 1-1/2 | 1-1/4 | 1/16 | 2-1/2 | 31/32 | .343 | 2.2 | 1.4 |
| 21 | 50P21H | P1 | 4.520 | 4.194 | 4 | 1-3/4 | 2-3/16 | 1-15/16 | 0 | 3 | 1-19/32 | .343 | 3.4 | 2.1 |
| 22 | 50H22H | H | 4.720 | 4.392 | 3 | 1-1/2 | 1-1/2 | 1-1/4 | 1/16 | 2-1/2 | 31/32 | .343 | 2.3 | 1.5 |
| 22 | 50P22H | P1 | 4.720 | 4.392 | 4 | 1-3/4 | 2-3/16 | 1-15/16 | 0 | 3 | 1-19/32 | .343 | 3.5 | 2.2 |
| 23 | 50H23H | H | 4.920 | 4.590 | 3 | 1-1/2 | 1-1/2 | 1-1/4 | 1/16 | 2-1/2 | 31/32 | .343 | 2.5 | 1.7 |
| 23 | 50P23H | P1 | 4.920 | 4.590 | 4 | 1-3/4 | 2-3/16 | 1-15/16 | 0 | 3 | 1-19/32 | .343 | 3.7 | 2.4 |
| 23 | 50Q23H | Q1 | 4.920 | 4.590 | 4 | 2-11/16 | 2-25/32 | 2-1/2 | 0 | 4-1/8 | 2-5/32 | .343 | 6.7 | 3.2 |
| 24 | 50H24H | H | 5.120 | 4.788 | 3 | 1-1/2 | 1-1/2 | 1-1/4 | 1/16 | 2-1/2 | 31/32 | .343 | 2.6 | 1.8 |
| 24 | 50P24H | P1 | 5.120 | 4.788 | 4 | 1-3/4 | 2-3/16 | 1-15/16 | 0 | 3 | 1-19/32 | .343 | 3.9 | 2.6 |
| 24 | 50Q24H | Q1 | 5.120 | 4.788 | 4 | 2-11/16 | 2-25/32 | 2-1/2 | 0 | 4-1/8 | 2-5/32 | .343 | 7.0 | 3.5 |
| 25 | 50H25H | H | 5.320 | 4.987 | 3 | 1-1/2 | 1-1/2 | 1-1/4 | 1/16 | 2-1/2 | 31/32 | .343 | 2.7 | 1.9 |
| 25 | 50P25H | P1 | 5.320 | 4.987 | 4 | 1-3/4 | 2-3/16 | 1-15/16 | 0 | 3 | 1-19/32 | .343 | 4.0 | 2.7 |
| 25 | 50Q25H | Q1 | 5.320 | 4.987 | 4 | 2-11/16 | 2-25/32 | 2-1/2 | 0 | 4-1/8 | 2-5/32 | .343 | 7.1 | 3.6 |
| 26 | 50H26H | H | 5.520 | 5.185 | 3 | 1-1/2 | 1-1/2 | 1-1/4 | 1/16 | 2-1/2 | 31/32 | .343 | 2.8 | 2.0 |
| 26 | 50P26H | P1 | 5.520 | 5.185 | 4 | 1-3/4 | 2-3/16 | 1-15/16 | 0 | 3 | 1-19/32 | .343 | 4.1 | 2.8 |
| 26 | 50Q26H | Q1 | 5.520 | 5.185 | 4 | 2-11/16 | 2-25/32 | 2-1/2 | 0 | 4-1/8 | 2-5/32 | .343 | 7.2 | 3.7 |
| 27 | 50H27H | H | 5.720 | 5.384 | 3 | 1-1/2 | 1-1/2 | 1-1/4 | 1/16 | 2-1/2 | 31/32 | .343 | 3.0 | 2.2 |
| 27 | 50P27H | P1 | 5.720 | 5.384 | 4 | 1-3/4 | 2-3/16 | 1-15/16 | 0 | 3 | 1-19/32 | .343 | 4.2 | 2.9 |
| 27 | 50Q27H | Q1 | 5.720 | 5.384 | 4 | 2-11/16 | 2-25/32 | 2-1/2 | 0 | 4-1/8 | 2-5/32 | .343 | 7.3 | 3.8 |
| 28 | 50H28H | H | 5.920 | 5.582 | 3 | 1-1/2 | 1-1/2 | 1-1/4 | 1/16 | 2-1/2 | 31/32 | .343 | 3.3 | 2.5 |
| 28 | 50P28H | P1 | 5.920 | 5.582 | 4 | 1-3/4 | 2-3/16 | 1-15/16 | 0 | 3 | 1-19/32 | .343 | 4.3 | 3.0 |
| 28 | 50Q28H | Q1 | 5.920 | 5.582 | 4 | 2-11/16 | 2-25/32 | 2-1/2 | 0 | 4-1/8 | 2-5/32 | .343 | 7.5 | 4.0 |
| 29 | 50P29H | P1 | 6.120 | 5.781 | 4 | 1-3/4 | 2-3/16 | 1-15/16 | 0 | 3 | 1-19/32 | .343 | 4.7 | 3.4 |
| 30 | 50H30H | H | 6.320 | 5.979 | 3 | 1-1/2 | 1-1/2 | 1-1/4 | 1/16 | 2-1/2 | 31/32 | .343 | 3.7 | 2.9 |
| 30 | 50P30H | P1 | 6.320 | 5.979 | 4 | 1-3/4 | 2-3/16 | 1-15/16 | 0 | 3 | 1-19/32 | .343 | 4.9 | 3.6 |
| 30 | 50Q30H | Q1 | 6.320 | 5.979 | 4 | 2-11/16 | 2-25/32 | 2-1/2 | 0 | 4-1/8 | 2-5/32 | .343 | 9.1 | 5.6 |
| 32 | 50H32H | H | 6.720 | 6.376 | 3 | 1-1/2 | 1-1/2 | 1-1/4 | 1/16 | 2-1/2 | 31/32 | .343 | 4.0 | 3.2 |
| 33 | 50H33H | H | 6.920 | 6.575 | 3 | 1-1/2 | 1-1/2 | 1-1/4 | 1/16 | 2-1/2 | 31/32 | .343 | 4.2 | 3.4 |
| 34 | 50H34H | H | 7.120 | 6.774 | 3 | 1-1/2 | 1-1/2 | 1-1/4 | 1/16 | 2-1/2 | 31/32 | .343 | 4.5 | 3.7 |
| 35 | 50H35H | H | 7.320 | 6.972 | 3 | 1-1/2 | 1-1/2 | 1-1/4 | 1/16 | 2-1/2 | 31/32 | .343 | 4.6 | 3.8 |
| 36 | 50H36H | H | 7.520 | 7.171 | 3 | 1-1/2 | 1-1/2 | 1-1/4 | 1/16 | 2-1/2 | 31/32 | .343 | 4.8 | 4.0 |
| 38 | 50H38H | H | 7.920 | 7.569 | 3 | 1-1/2 | 1-1/2 | 1-1/4 | 1/16 | 2-1/2 | 31/32 | .343 | 5.2 | 4.4 |
| 40 | 50H40H | H | 8.320 | 7.966 | 3 | 1-1/2 | 1-1/2 | 1-1/4 | 1/16 | 2-1/2 | 31/32 | .343 | 5.6 | 4.8 |
| 31 | 50P31 | P1 | 6.520 | 6.178 | 4 | 1-3/4 | 2-3/16 | 1-15/16 | 0 | 3 | 1-19/32 | .343 | 4.9 | 3.6 |
| 32 | 50P32 | P1 | 6.720 | 6.376 | 4 | 1-3/4 | 2-3/16 | 1-15/16 | 0 | 3 | 1-19/32 | .343 | 5.2 | 3.9 |
| 32 | 50Q32 | Q1 | 6.720 | 6.376 | 4 | 2-11/16 | 2-25/32 | 2-1/2 | 0 | 4-1/8 | 2-5/32 | .343 | 9.6 | 6.1 |
| 33 | 50P33 | P1 | 6.920 | 6.575 | 4 | 1-3/4 | 2-3/16 | 1-15/16 | 0 | 3 | 1-19/32 | .343 | 5.4 | 4.1 |
| 34 | 50P34 | P1 | 7.120 | 6.774 | 4 | 1-3/4 | 2-3/16 | 1-15/16 | 0 | 3 | 1-19/32 | .343 | 5.6 | 4.3 |
| 35 | 50P35 | P1 | 7.320 | 6.972 | 4 | 1-3/4 | 2-3/16 | 1-15/16 | 0 | 3 | 1-19/32 | .343 | 5.6 | 4.3 |
| 35 | 50Q35 | Q1 | 7.320 | 6.972 | 4 | 2-11/16 | 2-25/32 | 2-1/2 | 0 | 4-1/8 | 2-5/32 | .343 | 10.3 | 6.8 |
| 36 | 50P36 | P1 | 7.520 | 7.171 | 4 | 1-3/4 | 2-3/16 | 1-15/16 | 0 | 3 | 1-19/32 | .343 | 6.1 | 4.8 |
| 36 | 50Q36 | Q1 | 7.520 | 7.171 | 4 | 2-11/16 | 2-25/32 | 2-1/2 | 0 | 4-1/8 | 2-5/32 | .343 | 10.3 | 6.8 |
| 37 | 50Q37 | Q1 | 7.720 | 7.370 | 4 | 2-11/16 | 2-25/32 | 2-1/2 | 0 | 4-1/8 | 2-5/32 | .343 | 10.5 | 7.0 |
| 38 | 50Q38 | Q1 | 7.920 | 7.569 | 4 | 2-11/16 | 2-25/32 | 2-1/2 | 0 | 4-1/8 | 2-5/32 | .343 | 10.9 | 7.4 |
| 39 | 50Q39 | Q1 | 8.120 | 7.767 | 4 | 2-11/16 | 2-25/32 | 2-1/2 | 0 | 4-1/8 | 2-5/32 | .343 | 11.1 | 7.6 |
| 40 | 50Q40 | Q1 | 8.320 | 7.966 | 4 | 2-11/16 | 2-25/32 | 2-1/2 | 0 | 4-1/8 | 2-5/32 | .343 | 11.5 | 8.0 |
| 41 | 50Q41 | Q1 | 8.520 | 8.165 | 4 | 2-11/16 | 2-25/32 | 2-1/2 | 0 | 4-1/8 | 2-5/32 | .343 | 11.7 | 8.2 |
| 42 | 50Q42 | Q1 | 8.720 | 8.363 | 4 | 2-11/16 | 2-25/32 | 2-1/2 | 0 | 4-1/8 | 2-5/32 | .343 | 11.8 | 8.3 |
| 44 | 50Q44 | Q1 | 9.110 | 8.761 | 4 | 2-11/16 | 2-25/32 | 2-1/2 | 0 | 4-1/8 | 2-5/32 | .343 | 12.1 | 8.6 |
| 45 | 50Q45 | Q1 | 9.310 | 8.960 | 4 | 2-11/16 | 2-25/32 | 2-1/2 | 0 | 4-1/8 | 2-5/32 | .343 | 12.5 | 9.0 |
| 47 | 50Q47 | Q1 | 9.710 | 9.357 | 4 | 2-11/16 | 2-25/32 | 2-1/2 | 0 | 4-1/8 | 2-5/32 | .343 | 12.8 | 9.3 |
| 48 | 50Q48 | Q1 | 9.910 | 9.556 | 4 | 2-11/16 | 2-25/32 | 2-1/2 | 0 | 4-1/8 | 2-5/32 | .343 | 13.1 | 9.6 |
| 50 | 50Q50 | Q1 | 10.310 | 9.954 | 4 | 2-11/16 | 2-25/32 | 2-1/2 | 0 | 4-1/8 | 2-5/32 | .343 | 13.3 | 9.8 |
| 54 | 50Q54 | Q1 | 11.110 | 10.749 | 4 | 2-11/16 | 2-25/32 | 2-1/2 | 0 | 4-1/8 | 2-5/32 | .343 | 14.8 | 11.3 |
| 56 | 50Q56 | Q1 | 11.500 | 11.147 | 4 | 2-11/16 | 2-25/32 | 2-1/2 | 0 | 4-1/8 | 2-5/32 | .343 | 15.8 | 12.3 |
| 60 | 50Q60 | Q1 | 12.300 | 11.942 | 4 | 2-11/16 | 2-25/32 | 2-1/2 | 0 | 4-1/8 | 2-5/32 | .343 | 16.8 | 13.3 |
| 70 | 50Q70 | Q1 | 14.290 | 13.931 | 4 | 2-11/16 | 2-25/32 | 2-1/2 | 0 | 4-1/8 | 2-5/32 | .343 | 20.4 | 16.9 |
| 72 | 50Q72 | Q1 | 14.690 | 14.329 | 4 | 2-11/16 | 2-25/32 | 2-1/2 | 0 | 4-1/8 | 2-5/32 | .343 | 21.6 | 18.1 |
| 80 | 50Q80 | Q1 | 16.280 | 15.920 | 4 | 2-11/16 | 2-25/32 | 2-1/2 | 0 | 4-1/8 | 2-5/32 | .343 | 24.6 | 21.1 |
| 84 | 50Q84 | Q1 | 17.080 | 16.715 | 4 | 2-11/16 | 2-25/32 | 2-1/2 | 0 | 4-1/8 | 2-5/32 | .343 | 27.8 | 24.3 |
| 96 | 50Q96 | Q1 | 19.470 | 19.102 | 4 | 2-11/16 | 2-25/32 | 2-1/2 | 0 | 4-1/8 | 2-5/32 | .343 | 33.3 | 29.8 |
| 112 | 50Q112 | Q1 | 22.650 | 22.285 | 4 | 2-11/16 | 2-25/32 | 2-1/2 | 0 | 4-1/8 | 2-5/32 | .343 | 42.8 | 39.3 |

Sprockets with "H" suffix have hardened teeth.

No. 60

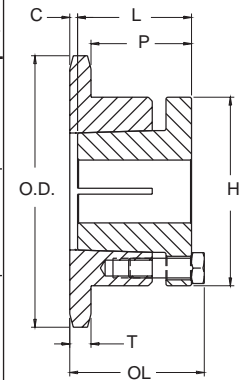
3/4" Pitch

MST Sprockets

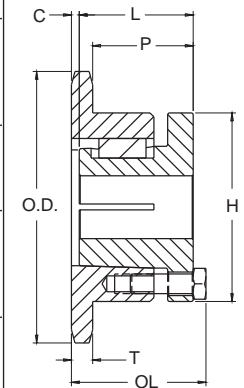
Martin

Single - MST Sprockets

| No. Teeth | Catalog Number | Bush-ing | Diameters | | Type | Max. Bore | Dimensions | | | | | | Weight (Approx.) | |
|-----------|----------------|----------|--------------|------------|------|-----------|------------|---------|------|-------|---------|--------|------------------|----------|
| | | | Outside Dia. | Pitch Dia. | | | OL | L | C | H | P | T(nom) | With Hub | Rim Only |
| 11 | 60H11H | H | 3.000 | 2.662 | 3 | 1-1/2 | 1-13/16 | 1-1/4 | 3/8 | 2-1/2 | 1-5/32 | .459 | 1.5 | .7 |
| 12 | 60H12H | H | 3.250 | 2.898 | 3 | 1-1/2 | 1-3/4 | 1-1/4 | 5/16 | 2-1/2 | 1-3/32 | .459 | 1.6 | .8 |
| 13 | 60H13H | H | 3.490 | 3.134 | 3 | 1-1/2 | 1-1/2 | 1-1/4 | 1/16 | 2-1/2 | 27/32 | .459 | 1.6 | .8 |
| 13 | 60P13H | P1 | 3.490 | 3.134 | 4 | 1-3/4 | 2-3/16 | 1-15/16 | 0 | 3 | 1-15/32 | .459 | 2.5 | 1.2 |
| 14 | 60H14H | H | 3.740 | 3.371 | 3 | 1-1/2 | 1-1/2 | 1-1/4 | 1/16 | 2-1/2 | 27/32 | .459 | 1.9 | 1.1 |
| 14 | 60P14H | P1 | 3.740 | 3.371 | 4 | 1-3/4 | 2-3/16 | 1-15/16 | 0 | 3 | 1-15/32 | .459 | 2.7 | 1.4 |
| 15 | 60H15H | H | 3.980 | 3.607 | 3 | 1-1/2 | 1-1/2 | 1-1/4 | 1/16 | 2-1/2 | 27/32 | .459 | 2.2 | 1.4 |
| 15 | 60P15H | P1 | 3.980 | 3.607 | 4 | 1-3/4 | 2-3/16 | 1-15/16 | 0 | 3 | 1-15/32 | .459 | 3.0 | 1.7 |
| 16 | 60H16H | H | 4.220 | 3.844 | 3 | 1-1/2 | 1-1/2 | 1-1/4 | 1/16 | 2-1/2 | 27/32 | .459 | 2.1 | 1.3 |
| 16 | 60P16H | P1 | 4.220 | 3.844 | 4 | 1-3/4 | 2-3/16 | 1-15/16 | 0 | 3 | 1-15/32 | .459 | 3.1 | 1.8 |
| 17 | 60H17H | H | 4.460 | 4.082 | 3 | 1-1/2 | 1-1/2 | 1-1/4 | 1/16 | 2-1/2 | 27/32 | .459 | 2.3 | 1.5 |
| 17 | 60P17H | P1 | 4.460 | 4.082 | 4 | 1-3/4 | 2-3/16 | 1-15/16 | 0 | 3 | 1-15/32 | .459 | 3.4 | 2.1 |
| 18 | 60H18H | H | 4.700 | 4.319 | 3 | 1-1/2 | 1-1/2 | 1-1/4 | 1/16 | 2-1/2 | 27/32 | .459 | 2.5 | 1.7 |
| 18 | 60P18H | P1 | 4.700 | 4.319 | 4 | 1-3/4 | 2-3/16 | 1-15/16 | 0 | 3 | 1-15/32 | .459 | 3.5 | 2.2 |
| 19 | 60H19H | H | 4.950 | 4.557 | 3 | 1-1/2 | 1-1/2 | 1-1/4 | 1/16 | 2-1/2 | 27/32 | .459 | 2.7 | 1.9 |
| 19 | 60P19H | P1 | 4.950 | 4.557 | 4 | 1-3/4 | 2-3/16 | 1-15/16 | 0 | 3 | 1-15/32 | .459 | 3.8 | 2.5 |
| 20 | 60H20H | H | 5.190 | 4.794 | 3 | 1-1/2 | 1-1/2 | 1-1/4 | 1/16 | 2-1/2 | 27/32 | .459 | 2.9 | 2.1 |
| 20 | 60P20H | P1 | 5.190 | 4.794 | 4 | 1-3/4 | 2-3/16 | 1-15/16 | 0 | 3 | 1-15/32 | .459 | 4.4 | 3.1 |
| 20 | 60Q20H | Q1 | 5.190 | 4.794 | 4 | 2-11/16 | 2-25/32 | 2-1/2 | 0 | 4-1/8 | 2-1/32 | .459 | 7.0 | 3.5 |
| 21 | 60P21H | P1 | 5.430 | 5.032 | 4 | 1-3/4 | 2-3/16 | 1-15/16 | 0 | 3 | 1-15/32 | .459 | 4.2 | 2.9 |
| 21 | 60Q21H | Q1 | 5.430 | 5.032 | 4 | 2-11/16 | 2-25/32 | 2-1/2 | 0 | 4-1/8 | 2-1/32 | .459 | 7.1 | 3.6 |
| 22 | 60H22H | H | 5.670 | 5.270 | 3 | 1-1/2 | 1-1/2 | 1-1/4 | 1/16 | 2-1/2 | 27/32 | .459 | 3.4 | 2.6 |
| 22 | 60P22H | P1 | 5.670 | 5.270 | 4 | 1-3/4 | 2-3/16 | 1-15/16 | 0 | 3 | 1-15/32 | .459 | 4.5 | 3.2 |
| 22 | 60Q22H | Q1 | 5.670 | 5.270 | 4 | 2-11/16 | 2-25/32 | 2-1/2 | 0 | 4-1/8 | 2-1/32 | .459 | 7.5 | 4.0 |
| 23 | 60P23H | P1 | 5.910 | 5.508 | 4 | 1-3/4 | 2-3/16 | 1-15/16 | 0 | 3 | 1-15/32 | .459 | 4.8 | 3.5 |
| 23 | 60Q23H | Q1 | 5.910 | 5.508 | 4 | 2-11/16 | 2-25/32 | 2-1/2 | 0 | 4-1/8 | 2-1/32 | .459 | 7.6 | 4.1 |
| 24 | 60H24H | H | 6.150 | 5.746 | 3 | 1-1/2 | 1-1/2 | 1-1/4 | 1/16 | 2-1/2 | 27/32 | .459 | 3.8 | 3.0 |
| 24 | 60P24H | P1 | 6.150 | 5.746 | 4 | 1-3/4 | 2-3/16 | 1-15/16 | 0 | 3 | 1-15/32 | .459 | 5.1 | 3.8 |
| 24 | 60Q24H | Q1 | 6.150 | 5.746 | 4 | 2-11/16 | 2-25/32 | 2-1/2 | 0 | 4-1/8 | 2-1/32 | .459 | 8.0 | 4.5 |
| 25 | 60P25H | P1 | 6.390 | 5.984 | 4 | 1-3/4 | 2-3/16 | 1-15/16 | 0 | 3 | 1-15/32 | .459 | 5.4 | 4.1 |
| 25 | 60Q25H | Q1 | 6.390 | 5.984 | 4 | 2-11/16 | 2-25/32 | 2-1/2 | 0 | 4-1/8 | 2-1/32 | .459 | 9.4 | 5.9 |
| 26 | 60P26H | P1 | 6.630 | 6.222 | 4 | 1-3/4 | 2-3/16 | 1-15/16 | 0 | 3 | 1-15/32 | .459 | 5.6 | 4.3 |
| 26 | 60Q26H | Q1 | 6.630 | 6.222 | 4 | 2-11/16 | 2-25/32 | 2-1/2 | 0 | 4-1/8 | 2-1/32 | .459 | 9.8 | 6.3 |
| 27 | 60P27H | P1 | 6.870 | 6.460 | 4 | 1-3/4 | 2-3/16 | 1-15/16 | 0 | 3 | 1-15/32 | .459 | 5.8 | 4.5 |
| 27 | 60Q27H | Q1 | 6.870 | 6.460 | 4 | 2-11/16 | 2-25/32 | 2-1/2 | 0 | 4-1/8 | 2-1/32 | .459 | 9.9 | 6.4 |
| 28 | 60P28H | P1 | 7.110 | 6.699 | 4 | 1-3/4 | 2-3/16 | 1-15/16 | 0 | 3 | 1-15/32 | .459 | 6.2 | 4.9 |
| 28 | 60Q28H | Q1 | 7.110 | 6.699 | 4 | 2-11/16 | 2-25/32 | 2-1/2 | 0 | 4-1/8 | 2-1/32 | .459 | 10.4 | 6.9 |
| 29 | 60Q29H | Q1 | 7.350 | 6.937 | 4 | 2-11/16 | 2-25/32 | 2-1/2 | 0 | 4-1/8 | 2-1/32 | .459 | 10.8 | 7.3 |
| 30 | 60P30H | P1 | 7.590 | 7.175 | 4 | 1-3/4 | 2-3/16 | 1-15/16 | 0 | 3 | 1-15/32 | .459 | 6.9 | 5.6 |
| 30 | 60Q30H | Q1 | 7.590 | 7.175 | 4 | 2-11/16 | 2-25/32 | 2-1/2 | 0 | 4-1/8 | 2-1/32 | .459 | 11.1 | 7.6 |
| 31 | 60Q31 | Q1 | 7.830 | 7.413 | 4 | 2-11/16 | 2-25/32 | 2-1/2 | 0 | 4-1/8 | 2-1/32 | .459 | 11.3 | 7.8 |
| 32 | 60Q32 | Q1 | 8.070 | 7.652 | 4 | 2-11/16 | 2-25/32 | 2-1/2 | 0 | 4-1/8 | 2-1/32 | .459 | 11.8 | 8.3 |
| 33 | 60Q33 | Q1 | 8.300 | 7.890 | 4 | 2-11/16 | 2-25/32 | 2-1/2 | 0 | 4-1/8 | 2-1/32 | .459 | 12.2 | 8.7 |
| 34 | 60Q34 | Q1 | 8.540 | 8.129 | 4 | 2-11/16 | 2-25/32 | 2-1/2 | 0 | 4-1/8 | 2-1/32 | .459 | 12.6 | 9.1 |
| 35 | 60Q35 | Q1 | 8.780 | 8.367 | 4 | 2-11/16 | 2-25/32 | 2-1/2 | 0 | 4-1/8 | 2-1/32 | .459 | 12.8 | 9.3 |
| 36 | 60Q36 | Q1 | 9.020 | 8.605 | 4 | 2-11/16 | 2-25/32 | 2-1/2 | 0 | 4-1/8 | 2-1/32 | .459 | 13.4 | 9.9 |
| 37 | 60Q37 | Q1 | 9.260 | 8.844 | 4 | 2-11/16 | 2-25/32 | 2-1/2 | 0 | 4-1/8 | 2-1/32 | .459 | 13.8 | 10.3 |
| 38 | 60Q38 | Q1 | 9.500 | 9.082 | 4 | 2-11/16 | 2-25/32 | 2-1/2 | 0 | 4-1/8 | 2-1/32 | .459 | 14.1 | 10.6 |
| 39 | 60Q39 | Q1 | 9.740 | 9.321 | 4 | 2-11/16 | 2-25/32 | 2-1/2 | 0 | 4-1/8 | 2-1/32 | .459 | 14.6 | 11.1 |
| 40 | 60Q40 | Q1 | 9.980 | 9.559 | 4 | 2-11/16 | 2-25/32 | 2-1/2 | 0 | 4-1/8 | 2-1/32 | .459 | 15.1 | 11.6 |
| 41 | 60Q41 | Q1 | 10.220 | 9.798 | 4 | 2-11/16 | 2-25/32 | 2-1/2 | 0 | 4-1/8 | 2-1/32 | .459 | 15.4 | 11.9 |
| 42 | 60Q42 | Q1 | 10.460 | 10.036 | 4 | 2-11/16 | 2-25/32 | 2-1/2 | 0 | 4-1/8 | 2-1/32 | .459 | 16.1 | 12.6 |
| 44 | 60Q44 | Q1 | 10.940 | 10.513 | 4 | 2-11/16 | 2-25/32 | 2-1/2 | 0 | 4-1/8 | 2-1/32 | .459 | 16.9 | 13.4 |
| 45 | 60Q45 | Q1 | 11.180 | 10.752 | 4 | 2-11/16 | 2-25/32 | 2-1/2 | 0 | 4-1/8 | 2-1/32 | .459 | 17.4 | 13.9 |
| 47 | 60Q47 | Q1 | 11.650 | 11.229 | 4 | 2-11/16 | 2-25/32 | 2-1/2 | 0 | 4-1/8 | 2-1/32 | .459 | 19.8 | 16.3 |
| 48 | 60Q48 | Q1 | 11.890 | 11.467 | 4 | 2-11/16 | 2-25/32 | 2-1/2 | 0 | 4-1/8 | 2-1/32 | .459 | 19.9 | 16.4 |
| 50 | 60Q50 | Q1 | 12.370 | 11.945 | 4 | 2-11/16 | 2-25/32 | 2-1/2 | 0 | 4-1/8 | 2-1/32 | .459 | 20.4 | 16.9 |
| 54 | 60Q54 | Q1 | 13.330 | 12.899 | 4 | 2-11/16 | 2-25/32 | 2-1/2 | 0 | 4-1/8 | 2-1/32 | .459 | 23.1 | 19.6 |
| 56 | 60Q56 | Q1 | 13.810 | 13.376 | 4 | 2-11/16 | 2-25/32 | 2-1/2 | 0 | 4-1/8 | 2-1/32 | .459 | 23.8 | 20.3 |
| 60 | 60Q60 | Q1 | 14.760 | 14.331 | 4 | 2-11/16 | 2-25/32 | 2-1/2 | 0 | 4-1/8 | 2-1/32 | .459 | 26.4 | 22.9 |
| 70 | 60Q70 | Q1 | 17.150 | 16.717 | 4 | 2-11/16 | 2-25/32 | 2-1/2 | 0 | 4-1/8 | 2-1/32 | .459 | 34.4 | 30.9 |
| 70 | 60R70 | R1 | 17.150 | 16.717 | 4 | 3-3/4 | 3-5/32 | 2-7/8 | 0 | 5-3/8 | 2-13/32 | .459 | 39.3 | 31.8 |
| 72 | 60Q72 | Q1 | 17.630 | 17.194 | 4 | 2-11/16 | 2-25/32 | 2-1/2 | 0 | 4-1/8 | 2-1/32 | .459 | 35.4 | 31.9 |
| 72 | 60R72 | R1 | 17.630 | 17.194 | 4 | 3-3/4 | 3-5/32 | 2-7/8 | 0 | 5-3/8 | 2-13/32 | .459 | 41.6 | 34.1 |
| 80 | 60Q80 | Q1 | 19.540 | 19.103 | 4 | 2-11/16 | 2-25/32 | 2-1/2 | 0 | 4-1/8 | 2-1/32 | .459 | 42.6 | 39.1 |
| 80 | 60R80 | R1 | 19.540 | 19.103 | 4 | 3-3/4 | 3-5/32 | 2-7/8 | 0 | 5-3/8 | 2-13/32 | .459 | 49.0 | 41.5 |
| 84 | 60Q84 | Q1 | 20.490 | 20.058 | 4 | 2-11/16 | 2-25/32 | 2-1/2 | 0 | 4-1/8 | 2-1/32 | .459 | 45.1 | 41.6 |
| 84 | 60R84 | R1 | 20.490 | 20.058 | 4 | 3-3/4 | 3-5/32 | 2-7/8 | 0 | 5-3/8 | 2-13/32 | .459 | 52.3 | 44.8 |
| 96 | 60Q96 | Q1 | 23.360 | 22.922 | 4 | 2-11/16 | 2-25/32 | 2-1/2 | 0 | 4-1/8 | 2-1/32 | .459 | 57.5 | 54.0 |
| 96 | 60R96 | R1 | 23.360 | 22.922 | 4 | 3-3/4 | 3-5/32 | 2-7/8 | 0 | 5-3/8 | 2-13/32 | .459 | 63.5 | 56.0 |
| 112 | 60Q112 | Q1 | 27.180 | 26.742 | 4 | 2-11/16 | 2-25/32 | 2-1/2 | 0 | 4-1/8 | 2-1/32 | .459 | 76.5 | 73.0 |
| 112 | 60R112 | R1 | 27.180 | 26.742 | 4 | 3-3/4 | 3-5/32 | 2-7/8 | 0 | 5-3/8 | 2-13/32 | .459 | 82.0 | 74.5 |



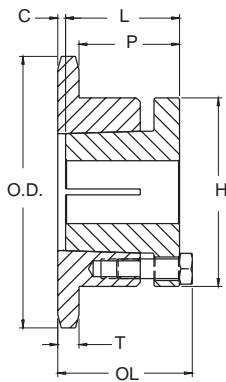
TYPE 3



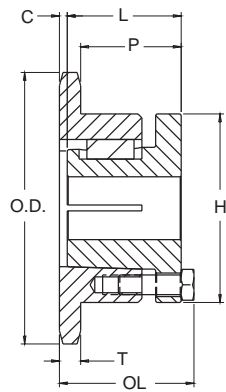
TYPE 4

Sprockets with "H" suffix have hardened teeth.

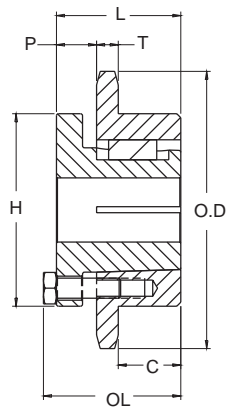
Single - MST Sprockets



TYPE 3



TYPE 4



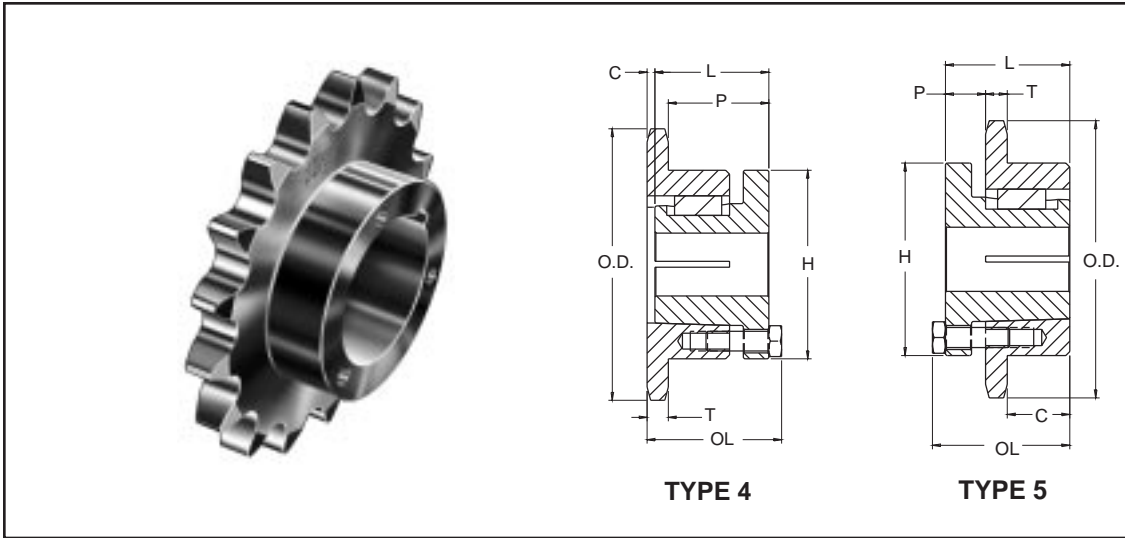
TYPE 5

| No. Teeth | Catalog Number | Bushing | Diameters | | Type | Max. Bore | Dimensions | | | | | | Weight (Approx.) | |
|-----------|----------------|---------|--------------|------------|------|-----------|------------|---------|--------|-------|---------|--------|------------------|----------|
| | | | Outside Dia. | Pitch Dia. | | | OL | L | C | H | P | T(nom) | With Hub | Rim Only |
| 10 | 80H10H | H | 3.680 | 3.236 | 3 | 1-1/2 | 2-3/32 | 11/4 | 21/32 | 2-1/2 | 1-21/64 | .575 | 2.8 | 2.0 |
| 11 | 80H11H | H | 4.010 | 3.550 | 3 | 1-1/2 | 1-1/2 | 1-1/4 | 1/16 | 2-1/2 | 3/4 | .575 | 2.1 | 1.3 |
| 11 | 80P11H | H | 4.010 | 3.550 | 4 | 1-3/4 | 2-11/32 | 1-15/16 | 5/32 | 3 | 1-17/32 | .575 | 2.4 | 1.6 |
| 12 | 80P12H | P1 | 4.330 | 3.864 | 4 | 1-3/4 | 2-3/16 | 1-15/16 | 0 | 3 | 1-3/8 | .575 | 3.3 | 2.0 |
| 13 | 80P13H | P1 | 4.660 | 4.179 | 4 | 1-3/4 | 2-3/16 | 1-15/16 | 0 | 3 | 1-3/8 | .575 | 3.7 | 2.4 |
| 14 | 80P14H | P1 | 4.980 | 4.494 | 4 | 1-3/4 | 2-3/16 | 1-15/16 | 0 | 3 | 1-3/8 | .575 | 3.9 | 2.6 |
| 14 | 80Q14H | Q1 | 4.980 | 4.494 | 4 | 2-11/16 | 2-25/32 | 2-1/2 | 0 | 4-1/8 | 1-15/16 | .575 | 6.4 | 2.9 |
| 15 | 80P15H | P1 | 5.300 | 4.810 | 4 | 1-3/4 | 2-3/16 | 1-15/16 | 0 | 3 | 1-3/8 | .575 | 4.3 | 3.0 |
| 15 | 80Q15H | Q1 | 5.300 | 4.810 | 4 | 2-11/16 | 2-25/32 | 2-1/2 | 0 | 4-1/8 | 1-15/16 | .575 | 6.9 | 3.4 |
| 16 | 80P16H | P1 | 5.630 | 5.126 | 4 | 1-3/4 | 2-3/16 | 1-15/16 | 0 | 3 | 1-3/8 | .575 | 4.8 | 3.5 |
| 16 | 80Q16H | Q1 | 5.630 | 5.126 | 4 | 2-11/16 | 2-25/32 | 2-1/2 | 0 | 4-1/8 | 1-15/16 | .575 | 8.1 | 4.6 |
| 17 | 80P17H | P1 | 5.950 | 5.442 | 4 | 1-3/4 | 2-3/16 | 1-15/16 | 0 | 3 | 1-3/8 | .575 | 5.1 | 3.8 |
| 17 | 80Q17H | Q1 | 5.950 | 5.442 | 4 | 2-11/16 | 2-25/32 | 2-1/2 | 0 | 4-1/8 | 1-15/16 | .575 | 8.8 | 5.3 |
| 18 | 80P18H | P1 | 6.270 | 5.759 | 4 | 1-3/4 | 2-3/16 | 1-15/16 | 0 | 3 | 1-3/8 | .575 | 5.7 | 4.4 |
| 18 | 80Q18H | Q1 | 6.270 | 5.759 | 4 | 2-11/16 | 2-25/32 | 2-1/2 | 0 | 4-1/8 | 1-15/16 | .575 | 9.5 | 6.0 |
| 19 | 80P19H | P1 | 6.590 | 6.076 | 4 | 1-3/4 | 2-3/16 | 1-15/16 | 0 | 3 | 1-3/8 | .575 | 6.2 | 4.9 |
| 19 | 80Q19H | Q1 | 6.590 | 6.076 | 4 | 2-11/16 | 2-25/32 | 2-1/2 | 0 | 4-1/8 | 1-15/16 | .575 | 10.0 | 6.5 |
| 20 | 80Q20H | Q1 | 6.910 | 6.392 | 4 | 2-11/16 | 2-25/32 | 2-1/2 | 0 | 4-1/8 | 1-15/16 | .575 | 10.5 | 7.0 |
| 21 | 80Q21H | Q1 | 7.240 | 6.710 | 4 | 2-11/16 | 2-25/32 | 2-1/2 | 0 | 4-1/8 | 1-15/16 | .575 | 10.8 | 7.3 |
| 22 | 80Q22H | Q1 | 7.560 | 7.027 | 4 | 2-11/16 | 2-25/32 | 2-1/2 | 0 | 4-1/8 | 1-15/16 | .575 | 11.7 | 8.2 |
| 23 | 80Q23H | Q1 | 7.880 | 7.344 | 4 | 2-11/16 | 2-25/32 | 2-1/2 | 0 | 4-1/8 | 1-15/16 | .575 | 12.3 | 8.8 |
| 24 | 80Q24H | Q1 | 8.200 | 7.661 | 4 | 2-11/16 | 2-25/32 | 2-1/2 | 0 | 4-1/8 | 1-15/16 | .575 | 12.6 | 9.1 |
| 25 | 80Q25H | Q1 | 8.520 | 7.979 | 4 | 2-11/16 | 2-25/32 | 2-1/2 | 0 | 4-1/8 | 1-15/16 | .575 | 13.1 | 9.6 |
| 26 | 80Q26H | Q1 | 8.840 | 8.296 | 4 | 2-11/16 | 2-25/32 | 2-1/2 | 0 | 4-1/8 | 1-15/16 | .575 | 14.1 | 10.6 |
| 27 | 80Q27H | Q1 | 9.160 | 8.614 | 4 | 2-11/16 | 2-25/32 | 2-1/2 | 0 | 4-1/8 | 1-15/16 | .575 | 14.4 | 10.9 |
| 28 | 80Q28H | Q1 | 9.480 | 8.931 | 4 | 2-11/16 | 2-25/32 | 2-1/2 | 0 | 4-1/8 | 1-15/16 | .575 | 15.9 | 12.4 |
| 29 | 80Q29H | Q1 | 9.800 | 9.249 | 4 | 2-11/16 | 2-25/32 | 2-1/2 | 0 | 4-1/8 | 1-15/16 | .575 | 16.1 | 12.6 |
| 30 | 80Q30H | Q1 | 10.110 | 9.567 | 4 | 2-11/16 | 2-25/32 | 2-1/2 | 0 | 4-1/8 | 1-15/16 | .575 | 16.9 | 13.4 |
| 31 | 80Q31 | Q1 | 10.430 | 9.885 | 4 | 2-11/16 | 2-25/32 | 2-1/2 | 0 | 4-1/8 | 1-15/16 | .575 | 17.4 | 13.9 |
| 32 | 80Q32 | Q1 | 10.750 | 10.202 | 4 | 2-11/16 | 2-25/32 | 2-1/2 | 0 | 4-1/8 | 1-15/16 | .575 | 18.3 | 14.8 |
| 33 | 80Q33 | Q1 | 11.070 | 10.520 | 4 | 2-11/16 | 2-25/32 | 2-1/2 | 0 | 4-1/8 | 1-15/16 | .575 | 19.0 | 15.5 |
| 34 | 80Q34 | Q1 | 11.390 | 10.838 | 4 | 2-11/16 | 2-25/32 | 2-1/2 | 0 | 4-1/8 | 1-15/16 | .575 | 19.8 | 16.3 |
| 35 | 80Q35 | Q1 | 11.710 | 11.156 | 4 | 2-11/16 | 2-25/32 | 2-1/2 | 0 | 4-1/8 | 1-15/16 | .575 | 21.3 | 17.8 |
| 36 | 80Q36 | Q1 | 12.030 | 11.474 | 4 | 2-11/16 | 2-25/32 | 2-1/2 | 0 | 4-1/8 | 1-15/16 | .575 | 21.6 | 18.1 |
| 36 | 80R36 | R1 | 12.030 | 11.474 | 4 | 3-3/4 | 3-5/32 | 2-7/8 | 0 | 5-3/8 | 2-5/16 | .575 | 27.0 | 19.5 |
| 37 | 80Q37 | Q1 | 12.350 | 11.792 | 4 | 2-11/16 | 2-25/32 | 2-1/2 | 0 | 4-1/8 | 1-15/16 | .575 | 22.0 | 18.5 |
| 38 | 80Q38 | Q1 | 12.670 | 12.110 | 4 | 2-11/16 | 2-25/32 | 2-1/2 | 0 | 4-1/8 | 1-15/16 | .575 | 23.5 | 20.0 |
| 39 | 80R39 | R1 | 12.990 | 12.428 | 4 | 3-3/4 | 3-5/32 | 2-7/8 | 0 | 5-3/8 | 2-5/16 | .575 | 30.3 | 22.8 |
| 40 | 80Q40 | Q1 | 13.310 | 12.746 | 4 | 2-11/16 | 2-25/32 | 2-1/2 | 0 | 4-1/8 | 1-15/16 | .575 | 25.4 | 21.9 |
| 40 | 80R40 | R1 | 13.310 | 12.746 | 4 | 3-3/4 | 3-5/32 | 2-7/8 | 0 | 5-3/8 | 2-5/16 | .575 | 30.9 | 23.4 |
| 41 | 80R41 | R1 | 13.630 | 13.064 | 4 | 3-3/4 | 3-5/32 | 2-7/8 | 0 | 5-3/8 | 2-5/16 | .575 | 31.4 | 23.9 |
| 42 | 80Q42 | Q1 | 13.940 | 13.382 | 4 | 2-11/16 | 2-25/32 | 2-1/2 | 0 | 4-1/8 | 1-15/16 | .575 | 27.3 | 23.8 |
| 42 | 80R42 | R1 | 13.940 | 13.382 | 4 | 3-3/4 | 3-5/32 | 2-7/8 | 0 | 5-3/8 | 2-5/16 | .575 | 32.9 | 25.4 |
| 44 | 80R44 | R1 | 14.580 | 14.018 | 4 | 3-3/4 | 3-5/32 | 2-7/8 | 0 | 5-3/8 | 2-5/16 | .575 | 34.7 | 27.2 |
| 45 | 80Q45 | Q1 | 14.900 | 14.336 | 4 | 2-11/16 | 2-25/32 | 2-1/2 | 0 | 4-1/8 | 1-15/16 | .575 | 31.3 | 27.8 |
| 45 | 80R45 | R1 | 14.900 | 14.336 | 4 | 3-3/4 | 3-5/32 | 2-7/8 | 0 | 5-3/8 | 2-5/16 | .575 | 36.0 | 28.5 |
| 47 | 80R47 | R1 | 15.540 | 14.972 | 4 | 3-3/4 | 3-5/32 | 2-7/8 | 0 | 5-3/8 | 2-5/16 | .575 | 38.5 | 31.0 |
| 48 | 80Q48 | Q1 | 15.860 | 15.290 | 4 | 2-11/16 | 2-25/32 | 2-1/2 | 0 | 4-1/8 | 1-15/16 | .575 | 34.3 | 30.8 |
| 48 | 80R48 | R1 | 15.860 | 15.290 | 4 | 3-3/4 | 3-5/32 | 2-7/8 | 0 | 5-3/8 | 2-5/16 | .575 | 39.8 | 32.3 |
| 50 | 80R50 | R1 | 16.500 | 15.926 | 4 | 3-3/4 | 3-5/32 | 2-7/8 | 0 | 5-3/8 | 2-5/16 | .575 | 42.6 | 35.1 |
| 54 | 80Q54 | Q1 | 17.770 | 17.198 | 4 | 2-11/16 | 2-25/32 | 2-1/2 | 0 | 4-1/8 | 1-15/16 | .575 | 42.0 | 38.5 |
| 54 | 80R54 | R1 | 17.770 | 17.198 | 4 | 3-3/4 | 3-5/32 | 2-7/8 | 0 | 5-3/8 | 2-5/16 | .575 | 48.3 | 40.8 |
| 56 | 80R56 | R1 | 18.410 | 17.835 | 4 | 3-3/4 | 3-5/32 | 2-7/8 | 0 | 5-3/8 | 2-5/16 | .575 | 51.5 | 44.0 |
| 60 | 80Q60 | Q1 | 19.680 | 19.107 | 4 | 2-11/16 | 2-25/32 | 2-1/2 | 0 | 4-1/8 | 1-15/16 | .575 | 50.3 | 46.8 |
| 60 | 80R60 | R1 | 19.680 | 19.107 | 4 | 3-3/4 | 3-5/32 | 2-7/8 | 0 | 5-3/8 | 2-5/16 | .575 | 54.8 | 47.3 |
| 70 | 80Q70 | Q1 | 22.870 | 22.289 | 4 | 2-11/16 | 2-25/32 | 2-1/2 | 0 | 4-1/8 | 2-5/16 | .575 | 63.5 | 60.0 |
| 70 | 80R70 | R1 | 22.870 | 22.289 | 4 | 3-3/4 | 3-5/32 | 2-7/8 | 0 | 5-3/8 | 2-5/16 | .575 | 71.0 | 63.5 |
| 72 | 80Q72 | Q1 | 23.500 | 22.926 | 4 | 2-11/16 | 2-25/32 | 2-1/2 | 0 | 4-1/8 | 2-5/16 | .575 | 71.0 | 67.5 |
| 72 | 80R72 | R1 | 23.500 | 22.926 | 5 | 3-3/4 | 3-5/32 | 2-7/8 | 1-7/16 | 5-3/8 | 7/8 | .575 | 76.9 | 69.4 |
| 80 | 80R80 | R1 | 26.050 | 25.471 | 5 | 3-3/4 | 3-5/32 | 2-7/8 | 1-7/16 | 5-3/8 | 7/8 | .575 | 92.5 | 85.0 |
| 84 | 80R84 | R1 | 27.330 | 26.744 | 5 | 3-3/4 | 3-5/32 | 2-7/8 | 1-7/16 | 5-3/8 | 7/8 | .575 | 97.5 | 90.0 |
| 96 | 80R96 | R1 | 31.150 | 30.563 | 5 | 3-3/4 | 3-5/32 | 2-7/8 | 1-7/16 | 5-3/8 | 7/8 | .575 | 117.5 | 110.0 |
| 112 | 80S112 | S1 | 36.240 | 36.655 | 5 | 4-1/4 | 4-3/4 | 4-3/8 | 2-3/4 | 6-3/8 | 1-1/8 | .575 | 178.5 | 165.0 |

Sprockets with "H" suffix have hardened teeth.

No. 100 1 1/4" Pitch

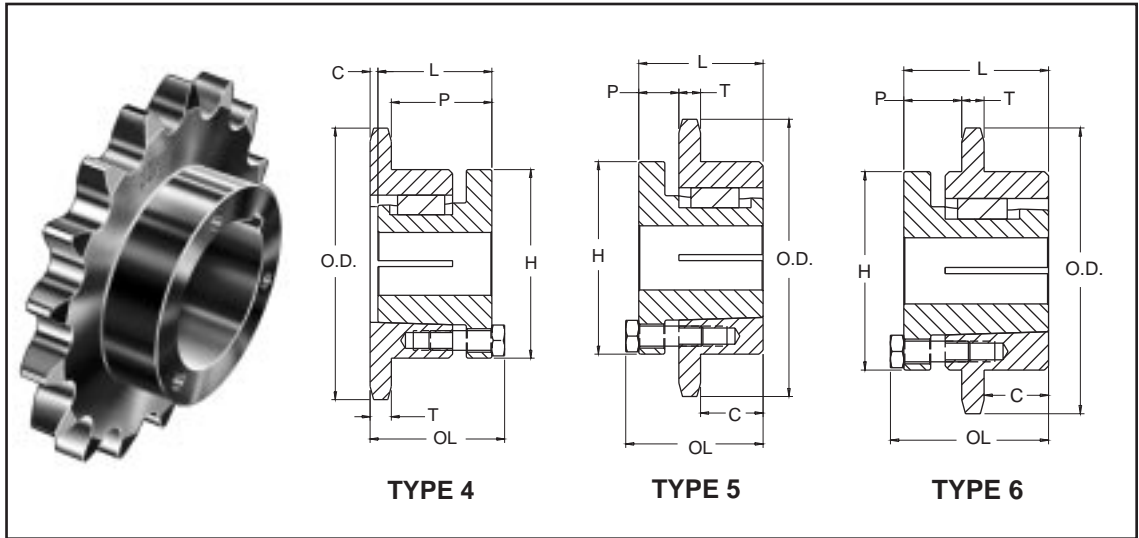
MST Sprockets



Single - MST Sprockets

| No. Teeth | Catalog Number | Bush-ing | Diameters | | Type | Max. Bore | Dimensions | | | | | | Weight (Approx.) | |
|-----------|----------------|----------|--------------|------------|------|-----------|------------|---------|--------|-------|---------|--------|------------------|----------|
| | | | Outside Dia. | Pitch Dia. | | | OL | L | C | H | P | T(nom) | With Hub | Rim Only |
| 11 | 100P11H | P1 | 5.010 | 4.437 | 4 | 1-3/4 | 2-3/16 | 1-15/16 | 0 | 3 | 1-1/4 | .692 | 4.1 | 2.8 |
| 12 | 100Q12H | Q1 | 5.420 | 4.830 | 4 | 2-11/16 | 2-27/32 | 2-1/2 | 1/16 | 4-1/8 | 1 7/8 | .692 | 7.0 | 3.5 |
| 13 | 100Q13H | Q1 | 5.820 | 5.223 | 4 | 2-11/16 | 2-27/32 | 2-1/2 | 1/16 | 4-1/8 | 1 7/8 | .692 | 7.8 | 4.3 |
| 14 | 100Q14H | Q1 | 6.230 | 5.617 | 4 | 2-11/16 | 2-25/32 | 2-1/2 | 0 | 4-1/8 | 1-13/16 | .692 | 9.1 | 5.6 |
| 15 | 100Q15H | Q1 | 6.630 | 6.012 | 4 | 2-11/16 | 2-25/32 | 2-1/2 | 0 | 4-1/8 | 1-13/16 | .692 | 10.1 | 6.6 |
| 16 | 100Q16H | Q1 | 7.030 | 6.407 | 4 | 2-11/16 | 2-25/32 | 2-1/2 | 0 | 4-1/8 | 1-13/16 | .692 | 10.9 | 7.4 |
| 17 | 100Q17H | Q1 | 7.440 | 6.803 | 4 | 2-11/16 | 2-25/32 | 2-1/2 | 0 | 4-1/8 | 1-13/16 | .692 | 11.7 | 8.2 |
| 18 | 100Q18H | Q1 | 7.840 | 7.198 | 4 | 2-11/16 | 2-25/32 | 2-1/2 | 0 | 4-1/8 | 1-13/16 | .692 | 12.5 | 9.0 |
| 19 | 100Q19H | Q1 | 8.240 | 7.595 | 4 | 2-11/16 | 2-25/32 | 2-1/2 | 0 | 4-1/8 | 1-13/16 | .692 | 13.3 | 9.8 |
| 20 | 100Q20H | Q1 | 8.640 | 7.991 | 4 | 2-11/16 | 2-25/32 | 2-1/2 | 0 | 4-1/8 | 1-13/16 | .692 | 14.4 | 10.9 |
| 21 | 100Q21H | Q1 | 9.040 | 8.387 | 4 | 2-11/16 | 2-25/32 | 2-1/2 | 0 | 4-1/8 | 1-13/16 | .692 | 15.3 | 11.8 |
| 21 | 100R21H | R1 | 9.040 | 8.387 | 4 | 3-3/4 | 3-5/32 | 2-7/8 | 0 | 5-3/8 | 2-3/16 | .692 | 20.8 | 13.3 |
| 22 | 100Q22H | Q1 | 9.440 | 8.783 | 4 | 2-11/16 | 2-25/32 | 2-1/2 | 0 | 4-1/8 | 1-13/16 | .692 | 16.1 | 12.6 |
| 23 | 100Q23H | Q1 | 9.840 | 9.180 | 4 | 2-11/16 | 2-25/32 | 2-1/2 | 0 | 4-1/8 | 1-13/16 | .692 | 17.3 | 13.8 |
| 24 | 100Q24H | Q1 | 10.250 | 9.577 | 4 | 2-11/16 | 2-25/32 | 2-1/2 | 0 | 4-1/8 | 1-13/16 | .692 | 18.9 | 15.4 |
| 24 | 100R24H | R1 | 10.250 | 9.577 | 4 | 3-3/4 | 3-5/32 | 2-7/8 | 0 | 5-3/8 | 2-3/16 | .692 | 23.1 | 15.6 |
| 25 | 100Q25H | Q1 | 10.650 | 9.973 | 4 | 2-11/16 | 2-25/32 | 2-1/2 | 0 | 4-1/8 | 1-13/16 | .692 | 19.5 | 16.0 |
| 25 | 100R25H | R1 | 10.650 | 9.973 | 4 | 3-3/4 | 3-5/32 | 2-7/8 | 0 | 5-3/8 | 2-3/16 | .692 | 24.5 | 17.0 |
| 26 | 100Q26H | Q1 | 11.050 | 10.370 | 4 | 2-11/16 | 2-25/32 | 2-1/2 | 0 | 4-1/8 | 1-13/16 | .692 | 20.8 | 17.3 |
| 26 | 100R26H | R1 | 11.050 | 10.370 | 4 | 3-3/4 | 3-5/32 | 2-7/8 | 0 | 5-3/8 | 2-3/16 | .692 | 25.4 | 17.9 |
| 27 | 100Q27H | Q1 | 11.440 | 10.767 | 4 | 2-11/16 | 2-25/32 | 2-1/2 | 0 | 4-1/8 | 1-13/16 | .692 | 21.7 | 18.2 |
| 27 | 100R27H | R1 | 11.440 | 10.767 | 4 | 3-3/4 | 3-5/32 | 2-7/8 | 0 | 5-3/8 | 2-3/16 | .692 | 27.1 | 19.6 |
| 28 | 100Q28H | Q1 | 11.840 | 11.164 | 4 | 2-11/16 | 2-25/32 | 2-1/2 | 0 | 4-1/8 | 1-13/16 | .692 | 23.1 | 19.6 |
| 28 | 100R28H | R1 | 11.840 | 11.164 | 4 | 3-3/4 | 3-5/32 | 2-7/8 | 0 | 5-3/8 | 2-3/16 | .692 | 28.5 | 21.0 |
| 30 | 100Q30H | Q1 | 12.640 | 11.958 | 4 | 2-11/16 | 2-25/32 | 2-1/2 | 0 | 4-1/8 | 1-13/16 | .692 | 25.9 | 22.4 |
| 30 | 100R30H | R1 | 12.640 | 11.958 | 4 | 3-3/4 | 3-5/32 | 2-7/8 | 0 | 5-3/8 | 2-3/16 | .692 | 32.0 | 24.5 |
| 32 | 100Q32 | Q1 | 13.440 | 12.753 | 4 | 2-11/16 | 2-25/32 | 2-1/2 | 0 | 4-1/8 | 1-13/16 | .692 | 28.8 | 25.3 |
| 32 | 100R32 | R1 | 13.440 | 12.753 | 4 | 3-3/4 | 3-5/32 | 2-7/8 | 0 | 5-3/8 | 2-3/16 | .692 | 34.0 | 26.5 |
| 35 | 100Q35 | Q1 | 14.640 | 13.945 | 4 | 2-11/16 | 2-25/32 | 2-1/2 | 0 | 4-1/8 | 1-13/16 | .692 | 33.7 | 30.2 |
| 35 | 100R35 | R1 | 14.640 | 13.945 | 4 | 3-3/4 | 3-5/32 | 2-7/8 | 0 | 5-3/8 | 2-3/16 | .692 | 37.3 | 29.8 |
| 36 | 100R36 | R1 | 15.040 | 14.342 | 4 | 3-3/4 | 3-5/32 | 2-7/8 | 0 | 5-3/8 | 2-3/16 | .692 | 40.5 | 33.0 |
| 40 | 100R40 | R1 | 16.630 | 15.932 | 4 | 3-3/4 | 3-5/32 | 2-7/8 | 0 | 5-3/8 | 2-3/16 | .692 | 48.4 | 40.9 |
| 42 | 100R42 | R1 | 17.430 | 16.727 | 4 | 3-3/4 | 3-5/32 | 2-7/8 | 0 | 5-3/8 | 2-3/16 | .692 | 51.8 | 44.3 |
| 45 | 100R45 | R1 | 18.630 | 17.920 | 4 | 3-3/4 | 3-5/32 | 2-7/8 | 0 | 5-3/8 | 2-3/16 | .692 | 58.0 | 50.5 |
| 48 | 100R48 | R1 | 19.820 | 19.112 | 4 | 3-3/4 | 3-5/32 | 2-7/8 | 0 | 5-3/8 | 2-3/16 | .692 | 65.0 | 57.5 |
| 54 | 100R54 | R1 | 22.210 | 21.498 | 5 | 3-3/4 | 3-5/32 | 2-7/8 | 1-5/16 | 5-3/8 | 7/8 | .692 | 76.5 | 69.0 |
| 60 | 100R60 | R1 | 24.600 | 23.884 | 5 | 3-3/4 | 3-5/32 | 2-7/8 | 1-5/16 | 5-3/8 | 7/8 | .692 | 91.5 | 84.0 |
| 70 | 100R70 | R1 | 28.580 | 27.862 | 5 | 3-3/4 | 3-5/32 | 2-7/8 | 1-5/16 | 5-3/8 | 7/8 | .692 | 111.5 | 104.0 |
| 72 | 100R72 | R1 | 29.380 | 28.657 | 5 | 3-3/4 | 3-5/32 | 2-7/8 | 1-5/16 | 5-3/8 | 7/8 | .692 | 113.5 | 106.0 |
| 80 | 100R80 | R1 | 32.570 | 31.839 | 5 | 3-3/4 | 3-5/32 | 2-7/8 | 1-5/16 | 5-3/8 | 7/8 | .692 | 142.5 | 135.0 |
| 84 | 100R84 | R1 | 34.160 | 33.430 | 5 | 3-3/4 | 3-5/32 | 2-7/8 | 1-5/16 | 5-3/8 | 7/8 | .692 | 145.5 | 138.0 |

Sprockets with "H" suffix have hardened teeth.



Single - MST Sprockets

| No. Teeth | Catalog Number | Bush- ing | Diameters | | Type | Max. Bore | Dimensions | | | | | | Weight (Approx.) | |
|-----------|----------------|-----------|--------------|------------|------|-----------|------------|-------|--------|-------|---------|--------|------------------|----------|
| | | | Outside Dia. | Pitch Dia. | | | OL | L | C | H | P | T(nom) | With Hub | Rim Only |
| 11 | 120Q11H | Q1 | 6.010 | 5.324 | 4 | 2-11/16 | 2-25/32 | 2-1/2 | 0 | 4-1/8 | 1 9/16 | .924 | 8.3 | 4.8 |
| 12 | 120Q12H | Q1 | 6.500 | 5.796 | 4 | 2-11/16 | 2-25/32 | 2-1/2 | 0 | 4-1/8 | 1 9/16 | .924 | 9.8 | 6.3 |
| 13 | 120Q13H | Q1 | 6.990 | 6.268 | 4 | 2-11/16 | 2-25/32 | 2-1/2 | 0 | 4-1/8 | 1 9/16 | .924 | 11.4 | 7.9 |
| 14 | 120Q14H | Q1 | 7.470 | 6.741 | 4 | 2-11/16 | 2-25/32 | 2-1/2 | 0 | 4-1/8 | 1 9/16 | .924 | 12.7 | 9.2 |
| 15 | 120Q15H | Q1 | 7.960 | 7.215 | 4 | 2-11/16 | 2-25/32 | 2-1/2 | 0 | 4-1/8 | 1 9/16 | .924 | 13.9 | 10.4 |
| 16 | 120Q16H | Q1 | 8.440 | 7.689 | 4 | 2-11/16 | 2-25/32 | 2-1/2 | 0 | 4-1/8 | 1-15/16 | .924 | 15.3 | 11.8 |
| 16 | 120R16H | R1 | 8.440 | 7.689 | 4 | 3-3/4 | 3-5/32 | 2-7/8 | 0 | 5-3/8 | 1-15/16 | .924 | 19.5 | 12.0 |
| 17 | 120Q17H | Q1 | 8.920 | 8.163 | 4 | 2-11/16 | 2-25/32 | 2-1/2 | 0 | 4-1/8 | 1-15/16 | .924 | 16.9 | 13.4 |
| 17 | 120R17H | R1 | 8.920 | 8.163 | 4 | 3-3/4 | 3-5/32 | 2-7/8 | 0 | 5-3/8 | 1-15/16 | .924 | 21.2 | 13.7 |
| 18 | 120Q18H | Q1 | 9.410 | 8.638 | 4 | 2-11/16 | 2-25/32 | 2-1/2 | 0 | 4-1/8 | 1-15/16 | .924 | 19.1 | 15.6 |
| 18 | 120R18H | R1 | 9.410 | 8.638 | 4 | 3-3/4 | 3-5/32 | 2-7/8 | 0 | 5-3/8 | 1-15/16 | .924 | 22.5 | 15.0 |
| 19 | 120R19H | R1 | 9.890 | 9.113 | 4 | 3-3/4 | 3-5/32 | 2-7/8 | 0 | 5-3/8 | 1-15/16 | .924 | 24.4 | 16.9 |
| 20 | 120R20H | R1 | 10.370 | 9.589 | 4 | 3-3/4 | 3-5/32 | 2-7/8 | 0 | 5-3/8 | 1-15/16 | .924 | 26.3 | 18.8 |
| 21 | 120R21H | R1 | 10.850 | 10.064 | 4 | 3-3/4 | 3-5/32 | 2-7/8 | 0 | 5-3/8 | 1-15/16 | .924 | 28.2 | 20.7 |
| 22 | 120R22H | R1 | 11.330 | 10.540 | 4 | 3-3/4 | 3-5/32 | 2-7/8 | 0 | 5-3/8 | 1-15/16 | .924 | 30.0 | 22.5 |
| 23 | 120R23H | R1 | 11.810 | 11.016 | 4 | 3-3/4 | 3-5/32 | 2-7/8 | 0 | 5-3/8 | 1-15/16 | .924 | 31.8 | 24.3 |
| 24 | 120R24H | R1 | 12.290 | 11.492 | 4 | 3-3/4 | 3-5/32 | 2-7/8 | 0 | 5-3/8 | 1-15/16 | .924 | 34.6 | 27.1 |
| 25 | 120R25H | R1 | 12.770 | 11.968 | 4 | 3-3/4 | 3-5/32 | 2-7/8 | 0 | 5-3/8 | 1-15/16 | .924 | 36.6 | 29.1 |
| 26 | 120R26H | R1 | 13.250 | 12.444 | 5 | 3-3/4 | 3-5/32 | 2-7/8 | 1-1/16 | 5-3/8 | 7/8 | .924 | 40.8 | 33.3 |
| 28 | 120R28H | R1 | 14.210 | 13.397 | 5 | 3-3/4 | 3-5/32 | 2-7/8 | 1-1/16 | 5-3/8 | 7/8 | .924 | 45.5 | 38.0 |
| 30 | 120R30H | R1 | 15.170 | 14.350 | 5 | 3-3/4 | 3-5/32 | 2-7/8 | 1-1/16 | 5-3/8 | 7/8 | .924 | 50.8 | 43.3 |
| 32 | 120R32 | R1 | 16.130 | 15.303 | 5 | 3-3/4 | 3-5/32 | 2-7/8 | 1-1/16 | 5-3/8 | 7/8 | .924 | 56.9 | 49.4 |
| 35 | 120R35 | R2 | 17.570 | 16.734 | 6 | 3-5/8 | 5-5/32 | 4-7/8 | 2 | 5-3/8 | 1-15/16 | .924 | 79.0 | 68.0 |
| 36 | 120R36 | R2 | 18.050 | 17.211 | 6 | 3-5/8 | 5-5/32 | 4-7/8 | 2 | 5-3/8 | 1-15/16 | .924 | 83.0 | 72.0 |
| 40 | 120R40 | R2 | 19.960 | 19.118 | 6 | 3-5/8 | 5-5/32 | 4-7/8 | 2 | 5-3/8 | 1-15/16 | .924 | 93.0 | 82.0 |
| 40 | 120S40 | S1 | 19.960 | 19.118 | 5 | 4-1/4 | 4-3/4 | 4-3/8 | 2-3/8 | 6-3/8 | 1-1/16 | .924 | 96.5 | 83.0 |
| 42 | 120S42 | S1 | 20.920 | 20.072 | 5 | 4-1/4 | 4-3/4 | 4-3/8 | 2-3/8 | 6-3/8 | 1-1/16 | .924 | 103.5 | 90.0 |
| 45 | 120R45 | R2 | 22.350 | 21.503 | 6 | 3-5/8 | 5-5/32 | 4-7/8 | 2 | 5-3/8 | 1-15/16 | .924 | 113.0 | 102.0 |
| 45 | 120S45 | S1 | 22.350 | 21.503 | 5 | 4-1/4 | 4-3/4 | 4-3/8 | 2-3/8 | 6-3/8 | 1-1/16 | .924 | 113.5 | 100.0 |
| 48 | 120S48 | S1 | 23.790 | 22.935 | 5 | 4-1/4 | 4-3/4 | 4-3/8 | 2-3/8 | 6-3/8 | 1-1/16 | .924 | 124.5 | 111.0 |
| 54 | 120S54 | S1 | 26.650 | 25.798 | 5 | 4-1/4 | 4-3/4 | 4-3/8 | 2-3/8 | 6-3/8 | 1-1/16 | .924 | 151.5 | 138.0 |
| 60 | 120R60 | R2 | 29.520 | 28.661 | 6 | 3-5/8 | 5-5/32 | 4-7/8 | 2 | 5-3/8 | 1-15/16 | .924 | 190.0 | 179.0 |
| 60 | 120S60 | S1 | 29.520 | 28.661 | 5 | 4-1/4 | 4-3/4 | 4-3/8 | 2-3/8 | 6-3/8 | 1-1/16 | .924 | 193.5 | 180.0 |
| 70 | 120R70 | R2 | 34.300 | 33.434 | 6 | 3-5/8 | 5-5/32 | 4-7/8 | 2 | 5-3/8 | 1-15/16 | .924 | 159.0 | 148.0 |
| 70 | 120S70 | S2 | 34.300 | 33.434 | 5 | 4-3/16 | 7-1/8 | 6-3/4 | 2-7/8 | 6-3/8 | 2-15/16 | .924 | 186.0 | 167.0 |
| 80 | 120R80 | R2 | 39.080 | 38.207 | 6 | 3-5/8 | 5-5/32 | 4-7/8 | 2 | 5-3/8 | 1-15/16 | .924 | 302.0 | 291.0 |
| 80 | 120S80 | S2 | 39.080 | 38.207 | 6 | 4-3/16 | 7-1/8 | 6-3/4 | 2-7/8 | 6-3/8 | 2-15/16 | .924 | 324.0 | 305.0 |

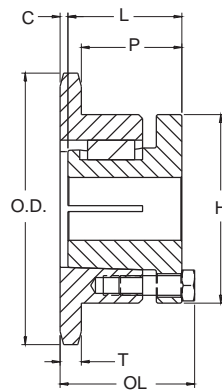
Sprockets with "H" suffix have hardened teeth.

No. 140

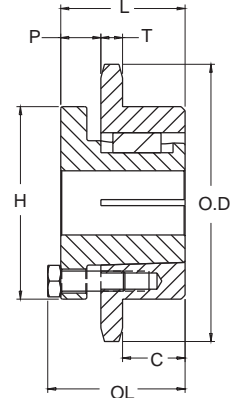
13/4" Pitch

MST Sprockets

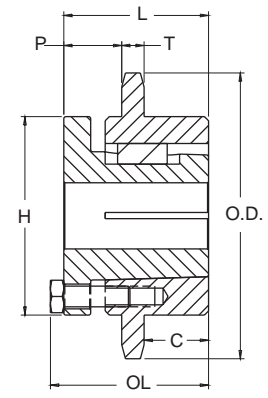
Martin



TYPE 4



TYPE 5

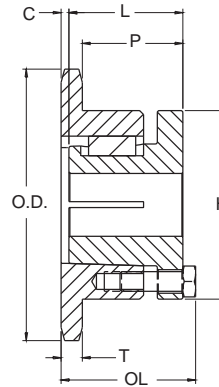


TYPE 6

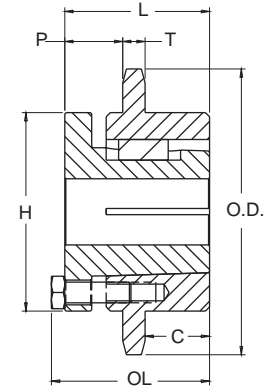
Single - MST Sprockets

| No. Teeth | Catalog Number | Bush-ing | Diameters | | Type | Max. Bore | Dimensions | | | | | | Weight (Approx.) | |
|-----------|----------------|----------|--------------|------------|------|-----------|------------|-------|--------|-------|---------|--------|------------------|----------|
| | | | Outside Dia. | Pitch Dia. | | | OL | L | C | H | P | T(nom) | With Hub | Rim Only |
| 11 | 140Q11H | Q1 | 7.010 | 6.212 | 4 | 2-11/16 | 2-25/32 | 2-1/2 | 0 | 4-1/8 | 1 9/16 | .924 | 9.9 | 6.4 |
| 12 | 140Q12H | Q1 | 7.580 | 6.762 | 4 | 2-11/16 | 2-25/32 | 2-1/2 | 0 | 4-1/8 | 1 9/16 | .924 | 12.5 | 9.0 |
| 13 | 140R13H | R1 | 8.150 | 7.313 | 4 | 3-3/4 | 3-5/32 | 2-7/8 | 0 | 5-3/8 | 1-15/16 | .924 | 18.6 | 11.1 |
| 14 | 140R14H | R1 | 8.720 | 7.864 | 4 | 3-3/4 | 3-5/32 | 2-7/8 | 0 | 5-3/8 | 1-15/16 | .924 | 20.1 | 12.6 |
| 15 | 140R15H | R1 | 9.280 | 8.417 | 4 | 3-3/4 | 3-5/32 | 2-7/8 | 0 | 5-3/8 | 1-1/16 | .924 | 22.2 | 14.7 |
| 16 | 140R16H | R1 | 9.850 | 8.970 | 4 | 3-3/4 | 3-5/32 | 2-7/8 | 0 | 5-3/8 | 1-1/16 | .924 | 24.0 | 16.5 |
| 17 | 140R17H | R1 | 10.410 | 9.524 | 4 | 3-3/4 | 3-5/32 | 2-7/8 | 0 | 5-3/8 | 1-15/16 | .924 | 26.0 | 18.5 |
| 18 | 140R18H | R1 | 10.980 | 10.078 | 4 | 3-3/4 | 3-5/32 | 2-7/8 | 0 | 5-3/8 | 1-15/16 | .924 | 28.0 | 20.5 |
| 19 | 140R19H | R1 | 11.540 | 10.632 | 4 | 3-3/4 | 3-5/32 | 2-7/8 | 0 | 5-3/8 | 1-15/16 | .924 | 30.5 | 23.0 |
| 20 | 140R20H | R1 | 12.100 | 11.187 | 4 | 3-3/4 | 3-5/32 | 2-7/8 | 0 | 5-3/8 | 1-15/16 | .924 | 32.9 | 25.4 |
| 21 | 140R21H | R1 | 12.660 | 11.742 | 4 | 3-3/4 | 3-5/32 | 2-7/8 | 0 | 5-3/8 | 1-15/16 | .924 | 35.3 | 27.8 |
| 22 | 140R22H | R1 | 13.220 | 12.297 | 5 | 3-3/4 | 3-5/32 | 2-7/8 | 1-1/16 | 5-3/8 | 7/8 | .924 | 40.0 | 32.5 |
| 23 | 140R23H | R1 | 13.780 | 12.852 | 5 | 3-3/4 | 3-5/32 | 2-7/8 | 1-1/16 | 5-3/8 | 7/8 | .924 | 43.5 | 36.0 |
| 24 | 140R24H | R1 | 14.340 | 13.407 | 5 | 3-3/4 | 3-5/32 | 2-7/8 | 1-1/16 | 5-3/8 | 7/8 | .924 | 45.1 | 37.6 |
| 25 | 140R25H | R1 | 14.900 | 13.963 | 5 | 3-3/4 | 3-5/32 | 2-7/8 | 1-1/16 | 5-3/8 | 7/8 | .924 | 47.8 | 40.3 |
| 26 | 140R26H | R1 | 15.460 | 14.518 | 5 | 3-3/4 | 3-5/32 | 2-7/8 | 1-1/16 | 5-3/8 | 7/8 | .924 | 51.5 | 44.0 |
| 30 | 140R30H | R2 | 17.700 | 16.742 | 5 | 3-5/8 | 5-5/32 | 4-7/8 | 2 | 5-3/8 | 7/8 | .924 | 79.0 | 68.0 |
| 35 | 140R35 | R2 | 20.490 | 19.523 | 6 | 3-5/8 | 5-5/32 | 4-7/8 | 2 | 5-3/8 | 7/8 | .924 | 99.0 | 88.0 |
| 36 | 140R36 | R2 | 21.050 | 20.079 | 6 | 3-5/8 | 5-5/32 | 4-7/8 | 2 | 5-3/8 | 7/8 | .924 | 101.0 | 90.0 |
| 36 | 140S36 | S1 | 21.050 | 20.079 | 5 | 4-1/4 | 43/4 | 4-3/8 | 2-3/8 | 6-3/8 | 1-1/16 | .924 | 102.5 | 89.0 |
| 40 | 140R40 | R2 | 23.290 | 22.305 | 6 | 3-5/8 | 5-5/32 | 4-7/8 | 2 | 5-3/8 | 7/8 | .924 | 120.0 | 109.0 |
| 40 | 140S40 | S1 | 23.290 | 22.305 | 5 | 4-1/4 | 4-3/4 | 4-3/8 | 2-3/8 | 6-3/8 | 1-1/16 | .924 | 120.5 | 107.0 |
| 45 | 140S45 | S1 | 26.080 | 25.087 | 5 | 4-1/4 | 4-3/4 | 43/8 | 2-3/8 | 6-3/8 | 1-1/16 | .924 | 145.5 | 132.0 |
| 48 | 140S48 | S2 | 27.750 | 26.757 | 6 | 4-3/16 | 7-1/2 | 6-3/4 | 2-7/8 | 6-3/8 | 2-15/16 | .924 | 188.0 | 169.0 |
| 54 | 140S54 | S2 | 31.100 | 30.097 | 6 | 4-3/16 | 7-1/2 | 6-3/4 | 2-7/8 | 6-3/8 | 2-15/16 | .924 | 227.0 | 208.0 |
| 60 | 140S60 | S2 | 34.440 | 33.438 | 6 | 4-3/16 | 7-1/2 | 6-3/4 | 2-7/8 | 6-3/8 | 2-15/16 | .924 | 249.0 | 230.0 |
| 70 | 140S70 | S2 | 40.020 | 39.006 | 6 | 4-3/16 | 7-1/2 | 6-3/4 | 2-7/8 | 6-3/8 | 2-15/16 | .924 | 330.0 | 311.0 |
| 80 | 140S80 | S2 | 45.590 | 44.575 | 6 | 4-3/16 | 7-1/2 | 6-3/4 | 2-7/8 | 6-3/8 | 2-15/16 | .924 | 261.0 | 242.0 |

Sprockets with "H" suffix have hardened teeth.



TYPE 4



TYPE 6

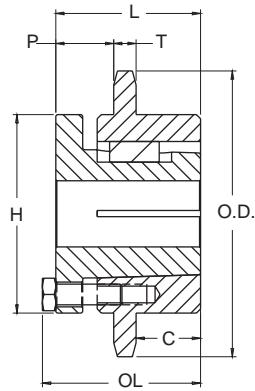
Single - MST Sprockets

| No. Teeth | Catalog Number | Bush-ing | Diameters | | Type | Max. Bore | Dimensions | | | | | | Weight (Approx.) | |
|-----------|----------------|----------|--------------|------------|------|-----------|------------|-------|---------|-------|---------|--------|------------------|----------|
| | | | Outside Dia. | Pitch Dia. | | | OL | L | C | H | P | T(nom) | With Hub | Rim Only |
| 11 | 160R11H | R1 | 8.010 | 7.099 | 4 | 3-3/4 | 3-13/32 | 2-7/8 | 1/4 | 5-3/8 | 1-31/32 | 1.156 | 18.3 | 10.8 |
| 12 | 160R12H | R1 | 8.660 | 7.727 | 4 | 3-3/4 | 3-13/32 | 2-7/8 | 1/4 | 5-3/8 | 1-31/32 | 1.156 | 21.7 | 14.2 |
| 13 | 160R13H | R1 | 9.310 | 8.357 | 4 | 3-3/4 | 3-5/32 | 2-7/8 | 0 | 5-3/8 | 1-23/32 | 1.156 | 23.0 | 15.5 |
| 14 | 160R14H | R1 | 9.960 | 8.988 | 4 | 3-3/4 | 3-5/32 | 2-7/8 | 0 | 5-3/8 | 1-23/32 | 1.156 | 26.0 | 18.5 |
| 15 | 160R15H | R1 | 10.610 | 9.620 | 4 | 3-3/4 | 3-5/32 | 2-7/8 | 0 | 5-3/8 | 1-23/32 | 1.156 | 29.1 | 21.6 |
| 16 | 160R16H | R1 | 11.260 | 10.252 | 4 | 3-3/4 | 3-5/32 | 2-7/8 | 0 | 5-3/8 | 1-23/32 | 1.156 | 32.5 | 25.0 |
| 17 | 160R17H | R1 | 11.900 | 10.885 | 4 | 3-3/4 | 3-5/32 | 2-7/8 | 0 | 5-3/8 | 1-23/32 | 1.156 | 35.5 | 28.0 |
| 18 | 160R18H | R1 | 12.540 | 11.518 | 4 | 3-3/4 | 3-5/32 | 2-7/8 | 0 | 5-3/8 | 1-23/32 | 1.156 | 39.4 | 31.9 |
| 19 | 160R19H | R1 | 13.190 | 12.151 | 4 | 3-3/4 | 3-5/32 | 2-7/8 | 0 | 5-3/8 | 1-23/32 | 1.156 | 43.4 | 35.9 |
| 20 | 160R20H | R2 | 13.830 | 12.785 | 6 | 3-5/8 | 5-5/32 | 4-7/8 | 2 | 5-3/8 | 1-23/32 | 1.156 | 62.0 | 51.0 |
| 21 | 160R21H | R2 | 14.470 | 13.419 | 6 | 3-5/8 | 5-5/32 | 4-7/8 | 2 | 5-3/8 | 1-23/32 | 1.156 | 67.0 | 56.0 |
| 22 | 160R22H | R2 | 15.110 | 14.053 | 6 | 3-5/8 | 5-5/32 | 4-7/8 | 2 | 5-3/8 | 1-23/32 | 1.156 | 71.0 | 60.0 |
| 23 | 160R23H | R2 | 15.750 | 14.688 | 6 | 3-5/8 | 5-5/32 | 4-7/8 | 2 | 5-3/8 | 1-23/32 | 1.156 | 76.0 | 65.0 |
| 24 | 160R24H | R2 | 16.390 | 15.323 | 6 | 3-5/8 | 5-5/32 | 4-7/8 | 2 | 5-3/8 | 1-23/32 | 1.156 | 82.5 | 71.5 |
| 25 | 160R25H | R2 | 17.030 | 15.958 | 6 | 3-5/8 | 5-5/32 | 4-7/8 | 2 | 5-3/8 | 1-23/32 | 1.156 | 85.0 | 74.0 |
| 26 | 160R26H | R2 | 17.670 | 16.593 | 6 | 3-5/8 | 5-5/32 | 4-7/8 | 2 | 5-3/8 | 1-23/32 | 1.156 | 90.0 | 79.0 |
| 26 | 160S26H | S2 | 17.670 | 16.593 | 6 | 4-3/16 | 7-1/8 | 6-3/4 | 2-7/8 | 6-3/8 | 2-23/32 | 1.156 | 98.0 | 79.0 |
| 28 | 160R28H | R2 | 18.950 | 17.863 | 6 | 3-5/8 | 5-5/32 | 4-7/8 | 2 | 5-3/8 | 1-23/32 | 1.156 | 110.8 | 99.8 |
| 28 | 160S28H | S2 | 19.950 | 17.863 | 6 | 4-3/16 | 7-1/8 | 6-3/4 | 2-7/8 | 6-3/8 | 2-23/32 | 1.156 | 118.8 | 99.8 |
| 30 | 160R30H | R2 | 20.230 | 19.134 | 6 | 3-5/8 | 5-5/32 | 4-7/8 | 2 | 5-3/8 | 1-23/32 | 1.156 | 117.0 | 106.0 |
| 30 | 160S30H | S2 | 20.230 | 19.134 | 6 | 4-3/16 | 7-1/8 | 6-3/4 | 2-7/8 | 6-3/8 | 2-23/32 | 1.156 | 134.0 | 115.0 |
| 35 | 160S35 | S2 | 23.420 | 22.312 | 6 | 4-3/16 | 7-1/8 | 6-3/4 | 2-7/8 | 6-3/8 | 2-23/32 | 1.156 | 169.0 | 150.0 |
| 40 | 160S40 | S2 | 26.610 | 25.491 | 6 | 4-3/16 | 7-1/8 | 6-3/4 | 2-7/8 | 6-3/8 | 2-23/32 | 1.156 | 184.0 | 165.0 |
| 45 | 160S45 | S2 | 29.800 | 28.671 | 6 | 4-3/16 | 7-1/8 | 6-3/4 | 2-7/8 | 6-3/8 | 2-23/32 | 1.156 | 223.0 | 204.0 |
| 60 | 160U60 | U0 | 39.360 | 38.215 | 6 | 5-1/2 | 5 25/32 | 5-1/4 | 1-15/16 | 8-3/8 | 1-21/32 | 1.156 | 338.0 | 308.0 |
| 70 | 160U70 | U0 | 45.730 | 44.578 | 6 | 5-1/2 | 5 25/32 | 5-1/4 | 1-15/16 | 8-3/8 | 1-21/32 | 1.156 | 384.0 | 354.0 |
| 80 | 160S80 | S2 | 52.100 | 50.943 | 6 | 4-3/16 | 7-1/8 | 6-3/4 | 2-7/8 | 6-3/8 | 2-23/32 | 1.156 | 0 | 0 |
| 80 | 160U80 | U1 | 52.100 | 50.943 | 6 | 5-1/2 | 7-19/32 | 7-1/8 | 2-7/8 | 8-3/8 | 2 19/32 | 1.156 | 434.0 | 394.0 |

Sprockets with "H" suffix have hardened teeth.

No. 200 2 1/2" Pitch

MST Sprockets

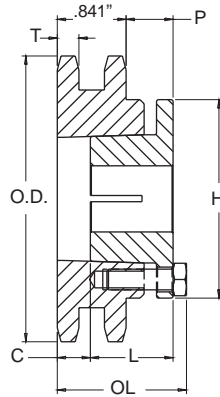


TYPE 6

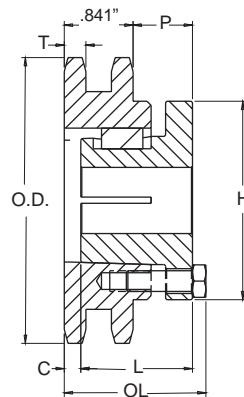
Single - MST Sprockets

| No. Teeth | Catalog Number | Bush-ing | Diameters | | Type | Max-Bore | Dimensions | | | | | | Weight (Approx.) | |
|-----------|----------------|----------|--------------|------------|------|----------|------------|--------|-------|-------|---------|--------|------------------|----------|
| | | | Outside Dia. | Pitch Dia. | | | OL | L | C | H | P | T(nom) | With Hub | Rim Only |
| 12 | 200R12 | R2 | 10.830 | 9.660 | 6 | 3-5/8 | 5-5/32 | 4-7/8 | 2 | 5-3/8 | 1-1/2 | 1.389 | 46.3 | 35.3 |
| 13 | 200S13 | S2 | 11.640 | 10.447 | 6 | 4-3/16 | 7-1/8 | 6-3/4 | 2-7/8 | 6-3/8 | 2-1/2 | 1.389 | 71.2 | 52.2 |
| 14 | 200S14 | S2 | 12.460 | 11.235 | 6 | 4-3/16 | 7-1/8 | 6-3/4 | 2-7/8 | 6-3/8 | 2-1/2 | 1.389 | 76.5 | 57.5 |
| 15 | 200S15 | S2 | 13.260 | 12.025 | 6 | 4-3/16 | 7-1/8 | 6-3/4 | 2-7/8 | 6-3/8 | 2-1/2 | 1.389 | 80.0 | 61. |
| 16 | 200S16 | S2 | 14.070 | 12.815 | 6 | 4-3/16 | 7-1/8 | 6-3/4 | 2-7/8 | 6-3/8 | 2-1/2 | 1.389 | 90.0 | 71.0 |
| 17 | 200S17 | S2 | 14.870 | 13.605 | 6 | 4-3/16 | 7-1/8 | 6-3/4 | 2-7/8 | 6-3/8 | 2-1/2 | 1.389 | 98.0 | 79.0 |
| 18 | 200U18 | U0 | 15.680 | 14.397 | 6 | 5-1/2 | 5-23/32 | 5-1/4 | 1 5/8 | 8-3/8 | 2-17/32 | 1.389 | 106.5 | 76.5 |
| 19 | 200U19 | U0 | 16.480 | 15.190 | 6 | 5-1/2 | 5-23/32 | 5-1/4 | 1 5/8 | 8-3/8 | 2-17/32 | 1.389 | 113.7 | 83.7 |
| 20 | 200U20 | U0 | 17.290 | 15.982 | 6 | 5-1/2 | 5-23/32 | 5-1/4 | 1 5/8 | 8-3/8 | 2-17/32 | 1.389 | 121.3 | 91.3 |
| 21x | 200U21 | U0 | 18.090 | 16.775 | 6 | 5-1/2 | 5-23/32 | 5-1/4 | 1 5/8 | 8-3/8 | 2-17/32 | 1.389 | 129.4 | 99.4 |
| 22 | 200U22 | U0 | 18.890 | 17.567 | 6 | 5-1/2 | 5-23/32 | 5-1/4 | 1 5/8 | 8-3/8 | 2-17/32 | 1.389 | 140.0 | 110.0 |
| 23 | 200U23 | U0 | 19.690 | 18.360 | 6 | 5-1/2 | 5-23/32 | 5-1/4 | 1 5/8 | 8-3/8 | 2-17/32 | 1.389 | 147.0 | 117.0 |
| 24 | 200U24 | U0 | 20.490 | 19.152 | 6 | 5-1/2 | 5-23/32 | 5-1/4 | 1 5/8 | 8-3/8 | 2-17/32 | 1.389 | 156.0 | 126.0 |
| 25 | 200U25 | U0 | 21.290 | 19.947 | 6 | 5-1/2 | 5-23/32 | 5-1/4 | 1 5/8 | 8-3/8 | 2-17/32 | 1.389 | 170.0 | 140.0 |
| 26 | 200U26 | U0 | 22.090 | 20.740 | 6 | 5-1/2 | 5-23/32 | 5-1/4 | 1 5/8 | 8-3/8 | 2-17/32 | 1.389 | 180.0 | 150.0 |
| 28 | 200U28 | U0 | 23.690 | 22.330 | 6 | 5-1/2 | 5-23/32 | 5-1/4 | 1 5/8 | 8-3/8 | 2-17/32 | 1.389 | 199.0 | 169.0 |
| 30 | 200U30 | U0 | 25.290 | 23.917 | 6 | 5-1/2 | 5-23/32 | 5-1/4 | 1 5/8 | 8-3/8 | 2-17/32 | 1.389 | 218.0 | 188.0 |
| 32 | 200U32 | U0 | 26.880 | 25.505 | 6 | 5-1/2 | 5-23/32 | 5-1/4 | 1 5/8 | 8-3/8 | 2-17/32 | 1.389 | 242.0 | 212.0 |
| 35 | 200U35 | U1 | 29.280 | 27.890 | 6 | 5-1/2 | 7-19/32 | 7-1/8 | 2-7/8 | 8-3/8 | 2-7/8 | 1.389 | 292.0 | 252.0 |
| 40 | 200U40 | U1 | 33.270 | 31.865 | 6 | 5-1/2 | 7-19/32 | 7-1/8 | 2-7/8 | 8-3/8 | 2-7/8 | 1.389 | 346.0 | 306.0 |
| 45 | 200U45 | U1 | 37.250 | 35.840 | 6 | 5-1/2 | 7-19/32 | 7-1/8 | 2-7/8 | 8-3/8 | 2-7/8 | 1.389 | 330.0 | 290.0 |
| 54 | 200U54 | U2 | 44.420 | 42.995 | 6 | 5 | 10-19/32 | 10-1/8 | 4-1/4 | 8-3/8 | 3-29/32 | 1.389 | 435.0 | 385.0 |
| 60 | 200U60 | U2 | 49.200 | 47.767 | 6 | 5 | 10-19/32 | 10-1/8 | 4-1/4 | 8-3/8 | 3-29/32 | 1.389 | 495.0 | 445.0 |

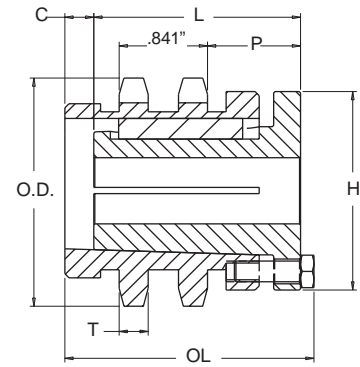
Sprockets with "H" suffix have hardened teeth.



TYPE 11



TYPE 12



TYPE 16

Double - MST Sprockets

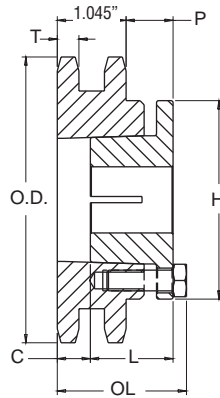
| No. Teeth | Catalog Number | Bush-ing | Diameters | | Type | Max. Bore | Dimensions | | | | | | Weight (Approx.) | |
|-----------|----------------|----------|--------------|------------|------|-----------|------------|---------|-------|-------|---------|--------|------------------|----------|
| | | | Outside Dia. | Pitch Dia. | | | OL | L | C | H | P | T(nom) | With Hub | Rim Only |
| 15 | D40H15H | H | 2.650 | 2.405 | 11 | 1-1/2 | 2-5/32 | 1-1/4 | 23/32 | 2-1/2 | 1-1/8 | .275 | 1.7 | .9 |
| 16 | D40H16H | H | 2.810 | 2.563 | 11 | 1-1/2 | 2-5/32 | 1-1/4 | 23/32 | 2-1/2 | 1-1/8 | .275 | 1.8 | 1.0 |
| 17 | D40H17H | H | 2.980 | 2.721 | 11 | 1-1/2 | 2-5/32 | 1-1/4 | 23/32 | 2-1/2 | 1-1/8 | .275 | 1.9 | 1.1 |
| 18 | D40P18H | P1 | 3.140 | 2.879 | 16 | 1-3/4 | 3 3/16 | 1-15/16 | 1 | 3 | 1-3/8 | .275 | 3.1 | 1.8 |
| 19 | D40P19H | P1 | 3.300 | 3.038 | 12 | 1-3/4 | 2 15/32 | 1-15/16 | 9/32 | 3 | 1-3/8 | .275 | 2.7 | 1.4 |
| 20 | D40P20H | P1 | 3.460 | 3.196 | 12 | 1-3/4 | 2-13/32 | 1-15/16 | 7/32 | 3 | 1-3/8 | .275 | 2.9 | 1.6 |
| 21 | D40P21H | P1 | 3.620 | 3.355 | 12 | 1-3/4 | 2-13/32 | 1-15/16 | 7/32 | 3 | 1-3/8 | .275 | 3.1 | 1.8 |
| 22 | D40P22H | P1 | 3.780 | 3.513 | 12 | 1-3/4 | 2-13/32 | 1-15/16 | 7/32 | 3 | 1-3/8 | .275 | 3.3 | 2.0 |
| 23 | D40P23H | P1 | 3.940 | 3.672 | 12 | 1-3/4 | 2-3/16 | 1-15/16 | 0 | 3 | 1-3/32 | .275 | 3.3 | 2.0 |
| 24 | D40P24H | P1 | 4.100 | 3.831 | 12 | 1-3/4 | 2-3/16 | 1-15/16 | 0 | 3 | 1-3/32 | .275 | 3.5 | 2.2 |
| 25 | D40P25H | P1 | 4.260 | 3.989 | 12 | 1-3/4 | 2-3/16 | 1-15/16 | 0 | 3 | 1-3/32 | .275 | 3.8 | 2.5 |
| 26 | D40P26H | P1 | 4.420 | 4.148 | 12 | 1-3/4 | 2-3/16 | 1-15/16 | 0 | 3 | 1-3/32 | .275 | 4.0 | 2.7 |
| 28 | D40P28H | P1 | 4.740 | 4.466 | 12 | 1-3/4 | 2-3/16 | 1-15/16 | 0 | 3 | 1-3/32 | .275 | 4.4 | 3.1 |
| 30 | D40Q30H | Q1 | 5.060 | 4.783 | 12 | 2-11/16 | 2-25/32 | 2-1/2 | 0 | 4-1/8 | 1-21/32 | .275 | 7.7 | 4.2 |
| 32 | D40Q32H | Q1 | 5.380 | 5.101 | 12 | 2-11/16 | 2-25/32 | 2-1/2 | 0 | 4-1/8 | 1-21/32 | .275 | 8.8 | 5.3 |
| 35 | D40Q35H | Q1 | 5.860 | 5.578 | 12 | 2-11/16 | 2-25/32 | 2-1/2 | 0 | 4-1/8 | 1-21/32 | .275 | 9.6 | 6.1 |
| 36 | D40Q36H | Q1 | 6.020 | 5.737 | 12 | 2-11/16 | 2-25/32 | 2-1/2 | 0 | 4-1/8 | 1-21/32 | .275 | 10.0 | 6.5 |
| 40 | D40Q40H | Q1 | 6.650 | 6.373 | 12 | 2-11/16 | 2-25/32 | 2-1/2 | 0 | 4-1/8 | 1-21/32 | .275 | 11.4 | 7.9 |
| 42 | D40Q42H | Q1 | 6.970 | 6.691 | 12 | 2-11/16 | 2-25/32 | 2-1/2 | 0 | 4-1/8 | 1-21/32 | .275 | 12.4 | 8.9 |
| 45 | D40Q45H | Q1 | 7.450 | 7.168 | 12 | 2-11/16 | 2-25/32 | 2-1/2 | 0 | 4-1/8 | 1-21/32 | .275 | 13.6 | 10.1 |
| 48 | D40Q48H | Q1 | 7.930 | 7.645 | 12 | 2-11/16 | 2-25/32 | 2-1/2 | 0 | 4-1/8 | 1-21/32 | .275 | 15.3 | 11.8 |
| 52 | D40Q52H | Q1 | 8.570 | 8.281 | 12 | 2-11/16 | 2-25/32 | 2-1/2 | 0 | 4-1/8 | 1-21/32 | .275 | 16.1 | 12.6 |
| 54 | D40Q54H | Q1 | 8.890 | 8.599 | 12 | 2-11/16 | 2-25/32 | 2-1/2 | 0 | 4-1/8 | 1-21/32 | .275 | 17.8 | 14.3 |
| 60 | D40Q60H | Q1 | 9.840 | 9.554 | 12 | 2-11/16 | 2-25/32 | 2-1/2 | 0 | 4-1/8 | 1-21/32 | .275 | 20.9 | 17.4 |
| 68 | D40Q68 | Q1 | 11.120 | 10.826 | 12 | 2-11/16 | 2-25/32 | 2-1/2 | 0 | 4-1/8 | 1-21/32 | .275 | 25.0 | 21.5 |
| 72 | D40Q72 | Q1 | 11.750 | 11.463 | 12 | 2-11/16 | 2-25/32 | 2-1/2 | 0 | 4-1/8 | 1-21/32 | .275 | 28.5 | 25.0 |
| 76 | D40Q76 | Q1 | 12.390 | 12.099 | 12 | 2-11/16 | 2-25/32 | 2-1/2 | 0 | 4-1/8 | 1-21/32 | .275 | 30.4 | 26.9 |
| 84 | D40Q84 | Q1 | 13.660 | 13.372 | 12 | 2-11/16 | 2-25/32 | 2-1/2 | 0 | 4-1/8 | 1-21/32 | .275 | 37.6 | 34.1 |
| 95 | D40Q95 | Q1 | 15.410 | 15.122 | 12 | 2-11/16 | 2-25/32 | 2-1/2 | 0 | 4-1/8 | 1-21/32 | .275 | 45.5 | 42.0 |
| 96 | D40Q96 | Q1 | 15.570 | 15.281 | 12 | 2-11/16 | 2-25/32 | 2-1/2 | 0 | 4-1/8 | 1-21/32 | .275 | 47.6 | 44.1 |
| 102 | D40Q102 | Q1 | 16.530 | 16.236 | 12 | 2-11/16 | 2-25/32 | 2-1/2 | 0 | 4-1/8 | 1-21/32 | .275 | 52.0 | 48.5 |
| 112 | D40Q112 | Q1 | 18.120 | 17.828 | 12 | 2-11/16 | 2-25/32 | 2-1/2 | 0 | 4-1/8 | 1-21/32 | .275 | 64.5 | 61.0 |

Sprockets with "H" suffix have hardened teeth.

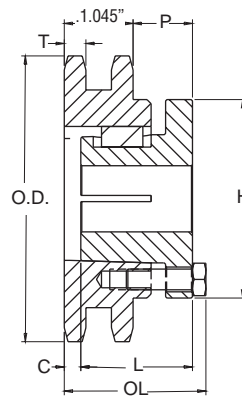
No. 50-2

5/8" Pitch

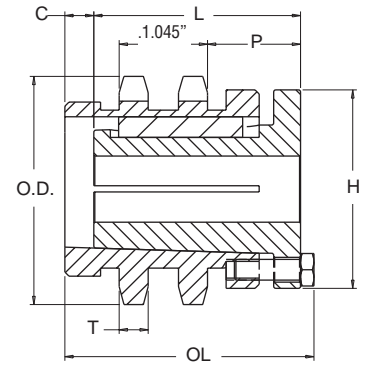
MST Sprockets



TYPE 11



TYPE 12

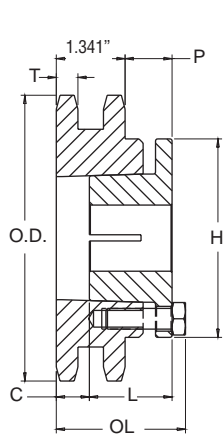


TYPE 16

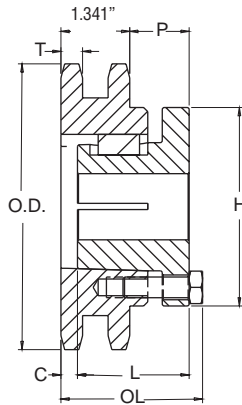
Double - MST Sprockets

| No. Teeth | Catalog Number | Bush-ing | Diameters | | Type | Max. Bore | Dimensions | | | | | | Weight (Approx.) | |
|-----------|----------------|----------|--------------|------------|------|-----------|------------|---------|-------|-------|---------|--------|------------------|----------|
| | | | Outside Dia. | Pitch Dia. | | | OL | L | C | H | P | T(nom) | With Hub | Rim Only |
| 14 | D50H14H | H | 3.110 | 2.809 | 11 | 1-1/2 | 2 5/16 | 1-1/4 | 7/8 | 2-1/2 | 1-3/32 | .332 | 2.0 | 1.2 |
| 15 | D50P15H | P1 | 3.320 | 3.006 | 16 | 1-3/4 | 3 7/16 | 1-15/16 | 1-1/4 | 3 | 1-13/32 | .332 | 3.3 | 2.0 |
| 16 | D50P16H | P1 | 3.520 | 3.204 | 12 | 1-3/4 | 2-11/16 | 1-15/16 | 1/2 | 3 | 1-13/32 | .332 | 2.9 | 1.6 |
| 17 | D50P17H | P1 | 3.720 | 3.401 | 12 | 1-3/4 | 2-11/16 | 1-15/16 | 1/2 | 3 | 1-13/32 | .332 | 3.4 | 2.1 |
| 18 | D50P18H | P1 | 3.920 | 3.599 | 12 | 1-3/4 | 2-11/16 | 1-15/16 | 1/2 | 3 | 1-13/32 | .332 | 3.8 | 2.5 |
| 19 | D50P19H | P1 | 4.120 | 3.797 | 12 | 1-3/4 | 2-3/16 | 1-15/16 | 0 | 3 | 29/32 | .332 | 3.3 | 2.0 |
| 20 | D50P20H | P1 | 4.320 | 3.995 | 12 | 1-3/4 | 2-3/16 | 1-15/16 | 0 | 3 | 29/32 | .332 | 3.8 | 2.5 |
| 21 | D50P21H | P1 | 4.520 | 4.194 | 12 | 1-3/4 | 2-3/16 | 1-15/16 | 0 | 3 | 29/32 | .332 | 4.1 | 2.8 |
| 22 | D50P22H | P1 | 4.720 | 4.392 | 12 | 1-3/4 | 2-3/16 | 1-15/16 | 0 | 3 | 29/32 | .332 | 4.5 | 3.2 |
| 23 | D50P23H | P1 | 4.920 | 4.590 | 12 | 1-3/4 | 2-3/16 | 1-15/16 | 0 | 3 | 29/32 | .332 | 4.9 | 3.6 |
| 24 | D50Q24H | Q1 | 5.120 | 4.788 | 12 | 2-11/16 | 2-25/32 | 2-1/2 | 0 | 4-1/8 | 1-15/32 | .332 | 7.5 | 4.0 |
| 25 | D50Q25H | Q1 | 5.320 | 4.987 | 12 | 2-11/16 | 2-25/32 | 2-1/2 | 0 | 4-1/8 | 1-15/32 | .332 | 8.0 | 4.5 |
| 26 | D50Q26H | Q1 | 5.520 | 5.185 | 12 | 2-11/16 | 2-25/32 | 2-1/2 | 0 | 4-1/8 | 1-15/32 | .332 | 8.8 | 5.3 |
| 27 | D50Q27H | Q1 | 5.720 | 5.384 | 12 | 2-11/16 | 2-25/32 | 2-1/2 | 0 | 4-1/8 | 1-15/32 | .332 | 9.4 | 5.9 |
| 28 | D50Q28H | Q1 | 5.920 | 5.582 | 12 | 2-11/16 | 2-25/32 | 2-1/2 | 0 | 4-1/8 | 1-15/32 | .332 | 9.8 | 6.3 |
| 30 | D50Q30H | Q1 | 6.320 | 5.979 | 12 | 2-11/16 | 2-25/32 | 2-1/2 | 0 | 4-1/8 | 1-15/32 | .332 | 11.0 | 7.5 |
| 32 | D50Q32H | Q1 | 6.720 | 6.376 | 12 | 2-11/16 | 2-25/32 | 2-1/2 | 0 | 4-1/8 | 1-15/32 | .332 | 12.0 | 8.5 |
| 35 | D50Q35H | Q1 | 7.320 | 6.972 | 12 | 2-11/16 | 2-25/32 | 2-1/2 | 0 | 4-1/8 | 1-15/32 | .332 | 13.9 | 10.4 |
| 36 | D50Q36H | Q1 | 7.520 | 7.171 | 12 | 2-11/16 | 2-25/32 | 2-1/2 | 0 | 4-1/8 | 1-15/32 | .332 | 14.5 | 11.0 |
| 40 | D50Q40H | Q1 | 8.320 | 7.966 | 12 | 2-11/16 | 2-25/32 | 2-1/2 | 0 | 4-1/8 | 1-15/32 | .332 | 17.1 | 13.6 |
| 42 | D50Q42H | Q1 | 8.720 | 8.363 | 12 | 2-11/16 | 2-25/32 | 2-1/2 | 0 | 4-1/8 | 1-15/32 | .332 | 18.5 | 15.0 |
| 45 | D50Q45H | Q1 | 9.310 | 8.960 | 12 | 2-11/16 | 2-25/32 | 2-1/2 | 0 | 4-1/8 | 1-15/32 | .332 | 21.0 | 17.5 |
| 48 | D50Q48H | Q1 | 9.910 | 9.556 | 12 | 2-11/16 | 2-25/32 | 2-1/2 | 0 | 4-1/8 | 1-15/32 | .332 | 23.9 | 20.4 |
| 52 | D50Q52 | Q1 | 10.710 | 10.351 | 12 | 2-11/16 | 2-25/32 | 2-1/2 | 0 | 4-1/8 | 1-15/32 | .332 | 26.8 | 23.3 |
| 54 | D50Q54 | Q1 | 11.110 | 10.749 | 12 | 2-11/16 | 2-25/32 | 2-1/2 | 0 | 4-1/8 | 1-15/32 | .332 | 26.8 | 23.3 |
| 60 | D50Q60 | Q1 | 12.300 | 11.942 | 12 | 2-11/16 | 2-25/32 | 2-1/2 | 0 | 4-1/8 | 1-15/32 | .332 | 29.0 | 25.5 |
| 72 | D50Q72 | Q1 | 14.690 | 14.329 | 12 | 2-11/16 | 2-25/32 | 2-1/2 | 0 | 4-1/8 | 1-15/32 | .332 | 46.6 | 43.1 |
| 76 | D50Q76 | Q1 | 15.490 | 15.124 | 12 | 2-11/16 | 2-25/32 | 2-1/2 | 0 | 4-1/8 | 1-15/32 | .332 | 49.5 | 46.0 |
| 84 | D50Q84 | Q1 | 17.080 | 16.715 | 12 | 2-11/16 | 2-25/32 | 2-1/2 | 0 | 4-1/8 | 1-15/32 | .332 | 60.2 | 56.7 |
| 95 | D50R95 | R1 | 19.270 | 18.903 | 12 | 3-3/4 | 3-5/32 | 2-7/8 | 0 | 5-3/8 | 2-3/32 | .332 | 79.8 | 72.3 |
| 96 | D50R96 | R1 | 19.470 | 19.102 | 12 | 3-3/4 | 3-5/32 | 2-7/8 | 0 | 5-3/8 | 2-3/32 | .332 | 88.2 | 80.7 |
| 102 | D50R102 | R1 | 20.660 | 20.295 | 12 | 3-3/4 | 3-5/32 | 2-7/8 | 0 | 5-3/8 | 2-3/32 | .332 | 92.0 | 84.5 |
| 112 | D50R112 | R1 | 22.650 | 22.285 | 12 | 3-3/4 | 3-5/32 | 2-7/8 | 0 | 5-3/8 | 2-3/32 | .332 | 100.7 | 93.2 |

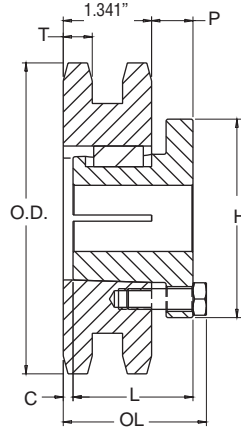
Sprockets with "H" suffix have hardened teeth.



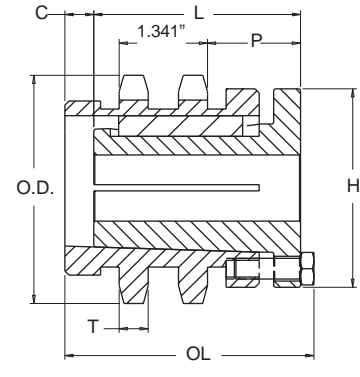
TYPE 11



TYPE 12



TYPE 13



TYPE 16

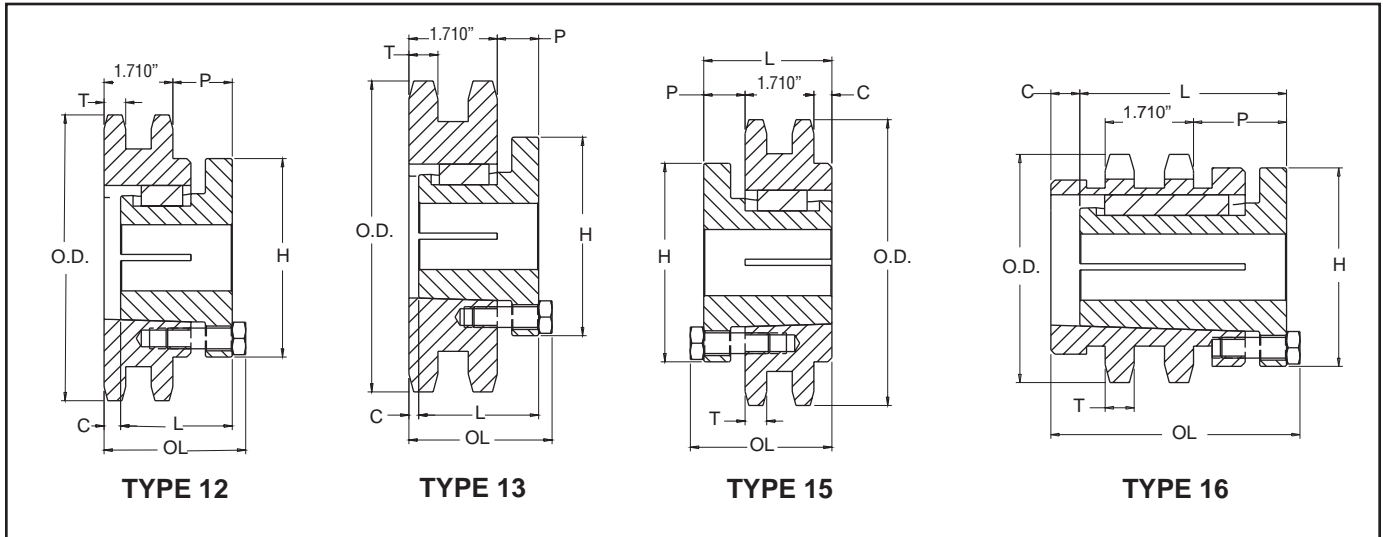
Double - MST Sprockets

| No. Teeth | Catalog Number | Bush-ing | Diameters | | Type | Max. Bore | Dimensions | | | | | Weight (Approx.) | | |
|-----------|----------------|----------|--------------|------------|------|-----------|------------|---------|-------|-------|---------|------------------|----------|----------|
| | | | Outside Dia. | Pitch Dia. | | | OL | L | C | H | P | T(nom) | With Hub | Rim Only |
| 13 | D60P13H | P1 | 3.490 | 3.134 | 16 | 1-3/4 | 3-13/16 | 1-15/16 | 1 5/8 | 3 | 1-13/32 | .444 | 3.8 | 2.5 |
| 14 | D60P14H | P1 | 3.740 | 3.371 | 12 | 1-3/4 | 3 | 1-15/16 | 13/16 | 3 | 1-13/32 | .444 | 3.6 | 2.3 |
| 15 | D60P15H | P1 | 3.980 | 3.607 | 12 | 1-3/4 | 3 | 1-15/16 | 13/16 | 3 | 1-13/32 | .444 | 4.0 | 2.7 |
| 16 | D60P16H | P1 | 4.220 | 3.844 | 13 | 1-3/4 | 2-7/32 | 1-15/16 | 1/32 | 3 | 5/8 | .444 | 3.7 | 2.4 |
| 17 | D60P17H | P1 | 4.460 | 4.082 | 13 | 1-3/4 | 2-7/32 | 1-15/16 | 1/32 | 3 | 5/8 | .444 | 4.1 | 2.8 |
| 18 | D60P18H | P1 | 4.700 | 4.319 | 13 | 1-3/4 | 2-7/32 | 1-15/16 | 1/32 | 3 | 5/8 | .444 | 4.7 | 3.4 |
| 19 | D60P19H | P1 | 4.950 | 4.557 | 13 | 1-3/4 | 2-7/32 | 1-15/16 | 1/32 | 3 | 5/8 | .444 | 5.3 | 4.0 |
| 20 | D60P20H | P1 | 5.190 | 4.794 | 13 | 1-3/4 | 2-7/32 | 1-15/16 | 1/32 | 3 | 5/8 | .444 | 6.0 | 4.7 |
| 21 | D60Q21H | Q1 | 5.430 | 5.032 | 12 | 2-11/16 | 2-25/32 | 2-1/2 | 0 | 4-1/8 | 1-5/32 | .444 | 8.3 | 4.8 |
| 22 | D60Q22H | Q1 | 5.670 | 5.270 | 12 | 2-11/16 | 2-25/32 | 2-1/2 | 0 | 4-1/8 | 1-5/32 | .444 | 9.1 | 5.6 |
| 23 | D60Q23H | Q1 | 5.910 | 5.508 | 12 | 2-11/16 | 2-25/32 | 2-1/2 | 0 | 4-1/8 | 1-5/32 | .444 | 9.8 | 6.3 |
| 24 | D60Q24H | Q1 | 6.150 | 5.746 | 12 | 2-11/16 | 2-25/32 | 2-1/2 | 0 | 4-1/8 | 1-5/32 | .444 | 10.5 | 7.0 |
| 25 | D60Q25H | Q1 | 6.390 | 5.984 | 12 | 2-11/16 | 2-25/32 | 2-1/2 | 0 | 4-1/8 | 1-5/32 | .444 | 11.4 | 7.9 |
| 26 | D60Q26H | Q1 | 6.630 | 6.222 | 12 | 2-11/16 | 2-25/32 | 2-1/2 | 0 | 4-1/8 | 1-5/32 | .444 | 12.3 | 8.8 |
| 27 | D60Q27H | Q1 | 6.870 | 6.460 | 12 | 2-11/16 | 2-25/32 | 2-1/2 | 0 | 4-1/8 | 1-5/32 | .444 | 13.1 | 9.6 |
| 28 | D60Q28H | Q1 | 7.110 | 6.699 | 12 | 2-11/16 | 2-25/32 | 2-1/2 | 0 | 4-1/8 | 1-5/32 | .444 | 14.0 | 10.5 |
| 30 | D60Q30H | Q1 | 7.590 | 7.175 | 12 | 2-11/16 | 2-25/32 | 2-1/2 | 0 | 4-1/8 | 1-5/32 | .444 | 15.8 | 12.3 |
| 32 | D60Q32H | Q1 | 8.070 | 7.652 | 12 | 2-11/16 | 2-25/32 | 2-1/2 | 0 | 4-1/8 | 1-5/32 | .444 | 17.8 | 14.3 |
| 35 | D60Q35H | Q1 | 8.780 | 8.367 | 12 | 2-11/16 | 2-25/32 | 2-1/2 | 0 | 4-1/8 | 1-5/32 | .444 | 21.2 | 17.7 |
| 36 | D60Q36H | Q1 | 9.020 | 8.605 | 12 | 2-11/16 | 2-25/32 | 2-1/2 | 0 | 4-1/8 | 1-5/32 | .444 | 21.9 | 18.4 |
| 40 | D60Q40H | Q1 | 9.980 | 9.559 | 12 | 2-11/16 | 2-25/32 | 2-1/2 | 0 | 4-1/8 | 1-5/32 | .444 | 27.4 | 23.9 |
| 42 | D60Q42 | Q1 | 10.460 | 10.036 | 12 | 2-11/16 | 2-25/32 | 2-1/2 | 0 | 4-1/8 | 1-5/32 | .444 | 29.8 | 26.3 |
| 42 | D60R42 | R1 | 10.460 | 10.036 | 12 | 3-3/4 | 3-5/32 | 2-7/8 | 0 | 5-3/8 | 1 17/32 | .444 | 33.2 | 25.7 |
| 45 | D60R45 | R1 | 11.180 | 10.752 | 12 | 3-3/4 | 3-5/32 | 2-7/8 | 0 | 5-3/8 | 1 17/32 | .444 | 37.7 | 30.2 |
| 48 | D60R48 | R1 | 11.890 | 11.467 | 12 | 3-3/4 | 3-5/32 | 2-7/8 | 0 | 5-3/8 | 1 17/32 | .444 | 42.6 | 35.1 |
| 52 | D60R52 | R1 | 12.850 | 12.422 | 12 | 3-3/4 | 3-5/32 | 2-7/8 | 0 | 5-3/8 | 1 17/32 | .444 | 49.3 | 41.8 |
| 54 | D60R54 | R1 | 13.330 | 12.899 | 12 | 3-3/4 | 3-5/32 | 2-7/8 | 0 | 5-3/8 | 1 17/32 | .444 | 52.6 | 45.1 |
| 60 | D60R60 | R1 | 14.760 | 14.331 | 12 | 3-3/4 | 3-5/32 | 2-7/8 | 0 | 5-3/8 | 1 17/32 | .444 | 62.3 | 54.8 |
| 6"8 | D60R68 | R1 | 16.670 | 16.240 | 12 | 3-3/4 | 3-5/32 | 2-7/8 | 0 | 5-3/8 | 1 17/32 | .444 | 81.3 | 73.8 |
| 72 | D60R72 | R1 | 17.630 | 17.194 | 12 | 3-3/4 | 3-5/32 | 2-7/8 | 0 | 5-3/8 | 1 17/32 | .444 | 89.3 | 81.8 |
| 76 | D60R76 | R1 | 18.580 | 18.149 | 12 | 3-3/4 | 3-5/32 | 2-7/8 | 0 | 5-3/8 | 1 17/32 | .444 | 100.5 | 93.0 |
| 84 | D60R84 | R1 | 20.490 | 20.058 | 12 | 3-3/4 | 3-5/32 | 2-7/8 | 0 | 5-3/8 | 1 17/32 | .444 | 118.5 | 111.0 |
| 95 | D60R95 | R1 | 23.120 | 22.683 | 12 | 3-3/4 | 3-5/32 | 2-7/8 | 0 | 5-3/8 | 1 17/32 | .444 | 155.5 | 148.0 |
| 96 | D60R96 | R1 | 23.360 | 22.922 | 12 | 3-3/4 | 3-5/32 | 2-7/8 | 0 | 5-3/8 | 1 17/32 | .444 | 162.5 | 155.0 |

Sprockets with "H" suffix have hardened teeth.

No. 80-2 1" Pitch

MST Sprockets



Double- MST Sprockets

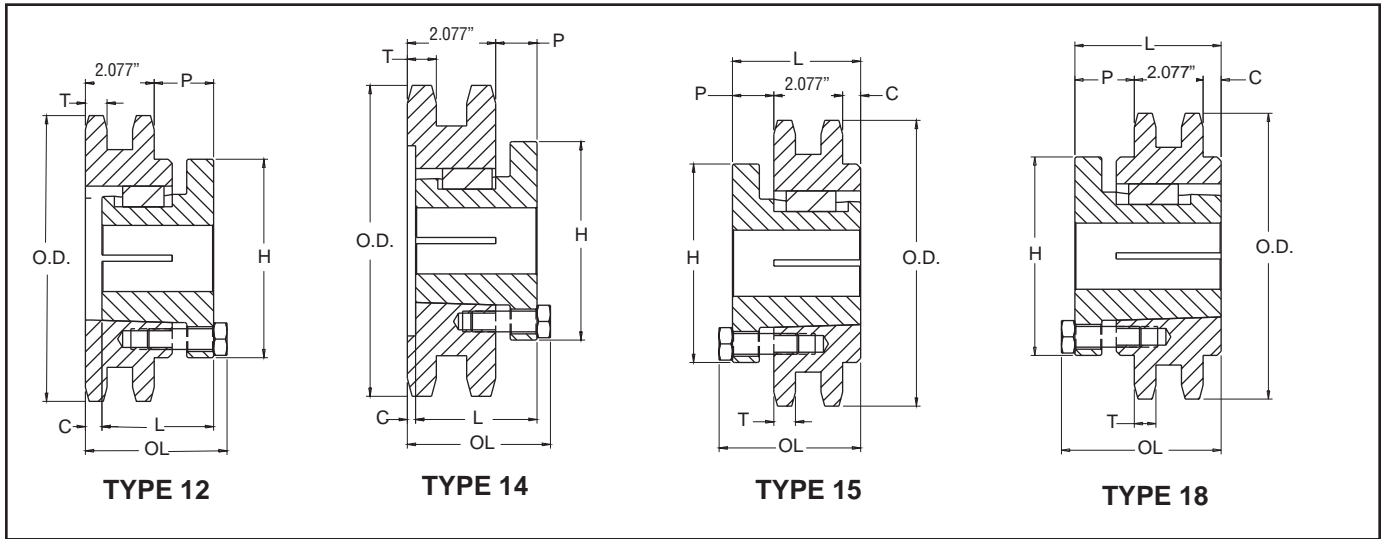
| No. Teeth | Catalog Number | Bush-ing | Diameters | | Type | Max. Bore | Dimensions | | | | | | Weight (Approx.) | |
|-----------|----------------|----------|--------------|------------|------|-----------|------------|---------|--------|-------|--------|--------|------------------|----------|
| | | | Outside Dia. | Pitch Dia. | | | OL | L | C | H | P | T(nom) | With Hub | Rim Only |
| 13 | D80P13H | P1 | 4.660 | 4.179 | 13 | 1-3/4 | 2-19/32 | 1-15/16 | 13/32 | 3 | 5/8 | .557 | 4.9 | 3.6 |
| 14 | D80Q14H | Q2 | 4.980 | 4.494 | 16 | 2-5/8 | 4 5/8 | 3-1/2 | 27/32 | 4-1/8 | 1-3/4 | .557 | 9.9 | 5.4 |
| 15 | D80Q15H | Q2 | 5.300 | 4.810 | 12 | 2-5/8 | 3-25/32 | 3-1/2 | 0 | 4-1/8 | 13/4 | .557 | 9.9 | 5.4 |
| 16 | D80Q16H | Q1 | 5.630 | 5.126 | 13 | 2-11/16 | 2-25/32 | 2-1/2 | 0 | 4-1/8 | 3/4 | .557 | 8.3 | 4.8 |
| 17 | D80Q17H | Q1 | 5.950 | 5.442 | 13 | 2-11/16 | 2-25/32 | 2-1/2 | 0 | 4-1/8 | 3/4 | .557 | 9.5 | 6.0 |
| 18 | D80Q18H | Q1 | 6.270 | 5.759 | 13 | 2-11/16 | 2-25/32 | 2-1/2 | 0 | 4-1/8 | 3/4 | .557 | 10.8 | 7.3 |
| 19 | D80Q19H | Q1 | 6.590 | 6.076 | 13 | 2-11/16 | 2-25/32 | 2-1/2 | 0 | 4-1/8 | 3/4 | .557 | 12.0 | 8.5 |
| 20 | D80R20H | R1 | 6.910 | 6.392 | 12 | 3-3/4 | 3-5/32 | 2-7/8 | 0 | 5-3/8 | 1-5/32 | .557 | 15.3 | 7.8 |
| 21 | D80R21H | R1 | 7.240 | 6.710 | 12 | 3-3/4 | 3-5/32 | 2-7/8 | 0 | 5-3/8 | 1-5/32 | .557 | 16.9 | 9.4 |
| 22 | D80R22H | R1 | 7.560 | 7.027 | 12 | 3-3/4 | 3-5/32 | 2-7/8 | 0 | 5-3/8 | 1-5/32 | .557 | 18.3 | 10.8 |
| 23 | D80R23H | R1 | 7.880 | 7.344 | 12 | 3-3/4 | 3-5/32 | 2-7/8 | 0 | 5-3/8 | 1-5/32 | .557 | 19.8 | 12.3 |
| 24 | D80R24H | R1 | 8.200 | 7.661 | 12 | 3-3/4 | 3-5/32 | 2-7/8 | 0 | 5-3/8 | 1-5/32 | .557 | 21.6 | 14.1 |
| 25 | D80R25H | R1 | 8.520 | 7.979 | 12 | 3-3/4 | 3-5/32 | 2-7/8 | 0 | 5-3/8 | 1-5/32 | .557 | 23.3 | 15.8 |
| 26 | D80R26 | R1 | 8.840 | 8.296 | 12 | 3-3/4 | 3-5/32 | 2-7/8 | 0 | 5-3/8 | 1-5/32 | .557 | 25.6 | 18.1 |
| 27 | D80R27 | R1 | 9.160 | 8.614 | 12 | 3-3/4 | 3-5/32 | 2-7/8 | 0 | 5-3/8 | 1-5/32 | .557 | 27.9 | 20.4 |
| 28 | D80R28 | R1 | 9.480 | 8.931 | 12 | 3-3/4 | 3-5/32 | 2-7/8 | 0 | 5-3/8 | 1-5/32 | .557 | 30.2 | 22.7 |
| 30 | D80R30 | R1 | 10.110 | 9.567 | 12 | 3-3/4 | 3-5/32 | 2-7/8 | 0 | 5-3/8 | 1-5/32 | .557 | 34.3 | 26.8 |
| 36 | D80R36 | R1 | 12.030 | 11.474 | 12 | 3-3/4 | 3-5/32 | 2-7/8 | 0 | 5-3/8 | 1-5/32 | .557 | 49.1 | 41.6 |
| 42 | D80R42 | R1 | 13.940 | 13.382 | 12 | 3-3/4 | 3-5/32 | 2-7/8 | 0 | 5-3/8 | 1-5/32 | .557 | 65.5 | 58.0 |
| 45 | D80R45 | R1 | 14.900 | 14.336 | 12 | 3-3/4 | 3-5/32 | 2-7/8 | 0 | 5-3/8 | 1-5/32 | .557 | 75.5 | 68.0 |
| 48 | D80R48 | R2 | 15.860 | 15.290 | 15 | 3-5/8 | 5-5/32 | 4-7/8 | 2-9/32 | 5-3/8 | 7/8 | .557 | 97.0 | 86.0 |
| 52 | D80R52 | R2 | 17.130 | 16.562 | 15 | 3-5/8 | 5-5/32 | 4-7/8 | 2-9/32 | 5-3/8 | 7/8 | .557 | 114.0 | 103.0 |
| 54 | D80R54 | R2 | 17.770 | 17.198 | 15 | 3-5/8 | 5-5/32 | 4-7/8 | 2-9/32 | 5-3/8 | 7/8 | .557 | 122.0 | 111.0 |
| 60 | D80R60 | R2 | 19.680 | 19.107 | 15 | 3-5/8 | 5-5/32 | 4-7/8 | 2-9/32 | 5-3/8 | 7/8 | .557 | 146.0 | 135.0 |
| 68 | D80R68 | R2 | 22.230 | 21.653 | 15 | 3-5/8 | 5-5/32 | 4-7/8 | 2-9/32 | 5-3/8 | 7/8 | .557 | 187.0 | 176.0 |
| 72 | D80R72 | R2 | 23.500 | 22.926 | 15 | 3-5/8 | 5-5/32 | 4-7/8 | 2-9/32 | 5-3/8 | 7/8 | .557 | 209.0 | 198.0 |
| 76 | D80U76 | U0 | 24.780 | 24.198 | 15 | 5-1/2 | 5-23/32 | 5-1/4 | 2-1/32 | 8-3/8 | 1-1/2 | .557 | 249.0 | 219.0 |
| 95 | D80U95 | U0 | 30.830 | 30.245 | 15 | 5 1/2 | 5-23/32 | 5-1/4 | 2-1/32 | 8-3/8 | 1-1/2 | .557 | 372.0 | 342.0 |

Sprockets with "H" suffix have hardened teeth.

Martin

MST Sprockets

No. **100-2** 1-3/4" Pitch
 No. **120-2** 1-1/2" Pitch



Double - MST Sprockets

No. 100 1-3/4" Pitch

| No. Teeth | Catalog Number | Bush-ing | Diameters | | Type | Max. Bore | Dimensions | | | | | | Weight (Approx.) | |
|-----------|----------------|----------|--------------|------------|------|-----------|------------|---------|---------|-------|---------|--------|------------------|----------|
| | | | Outside Dia. | Pitch Dia. | | | OL | L | C | H | P | T(nom) | With Hub | Rim Only |
| 11 | D100P11H | P1 | 5.010 | 4.437 | 14 | 1-3/4 | 2-15/16 | 1-15/16 | 3/4 | 3 | 5/8 | .669 | 6.0 | 4.7 |
| 12 | D100Q12H | Q2 | 5.420 | 4.830 | 12 | 2-5/8 | 4-7/32 | 3-1/2 | 7/16 | 4-1/8 | 1-55/64 | .669 | 10.4 | 5.9 |
| 13 | D100Q13H | Q2 | 5.820 | 5.223 | 12 | 2-5/8 | 4-7/32 | 3-1/2 | 7/16 | 4-1/8 | 1-55/64 | .669 | 12.4 | 7.9 |
| 14 | D100Q14H | Q1 | 6.230 | 5.617 | 14 | 2-11/16 | 3-3/32 | 2-1/2 | 5/16 | 4-1/8 | 3/4 | .669 | 10.9 | 7.4 |
| 15 | D100Q15H | Q1 | 6.630 | 6.012 | 14 | 2-11/16 | 3-3/32 | 2-1/2 | 5/16 | 4-1/8 | 3/4 | .669 | 12.6 | 9.1 |
| 16 | D100Q16H | Q1 | 7.030 | 6.407 | 14 | 2-11/16 | 3-3/32 | 2-1/2 | 5/16 | 4-1/8 | 3/4 | .669 | 14.4 | 10.9 |
| 17 | D100R17H | R1 | 7.440 | 6.803 | 14 | 3-3/4 | 3-7/32 | 2-7/8 | 1/16 | 5-3/8 | 7/8 | .669 | 17.5 | 10.0 |
| 18 | D100R18H | R1 | 7.840 | 7.198 | 14 | 3-3/4 | 3-7/32 | 2-7/8 | 1/16 | 5-3/8 | 7/8 | .669 | 19.8 | 12.3 |
| 19 | D100R19 | R1 | 8.240 | 7.595 | 14 | 3-3/4 | 3-7/32 | 2-7/8 | 1/16 | 5-3/8 | 7/8 | .669 | 22.4 | 14.9 |
| 20 | D100R20 | R1 | 8.640 | 7.991 | 14 | 3-3/4 | 3-7/32 | 2-7/8 | 1/16 | 5-3/8 | 7/8 | .669 | 24.9 | 17.4 |
| 21 | D100R21 | R1 | 9.040 | 8.387 | 14 | 3-3/4 | 3-7/32 | 2-7/8 | 1/16 | 5-3/8 | 7/8 | .669 | 27.8 | 20.3 |
| 22 | D100R22 | R1 | 9.440 | 8.783 | 14 | 3-3/4 | 3-7/32 | 2-7/8 | 1/16 | 5-3/8 | 7/8 | .669 | 30.3 | 22.8 |
| 24 | D100R24 | R1 | 10.250 | 9.577 | 14 | 3-3/4 | 3-7/32 | 2-7/8 | 1/16 | 5-3/8 | 7/8 | .669 | 37.0 | 29.5 |
| 35 | D100R35 | R1 | 14.640 | 13.945 | 14 | 3-3/4 | 3-7/32 | 2-7/8 | 1/16 | 5-3/8 | 7/8 | .669 | 84.3 | 76.8 |
| 45 | D100S45 | S1 | 18.630 | 17.920 | 15 | 4-1/4 | 4-3/4 | 4-3/8 | 1-15/64 | 6-3/8 | 1-1/16 | .669 | 151.5 | 138.0 |
| 60 | D100S60 | S1 | 24.600 | 23.884 | 15 | 4-1/4 | 4-3/4 | 4-3/8 | 1-15/64 | 6-3/8 | 1-1/16 | .669 | 264.5 | 251.0 |
| 70 | D100S70 | S1 | 28.580 | 27.862 | 18 | 4-1/4 | 7-1/8 | 6-3/4 | 2 1/4 | 6-3/8 | 2-7/16 | .669 | 371.5 | 358.0 |
| 80 | D100S80 | S1 | 32.570 | 31.839 | 18 | 4-1/4 | 7-1/8 | 6-3/4 | 2 1/4 | 6-3/8 | 2-7/16 | .669 | 444.5 | 431.0 |

Sprockets with "H" suffix have hardened teeth.

Double - MST Sprockets

No. 120 1-1/2 Pitch

Note:
Chain Row
Dimension is
2.683"

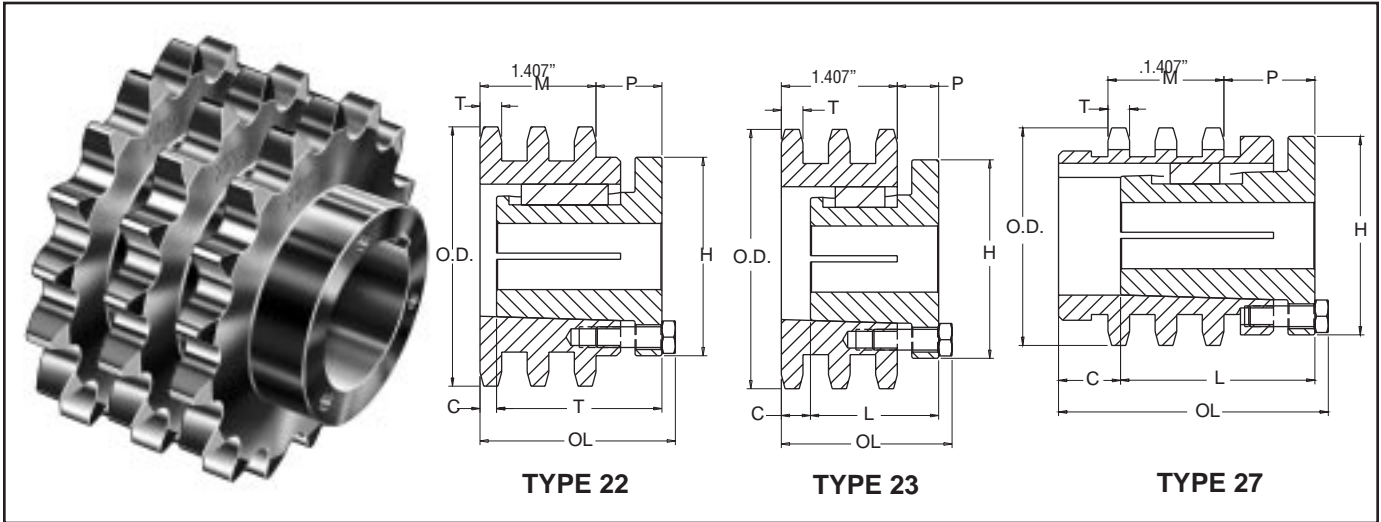
| No. Teeth | Catalog Number | Bush-ing | Diameters | | Type | Max. Bore | Dimensions | | | | | | Weight (Approx.) | |
|-----------|----------------|----------|--------------|------------|------|-----------|------------|-------|---------|-------|--------|--------|------------------|----------|
| | | | Outside Dia. | Pitch Dia. | | | OL | L | C | H | P | T(nom) | With Hub | Rim Only |
| 30 | D120S30 | S1 | 15.170 | 14.350 | 15 | 4-1/4 | 4-3/4 | 4-3/8 | 5/8 | 6-3/8 | 1-1/16 | .894 | 118.5 | 105.0 |
| 35 | D120S35 | S1 | 17.570 | 16.734 | 15 | 4-1/4 | 4-3/4 | 4-3/8 | 5/8 | 6-3/8 | 1-1/16 | .894 | 161.5 | 148.0 |
| 45 | D120S45 | S2 | 22.350 | 21.503 | 18 | 4-3/16 | 7-1/8 | 6-3/4 | 1-27/32 | 6-3/8 | 2-7/32 | .894 | 287.0 | 268.0 |
| 60 | D120U60 | U0 | 29.520 | 28.661 | 15 | 5-1/2 | 5-23/32 | 5-1/4 | 1-9/32 | 8-3/8 | 19/32 | .894 | 213.0 | 183.0 |

Sprockets with "H" suffix have hardened teeth.

No. 40-3

1/2" Pitch

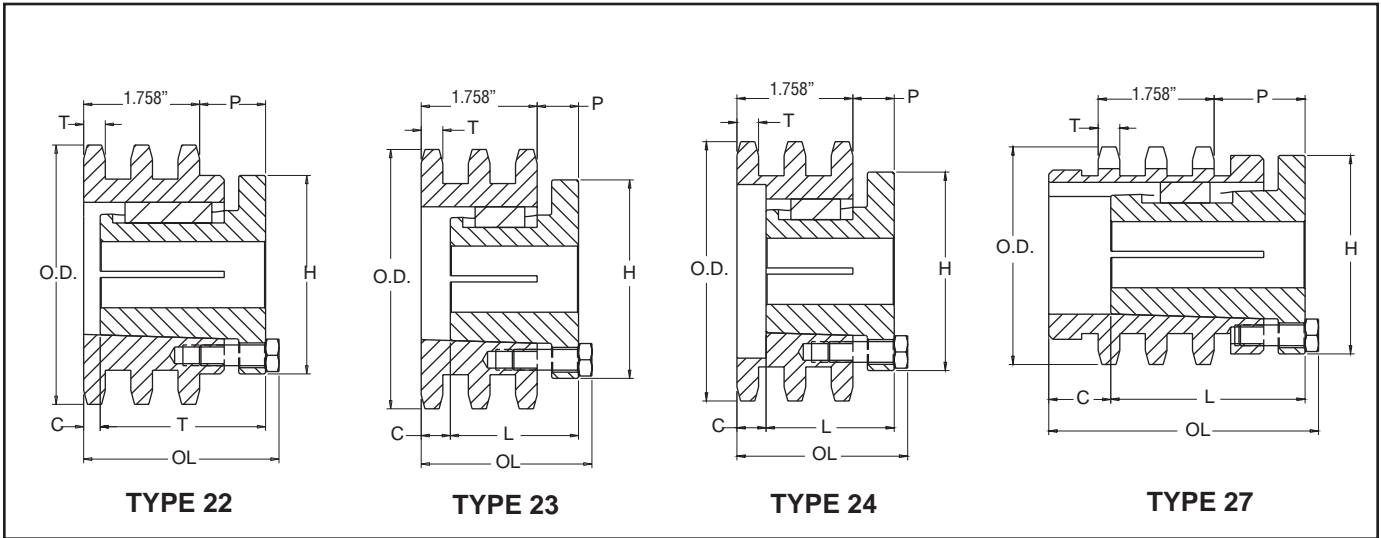
MST Sprockets



Triple - MST Sprockets

| No. Teeth | Catalog Number | Bush-ing | Diameters | | Type | Max. Bore | Dimensions | | | | | | Weight (Approx.) | |
|-----------|----------------|----------|--------------|------------|------|-----------|------------|---------|-------|-------|--------|--------|------------------|----------|
| | | | Outside Dia. | Pitch Dia. | | | OL | L | C | H | P | T(nom) | With Hub | Rim Only |
| 18 | E40P18H | P1 | 3.140 | 2.879 | 27 | 1-3/4 | 3-3/4 | 1-15/16 | 19/16 | 3 | 1-3/8 | .275 | 3.2 | 1.9 |
| 19 | E40P19H | P1 | 3.300 | 3.038 | 22 | 1-3/4 | 3 1/32 | 1-15/16 | 27/32 | 3 | 1-3/8 | .275 | 3.1 | 1.8 |
| 20 | E40P20H | P1 | 3.460 | 3.196 | 22 | 1-3/4 | 2 31/32 | 1-15/16 | 25/32 | 3 | 1-5/16 | .275 | 3.3 | 2.0 |
| 23 | E40P23H | P1 | 3.940 | 3.672 | 23 | 1-3/4 | 2-9/32 | 1-15/16 | 3/32 | 3 | 5/8 | .275 | 3.6 | 2.3 |
| 24 | E40P24H | P1 | 4.100 | 3.831 | 23 | 1-3/4 | 2-9/32 | 1-15/16 | 3/32 | 3 | 5/8 | .275 | 3.9 | 2.6 |
| 25 | E40P25H | P1 | 4.260 | 3.989 | 23 | 1-3/4 | 2-9/32 | 1-15/16 | 3/32 | 3 | 5/8 | .275 | 4.3 | 3.0 |
| 27 | E40P27H | P1 | 4.580 | 4.307 | 23 | 1-3/4 | 2-9/32 | 1-15/16 | 3/32 | 3 | 5/8 | .275 | 4.6 | 3.3 |
| 30 | E40Q30H | Q1 | 5.060 | 4.783 | 22 | 2-11/16 | 2-25/32 | 2-1/2 | 0 | 4-1/8 | 1-3/32 | .275 | 8.0 | 4.5 |
| 35 | E40Q35H | Q1 | 5.860 | 5.578 | 22 | 2-11/16 | 2-25/32 | 2-1/2 | 0 | 4-1/8 | 1-3/32 | .275 | 10.4 | 6.9 |
| 36 | E40Q36H | Q1 | 6.020 | 5.737 | 22 | 2-11/16 | 2-25/32 | 2-1/2 | 0 | 4-1/8 | 1-3/32 | .275 | 11.1 | 7.6 |
| 42 | E40Q42H | Q1 | 6.970 | 6.691 | 22 | 2-11/16 | 2-25/32 | 2-1/2 | 0 | 4-1/8 | 1-3/32 | .275 | 14.6 | 11.1 |
| 48 | E40Q48H | Q1 | 7.930 | 7.645 | 22 | 2-11/16 | 2-25/32 | 2-1/2 | 0 | 4-1/8 | 1-3/32 | .275 | 18.7 | 15.2 |
| 52 | E40Q52H | Q1 | 8.570 | 8.281 | 22 | 2-11/16 | 2-25/32 | 2-1/2 | 0 | 4-1/8 | 1-3/32 | .275 | 22.2 | 18.7 |
| 54 | E40Q54H | Q1 | 8.890 | 8.599 | 22 | 2-11/16 | 2-25/32 | 2-1/2 | 0 | 4-1/8 | 1-3/32 | .275 | 23.4 | 19.9 |
| 60 | E40Q60H | Q1 | 9.840 | 9.554 | 22 | 2-11/16 | 2-25/32 | 2-1/2 | 0 | 4-1/8 | 1-3/32 | .275 | 28.8 | 25.3 |
| 68 | E40Q68 | Q1 | 11.120 | 10.826 | 22 | 2-11/16 | 2-25/32 | 2-1/2 | 0 | 4-1/8 | 1-3/32 | .275 | 37.0 | 33.5 |
| 72 | E40Q72 | Q1 | 11.750 | 11.463 | 22 | 2-11/16 | 2-25/32 | 2-1/2 | 0 | 4-1/8 | 1-3/32 | .275 | 41.4 | 37.9 |
| 76 | E40Q76 | Q1 | 12.390 | 12.099 | 22 | 2-11/16 | 2-25/32 | 2-1/2 | 0 | 4-1/8 | 1-3/32 | .275 | 46.0 | 42.5 |
| 84 | E40Q84 | Q1 | 13.660 | 13.372 | 22 | 2-11/16 | 2-25/32 | 2-1/2 | 0 | 4-1/8 | 1-3/32 | .275 | 55.9 | 52.4 |
| 95 | E40Q95 | Q1 | 15.410 | 15.122 | 22 | 2-11/16 | 2-25/32 | 2-1/2 | 0 | 4-1/8 | 1-3/32 | .275 | 71.4 | 67.9 |
| 102 | E40Q102 | Q1 | 16.530 | 16.236 | 22 | 2-11/16 | 2-25/32 | 2-1/2 | 0 | 4-1/8 | 1-3/32 | .275 | 82.0 | 78.5 |

Sprockets with "H" suffix have hardened teeth.



Triple - MST Sprockets

| No. Teeth | Catalog Number | Bush-ing | Diameters | | Type | Max. Bore | Dimensions | | | | | | Weight (Approx.) | |
|-----------|----------------|----------|--------------|------------|------|-----------|------------|---------|-------|-------|-------|--------|------------------|----------|
| | | | Outside Dia. | Pitch Dia. | | | OL | L | C | H | P | T(nom) | With Hub | Rim Only |
| 15 | E50P15H | P2 | 3.320 | 3.006 | 27 | 1-3/4 | 4-1/8 | 2-15/16 | 15/16 | 3 | 1-3/8 | .332 | 4.0 | 2.5 |
| 16 | E50P16H | P2 | 3.520 | 3.204 | 22 | 1-3/4 | 3 3/8 | 2-15/16 | 3/16 | 3 | 1-3/8 | .332 | 3.9 | 2.4 |
| 17 | E50P17H | P2 | 3.720 | 3.401 | 22 | 1-3/4 | 3 3/8 | 2-15/16 | 3/16 | 3 | 1-3/8 | .332 | 4.3 | 2.8 |
| 18 | E50P18H | P2 | 3.920 | 3.599 | 22 | 1-3/4 | 3 3/8 | 2-15/16 | 3/16 | 3 | 1-3/8 | .332 | 4.9 | 3.4 |
| 19 | E50P19H | P1 | 4.120 | 3.797 | 24 | 1-3/4 | 2-5/8 | 1-15/16 | 7/16 | 3 | 5/8 | .332 | 4.2 | 2.9 |
| 20 | E50P20H | P1 | 4.320 | 3.995 | 24 | 1-3/4 | 2-5/8 | 1-15/16 | 7/16 | 3 | 5/8 | .332 | 4.4 | 3.1 |
| 21 | E50P21H | P1 | 4.520 | 4.194 | 24 | 1-3/4 | 2-5/8 | 1-15/16 | 7/16 | 3 | 5/8 | .332 | 4.8 | 3.5 |
| 23 | E50P23H | P1 | 4.920 | 4.590 | 24 | 1-3/4 | 2-5/8 | 1-15/16 | 7/16 | 3 | 5/8 | .332 | 5.8 | 4.5 |
| 24 | E50Q24H | Q1 | 5.120 | 4.788 | 23 | 2-11/16 | 2-25/32 | 2-1/2 | 0 | 4-1/8 | 3/4 | .332 | 8.2 | 4.7 |
| 25 | E50Q25H | Q1 | 5.320 | 4.987 | 23 | 2-11/16 | 2-25/32 | 2-1/2 | 0 | 4-1/8 | 3/4 | .332 | 8.5 | 5.0 |
| 26 | E50Q26H | Q1 | 5.520 | 5.185 | 23 | 2-11/16 | 2-25/32 | 2-1/2 | 0 | 4-1/8 | 3/4 | .332 | 9.4 | 5.9 |
| 28 | E50Q28H | Q1 | 5.920 | 5.582 | 23 | 2-11/16 | 2-25/32 | 2-1/2 | 0 | 4-1/8 | 3/4 | .332 | 10.8 | 7.3 |
| 30 | E50Q30H | Q1 | 6.320 | 5.979 | 23 | 2-11/16 | 2-25/32 | 2-1/2 | 0 | 4-1/8 | 3/4 | .332 | 12.3 | 8.8 |
| 32 | E50Q32H | Q1 | 6.720 | 6.376 | 23 | 2-11/16 | 2-25/32 | 2-1/2 | 0 | 4-1/8 | 3/4 | .332 | 14.4 | 10.9 |
| 35 | E50Q35H | Q1 | 7.320 | 6.972 | 23 | 2-11/16 | 2-25/32 | 2-1/2 | 0 | 4-1/8 | 3/4 | .332 | 17.2 | 13.7 |
| 36 | E50Q36H | Q1 | 7.520 | 7.171 | 23 | 2-11/16 | 2-25/32 | 2-1/2 | 0 | 4-1/8 | 3/4 | .332 | 18.1 | 14.6 |
| 40 | E50Q40H | Q1 | 8.320 | 7.966 | 23 | 2-11/16 | 2-25/32 | 2-1/2 | 0 | 4-1/8 | 3/4 | .332 | 22.6 | 19.1 |
| 42 | E50Q42H | Q1 | 8.720 | 8.363 | 23 | 2-11/16 | 2-25/32 | 2-1/2 | 0 | 4-1/8 | 3/4 | .332 | 25.0 | 21.5 |
| 48 | E50Q48H | Q1 | 9.910 | 9.556 | 23 | 2-11/16 | 2-25/32 | 2-1/2 | 0 | 4-1/8 | 3/4 | .332 | 33.1 | 29.6 |
| 52 | E50Q52 | Q1 | 10.710 | 10.351 | 23 | 2-11/16 | 2-25/32 | 2-1/2 | 0 | 4-1/8 | 3/4 | .332 | 39.9 | 36.4 |
| 60 | E50R60 | R1 | 12.300 | 11.942 | 22 | 3-3/4 | 2-5/32 | 2-7/8 | 0 | 5-3/8 | 1-1/8 | .332 | 55.5 | 48.0 |
| 68 | E50R68 | R1 | 13.890 | 13.533 | 22 | 3-3/4 | 2-5/32 | 2-7/8 | 0 | 5-3/8 | 1-1/8 | .332 | 71.0 | 63.5 |
| 72 | E50R72 | R1 | 14.690 | 14.329 | 22 | 3-3/4 | 2-5/32 | 2-7/8 | 0 | 5-3/8 | 1-1/8 | .332 | 79.5 | 72.0 |
| 76 | E50R76 | R1 | 15.490 | 15.124 | 22 | 3-3/4 | 2-5/32 | 2-7/8 | 0 | 5-3/8 | 1-1/8 | .332 | 88.5 | 81.0 |
| 84 | E50R84 | R1 | 17.080 | 16.715 | 22 | 3-3/4 | 2-5/32 | 2-7/8 | 0 | 5-3/8 | 1-1/8 | .332 | 107.5 | 100.0 |
| 95 | E50R95 | R1 | 19.270 | 18.903 | 22 | 3-3/4 | 2-5/32 | 2-7/8 | 0 | 5-3/8 | 1-1/8 | .332 | 137.5 | 130.0 |
| 102 | E50R102 | R1 | 20.660 | 20.295 | 22 | 3-3/4 | 2-5/32 | 2-7/8 | 0 | 5-3/8 | 1-1/8 | .332 | 158.5 | 151.0 |

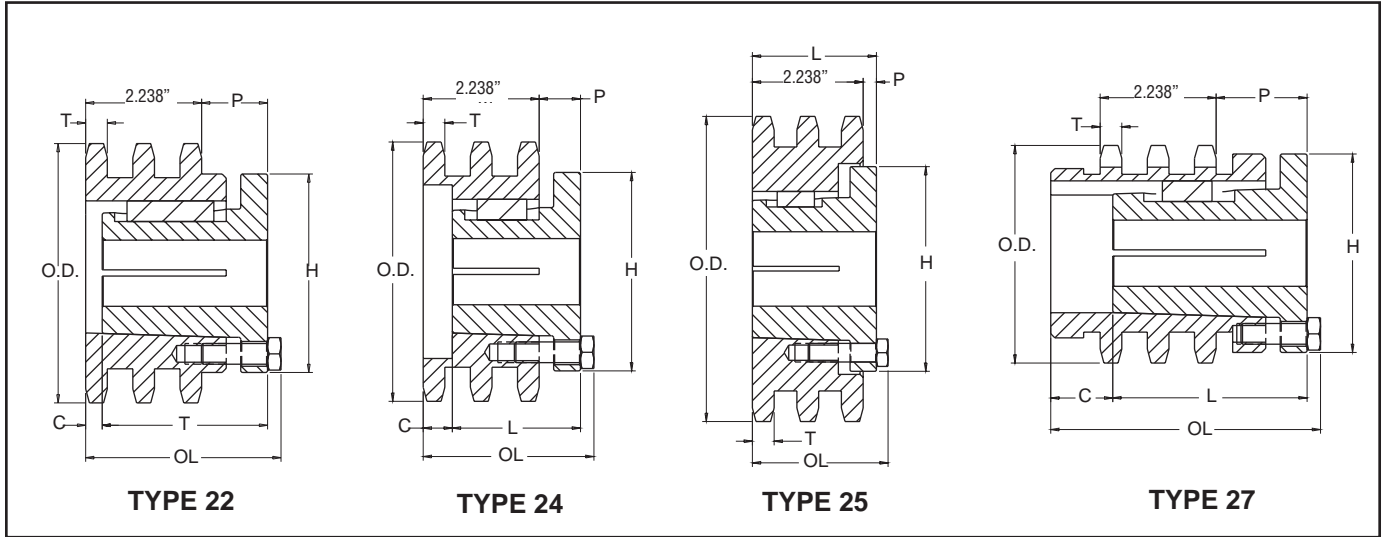
Sprockets with "H" suffix have hardened teeth.

No. 60-3

3/4" Pitch

MST Sprockets

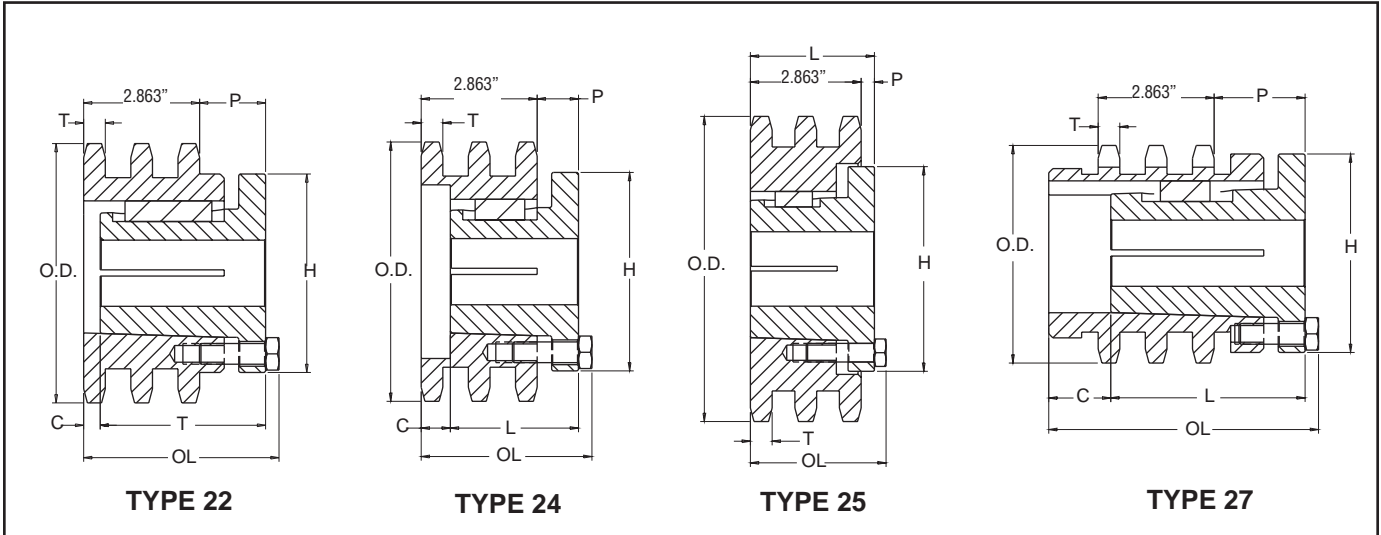
Martin



Triple - MST Sprockets

| No. Teeth | Catalog Number | Bush-ing | Diameters | | Type | Max. Bore | Dimensions | | | | | | Weight (Approx.) | |
|-----------|----------------|----------|--------------|------------|------|-----------|------------|---------|---------|-------|---------|--------|------------------|----------|
| | | | Outside Dia. | Pitch Dia. | | | OL | L | C | H | P | T(nom) | With Hub | Rim Only |
| 13 | E60P13H | P2 | 3.490 | 3.134 | 27 | 1-3/4 | 4 23/32 | 2-15/16 | 1 17/32 | 3 | 1-13/32 | .444 | 4.8 | 3.3 |
| 14 | E60P14H | P2 | 3.740 | 3.371 | 22 | 1-3/4 | 3 29/32 | 2-15/16 | 1-23/32 | 3 | 1-13/32 | .444 | 4.8 | 3.3 |
| 15 | E60P15H | P2 | 3.980 | 3.607 | 22 | 1-3/4 | 3 29/32 | 2-15/16 | 1-23/32 | 3 | 1-13/32 | .444 | 5.5 | 4.0 |
| 16 | E60P16H | P1 | 4.220 | 3.844 | 24 | 1-3/4 | 3 1/8 | 1-15/16 | 15/16 | 3 | 5/8 | .444 | 4.7 | 3.4 |
| 17 | E60Q17H | Q1 | 4.460 | 4.082 | 27 | 2-11/16 | 5 | 3-1/2 | 13/32 | 4-1/8 | 1-21/32 | .444 | 8.1 | 4.6 |
| 18 | E60Q18H | Q1 | 4.700 | 4.319 | 22 | 2-11/16 | 4-3/16 | 3-1/2 | 13/32 | 4-1/8 | 1-21/32 | .444 | 8.5 | 5.0 |
| 19 | E60Q19H | Q1 | 4.950 | 4.557 | 22 | 2-11/16 | 4-3/16 | 3-1/2 | 13/32 | 4-1/8 | 1-21/32 | .444 | 9.4 | 5.9 |
| 20 | E60Q20H | Q1 | 5.190 | 4.794 | 22 | 2-11/16 | 4-3/16 | 3-1/2 | 13/32 | 4-1/8 | 1-21/32 | .444 | 10.5 | 7.0 |
| 21 | E60Q21H | Q1 | 5.430 | 5.032 | 24 | 2-11/16 | 3-1/4 | 2-1/2 | 15/32 | 4-1/8 | 3/4 | .444 | 9.2 | 5.7 |
| 22 | E60Q22H | Q1 | 5.670 | 5.270 | 24 | 2-11/16 | 3-1/4 | 2-1/2 | 15/32 | 4-1/8 | 3/4 | .444 | 10.1 | 6.6 |
| 23 | E60Q23H | Q1 | 5.910 | 5.508 | 25 | 2-11/16 | 2-25/32 | 2-1/2 | 0 | 4-1/8 | 1/4 | .444 | 11.2 | 7.7 |
| 24 | E60Q24H | Q1 | 6.150 | 5.746 | 25 | 2-11/16 | 2-25/32 | 2-1/2 | 0 | 4-1/8 | 1/4 | .444 | 12.3 | 8.8 |
| 25 | E60Q25H | Q1 | 6.390 | 5.984 | 25 | 2-11/16 | 2-25/32 | 2-1/2 | 0 | 4-1/8 | 1/4 | .444 | 13.5 | 10.0 |
| 26 | E60Q26H | Q1 | 6.630 | 6.222 | 25 | 2-11/16 | 2-25/32 | 2-1/2 | 0 | 4-1/8 | 1/4 | .444 | 14.6 | 11.1 |
| 27 | E60Q27H | Q1 | 6.870 | 6.460 | 25 | 2-11/16 | 2-25/32 | 2-1/2 | 0 | 4-1/8 | 1/4 | .444 | 15.9 | 12.4 |
| 28 | E60Q28H | Q1 | 7.110 | 6.699 | 25 | 2-11/16 | 2-25/32 | 2-1/2 | 0 | 4-1/8 | 1/4 | .444 | 17.1 | 13.6 |
| 30 | E60R30H | R1 | 7.590 | 7.175 | 25 | 3-3/4 | 3-5/32 | 2-7/8 | 0 | 5-3/8 | 5/8 | .444 | 21.5 | 14.0 |
| 32 | E60R32H | R1 | 8.070 | 7.652 | 25 | 3-3/4 | 3-5/32 | 2-7/8 | 0 | 5-3/8 | 5/8 | .444 | 26.5 | 19.0 |
| 35 | E60R35H | R1 | 8.780 | 8.367 | 25 | 3-3/4 | 3-5/32 | 2-7/8 | 0 | 5-3/8 | 5/8 | .444 | 29.5 | 22.0 |
| 36 | E60R36H | R1 | 9.020 | 8.605 | 25 | 3-3/4 | 3-5/32 | 2-7/8 | 0 | 5-3/8 | 5/8 | .444 | 30.9 | 23.4 |
| 40 | E60R40 | R1 | 9.980 | 9.559 | 25 | 3-3/4 | 3-5/32 | 2-7/8 | 0 | 5-3/8 | 5/8 | .444 | 38.8 | 31.3 |
| 42 | E60R42 | R1 | 10.460 | 10.036 | 25 | 3-3/4 | 3-5/32 | 2-7/8 | 0 | 5-3/8 | 5/8 | .444 | 42.8 | 35.3 |
| 52 | E60R52 | R1 | 12.850 | 12.422 | 25 | 3-3/4 | 3-5/32 | 2-7/8 | 0 | 5-3/8 | 5/8 | .444 | 70.7 | 63.2 |

Sprockets with "H" suffix have hardened teeth.

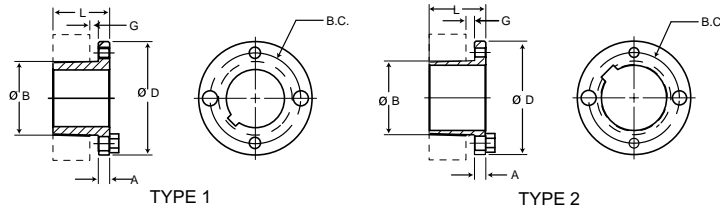


Triple - MST Sprockets

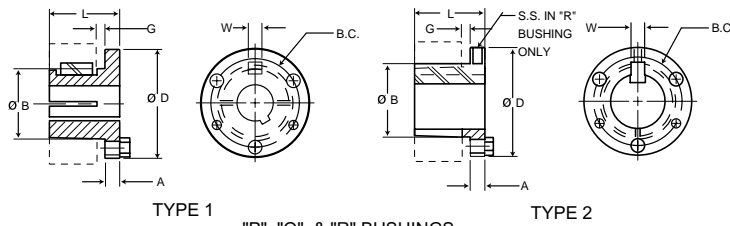
| No. Teeth | Catalog Number | Bush-ing | Diameters | | Type | Max. Bore | Dimensions | | | | | | Weight (Approx.) | |
|-----------|----------------|----------|--------------|------------|------|-----------|------------|---------|-------|-------|---------|--------|------------------|----------|
| | | | Outside Dia. | Pitch Dia. | | | OL | L | C | H | P | T(nom) | With Hub | Rim Only |
| 13 | E80P13H | P2 | 4.660 | 4.179 | 24 | 1-3/4 | 3-3/4 | 2-15/16 | 9/16 | 3 | 5/8 | .557 | 7.2 | 5.7 |
| 14 | E80Q14H | Q2 | 4.980 | 4.494 | 27 | 2-5/8 | 5 25/32 | 3-1/2 | 2 | 4-1/8 | 1-3/4 | .557 | 12.0 | 7.5 |
| 15 | E80Q15H | Q2 | 5.300 | 4.810 | 22 | 2-5/8 | 4 29/32 | 3-1/2 | 1-1/8 | 4-1/8 | 1-3/4 | .557 | 12.6 | 8.1 |
| 16 | E80Q16H | Q2 | 5.630 | 5.126 | 25 | 2-5/8 | 3 7/8 | 3-1/2 | 3/32 | 4-1/8 | 3/4 | .557 | 13.8 | 9.3 |
| 17 | E80Q17H | Q2 | 5.950 | 5.442 | 24 | 2-5/8 | 3 29/32 | 3-1/2 | 1/8 | 4-1/8 | 3/4 | .557 | 14.3 | 9.8 |
| 18 | E80Q18H | Q2 | 6.270 | 5.759 | 24 | 2-5/8 | 3 29/32 | 3-1/2 | 1/8 | 4-1/8 | 3/4 | .557 | 16.5 | 12.0 |
| 19 | E80Q19H | Q2 | 6.590 | 6.076 | 24 | 2-5/8 | 3 29/32 | 3-1/2 | 1/8 | 4-1/8 | 3/4 | .557 | 18.4 | 13.9 |
| 20 | E80R20H | R1 | 6.910 | 6.392 | 24 | 3-3/4 | 4 1/32 | 2-7/8 | 7/8 | 5-3/8 | 7/8 | .557 | 17.7 | 10.2 |
| 21 | E80R21H | R1 | 7.240 | 6.710 | 24 | 3-3/4 | 4 1/32 | 2-7/8 | 7/8 | 5-3/8 | 7/8 | .557 | 19.9 | 12.4 |
| 22 | E80R22H | R1 | 7.560 | 7.027 | 24 | 3-3/4 | 4 1/32 | 2-7/8 | 7/8 | 5-3/8 | 7/8 | .557 | 22.1 | 14.6 |
| 23 | E80R23H | R1 | 7.880 | 7.344 | 25 | 3-3/4 | 3-5/32 | 2-7/8 | 0 | 5-3/8 | 0 | .557 | 23.4 | 15.9 |
| 24 | E80R24 | R1 | 8.200 | 7.661 | 25 | 3-3/4 | 3-5/32 | 2-7/8 | 0 | 5-3/8 | 0 | .557 | 7.2 | 18.5 |
| 25 | E80R25 | R1 | 8.520 | 7.979 | 25 | 3-3/4 | 3-5/32 | 2-7/8 | 0 | 5-3/8 | 0 | .557 | 12.0 | 20.3 |
| 26 | E80R26 | R1 | 8.840 | 8.296 | 25 | 3-3/4 | 3-5/32 | 2-7/8 | 0 | 5-3/8 | 0 | .557 | 12.6 | 23.4 |
| 27 | E80R27 | R1 | 9.160 | 8.614 | 25 | 3-3/4 | 3-5/32 | 2-7/8 | 0 | 5-3/8 | 0 | .557 | 13.8 | 25.8 |
| 28 | E80R28 | R1 | 9.480 | 8.931 | 25 | 3-3/4 | 3-5/32 | 2-7/8 | 0 | 5-3/8 | 0 | .557 | 14.3 | 28.1 |
| 30 | E80R30 | R1 | 10.110 | 9.567 | 25 | 3-3/4 | 3-5/32 | 2-7/8 | 0 | 5-3/8 | 0 | .557 | 16.5 | 33.3 |
| 36 | E80S36 | S1 | 12.030 | 11.474 | 22 | 4-1/4 | 5-1/8 | 4-3/8 | 0 | 6-3/8 | 1-1/2 | .557 | 18.4 | 67.0 |
| 42 | E80S42 | S1 | 13.940 | 13.382 | 22 | 4-1/4 | 5-1/8 | 4-3/8 | 0 | 6-3/8 | 1-1/2 | .557 | 17.7 | 96.1 |
| 45 | E80S45 | S1 | 14.900 | 14.336 | 22 | 4-1/4 | 5-1/8 | 4-3/8 | 0 | 6-3/8 | 1-1/2 | .557 | 19.9 | 112.0 |
| 52 | E80U52 | U0 | 17.130 | 16.562 | 22 | 5-1/2 | 5-23/32 | 5-1/4 | 0 | 8-3/8 | 1-25/32 | .557 | 22.1 | 150.0 |
| 60 | E80U60 | U0 | 19.680 | 19.107 | 22 | 5-1/2 | 5-23/32 | 5-1/4 | 0 | 8-3/8 | 1-25/32 | .557 | 23.4 | 207.0 |
| 68 | E80U68 | U0 | 22.230 | 21.653 | 22 | 5-1/2 | 5-23/32 | 5-1/4 | 0 | 8-3/8 | 1-25/32 | .557 | 23.4 | 271.0 |
| 76 | E80U76 | U0 | 24.780 | 24.198 | 22 | 5-1/2 | 5-23/32 | 5-1/4 | 0 | 8-3/8 | 1-25/32 | .557 | 23.4 | 344.0 |
| 95 | E80U95 | U0 | 30.830 | 30.245 | 25 | 5-1/2 | 5-55/64 | 5-1/4 | 1/32 | 8-3/8 | 1-13/32 | .557 | 23.4 | 183.0 |

Sprockets with "H" suffix have hardened teeth.

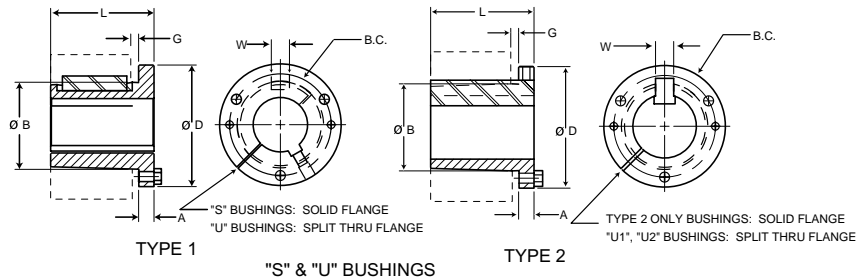
MST Bushings



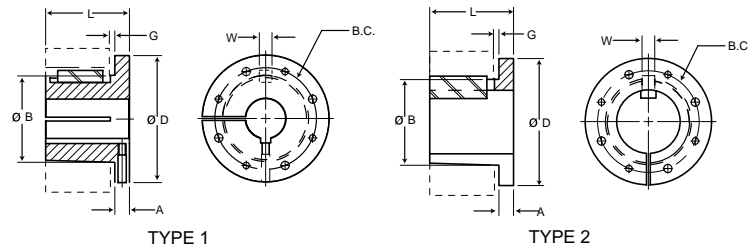
"H" BUSHING



"P", "Q", & "R" BUSHINGS



"S" & "U" BUSHINGS



"W" BUSHINGS

Bushing Specifications

| Part No. | Dimensions | | | | | | | Stock Bore Range | | Cap Screws | | Av. Wt. Lbs. | Wrench Torque In. / lbs. |
|----------|------------|-------|------|-------------|------|-------|-------|------------------|-----------------|------------|-----------|--------------|--------------------------|
| | D | L | A | B Large End | G | B.C. | W | Type 1 | Type 2 | No. | Size | | |
| H | 2.50 | 1.25 | 0.25 | 1.6250 | 0.19 | 2.00 | — | 3/8 - 1-3/8 | 1-7/16 - 1-1/2 | 2 | 1/4X3/4 | 0.8 | 95 |
| P1 | 3.00 | 1.94 | 0.41 | 1.9375 | 0.22 | 2.44 | 0.375 | 1/2 - 1-7/16 | 1-1/2 - 1-3/4 | 3 | 5/16X1 | 1.3 | 192 |
| P2 | 3.00 | 2.94 | 0.41 | 1.9375 | 0.22 | 2.44 | 0.375 | 3/4 - 1-7/16 | 1-1/2 - 1-3/4 | 3 | 5/16X1 | 1.5 | 192 |
| P3 | 3.00 | 4.44 | 0.41 | 1.9375 | 0.22 | 2.44 | 0.375 | 1-1/8 - 1-3/8 | 1-5/8 | 3 | 5/16X1 | 2 | 192 |
| Q1 | 4.12 | 2.50 | 0.53 | 2.8750 | 0.22 | 3.38 | 0.500 | 3/4 - 2-1/16 | 2-1/8 - 2-11/16 | 3 | 3/8X1-1/4 | 3.5 | 348 |
| Q2 | 4.12 | 3.50 | 0.53 | 2.8750 | 0.22 | 3.38 | 0.500 | 1 - 2-1/16 | 2-1/8 - 2-5/8 | 3 | 3/8X1-1/4 | 4.5 | 348 |
| Q3 | 4.12 | 5.00 | 0.53 | 2.8750 | 0.22 | 3.38 | 0.500 | 1-3/8 - 2-1/16 | 2-1/8 - 2-1/2 | 3 | 3/8X1-1/4 | 5.5 | 348 |
| R1 | 5.38 | 2.88 | 0.62 | 4.0000 | 0.25 | 4.62 | 0.750 | 1-1/8 - 2-13/16 | 2-7/8 - 3-3/4 | 3 | 3/8X1-3/4 | 7.5 | 348 |
| R2 | 5.38 | 4.88 | 0.62 | 4.0000 | 0.25 | 4.62 | 0.750 | 1-3/8 - 2-13/16 | 2-7/8 - 3-5/8 | 3 | 3/8X1-3/4 | 11 | 348 |
| S1 | 6.38 | 4.38 | 0.75 | 4.6250 | 0.31 | 5.38 | 0.750 | 1-11/16 - 3-3/16 | 3-1/4 - 4-1/4 | 3 | 1/2X2-1/4 | 13.5 | 840 |
| S2 | 6.38 | 6.75 | 0.75 | 4.6250 | 0.31 | 5.38 | 0.750 | 1-7/8 - 3-3/16 | 3-1/4 - 4-3/16 | 3 | 1/2X2-1/4 | 19 | 840 |
| UO | 8.38 | 5.25 | 1.06 | 6.0000 | 0.44 | 7.00 | 1.250 | 2-3/8 - 3-1/16 | — | 3 | 5/8X2-3/4 | 30 | 1680 |
| UO | 8.38 | 4.94 | 0.75 | 6.0000 | 0.44 | 7.00 | 1.250 | 3-1/4 - 4-1/4 | 4-3/8 - 5-1/2 | 3 | 5/8X2-3/4 | 27 | 1680 |
| U1 | 8.38 | 7.12 | 1.06 | 6.0000 | 0.44 | 7.00 | 1.250 | 2-3/8 - 4-1/4 | 4-3/8 - 5-1/2 | 3 | 5/8X2-3/4 | 40 | 1680 |
| U2 | 8.38 | 10.12 | 1.06 | 6.0000 | 0.44 | 7.00 | 1.250 | 2-7/16 - 4-1/4 | 4-3/8 - 5 | 3 | 5/8X2-3/4 | 50 | 1680 |
| W1 | 12.50 | 8.25 | 1.44 | 8.5000 | 0.44 | 10.00 | 1.250 | 3-3/8 - 6-3/16 | 6-1/4 - 7-7/16 | 4 | 3/4X3 | 104 | 3000 |
| W2 | 12.50 | 11.25 | 1.44 | 8.5000 | 0.44 | 10.00 | 1.250 | 3-3/8 - 6-3/16 | 6-1/4 - 7-7/16 | 4 | 3/4X3 | 133 | 3000 |

All tapers are 3/4" per 12" on Dia.

All dimensions are in inches except, as noted.

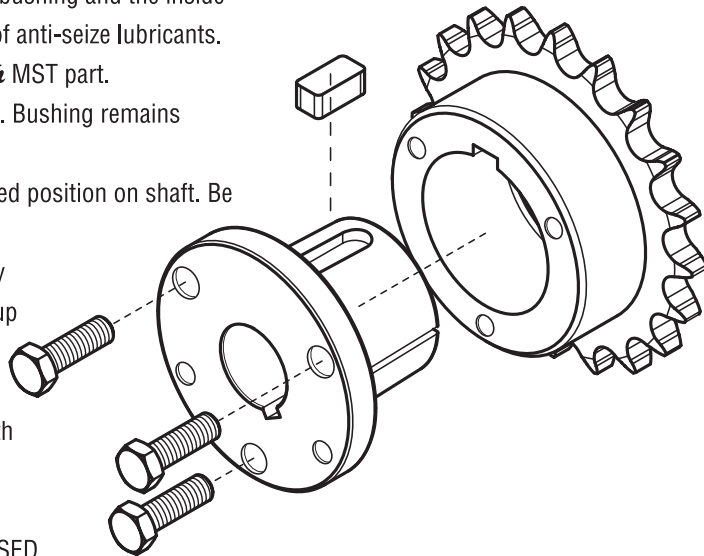
All bushings are ductile iron, sintered steel, or steel. Consult manufacturer for clarification.

Martin MST BUSHING INSTALLATION & REMOVAL INSTRUCTIONS

The MST bushings are easy to install and remove. They are split through the barrel and have a taper to provide a true clamp on the shaft. They are keyed to both the shaft and the hub to help during "blind" installations.

INSTALLATION

1. Be sure the tapered cone surfaces of the bushing and the inside of the driven product are clean and free of anti-seize lubricants.
2. Place bushing in sprocket or other *Martin* MST part.
3. Place cap screws loosely in pull-up holes. Bushing remains loose to assure sliding fit on shaft.
4. With key on shaft, slide sprocket to desired position on shaft. Be sure heads of capscrews are accessible.
5. Align sprocket. Tighten screws alternately and progressively - until they are pulled up tight (see table below). Do not use extensions on wrench handles. Do not allow sprocket to be drawn in contact with flange of bushing. There should be a gap between bushing flange and sprocket.



CAUTION: THIS GAP MUST NOT BE CLOSED.

REMOVAL

1. Loosen and remove capscrews.
2. Insert capscrews in tapped removal holes.
3. Tighten inserted screws until sprocket is loose on shaft.
4. Remove sprocket from shaft.

WRENCH TORQUE VALUES FOR TIGHTENING BUSHINGS

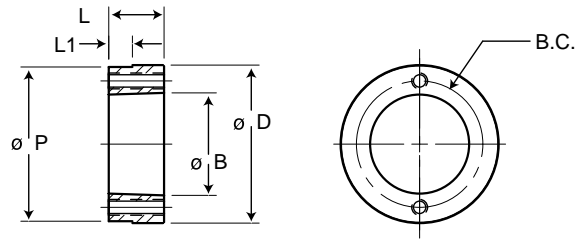
| MST Bushing Size | Size of Cap Screw | Wrench Torque in. / lbs. |
|------------------|-------------------|--------------------------|
| H | 1/4 x 3/4 | 95 |
| P | 5/16 x 1 | 192 |
| Q | 3/8 x 1-1/4 | 348 |
| R | 3/8 x 1-3/4 | 348 |
| S | 1/2 x 2-1/4 | 840 |
| U | 5/8 x 2-3/4 | 1680 |
| W | 3/4 x 3 | 3000 |

CAUTION

WARNING: USE OF ANTI-SEIZE LUBRICANT ON TAPERED CONE SURFACES OR ON BOLT THREADS WHEN MOUNTING MAY RESULT IN DAMAGE TO SHEAVES AND SPROCKETS. THIS VOIDS ALL MANUFACTURER'S WARRANTIES.

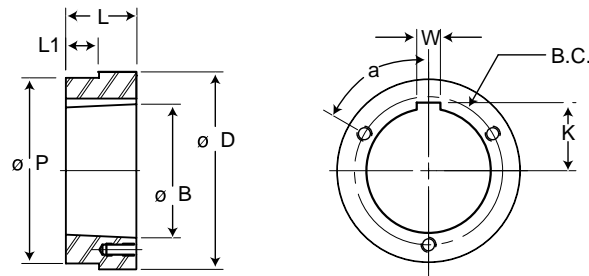
WARNING: Because of the possible danger to person(s) or property from accidents which may result from the improper use of products, it is important that correct procedures be followed: Products must be used in accordance with the engineering information specified in the catalog. Proper installation, maintenance and operation procedures must be observed. The instructions given above must be followed. Inspections should be made as necessary to assure safe operation under prevailing conditions. All rotating power transmission products when used in a drive are potentially dangerous and must be guarded by the user as required by applicable laws, regulations, standards, and good safety practice. (Refer to ANSI Standard B15.1.)

MST Hubs

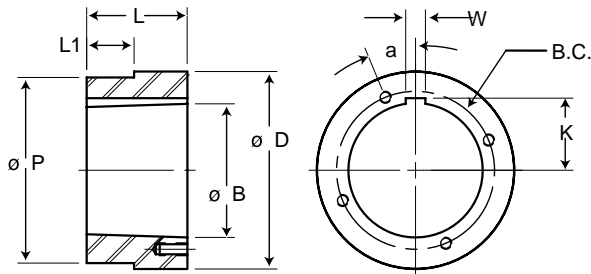


ALL TAPERS 3/4" PER FT. ON DIAMETER

"H" HUBS



"P", "Q", "R", "S", & "U" HUBS



"W" HUBS

Steel Hub Specifications

| Part No. | For Bushing | Dimensions | | | | | | | | | Tapped Holes | | Wt. Lbs. |
|----------|-------------|------------|------|--------|-------|--------|-------|--------|-------|------|--------------|-----------|----------|
| | | D | L | P | L1 | B | K | B.C. | W | a° | No. | Size | |
| HH1 | H | 2.50 | 0.88 | 2.375 | 0.174 | 1.6210 | — | 2.000 | — | — | 2 | 1/4 - 20 | 0.6 |
| HCH1 | H | 2.50 | 0.88 | 2.375 | 0.625 | 1.6210 | — | 2.000 | — | — | 2 | 1/4 - 20 | 0.7 |
| HP1 | P1 | 3.00 | 1.31 | 2.875 | 0.292 | 1.9375 | 1.094 | 2.438 | 0.375 | 60 | 3 | 5/16 - 18 | 1.4 |
| HCP1 | P1 | 3.00 | 1.31 | 2.875 | 1.000 | 1.9375 | 1.094 | 2.438 | 0.375 | 60 | 3 | 5/16 - 18 | 1.1 |
| HP2 | P2 | 3.00 | 2.31 | 2.875 | 1.100 | 1.9375 | 1.094 | 2.438 | 0.375 | 60 | 3 | 5/16 - 18 | 2.5 |
| HQ1 | Q1 | 4.50 | 1.75 | 4.375 | 0.709 | 2.8750 | 1.562 | 3.375 | 0.500 | 60 | 3 | 3/8 - 16 | 4.4 |
| HQ1 | Q1 | 4.50 | 1.75 | 4.375 | 1.250 | 2.8750 | 1.562 | 3.375 | 0.500 | 60 | 3 | 3/8 - 16 | 4.4 |
| HQ2 | Q2 | 4.50 | 2.75 | 4.375 | 1.606 | 2.8750 | 1.562 | 3.375 | 0.500 | 60 | 3 | 3/8 - 16 | 6.9 |
| HR1 | R1 | 5.75 | 2.00 | 5.625 | 0.709 | 4.0000 | 2.188 | 4.625 | 0.750 | 60 | 3 | 3/8 - 16 | 7.3 |
| HR2 | R2 | 5.75 | 4.00 | 5.625 | 1.606 | 4.0000 | 2.188 | 4.625 | 0.750 | 60 | 3 | 3/8 - 16 | 15.4 |
| HS1 | S1 | 6.75 | 3.31 | 6.500 | 0.946 | 4.6250 | 2.562 | 5.375 | 0.750 | 60 | 3 | 1/2 - 13 | 17.3 |
| HS2 | S2 | 6.75 | 5.69 | 6.500 | 2.963 | 4.6250 | 2.562 | 5.375 | 0.750 | 60 | 3 | 1/2 - 13 | 30.4 |
| HU0 | U0 | 8.50 | 3.75 | 8.250 | 2.000 | 6.0000 | 3.250 | 7.000 | 1.250 | 60 | 3 | 5/8 - 11 | 32.0 |
| HU1 | U1 | 8.50 | 5.62 | 8.250 | 2.963 | 6.0000 | 3.250 | 7.000 | 1.250 | 60 | 3 | 5/8 - 11 | 44.6 |
| HU2 | U2 | 8.50 | 8.62 | 8.250 | 6.016 | 6.0000 | 3.250 | 7.000 | 1.250 | 60 | 3 | 5/8 - 11 | 69.0 |
| HW1 | W1 | 12.50 | 6.38 | 12.250 | 2.963 | 8.5000 | 4.562 | 10.000 | 1.250 | 22.5 | 4 | 3/4 - 10 | 130. |

All tapers are 3/4" per 12" on Dia.

All dimensions are in inches, except as noted.