

ENGINEERED CLASS SPROCKETS

PRODUCT	PAGE
INDEX	F-1– F-2
MADE-TO-ORDER CAPABILITIES	F-4
INSTANT SPLIT® SPROCKETS	F-5
SOLID AND SPLIT DETACHABLE HUBS	F-6
SHEAR PIN SPROCKETS	F-7 – F-9
ACCU-TORCH® SPROCKETS	F-10 – F-16
1.654 PITCH (62)	F-11
2.609 PITCH (78)	F-11
3.067 PITCH (1568)	F-12
3.075 PITCH (1030)	F-12
3.075 PITCH (82)	F-13
3.500 PITCH (238)	F-13
4.000 PITCH (124)	F-14
4.063 PITCH (1240)	F-14
4.500 PITCH (635)	F-15
5.000 PITCH (1207)	F-15
6.050 PITCH (132)	F-15
81X HOOKED TOOTH	F-16
STAR GEAR	F-16
CAST IRON SPROCKETS	F-17 – F-42
MTO ENGINEERED CLASS	F-17
SELECT SIZE AVAILABILITY	F-18
TYPES	F-19 – F-20
INFORMATION NEEDED TO QUOTE	F-21
1.631 PITCH (55)	F-22
1.654 PITCH (62)	F-22
2.308 PITCH (67)	F-23
2.609 PITCH (78)	F-23
4.000 PITCH (94R)	F-24
4.000 PITCH (95R)	F-24
4.000 PITCH (102B)	F-24
5.000 PITCH (H102)	F-25
4.040 PITCH (102.5)	F-25
3.075 PITCH (103)	F-25
6.000 PITCH (H104)	F-26
6.000 PITCH (W106)	F-26
6.000 PITCH (S110)	F-26
6.000 PITCH (W110)	F-26
4.760, 7.240 PITCH (111SP)	F-27
4.760 PITCH (111)	F-27
8.000 PITCH (WD112)	F-27
8.000 PITCH (WD116)	F-27
6.000 PITCH (WD119)	F-28
6.000 PITCH (WD120)	F-28
9.000 PITCH (H121)	F-28
8.000 PITCH (WD122)	F-28
9.000 PITCH (WD123)	F-28
4.000 PITCH (H124)	F-29
4.000 PITCH (130)	F-29

ENGINEERED CLASS SPROCKETS

PRODUCT	PAGE
CAST IRON SPROCKETS (CONT.)	F-17 – F-42
6.050 PITCH (132)	F-30
3.000 PITCH (183)	F-30
4.000 PITCH (188)	F-31
4.000 PITCH (194)	F-31
6.000 PITCH (196)	F-32
6.000 PITCH (197)	F-32
3.031 PITCH (348)	F-32
4.031 PITCH (458)	F-33
4.031 PITCH (468)	F-33
8.000 PITCH (WD480)	F-33
4.000 PITCH (483)	F-33
2.563 PITCH (520)	F-34
4.000 PITCH (531)	F-34
6.000 PITCH (625R)	F-34
2.250 PITCH (667)	F-34
6.031 PITCH (678)	F-35
6.031 PITCH (698)	F-35
6.000 PITCH (CS720S)	F-35
6.000 PITCH (720S)	F-36
6.000 PITCH (A730)	F-36
6.000 PITCH (823)	F-37
4.000 PITCH (825)	F-37
6.000 PITCH (830)	F-37
6.000 PITCH (844)	F-38
6.000 PITCH (856)	F-38
9.000 PITCH (E922)	F-38
9.000 PITCH (F933)	F-39
6.000 PITCH (F951)	F-39
9.000 PITCH (B963R)	F-39
9.000 PITCH (D963R)	F-39
9.000 PITCH (E963R)	F-40
9.000 PITCH (F963R)	F-40
9.031 PITCH (998)	F-40
3.075 PITCH (1030)	F-40
4.040 PITCH (1113)	F-41
4.000 PITCH (1120)	F-41
6.000 PITCH (1131)	F-41
12.000 PITCH (F1222)	F-41
4.063 PITCH (1240)	F-42
6.000 PITCH (2180)	F-42
12.000 PITCH (4850)	F-42
2.500 PITCH (9250)	F-42
TRACTION WHEELS	F-43 – 45
SEGMENTAL HUBS	F-46
SEGMENTAL RIM SPROCKETS	F-47
KEY SEATING AND SET SCREWS	F-48



Martin's engineering class sprockets are manufactured to the highest quality standards. Martin offers engineering class sprockets in both flame cut (accu-torch) and cast iron.

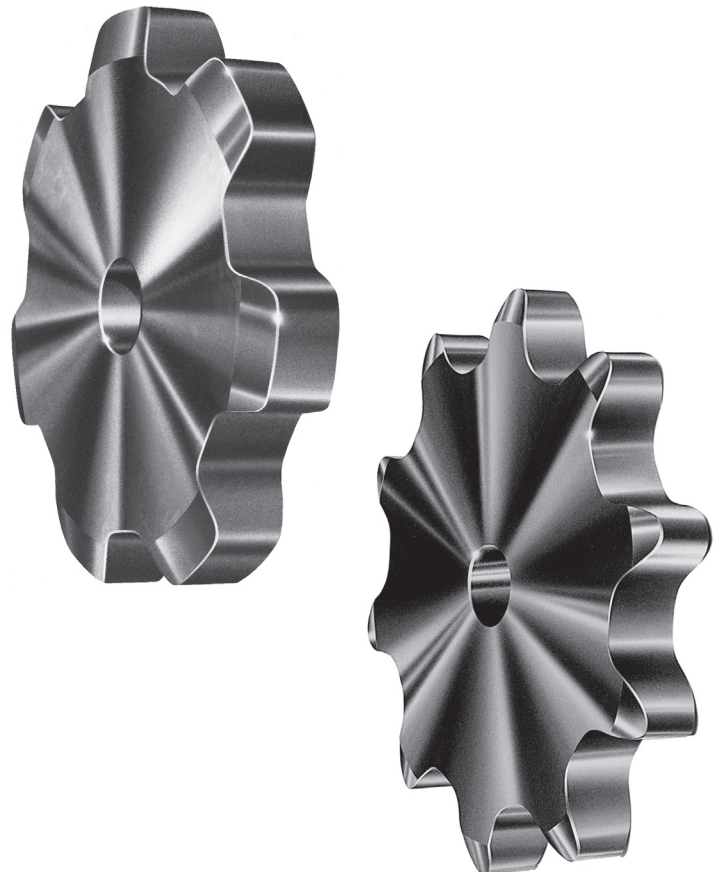
ASME standard torch profiles – elongated root design promotes a self-cleaning effect of the root to keep your demanding applications moving.

These sprockets are available in A, B, and C hub types:

- A style (no hub) typically used in weld-on applications.
- B style (hub one side) is used in applications where clearance width is narrow (these are typically more economical than C style).
- C style (hub both sides) which is used in applications where B style is not wide enough to withstand torques produced by drive.

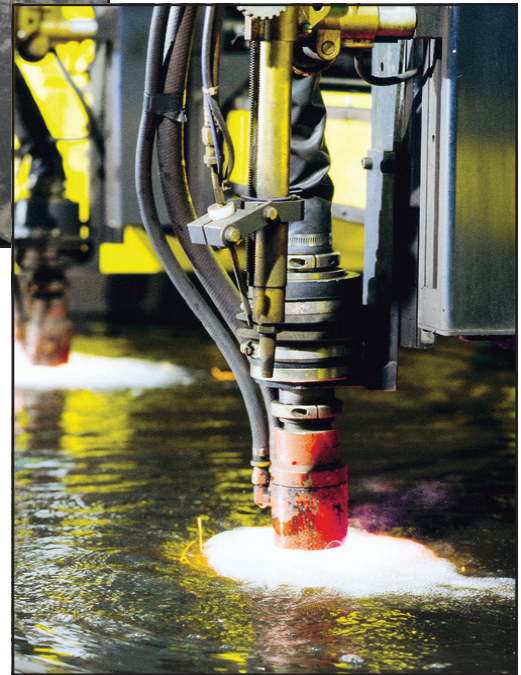
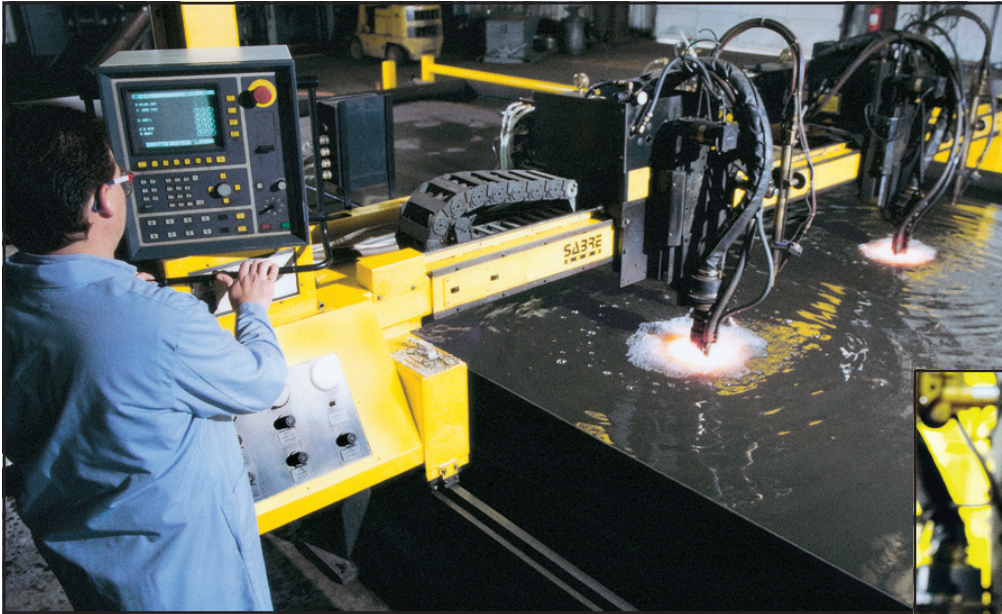
Martin also offers split style construction. The split style allows for easy removal or installation. They can be used in nearly all applications. The shaft/keyway security is much tighter than a typical setscrew mount.

Flame hardening, induction heat treating, and chilled rim are available for longer wear life.



Steel Accu-Torch® Sprockets for Engineering Chain

Martin



Martin Accu-Torch® steel sprockets are available for virtually all engineering class chains in style A, B, and C. Also available as split with welded hub and split or solid detachable hub. May also be furnished as shear pin type. Send us your inquiries.

Where possible please specify chain number, pitch diameter, number of teeth, bore and keyway size, and hub style required.

Accu-Torch® sprockets are not intended to replace cut tooth roller chain sprockets.

MTO Engineered Class Sprockets



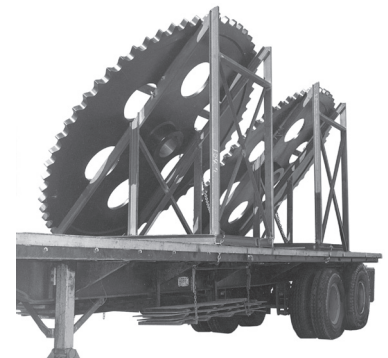
**ALL STEEL
WIDE DRAG SPROCKET**



**SPLINED MUD
RELIEF
ACCU-TORCH®**



**SPECIAL ACCU-TORCH®
FOR SEWAGE TREATMENT**



**10 FT. DIAMETER ACCU-TORCH®
FOR PAPER MILLS**

For quality and dependable service, call Martin for all your made-to-order requirements.



Martin Instant Split® / Accu-Torch® sprockets offer unlimited design and are simply installed with a hand wrench... greatly reducing costly downtime.



Accu-Torch® Size for Instant Split® Hubs

Split Hub Number	Bore	Minimum Number of Teeth										
		Chain Number / Pitch										
		62	78	1568	1030	82	238	124	1240	635	1207	132
		1.654	2.609	3.067	3.075	3.075	3.500	4.000	4.063	4.500	5000	6.050
S-1	.75" - 1.5"	9	7									
S-2	1.375" - 2.25"	12	8	8	8	7	8	6	7			
S-3	2" - 3"	15	10	10	9	9	9	7	8	8		
S-4	2.75" - 4"	18	12	12	11	11	10	9	9	9	8	
S-5	3.75" - 5"	21	14	13	13	12	12	10	10	10	9	7
S-6	4.75" - 6"	23	15	14	14	13	13	11	11	11	10	8
S-7	5.75" - 7"	27	18	16	16	15	15	12	13	12	11	9
S-8	6.25" - 8"	31	20	18	18	17	16	14	14	14	13	10

Pricing Example Style B
1030B25 split with S-3 Hub,
2.938" bore, KW and SS

S-3 Hub
1030A25 Plate

See Hub List
[See Plate List](#)
Total Price List

Pricing Example Style B
1030B25 split with S-3 Hub,
2.938" bore, KW and SS

Two S-3 Hubs
1030A25 Plate

See Hub List
[See Plate List](#)
Total Price List

Instant split hubs are for use with plate sprockets only.

Hub Number	Bore	Hub O.D.	Hub ★ Length	Bolts	Weight (lb)
S-1	.75" - 1.5"	3.125"	1"	.375" × 2.25"	1.8
S-2	1.375" - 2.25"	4.375"	1.25"	.5" × 3"	4.1
S-3	2" - 3"	6.125"	1.375"	.625" × 4.5"	8.4
S-4	2.75" - 4"	7.625"	1.5"	.75" × 5.5"	14.4
S-5	3.75" - 5"	9.25"	2"	1" × 6"	27.8
S-6	4.75" - 6"	10.25"	2.25"	1" × 6"	35.4
S-7	5.75" - 7"	12.5"	2.5"	1" × 7"	64.4
S-8	6.25" - 8"	14.5"	3"	1" × 8"	98.5

★ Add hub length to plate thickness to determine length thru bore.



Solid and Split Detachable Hubs



TYPE D SPROCKETS — STOCK DETACHABLE HUBS

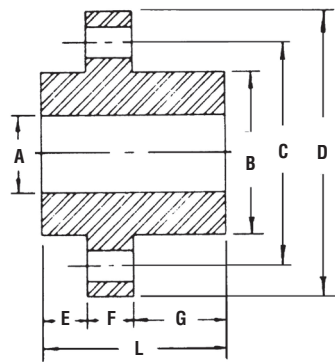
Type D sprockets consist of a Type A plate sprocket bolted to a detachable hub. A solid or split plate sprocket may be assembled to a solid or split hub. When ordering a Type D sprocket, be sure to select a plate sprocket large enough to allow chain clearance over the hub flange diameter, dimension D.

Bolt holes of Type D hubs are drilled for interchangeability. Speed ratios may be changed simply by removing the plate sprocket and substituting another with a different number of teeth. When worn, the sprocket may be reversed to use the unworn tooth surfaces, increasing the life of the sprocket.

Solid Hubs - Steel — Dimensions (Inches)

Hub Number	Bore Range A		Hub Diameter B	Bolt Circle C	Flange Diameter D	Bolt Holes		E	F	G★	L
	Stock	Maximum				Number	Bolt Size				
101	0.625	1.75	2.5	3.375	4.25	6	0.375	0.5	0.375	1.125	2
102	1.438	2	3	4	5	6	0.438	0.5	0.5	1.5	2.5
103	1.813	2.5	4	5.063	6	6	0.5	0.5	0.625	1.625	2.75
104	2.313	3	4.5	5.75	7	6	0.625	0.5	0.75	2	3.25
105	2.563	3.25	5	6.25	7.5	6	0.625	0.563	0.938	2.5	4
106	2.813	3.75	5.5	7	8.5	6	0.625	0.625	1	2.375	4
107	3.313	4	6	7.5	9	6	0.625	0.625	1.25	2.375	4.25
108	3.563	4.5	7	8.625	10.375	6	0.75	0.625	1.375	2.5	4.5
109	4.063	7	10.5	13	15.5	6	1	0.75	1.5	2.75	5

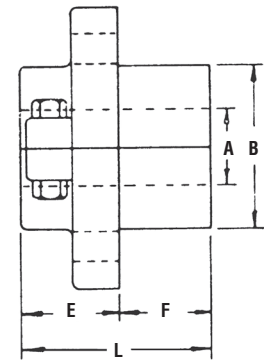
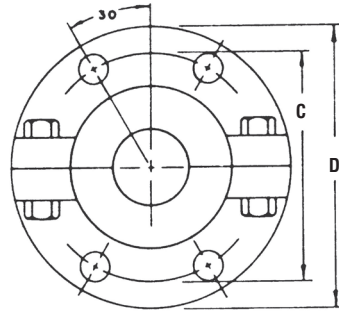
★Maximum bores shown are maximum bores with standard keyseat and setscrew.



ALTERATION CHARGES

See current list price and discount sheet for alteration charges.

The list price as shown in the list price book is for hub with stock bore. To obtain the price of a complete Type D sprocket add the list price of hub plus alteration charges and the list price of the desired Type A plate sprocket, including rebore, bolt hole drilling, and splitting charge if desired.



Split Hubs - Cast Iron — Dimensions (Inches)

Hub Number	Bore Range A		Hub Diameter B	Bolt Circle C	Flange Diameter D	Bolt Holes		E	F★	L
	Stock	Maximum				Number	Bolt Size			
102S	1.313	1.5	3	4	5	4	0.438	1.75	1.375	3.125
103S	1.563	2.25	4	5.063	6	4	0.5	2	1.5	3.5
104S	2.313	2.5	4.5	5.75	7	4	0.625	2.25	1.75	4
105S	2.563	2.75	5	6.25	7.5	4	0.625	2.25	1.875	4.125
106S	2.813	3.25	5.5	7	8.5	4	0.625	2.5	2	4.5
107S	3.313	3.5	6	7.5	9	4	0.625	3	1.75	4.75
108S	3.563	4	7	8.625	10.375	4	0.75	3.375	1.875	5.25
109S	4.063	6	10.5	13	15.5	4	1	4.125	1.75	5.875

Maximum bores shown are maximum bores with standard keyseat and setscrew.

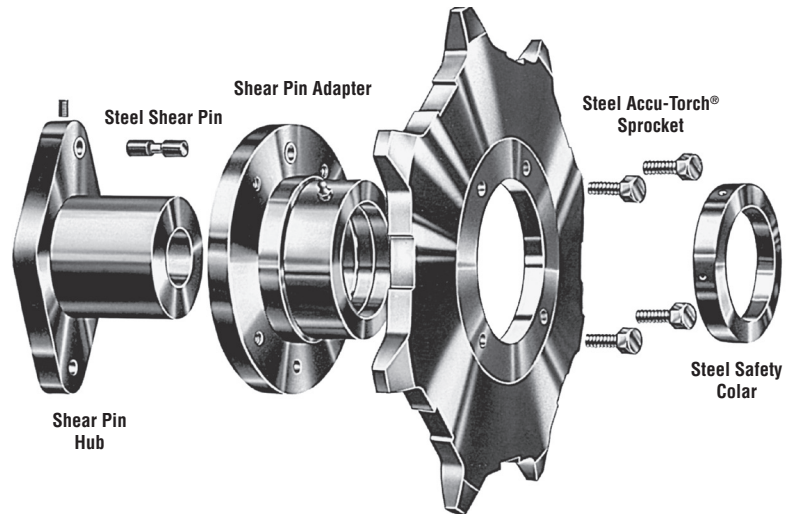
★Plate thickness of Accu-Torch® not recommended if larger than dimension listed.



Shear pin sprockets provide simple, dependable protection against expensive machinery damage caused by overloads or jamming. Torque is transmitted by a single pin, necked to shear when the safe load is exceeded. When an overload occurs, the pin shears, disconnecting the drive immediately.

The bolt-on shear pin adapter converts any plate sprocket into a stock shear pin sprocket allowing immediate delivery of stock shear pin sprockets.

Selection guide on page F-9 gives complete procedure to select the proper shear pin assembly.



Stock Shear Pin Assemblies

Shear Pin Assembly Part Number	Hub Bore Range	Shear Pin Hub Part Number	Shear Pin Adapter Part Number
SP-17	1" and UNDER	SPH-17	SPA-17
SP-18	1.063 - 1.25	SPH-18	SPA-18
SP-19	1.313 - 1.5	SPH-19	SPA-19
SP-20	1.563 - 1.75	SPH-20	SPA-20
SP-21	1.813 - 2	SPH-21	SPA-21
SP-22	2.063 - 2.25	SPH-22	SPA-22
SP-23	2.313 - 2.5	SPH-23	SPA-23
SP-24	2.563 - 2.75	SPH-24	SPA-24
SP-25	2.813 - 3	SPH-25	SPA-25
SP-26	3.063 - 3.5	SPH-26	SPA-26
SP-27	3.563 - 4	SPH-27	SPA-27
SP-28	4.063 - 4.5	SPH-28	SPA-28
SP-29	4.563 - 5	SPH-29	SPA-29
SP-30	4.875 - 5.5	SPH-30	SPA-30
SP-31	5.563 - 6	SPH-31	SPA-31

NOTES ON PRICING:

Shear Pin Hub List Price includes any finished bore within the stated range, standard keyway and setscrew, hardened steel shear pin bushing.

Shear Pin Adapter List Price includes the shear pin bushing, grease fitting.

Complete Assembly List Price includes all components of the shear pin assembly as described above. Total list price of any shear pin sprocket is the complete assembly list price plus the list price of the desired plate sprocket (from tables of stock sprocket list prices).

Replacement Sprockets should be priced as altered stock sprockets directly from list price and alteration charge tables.

Shear Pin Components may be ordered separately and will be treated as stock items when conforming to standard specifications and descriptions above.

PRICING EXAMPLES:

1. Stock Shear Pin Accu-Torch® Sprocket

To price a 25 tooth shear pin sprocket for 1030 chain (1030SP25) using SP-26 shear pin assembly with 3.438" bore, standard keyway and setscrew:

SP-26 Assembly	See List Price Sheet
1030A25	

2. Shear Pin Adapter and Sprocket for Existing Hub

To price a "Bolt-on" shear pin adapter and sprocket to replace the sprocket part of existing 78A12 using SP-20 hub:

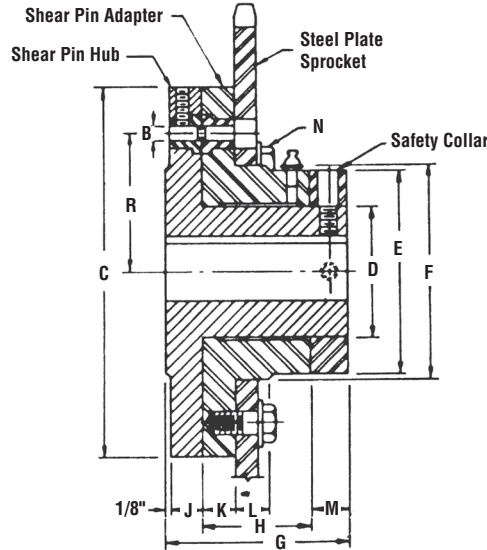
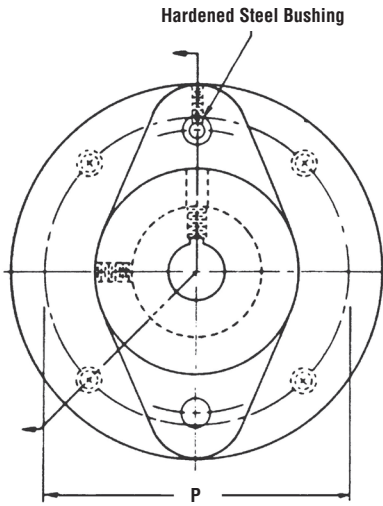
SPA-20 Adapter	See List Price Sheet
78A12	

Shear Pin Sprockets can also be furnished in other standard styles or made to customers specifications. Price on application.

It is important that torque requirement for selected hub be checked in torque rating on page F-9 and neck diameter of shear pins be specified.



Bolt-On Shear Pin Accu-Torch® Sprockets



Sprocket Sizes for Stock Shear Pin Assemblies

Shear Pin Assembly Number	Hub Bore Range	Minimum Teeth Number											
		Chain Number / Pitch											
		62	78	1568	1030	82	238	124	1240	635	1207	132	
		1.654	2.609	3.067	3.075	3.075	3.500	4.000	4.063	4.500	5.000	6.050	
SP-19	1.313 - 1.5	16											
SP-20	1.563 - 1.75	17	12										
SP-21	1.813 - 2	19	13					11					
SP-22	2.063 - 2.25	21	14	13	13	12	12						
SP-23	2.313 - 2.5	22	15	14	13	13	12		10				
SP-24	2.563 - 2.75	25	16	15	15	14	13		11	12	11		
SP-25	2.813 - 3	26	18	16	16	15	14		12	13	12		
SP-26	3.063 - 3.5	28	19	17	17	16	15		13	13	13		
SP-27	3.563 - 4	32	21	19	19	18	17		14	15	14		
SP-28	4.063 - 4.5	34	22	20	20	19	18		15	15	15		
SP-29	4.563 - 5	36	24	21	21	20	19		16	16	15		
SP-30	4.875 - 5.5	41	27	24	23	23	21		18	18	17		
SP-31	5.563 - 6	45	30	26	25	25	23		20	20	19		

AVAILABLE AS MADE TO ORDER
CHECK YOUR NEAREST MARTIN FACILITY

AVAILABLE AS MADE TO ORDER
CHECK YOUR NEAREST MARTIN FACILITY

Shear Pin Assembly Dimensions (Inches)

Shear Pin Assembly Number	Shear Pin		Diameters				Length Thru			Thickness		Sprocket Seat Width	Bolts		Weight (lb)	
	Radius	Pin Diameter	Flange	Shear Pin Hub	Adapter Hub and Collar	Sprocket Seat	Shear Pin Hub	Adapter	Collar	Hub Flange	Adapter Flange		Number and Size	Bolt Circle	Shear Pin Hub	Shear Pin Adapter
	A	B	C	D	E	F	G	H	M	J	K		L	N	P	
SP-19	2.563	0.313	6.75	2.75	4	4.125	3.563	2.125	0.625	0.688	0.688	0.688	4 - 0.5	5.5	7.2	7.6
SP-20	3	0.375	7.75	3.25	4.75	4.875	4.188	2.5	0.75	0.813	0.813	0.688	4 - 0.5	6.25	11.0	11.9
SP-21	3.313	0.438	8.75	3.75	5.25	5.375	4.813	2.875	0.875	0.938	0.938	0.938	4 - 0.625	7	16.2	16.9
SP-22	3.813	0.5	9.75	4.25	6.25	6.375	5.188	3	1	0.688	0.688	0.813	4 - 0.625	8	23.3	24.5
SP-23	4	0.5	10	4.5	6.5	6.625	5.688	3.5	1	0.688	0.688	1.375	4 - 0.625	8.25	26.3	27.7
SP-24	4.375	0.563	11.5	5	7	7.125	6.313	3.875	1.125	0.813	0.813	1.375	4 - 0.625	9.25	40.4	38.6
SP-25	4.875	0.625	12.5	5.5	8	8.125	6.938	4.25	1.25	0.938	0.938	1.375	6 - 0.625	10.25	52.6	53.6
SP-26	5.313	0.688	13.5	6.25	8.75	8.875	7.813	5.875	1.625	1.438	1.438	1.375	6 - 0.625	11.25	66.7	66.8
SP-27	6.063	0.75	15.5	7	10	10.125	8.688	5.5	1.5	1.563	1.5	1.375	6 - 0.625	12.75	96.5	100.0
SP-28	6.438	0.75	16.25	7.75	10.75	10.875	9.688	6.5	1.5	1.563	1.5	1.375	6 - 0.75	13.5	125.0	115.0
SP-29	7.125	0.875	17.5	8.5	12	12.125	10.688	7	1.75	1.813	1.5	1.75	6 - 1	14.75	160.0	150.0
SP-30	8.125	1	20.25	9.75	13.75	13.875	11.688	7.5	2	2.063	1.5	1.75	6 - 1	17	215.0	207.0
SP-31	8.875	1.125	22.5	10.75	15	15.125	12.938	8.25	2.250	2.313	1.5	1.75	6 - 1	18.75	318.0	265.0



Bolt-On Shear Pin Accu-Torch® Sprockets



Shear Pin Sprocket Selection

- The shear pin assembly required is determined by the shaft size. Select the smallest shear pin assembly which will accommodate the required bore. Table on page 130 contains the bore ranges and minimum sprocket sizes which allow chain clearance over the shear pin assembly flange.
- Using one of the following formulas, compute the torque load the pin must transmit and enter the torque rating table below to obtain the proper shear pin neck diameter.

$$T = \frac{HP \times 63,025 \times 1.5}{RPM} \quad \text{or} \quad T = \frac{D \times CP \times 1.5}{2}$$

or T = Output of reducer x speed ratio of chain drive x 1.5

Where:

- T = Torque in pound inches
- HP = Horsepower at sprocket
- RPM = Sprocket speed
- D = Pitch diameter of sprocket
- CP = Chain pull in pounds
- 1.5 = Safety factor for starting load

Example:

- Determine the shear pin assembly and pin neck diameter to transmit 20 horsepower at 67 RPM with a 36 tooth, No. 62 sprocket on a 2.938" shaft.

- Referring to Table I, shear pin assembly SP-25 is required for a 2.938" bore. The 36 tooth sprocket is well above the minimum size.

- Torque and neck diameter:

$$T = \frac{HP \times 63,025 \times 1.5}{RPM}$$

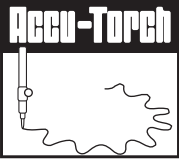
$$T = \frac{20 \times 63,025 \times 1.5}{67} = 28,200 \text{ lb.in.}$$

Referring to Table II under SP-25, a pin necked to 3/8" shows a torque rating of 29,810 lb. in., which exceeds the 28,200 lb. in. required.

- Order: 62SP36, SP-25 assembly with 2.938" bore and .375" pin neck diameter.

Shear Pin Assembly Dimensions (Inches)

Shear Pin Neck Diameter (Inches)	TORQUE RATING — POUND INCHES														
	Shear Pin Hub Number														
	SP17	SP18	SP19	SP20	SP21	SP22	SP23	SP24	SP25	SP26	SP27	SP28	SP29	SP30	SP31
3/32	1133	1367	1560	1716	1893	2055	2156								
1/8	2014	2430	2774	3051	3365	3654	3833								
5/32	3147	3796	4334	4767	5258	5709	5989	6783							
3/16	4532	5467	6240	6864	7571	8221	8624	9768	10508						
7/32	6168	7441	8494	9343	10305	11190	11738	13295	14302						
1/4	8056	9718	11094	12203	13459	14615	15332	17365	18680	19520	22989	24411			
9/32			14041	15444	17034	18497	19404	21978	23642	24705	29096	30895			
5/16			17334	19067	21030	22836	23956	27133	29188	30500	35921	38142	41867		
11/32				23071	25446	27632	28987	32831	35317	36905	43464	46152	50659		
3/8				27456	30283	32884	34497	39071	42030	43920	51726	54925	60289	66730	
13/32					35541	38593	40486	45855	49327	51545	60706	64461	70756	78315	
7/16					41219	44759	46954	53181	57208	59780	70404	74759	82060	90827	
15/32						51381	53901	61049	65672	68625	80821	85820	94201	104266	
1/2						58460	61327	69460	74720	78080	91957	97644	107180	118631	
17/32								78414	84352	88145	103811	110231	120997	133923	
9/16								87911	94568	98820	116383	123581	135650	150142	
19/32									105367	110105	129673	137694	151141	167288	179992
5/8									116750	122000	143683	152569	167469	185361	199437
21/32										134505	158410	168208	184635	204360	219880
11/16										147620	173856	184609	202638	224287	241319
23/32											190020	201773	221478	245140	263756
3/4											206903	219700	241156	266920	287190
25/32													261671	289626	311621
13/16													283023	313260	337049
27/32													305213	337820	363474
7/8													328240	363307	390897
29/32														389721	419317
15/16														417062	448734
31/32														445330	479148
1														474524	510559
1 1/16															576374
1 1/8															646177



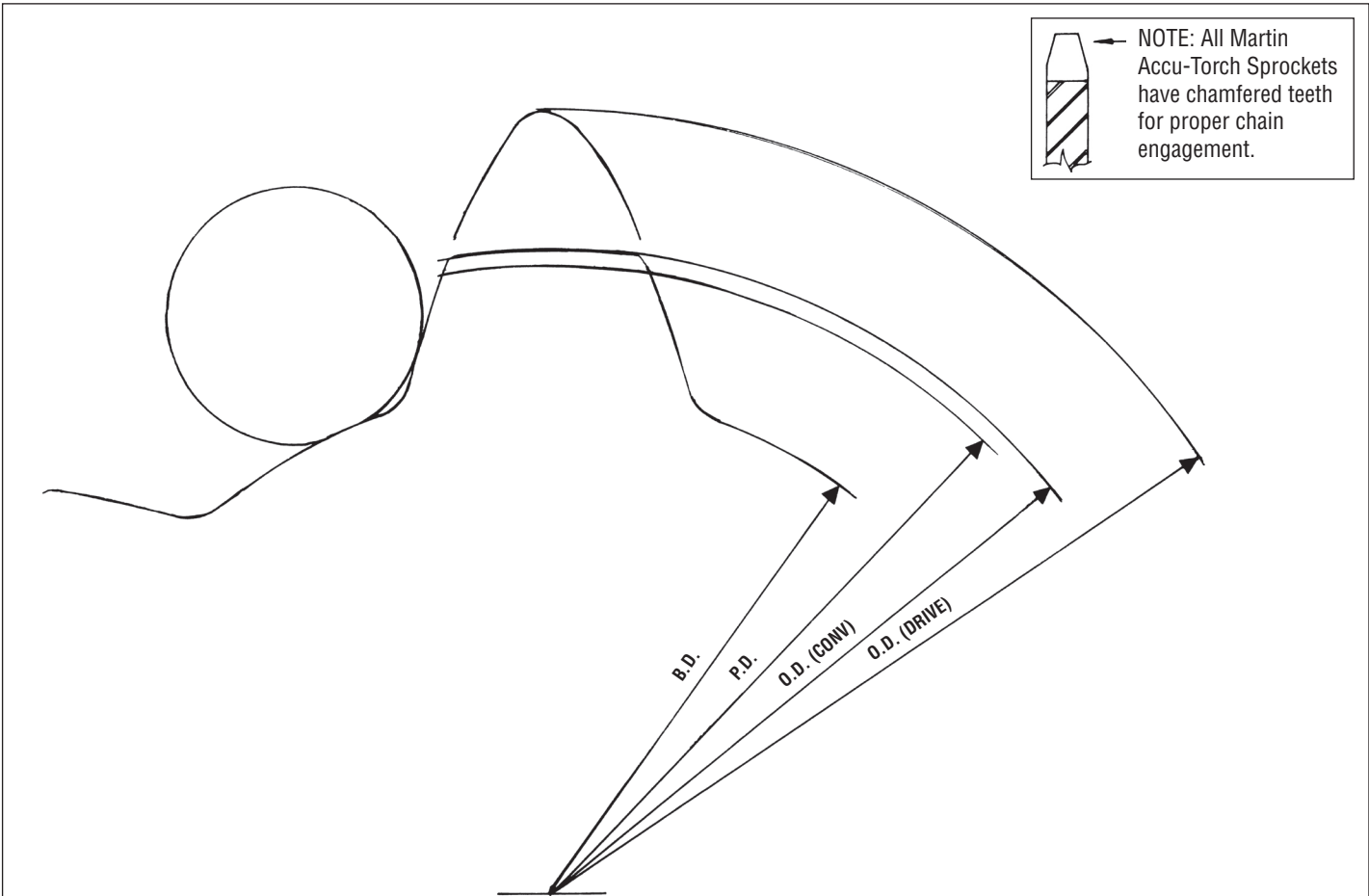
Flame Cut Sprockets for Engineering Chains



Conveyor Style Tooth for Chains:
78 — 82 — 124 — 132



Driver Style Tooth for Chains:
62 — 1568 — 1030 — 238 — 1240 — 635 — 1207

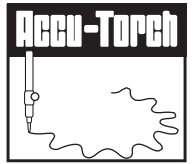


Accu-Torch Sprockets are not intended to replace cut tooth roller chain sprockets.

NOTE: For style other than Type "C" or Type "A", or Tooth Size not shown, consult factory for price. See Current List Price Sheet for Stock Pricing.



Flame Cut Sprockets for Engineering Chains



62

FLAME CUT SPROCKETS FOR CHAINS: 062, 072, 162, 162 R, 2, 378 R, 402 RX, 62 CAST, 62 H, 62 Steel, 62A, 72 1/2, 962, H 62, HF 62 A, IS 620, LXS 627, R 362, R432, RR 362, RR 432, US 620, US 622

Type C — 1.654" Pitch

PLATE THICKNESS 0.75"
ROLLER DIAMETER 0.8125"

Type A

Number of Teeth	Catalog Number	Pitch Diameter	Stock Bore	Max. Bore	Hub Diameter	L.T.B.	Approximate Weight	Catalog Number	Stock Bore	Approximate Weight
12	62C12	6.39	.938	2.75	4.25	3.125	15.8	62A12	.938	6.8
13	62C13	6.91	.938	3.25	4.75	3	19.4	62A13	.938	8.0
14	62C14	7.43	.938	3.25	4.75	3	20.6	62A14	.938	9.2
15	62C15	7.96	.938	3.25	4.75	3	22.0	62A15	.938	10.5
17	62C17	9	.938	3.25	4.75	3	24.0	62A17	.938	12.0
19	62C19	10.05	.938	3.25	4.75	3	28.0	62A19	.938	16.8
20	62C20	10.57	.938	3.25	4.75	3	30.0	62A20	.938	18.6
24	62C24	12.67	1.25	3.75	5.5	4.375	49.0	62A24	1.25	26.0
26	62C26	13.72	1.25	3.75	5.5	4.375	53.0	62A26	1.25	30.0
30	62C30	15.82	1.25	3.75	5.5	4.375	65.0	62A30	1.25	42.0
36	62C36	18.98	1.25	3.75	5.5	4.375	82.0	62A36	1.25	59.0
54	62C54	28.45	1.25	3.75	5.5	4.375	125.0	62A54	1.25	135.0
60	62C60	31.6	1.25	3.75	5.5	4.375	138.0	62A60	1.25	169.0

78

FLAME CUT SPROCKETS FOR CHAINS: 433 1/2, 488, 578 R, 588 R, 7188, 75, 78, 81X, 87R, 88, 988, C 188, H 74, H 75, H 78, H 78 LR (14 - 18 TEETH ONLY), H 78 RT, H 78 SR, H 79, IS 880, IS 881, IS 882, LXS 881, LXS 882, LXS 886, LXS 887, R 588, R 778, RR 588, RR 778, S 188, S 78, SS 188, US 278 R, US 881, US 882, XS 578

Type C — 2.609" Pitch

PLATE THICKNESS 0.875"
ROLLER DIAMETER 0.875"

Type A

Number of Teeth	Catalog Number	Pitch Diameter	Stock Bore	Max. Bore	Hub Diameter	L.T.B.	Approximate Weight	Catalog Number	Stock Bore	Approximate Weight
8	78C8	6.82	.938	3.25	4.75	3.125	21	78A8	.938	9.0
9	78C9	7.63	1.25	3.438	5.25	3.875	29	78A9	1.25	11.3
10	78C10	8.44	1.25	3.438	5.25	3.875	31	78A10	1.25	13.9
11	78C11	9.26	1.25	3.438	5.25	3.875	34	78A11	1.25	16.7
12	78C12	10.08	1.25	3.438	5.25	3.875	37	78A12	1.25	19.8
13	78C13	10.90	1.25	3.75	5.5	4.5	46	78A13	1.25	23.0
14	78C14	11.72	1.25	3.75	5.5	4.5	49	78A14	1.25	27.0
15	78C15	12.55	1.5	3.75	5.5	4.5	53	78A15	1.5	30.0
17	78C17	14.20	1.5	3.75	5.5	4.5	62	78A17	1.5	39.0
19	78C19	15.85	1.5	4.5	6.5	5.375	90	78A19	1.5	50.0
21	78C21	17.51	1.5	4.5	6.5	5.375	101	78A21	1.5	61.0
24	78C24	19.99	1.5	4.5	6.5	5.375	119	78A24	1.5	79.0
25	78C25	20.82	1.5	4.5	6.5	5.375	124	78A25	1.5	84.0
28	78C28	23.31	1.5	4.5	6.5	5.375	132	78A28	1.5	105.0
30	78C30	24.96	1.5	4.5	6.5	5.375	150	78A30	1.5	123.0
35	78C35	29.11	1.5	4.5	6.5	5.375	170	78A35	1.5	166.0
40	78C40	33.25	1.5	4.938	7.25	6.75	226	78A40	1.5	216.0
42	78C42	34.91	1.5	4.938	7.25	6.75	240	78A42	1.5	240.0
46	78C46	38.31	1.5	4.938	7.25	6.75	258	78A46	1.5	286.0
54	78C54	44.87	1.5	4.938	7.25	6.75	368	78A54	1.5	302.0
60	78C60	49.85	1.5	4.938	7.25	6.75	388	78A60	1.5	322.0

78

BORED-TO-SIZE FLAME CUT SPROCKETS

Type C — 2.609" Pitch

PLATE THICKNESS 0.875"
ROLLER DIAMETER 0.8125"

Part Number	Pitch Diameter	Approximate Weight (lb)	Stock Finished Bores - Includes Keyway and 2 Setscrews						
78CS8	6.82"	21	1.438	1.938	2	2.188	2.438	2.938	—
78CS9	7.63"	29	1.438	1.938	2	2.188	2.438	2.938	—
78CS10	8.44"	31	1.438	1.938	2	2.188	2.438	2.938	3.438*
78CS11	9.26"	34	—	1.938	2	2.188	2.438	2.938	3.438*
78CS12	10.08"	37	—	1.938	2	2.188	2.438	2.938	3.438*
78CS13	10.90"	46	—	1.938	—	2.188	2.438	2.938	3.438*
78CS14	11.72"	49	—	1.938	—	2.188	2.438	2.938	3.438*

Please contact Martin if Hub OD and Length Thru Bore dimensions are critical. These parts have setscrews at 90 degrees and 180 degrees instead of over keyway and 90 degrees.



Flame Cut Sprockets for Engineering Chains



1568

FLAME CUT SPROCKETS FOR CHAINS: 1803 A, 1803 AB, AX 1568, IS 3010, IS 3011, JS 3011, LXS 3011, LXS 3011 M, MXS 3011, SS 568, US 3011, X568, XX 568

Type C — 3.067" Pitch

**PLATE THICKNESS 1.25"
ROLLER DIAMETER 1.625"**

Type A

Number of Teeth	Catalog Number	Pitch Diameter	Stock Bore	Max. Bore	Hub Diameter	L.T.B.	Approximate Weight	Catalog Number	Stock Bore	Approximate Weight
10	1568C10	9.92	1.5	3.75	5.5	4.25	46	1568A10	1.5	28
12	1568C12	11.85	1.5	3.75	5.5	4.25	58	1568A12	1.5	40
14	1568C14	13.78	1.5	3.75	5.5	4.25	73	1568A14	1.5	53
30	1568C30	29.34	1.5	4.5	6.5	5.75	217	1568A30	1.5	240
36	1568C36	35.19	1.5	5.375	7.5	5.875	257	1568A36	1.5	290
42	1568C42	41.04	1.5	5.5	8	6.125	407	1568A42	1.5	340
48	1568C48	46.89	1.5	5.5	8	6.125	448	1568A48	1.5	381

Maximum bores shown will accommodate standard keyseat and setscrew over keyseat. Slightly larger bores are possible with no keyseat, shallow keyseat, or setscrew at angle to keyseat.

1030

FLAME CUT SPROCKETS FOR CHAINS: 1030 , 1037, 1190, 1190 R, 1539, API 3, CHAMPION NO. 3, IS 1030, IS 1031, IS 1032, IS 1037, LXS 1031, LXS 1032, R 1033, R 1035, SS 40, SS 40 Hyp, SXX, US 1031, US 1032

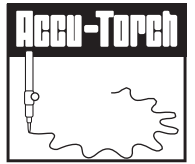
Type C — 3.075" Pitch

**PLATE THICKNESS 1.25"
ROLLER DIAMETER 1.25"**

Type A

Number of Teeth	Catalog Number	Pitch Diameter	Stock Bore	Max. Bore	Hub Diameter	L.T.B.	Approximate Weight	Catalog Number	Stock Bore	Approximate Weight
8	1030C8	8.05	1.25	3.25	5	3.875	31	1030A8	1.25	17.9
9	1030C9	8.99	1.25	3.25	5	3.875	36	1030A9	1.25	22.4
10	1030C10	9.95	1.25	3.25	5	3.875	40	1030A10	1.25	28.0
11	1030C11	10.91	1.5	3.75	5.5	4.25	51	1030A11	1.5	33.0
12	1030C12	11.88	1.5	3.75	5.5	4.25	57	1030A12	1.5	39.0
13	1030C13	12.85	1.5	3.75	5.5	4.25	64	1030A13	1.5	46.0
15	1030C15	14.79	1.5	4	6	5.125	91	1030A15	1.5	60.0
17	1030C17	16.73	1.5	4	6	5.125	109	1030A17	1.5	78.0
19	1030C19	18.68	1.5	4.5	6.5	5.75	137	1030A19	1.5	97.0
21	1030C21	20.63	1.5	4.5	6.5	5.75	158	1030A21	1.5	118.0
24	1030C24	23.56	1.5	4.5	6.5	5.75	176	1030A24	1.5	154.0
25	1030C25	24.53	1.5	5.375	7.5	5.875	206	1030A25	1.5	167.0
28	1030C28	27.46	1.5	5.375	7.5	5.875	236	1030A28	1.5	210.0
30	1030C30	29.42	1.5	5.375	7.5	5.875	254	1030A30	1.5	240.0
35	1030C35	34.30	1.5	5.5	8	6.125	313	1030A35	1.5	327.0
40	1030C40	39.19	1.5	5.5	8	6.125	360	1030A40	1.5	427.0
42	1030C42	41.15	1.5	5.5	8	6.125	410	1030A42	1.5	343.0
48	1030C48	47.03	1.5	6.5	9.5	6.75	501	1030A48	1.5	384.0
54	1030C54	52.89	1.5	6.5	9.5	6.75	549	1030A54	1.5	432.0
60	1030C60	58.75	1.5	7	10	7.5	642	1030A60	1.5	506.0

Maximum bores shown will accommodate standard keyseat and setscrew over keyseat. Slightly larger bores are possible with no keyseat, shallow keyseat, or setscrew at angle to keyseat.



82

FLAME CUT SPROCKETS FOR CHAINS: 103, 131, 382, 4103, 527 R, 527 RX, 6131, C131, C9103, ER131, H 82, S 131, SBO2103, SBS131, SCA9103, SS 131, WH82, WH9103HD, WS 82, WS 82 H

Type C — 3.075" Pitch

PLATE THICKNESS 1.125"
ROLLER DIAMETER 1.219"

Type A

Number of Teeth	Catalog Number	Pitch Diameter	Stock Bore	Max. Bore	Hub Diameter	L.T.B.	Approximate Weight	Catalog Number	Stock Bore	Approximate Weight
7	82C7	7.09	.813	2.938	4.5	3.875	24	82A7	.813	12.6
8	82C8	8.04	1.25	3.75	5.25	4.125	34	82A8	1.25	16
9	82C9	8.99	1.25	3.75	5.25	4.125	38	82A9	1.25	20
10	82C10	9.95	1.25	3.75	5.25	4.125	43	82A10	1.25	25
11	82C11	10.91	1.25	3.938	5.75	4.375	54	82A11	1.25	30
12	82C12	11.88	1.25	3.938	5.75	4.375	60	82A12	1.25	36
13	82C13	12.85	1.25	3.938	5.75	4.375	66	82A13	1.25	42
14	82C14	13.82	1.25	3.938	5.75	4.375	72	82A14	1.25	48
15	82C15	14.79	1.5	4.5	6.5	5.625	94	82A15	1.5	54
16	82C16	15.76	1.5	4.5	6.5	5.625	102	82A16	1.5	62
17	82C17	16.73	1.5	4.5	6.5	5.625	110	82A17	1.5	70
18	82C18	17.71	1.5	4.5	6.5	5.625	119	82A18	1.5	79

Maximum bores shown will accommodate standard keyseat and setscrew over keyseat. Slightly larger bores are possible with no keyseat, shallow keyseat, or setscrew at angle to keyseat.

82

BORED-TO-SIZE FLAME CUT SPROCKETS

Type C — 3.075" Pitch

PLATE THICKNESS 1.125"
ROLLER DIAMETER 1.219"

Number of Teeth	Catalog Number	Pitch Diameter	Approximate Weight (lb)	Stock Finished Bores - Includes Keyway and 2 Setscrews	
10	82CS10	9.95"	43	2.438	2.938
11	82CS11	10.91"	54	2.438	2.938
12	82CS12	11.88"	60	2.438	2.938

Please contact Martin if Hub OD and Length Thru Bore dimensions are critical

238

FLAME CUT SPROCKETS FOR CHAINS: 1616 A, IS 3514 J, LXS 3514, LXS 3514 M, MXS 3514, RX 238, US 3514

Type C — 3.500" Pitch

PLATE THICKNESS 1.25"
ROLLER DIAMETER 1.75"

Type A

Number of Teeth	Catalog Number	Pitch Diameter	Stock Bore	Max. Bore	Hub Diameter	L.T.B.	Approximate Weight	Catalog Number	Stock Bore	Approximate Weight
10	238C10	11.33	1.5	3.75	5.5	4.25	54	238A10	1.5	35
12	238C12	13.52	1.5	3.75	5.5	4.25	70	238A12	1.5	51
14	238C14	15.73	1.5	3.75	5.5	4.25	88	238A14	1.5	60
30	238C30	33.48	1.5	4	6	5.125	312	238A30	1.5	253
36	238C36	40.16	1.5	4	6	5.125	445	238A36	1.5	370
42	238C42	46.84	1.5	5.5	8	6.125	446	238A42	1.5	379
48	238C48	53.52	1.5	5.5	8	6.125	517	238A48	1.5	450

Maximum bores shown will accommodate standard keyseat and setscrew over keyseat. Slightly larger bores are possible with no keyseat, shallow keyseat, or setscrew at angle to keyseat.



Flame Cut Sprockets for Engineering Chains



124 FLAME CUT SPROCKETS FOR CHAINS: H 124, W 124, WH 124, WR 124, WS 124

Type C — 4.000" Pitch

PLATE THICKNESS 1.5"
ROLLER DIAMETER 1.5"

Type A

Number of Teeth	Catalog Number	Pitch Diameter	Stock Bore	Max. Bore	Hub Diameter	L.T.B.	Approximate Weight	Catalog Number	Stock Bore	Approximate Weight
6	124C6	8.00	0.938	3.25	4.75	4.625	36	124A6	0.938	21
7	124C7	9.22	1	3.938	5.75	4.75	52	124A7	1	28
8	124C8	10.45	1	3.938	5.75	4.75	61	124A8	1	37
9	124C9	11.70	1	3.938	5.75	4.75	70	124A9	1	46
10	124C10	12.94	1	3.938	5.75	4.75	79	124A10	1	55
11	124C11	14.20	1.5	4.25	6.25	4.75	95	124A11	1.5	68
12	124C12	15.45	1.5	4.25	6.25	4.75	107	124A12	1.5	80
13	124C13	16.72	1.5	4.25	6.25	4.75	120	124A13	1.5	93
14	124C14	17.98	1.5	4.25	6.25	4.75	135	124A14	1.5	108
15	124C15	19.24	1.5	4.375	6.75	6	168	124A15	1.5	124
16	124C16	20.50	1.5	4.375	6.75	6	185	124A16	1.5	141

Maximum bores shown will accommodate standard keyseat and setscrew over keyseat. Slightly larger bores are possible with no keyseat, shallow keyseat, or setscrew at angle to keyseat.

124 BORED-TO-SIZE FLAME CUT SPROCKETS

Type C — 4.000" Pitch

PLATE THICKNESS 1.5"
ROLLER DIAMETER 1.5"

Part Number	Pitch Diameter	Approximate Weight (lb)	Stock Finished Bores - Includes Keyway and 2 Setscrews		
124CS9	11.70"	70	2.188	2.438	2.938
124CS10	12.94"	79		2.438	2.938 3.438
124CS11	14.20"	95			2.938 3.438
124CS12	15.45"	107			2.938 3.438

Please contact Martin if Hub OD and Length Thru Bore dimensions are critical

1240 FLAME CUT SPROCKETS FOR CHAINS: 1240, 1244, 3 BAR HYPER, API 4, CHAMPION NO. 4, IS 1242, IS 1425, LXS 1242, LXS 1245, R 1248, SS 124, SS 124 D, SS 124 D, SS 124 DP

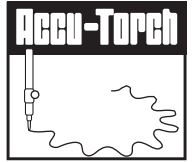
Type C — 4.063" Pitch

PLATE THICKNESS 1.75"
ROLLER DIAMETER 1.75"

Type A

Number of Teeth	Catalog Number	Pitch Diameter	Stock Bore	Max. Bore	Hub Diameter	L.T.B.	Approximate Weight (lb)	Catalog Number	Stock Bore	Approximate Weight (lb)
6	1240C6	8.13	0.938	2.5	4	4	34	1240A6	0.938	26
7	1240C7	9.36	1.25	3.75	5.25	4.75	51	1240A7	1.25	34
8	1240C8	10.62	1.5	4.5	6.5	5	78	1240A8	1.5	44
9	1240C9	11.88	1.5	4.5	6.5	5	89	1240A9	1.5	55
10	1240C10	13.15	1.5	4.5	6.5	5	101	1240A10	1.5	67
11	1240C11	14.42	1.5	4.5	6.5	5	115	1240A11	1.5	81
12	1240C12	15.70	1.5	5.25	7	6	140	1240A12	1.5	96
13	1240C13	16.98	1.5	5.25	7	6	155	1240A13	1.5	111
14	1240C14	18.26	1.5	5.25	7	6	174	1240A14	1.5	130
15	1240C15	19.54	1.5	5.25	7	6	192	1240A15	1.5	148
16	1240C16	20.83	1.5	5.5	8	6.25	230	1240A16	1.5	168
18	1240C18	23.40	1.5	5.5	8	6.25	275	1240A18	1.5	213
20	1240C20	25.97	1.5	5.5	8	6.25	300	1240A20	1.5	263
21	1240C21	27.26	1.5	5.5	8	6.25	319	1240A21	1.5	289
24	1240C24	31.12	1.5	5.5	8	6.25	387	1240A24	1.5	377
25	1240C25	33.42	1.5	6	9	6.25	426	1240A25	1.5	409
28	1240C28	36.29	1.5	6	9	6.25	494	1240A28	1.5	509
30	1240C30	38.87	1.5	7	10	6.75	583	1240A30	1.5	587
35	1240C35	45.33	1.5	7	10	6.75	729	1240A35	1.5	620
40	1240C40	51.78	1.5	7.5	11	7.75	932	1240A40	1.5	721
48	1240C48	62.12	1.5	7.5	11	7.75	1078	1240A48	1.5	867

Maximum bores shown will accommodate standard keyseat and setscrew over keyseat. Slightly larger bores are possible with no keyseat, shallow keyseat, or setscrew at angle to keyseat.



635 FLAME CUT SPROCKETS FOR CHAINS: 1350, 1340 RX, 450 SX, 450 SXX, B 635, IS 4522, LXS 4522 M, RO 635, X 635

Type C — 4.500" Pitch

PLATE THICKNESS 1.75"
ROLLER DIAMETER 2.25"

Type A

Number of Teeth	Catalog Number	Pitch Diameter	Stock Bore	Max. Bore	Hub Diameter	L.T.B.	Approximate Weight (lb)	Catalog Number	Stock Bore	Approximate Weight (lb)
10	635C10	14.56	1.5	4	6.5	5	111	635A10	1.5	87
12	635C12	17.39	1.5	4	6.5	5	148	635A12	1.5	119
14	635C14	20.22	1.5	4	6.5	5	188	635A14	1.5	159
30	635C30	43.05	1.5	5.375	7.5	5.875	592	635A30	1.5	542
36	635C36	51.63	1.5	5.375	7.5	5.875	764	635A36	1.5	715
42	635C42	60.22	1.5	6.5	9.5	7.25	884	635A42	1.5	776
48	635C48	68.81	1.5	7.5	11	7.75	1174	635A48	1.5	963

Maximum bores shown will accommodate standard keyseat and setscrew over keyseat. Slightly larger bores are possible with no keyseat, shallow keyseat, or setscrew at angle to keyseat.

1207 FLAME CUT SPROCKETS FOR CHAINS: 1510 XX, 1602 A, 1602 AA, A 1302, JS 5031, LXS 5028, LXS 6038 M, MXS 5028, RO 1205, RX 1207, US 5201 A

Type C — 5.000" Pitch

PLATE THICKNESS 2.25"
ROLLER DIAMETER 2.5"

Type A

Number of Teeth	Catalog Number	Pitch Diameter	Stock Bore	Max. Bore	Hub Diameter	L.T.B.	Approximate Weight (lb)	Catalog Number	Stock Bore	Approximate Weight (lb)
10	1207C10	16.18	1.5	4.5	6.5	5.5	160	1207A10	1.5	131
12	1207C12	19.32	1.5	4.5	6.5	5.5	215	1207A12	1.5	187
14	1207C14	22.47	1.5	5.375	7.5	5.875	298	1207A14	1.5	254
30	1207C30	47.84	1.5	6	9	6.75	809	1207A30	1.5	730
36	1207C36	57.37	1.5	7	10	8.5	1161	1207A36	1.5	1025
42	1207C42	66.91	1.5	7	10	8.5	1245	1207A42	1.5	1109
48	1207C48	76.45	1.5	7.5	11	10.25	2005	1207A48	1.5	1794

Maximum bores shown will accommodate standard keyseat and setscrew over keyseat. Slightly larger bores are possible with no keyseat, shallow keyseat, or setscrew at angle to keyseat.

132 FLAME CUT SPROCKETS FOR CHAINS: 6150, 150 X, A 132, A 132 WS, C 132, C 132 M, C 132 W, SX 150, SXA 150, W 157, WH 157, WR 157, WS 132

Type C — 6.050" Pitch

PLATE THICKNESS 2.75"
ROLLER DIAMETER 1.719"

Type A

Number of Teeth	Catalog Number	Pitch Diameter	Stock Bore	Max. Bore	Hub Diameter	L.T.B.	Approximate Weight (lb)	Catalog Number	Stock Bore	Approximate Weight (lb)
6	132C6	12.10	1.5	4.5	6.5	6	119	132A6	1.5	90
7	132C7	13.95	1.5	4.5	6.5	6	149	132A7	1.5	120
8	132C8	15.81	1.5	4.5	6.5	6	182	132A8	1.5	153
9	132C9	17.69	1.5	5.375	7.5	6.375	236	132A9	1.5	192
10	132C10	19.58	1.5	5.375	7.5	6.375	278	132A10	1.5	235
11	132C11	21.47	1.5	5.375	7.5	6.375	326	132A11	1.5	283
12	132C12	23.38	1.5	5.375	7.5	6.375	378	132A12	1.5	334

Maximum bores shown will accommodate standard keyseat and setscrew over keyseat. Slightly larger bores are possible with no keyseat, shallow keyseat, or setscrew at angle to keyseat.

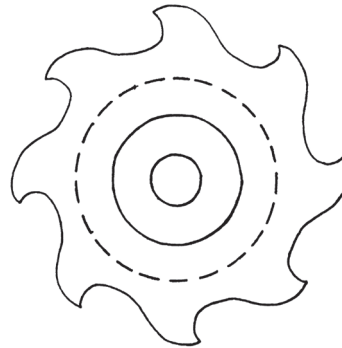
Veneer Dryer Parts



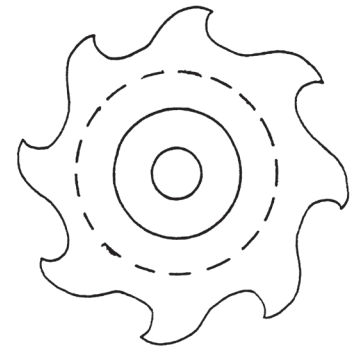
81X 81 X (2.609)

Hooked Tooth Sprocket B Style (Right and Left Hand)

Number of Teeth	Catalog Number	Outside Diameter	Type	Bore		Hub (Inches)	
				Stock	Max.	Diam.	L.T.B.
8	81X-B8RH	6.5	B	1	1.5	2.375	1.625
8	81X-B8LH	6.5	B	1	1.5	2.375	1.625



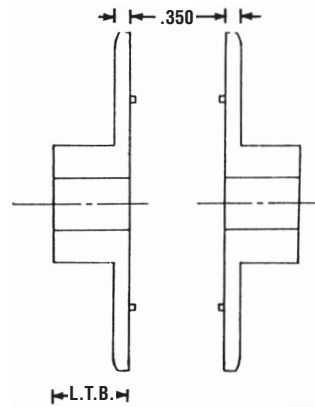
(RH) Right Hand



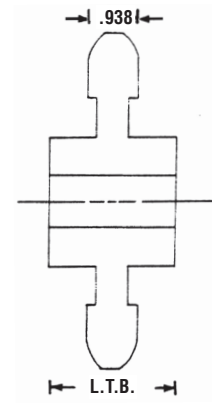
(LH) Left Hand

C Style

Number of Teeth	Catalog Number	Outside Diameter	Type	Bore		Hub (Inches)	
				Stock	Max.	Diam.	L.T.B.
7	81X-C7	5.75	C	.75	1.5	2.375	2.375
8	81X-C8	6.75	C	.75	1.5	2.375	2.375
9	81X-C9	7.438	C	.75	1.5	2.375	2.375



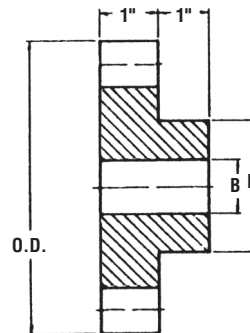
Type B
(Cast Iron)



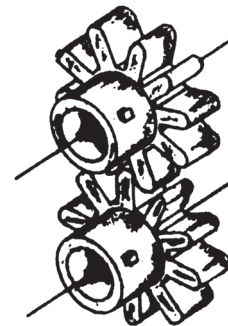
Type C
(Cast Iron)

Star Gear

Number of Teeth	Catalog Number	Outside Diameter	Type	Bore		Hub (Inches)	
				Stock	Max.	Diam.	L.T.B.
10	SG510	4.484	B	1	1.5	2.375	2



Type B
(Cast Iron)

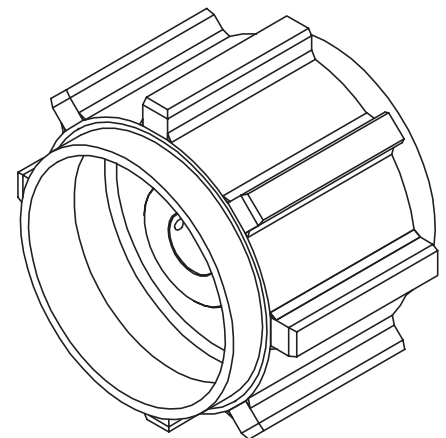
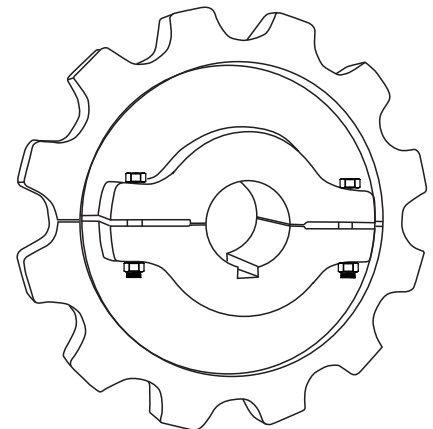
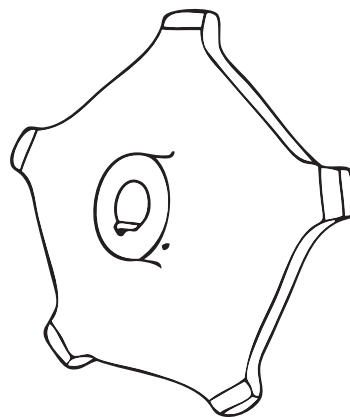


Call Martin for Price and Availability.

MTO Engineered Class Cast Iron Sprockets



- Cast Split Sprockets
- Hunting Tooth Sprockets
- Rivetless Chain Sprocket
- Drag Chain Sprockets
 - Plain
 - Flanged
- Traction Wheels
 - Plain
 - Flanged
- Plate Body Sprockets
- Chain Saver Rim Sprockets
- Adjustable Hub Sprockets
- Chilled Rim Sprockets



Sprockets Available to fit Standard Chain Sizes

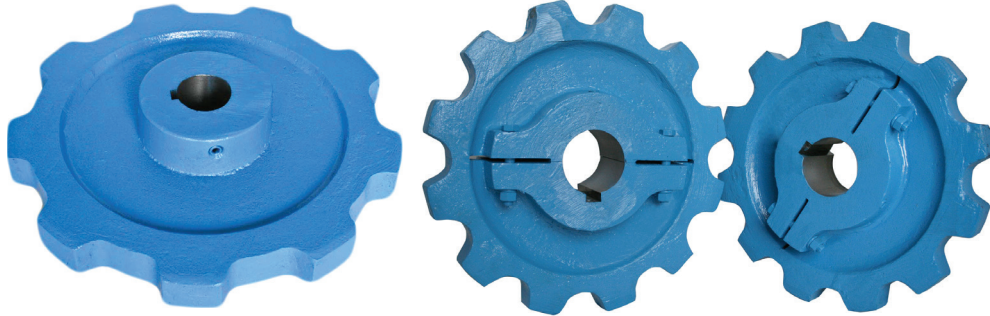
55	103	H121	197	678	856	998
D60	H104	SD121	348	698	859	1030
62	W-106	WD-122	348	CS720S	F912R	1036
67	S-110	WD-123	458	720S	E922	1113
78	WD-110	WD-124	468	730	F922	1120
W-78	111SP	130	WD-480	A730	925R	1131
94R	111	132	483	CS730	933	F1222
95R	WD-112	183	520	823	951	2124
102B	WD-116	188	531	825	D963R	2180
H102	WD-119	194	625R	830	E963R	4850
102.5	WD-120	196	667	844	F963R	9250

Not all sprockets fit all chain sizes, see factory for availability.

Cast Iron Sprocket Types



Now Stocking Select Sizes - Call Martin for Availability



C	830	C	9	CR S
<u>Cast Iron</u>	<u>Chain</u>	<u>Sprocket Type</u>	<u>No. of Teeth</u>	<u>Special Instructions</u>
CWD if Wide Drag	Example: 132 - 82 102B - 55 78 - 131	A - Plate Only B - Hub One Side C - Hub Both Sides D - Detachable Hubs		CR - Chilled Rim S - Split CS - Chain Saver F - Flanged

SPROCKET STYLES

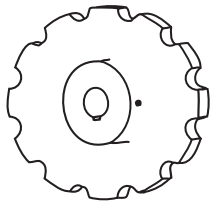


Plate Body

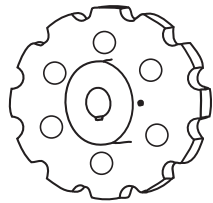
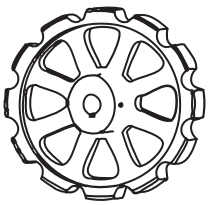
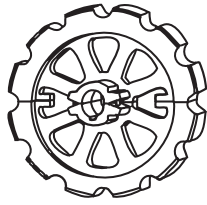


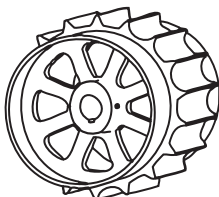
Plate Body with Lightening Holes



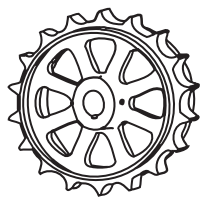
Arm Body



Split Arm Body



Drum Chainsaver Rim Arm Body



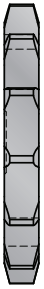
Chainsaver Rim

Cast Arm Body is often used in larger diameter sprockets. The arms are advantageous because they reduce the weight as well as the cost.

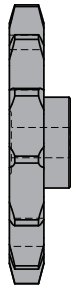
Cast Split (Arm or Plate) Body- The split style sprocket eases maintenance and installation. The sprocket can be removed without having to disassemble an entire system.

Cast Plate Body style is primarily used in smaller diameter sprockets when the arm body style is unnecessary. Larger diameter sprockets only use this plate body style when the torque is beyond the limits of the arm body style.

Special Sprockets – Martin also offers special made-to-order sprockets such as the flanged-rim sprocket (image to the left).



Type A



Type B

Hub Types

Cast Iron Sprockets are offered in different hub types including Type A, B, and C.

Type A

An A Style Sprocket is a flat sprocket with no hub extension on either side.

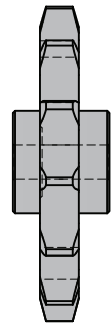
Type B

A B Style Sprocket is a sprocket with a hub extension on one side.

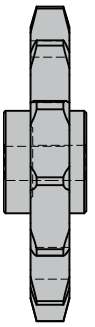
Type C

A C Style Sprocket is a sprocket with a hub extension on both sides.

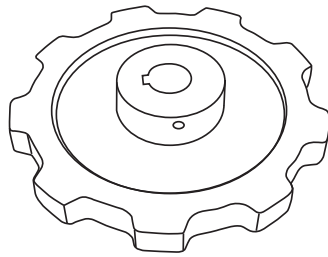
Type C Offset hubs are the same as a "Type C", however the hubs are slightly off center.



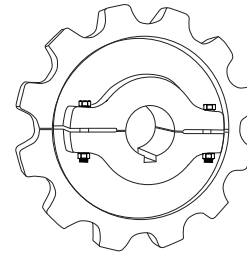
Type C



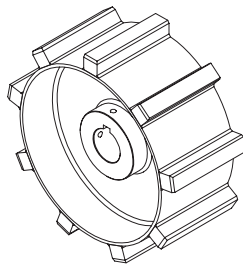
Type C Offset



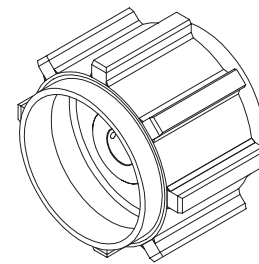
Non-Split Engineering Class Sprockets These sprockets can be supplied in various cast materials, with or without hardened teeth.



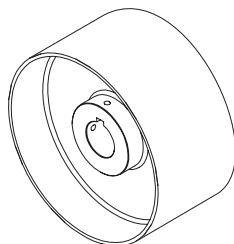
Split Sprockets are made in one piece, machined, then split into two halves after machining. The two halves can then be bolted onto the shaft without removing the shaft or the bearings from the installation. Also available in Chilled Rim.



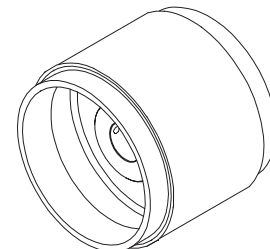
Drag Chain Sprockets are of drum type design with full width teeth. These sprockets are available plain, as shown here, or drum flanged as shown below. All types have been redesigned to provide additional wear life on the welded steel drag chains that have largely replaced malleable types.



Drum Flanged Drag Chain Sprockets have side extension flanges extending from below the root line. These flanges are used with refuse over the end of conveyors and to serve as a guard if chains jump sprockets or traction wheels.

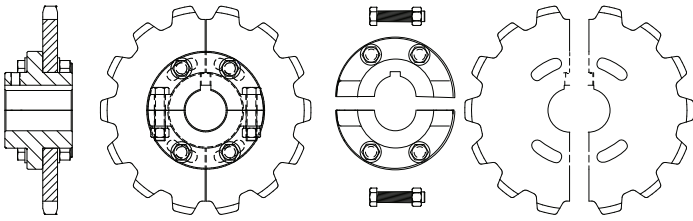


Drag Chain Traction Wheels are identical to sprockets but have no teeth. They are commonly used to turn chains at the ends of conveyors or to increase chain wrap in "S" Wrap" drive designs. They are available plain (left) or drum flanged.

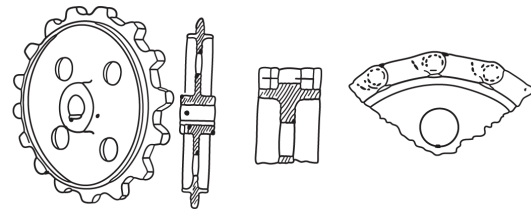


Drum Flanged Traction Wheels are used with drag chains either at the discharge end of the conveyor to guide the refuse over the end, or as a chain guard. Flanges on drag chain sprockets and traction wheels are available in many different lengths.

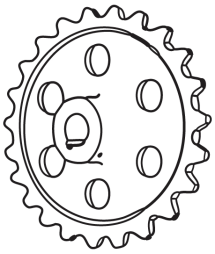
Cast Iron Sprocket Types



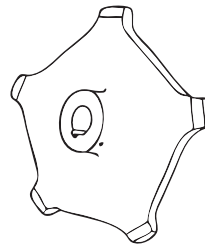
Adjustable Hub Sprockets are designed for use in multi-strand conveyors using top carriers or flights, where alignment of adjacent strands is a problem. The hub allows the chain to be moved forward or backward several inches as conditions in the conveyor require. The adjustable sprockets are available in solid or split construction.



Chainsaver Rims are short flanges below the root line of the sprocket which make contact with the sidebars of the chain. The rims help support the chain and keep the chain running on the true pitch line of the sprocket. Chainsaver Rims are particularly advantageous when used on elevator headshaft sprockets handling heavy or abrasive loads, and in sewage treatment applications where long, unsupported strands are common.



Hunting Tooth Sprockets are designed with an odd number of teeth, with the pitch of the teeth $1/2$ the pitch of the chain. This allows each tooth to contact the chain only every other revolution. Wear life of the sprocket is effectively doubled. A Chainsaver Rim is frequently added to these sprocket to give even longer life.



Drop Forged or Rivetless Chain Sprockets are of skip tooth design, since the block link of these chains is solid. Sprockets are available for all popular drop forged chains in both regular and X series.

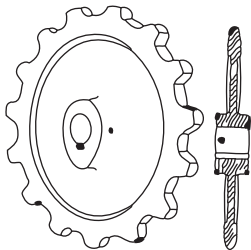


Plate Body with Cam-Shaped Hubs
All sprockets are produced with plate type bodies as shown. Few spoked sprockets are offered due to strength limitations of this type design. As space permits, many smaller sprockets are made with cam-shaped hubs, which give additional strength over the keyway, but reduces weight compared to conventional round hubs of the same diameter.

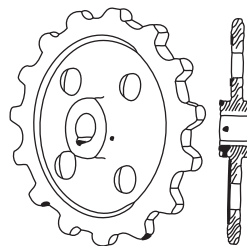
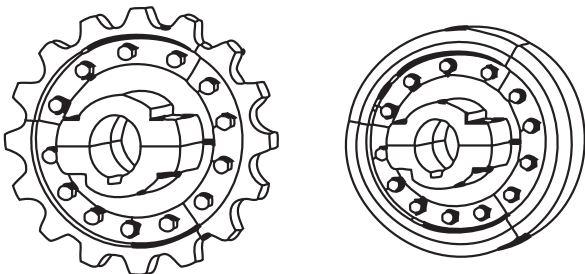
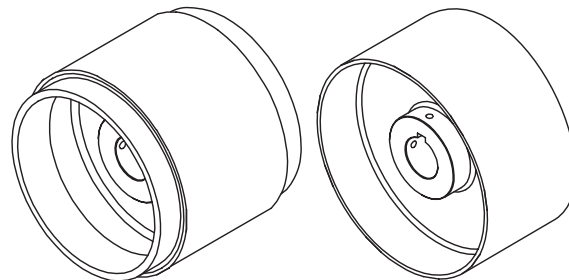


Plate body with Lightening Holes
Where space permits, larger sprockets are made with lightening holes cast through the body to reduce weight and facilitate handling. Standard round hubs are used on most larger sprockets, with diameters of hubs as appropriate according to chain type and ANSI hub specifications.



Segmental Sprockets - Martin offers segmental sprockets with either solid or split hub bodies. Segmental sprockets greatly reduce the labor costs as well as the downtime associated with replacing worn standard type sprockets. Worn segments can be replaced by simply removing and replacing segments only, eliminating the need to remove the shaft, and or bearing assemblies, as well as the need to realign the hub.

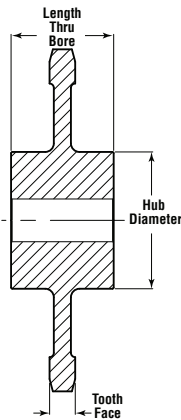


Traction Wheels - Traction Wheels are offered in solid or segmental construction. They are often used in bucket elevators and can withstand abrasive materials.

The following information should be given when ordering sprockets or traction wheels:

1. **QUANTITY** _____
(Number of sprockets required)
2. **CHAIN** _____
(Number and type to be used)
3. **NO. OF TEETH** _____
(The effective number of teeth should be specified when ordering a double duty, hunting tooth or skip tooth sprocket)
4. **PITCH DIAMETER** _____
(For traction wheels, the outside diameter should be specified in place of the pitch diameter)
5. **MATERIAL** _____
(Specify Chilled Rim if hardened teeth required)
6. **CONSTRUCTION** _____
(Standard, split or segmental construction should be specified)
7. **TYPE** _____
(Standard, hunting tooth, double duty, chain saver, etc., must be specified. Chain saver sprockets increase their life by having flanges on each side of the teeth so that the sidebar engages the flange, thereby distributing the wear over a greater area)
8. **BORE** _____
(Sprockets and traction wheels are usually furnished with specific bores)
9. **HUB STYLE** _____
(All hubs are furnished (C style) unless specified otherwise)
10. **KEYWAY AND SETSCREWS** _____
(Standard straight keyways are finished with one setscrew over the keyway and one at 90°)

Cast Iron Sprocket



55 CAST TOOTH SPROCKETS — PITCH 1.631

FOR CHAINS NO.: 55, SS55, C55L, C55D, C55B, C55A, C55

Tooth Face at Pitch Line: 0.688 — Roller Diameter: 0.718

Number of Teeth	Catalog Number	Pitch Diameter	Style	Hub Diameter	Length Thru Bore	Max. Bore	Approx. Weight (lb)
5	C55C5	2.77	C	2.00	2.00	0.94	2.0
6	C55C6	3.26	C	2.00	2.00	0.94	2.0
7	C55B7	3.76	B	2.50	2.00	1.63	3.0
8	C55B8	4.26	B	2.50	2.00	1.63	4.0
9	C55C9	4.76	C	3.00	2.00	1.94	5.0
10	C55C10	5.26	C	3.50	2.00	2.19	5.0
11	C55C11	5.77	C	4.50	3.00	2.88	6.0
12	C55C12	6.30	C	4.50	3.00	2.88	10.0
13	C55C13	6.80	C	4.50	3.00	2.88	10.0
14	C55C14	7.31	C	4.50	3.00	2.88	12.0
15	C55C15	7.83	C	4.50	3.00	2.88	13.0
16	C55C16	8.34	C	4.50	3.00	2.88	13.0
17	C55C17	8.85	C	4.50	3.00	2.88	17.0
18	C55C18	9.39	C	4.50	3.00	2.88	20.0
19	C55C19	9.92	C	4.50	3.00	2.88	20.0
20	C55C20	10.43	C	6.00	3.50	2.88	20.0
21	C55C21	10.94	C	6.00	3.50	4.00	23.0
22	C55C22	11.43	C	6.00	3.50	4.00	24.0
23	C55C23	11.97	C	6.00	3.50	4.00	29.0
24	C55C24	12.47	C	6.00	3.50	4.00	32.0
25	C55C26	13.00	C	8.00	4.00	6.00	31.0
27	C55C27	14.07	C	8.00	4.00	6.00	38.0
28	C55C28	14.54	C	8.00	4.00	6.00	42.0
29	C55C29	15.08	C	8.00	4.00	6.00	26.0
30	C55C30	15.59	C	8.00	4.00	6.00	54.0
31	C55C31	16.11	C	8.00	4.00	6.00	58.0
32	C55C32	16.63	C	8.00	4.00	6.00	63.0
34	C55C34	17.67	C	8.00	4.00	6.00	31.0
35	C55C35	18.20	C	8.00	4.00	6.00	69.0
36	C55C36	18.70	C	8.00	4.00	6.00	77.0
38	C55C38	19.75	C	8.00	4.00	6.00	35.0
40	C55C40	20.79	C	10.00	4.00	8.00	37.0
41	C55C41	21.31	C	10.00	4.00	8.00	36.0
48	C55C48	24.94	C	10.00	4.00	8.00	45.0
50	C55C50	25.98	C	10.00	4.00	8.00	47.0
54	C55C54	28.00	C	10.00	4.00	8.00	50.0

62 CAST TOOTH SPROCKETS — PITCH 1.654 CHILLED RIM

FOR CHAINS NO.: 62, 72, 362, H62

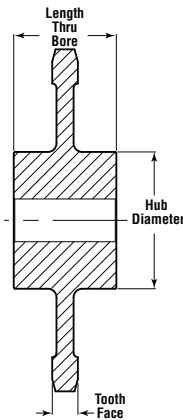
Tooth Face at Pitch Line: 0.812 — Roller Diameter: 0.812

Number of Teeth	Catalog Number	Pitch Diameter	Style	Hub Diameter	Length Thru Bore	Max. Bore	Approx. Weight (lb)
5	C62C5CR	2.81	C	1.38	1.25	.75	1.5
6	C62C6CR	3.32	C	1.75	1.25	0.94	3.0
7	C62C7CR	3.82	C	2.50	2.00	1.62	2.0
8	C62C8CR	4.32	C	3.00	2.00	1.81	4.0
9	C62C9CR	4.84	C	3.00	2.00	1.81	5.0
10	C62C10CR	5.35	C	4.00	3.00	2.50	9.0
11	C62C11	5.87	C	4.00	3.00	2.50	9.0
12	C62C12	6.39	C	4.75	3.50	2.50	7.0
13	C62C13	6.91	C	4.75	3.50	3.00	14.0
14	C62C14	7.43	C	4.75	3.50	3.00	24.0
15	C62C15	7.96	C	5.00	3.50	3.50	26.0
16	C62C16	8.48	C	5.00	3.50	3.50	25.0
17	C62C17	9.00	C	5.00	3.50	3.50	26.0
18	C62C18	9.53	C	5.00	3.50	3.50	28.0
19	C62C19	10.05	C	5.00	3.50	3.50	22.0
20	C62C20	10.57	C	5.50	4.00	4.00	24.0
21	C62C21	11.10	C	5.50	4.00	4.00	39.0
22	C62C22	11.63	C	5.50	4.00	4.00	27.0
23	C62C23	12.15	C	5.50	4.00	4.00	30.0
24	C62C24	12.67	C	5.50	4.00	4.00	36.0
25	C62C25	13.20	C	5.50	4.50	4.00	36.0
26	C62C26	13.72	C	5.50	4.50	4.00	36.0
27	C62C27	14.25	C	5.50	4.50	4.00	58.0
28	C62C28	14.77	C	5.50	4.50	4.00	60.0
29	C62C29	15.30	C	5.50	4.50	4.00	31.6
30	C62C30	15.82	C	6.00	4.50	4.50	44.0
32	C62C32	16.88	C	6.00	4.50	4.50	48.0
33	C62C33	17.44	C	6.00	4.50	4.50	50.0
34	C62C34	17.93	C	6.00	4.50	4.50	77.0
36	C62C36	18.98	C	6.00	4.50	4.50	90.0
38	C62C38	20.03	C	6.00	5.00	4.50	93.0
39	C62C39	20.55	C	6.00	5.00	4.50	61.0
40	C62C40	21.07	C	6.00	5.00	4.50	40.2
41	C62C41	21.61	C	6.00	5.00	4.50	65.0
42	C62C42	22.13	C	6.00	5.00	4.50	72.0
43	C62C43	22.66	C	8.00	5.50	6.00	74.0
45	C62C45	23.71	C	8.00	5.50	6.00	77.0
46	C62C46	24.24	C	8.00	5.50	6.00	80.0
47	C62C47	24.77	C	8.00	5.50	6.00	48.6
48	C62C48	25.29	C	8.00	5.50	6.00	83.0
49	C62C49	25.82	C	8.00	5.50	6.00	84.0
54	C62C54	28.45	C	8.00	5.50	6.00	93.0
60	C62C60	31.60	C	8.00	5.50	6.00	71.0

NOTE: Weights and Dimensions are approximate. Please consult Martin for max hub information. All Cast Sprockets available as Split Sprockets.

CHAINSAVER rims available on request.

HEAT TREAT available upon request.



67 CAST TOOTH SPROCKETS — PITCH 2.308 CHILLED RIM

FOR CHAINS NO.: 57, 67, 77, 467, 477, 967, 977, C77, H-60, SM477

Tooth Face at Pitch Line: 0.687 — Roller Diameter: 0.812

Number of Teeth	Catalog Number	Pitch Diameter	Style	Hub Diameter	Length Thru Bore	Max. Bore	Approx. Weight (lb)
5	C67C5CR	3.93	C	2.25	1.75	1.19	4.0
6	C67C6CR	4.62	C	3.00	2.00	1.81	6.0
7	C67C7CR	5.32	C	3.50	3.00	2.19	8.0
8	C67C8CR	6.03	C	4.00	3.00	2.50	10.0
9	CRC67C9	6.75	C	4.50	3.00	2.88	12.0
10	C67C10CR	7.46	C	4.50	3.00	2.88	14.0
11	C67C11CR	8.19	C	4.50	3.00	2.88	18.0
12	C67C12CR	8.92	C	4.50	3.00	2.88	20.0
13	C67C13CR	9.64	C	4.50	3.00	2.88	23.0
14	C67C14CR	10.37	C	5.00	3.00	3.50	22.0
15	C67C15CR	11.10	C	5.00	3.5	3.50	28.0
16	C67C16CR	11.83	C	5.00	3.5	3.50	30.0
17	C67C17CR	12.56	C	6.00	3.5	4.50	31.0
18	C67C18CR	13.29	C	6.00	3.5	4.50	35.0
19	C67C19CR	14.02	C	6.00	3.5	4.50	43.0
20	C67C20CR	14.75	C	6.00	4.00	4.50	51.0
21	C67C21CR	15.43	C	6.00	4.00	4.50	55.0
22	C67C22CR	16.16	C	6.00	4.00	4.50	58.0
23	C67C23CR	16.89	C	6.00	4.00	4.50	62.0
24	C67C24CR	17.68	C	6.00	4.00	4.50	67.0
25	C67C25CR	18.35	C	8.00	4.50	6.00	53.0
26	C67C26CR	19.14	C	8.00	4.50	6.00	54.0
27	C67C27CR	19.89	C	8.00	4.50	6.00	59.0
28	C67C28CR	20.61	C	8.00	4.50	6.00	34.0
30	C67C30CR	22.07	C	8.00	4.50	6.00	67.0
32	C67C32CR	23.54	C	8.00	4.50	6.00	23.0
33	C67C33CR	24.27	C	8.00	4.50	6.00	75.0
34	C67C34CR	25.00	C	8.00	4.50	6.00	48.0
35	C67C35CR	25.74	C	8.00	4.50	6.00	80.0
36	C67C36CR	26.47	C	8.00	4.50	6.00	84.0
38	C67C38CR	27.94	C	10.00	6.00	8.00	88.0
40	C67C40CR	29.40	C	10.00	6.00	8.00	94.0
44	C67C44CR	32.34	C	10.00	6.00	8.00	120.0
45	C67C45CR	33.06	C	10.00	6.00	8.00	125.0
48	C67C48CR	35.27	C	10.00	6.00	8.00	115.0
60	C67C60CR	44.08	C	10.00	6.00	8.00	148.0

NOTE: Weights and Dimensions are approximate. Please consult Martin for max hub information. All Cast Sprockets available as Split Sprockets.
CHAINS AVER rims available on request.
HEAT TREAT available upon request.

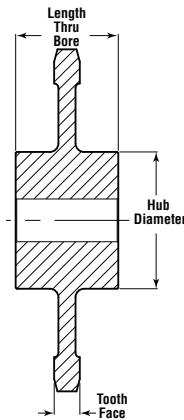
78 CAST TOOTH SPROCKETS — PITCH 2.609

FOR CHAINS NO.: 75, 78, 88, 188, 488, 433-1/2, 81X, BRH, BRH188, C188, H74, H75, H78, H78A, H78B, H78SR, H79, MSR-1288, MW188RT, MXS882, SS188, SS578

Tooth Face at Pitch Line: .937 — Roller Diameter: 0.875

Number of Teeth	Catalog Number	Pitch Diameter	Style	Hub Diameter	Length Thru Bore	Max. Bore	Approx. Weight (lb)
5	C78C5	4.44	C	2.50	2.50	1.19	5
6	C78C6	5.22	C	3.50	2.75	1.44	6
7	C78C7	6.01	C	4.00	3.00	2.44	11
8	C78C8	6.82	C	4.75	3.12	2.81	15
9	C78C9	7.63	C	5.25	3.88	3.25	16
10	C78C10	8.44	C	5.25	3.88	3.25	19
11	C78C11	9.26	C	5.25	3.88	3.25	23
12	C78C12	10.08	C	6.00	3.88	3.25	28
13	C78C13	10.90	C	6.00	4.50	3.31	36
14	C78C14	11.72	C	6.00	4.50	3.31	39
15	C78C15	12.55	C	6.00	4.50	3.31	40
16	C78C16	13.37	C	6.00	4.50	3.31	53
17	C78C17	14.20	C	6.00	4.50	3.31	55
18	C78C18	15.02	C	6.00	4.50	4.06	61
19	C78C19	15.85	C	6.50	5.38	4.06	64
20	C78C20	16.68	C	6.50	5.38	4.06	67
21	C78C21	17.50	C	6.50	5.38	4.06	79
22	C78C22	18.33	C	6.50	5.38	4.06	89
23	C78C23	19.16	C	6.50	5.38	4.06	91
24	C78C24	19.99	C	7.00	5.38	4.06	99
25	C78C25	20.81	C	7.00	5.38	4.06	107
26	C78C26	21.64	C	7.00	5.38	4.06	111
27	C78C27	22.47	C	7.00	5.38	4.06	112
28	C78C28	23.30	C	7.00	5.38	4.06	114
29	C78C29	24.05	C	7.00	5.38	4.06	116
30	C78C30	24.96	C	7.00	5.38	4.06	119
31	C78C31	25.79	C	7.00	5.38	4.06	123
32	C78C32	26.62	C	7.00	5.38	4.06	130
33	C78C33	27.38	C	7.00	5.38	4.06	136
34	C78C34	28.28	C	7.00	5.38	4.06	141
35	C78C35	29.11	C	7.00	5.38	4.06	146
36	C78C36	29.93	C	7.00	5.38	4.06	153
38	C78C38	31.60	C	7.00	5.38	4.06	162
39	C78C39	32.42	C	7.00	5.38	4.06	170
40	C78C40	33.25	C	7.25	6.75	4.62	176
41	C78C41	34.08	C	7.25	6.75	4.62	180
42	C78C42	34.91	C	7.25	6.75	4.62	193
43	C78C43	35.65	C	7.25	6.75	4.62	197
44	C78C44	36.57	C	7.25	6.75	4.62	202
45	C78C45	37.31	C	7.25	6.75	4.62	212
46	C78C46	38.23	C	7.25	6.75	4.62	221
48	C78C48	38.89	C	7.25	6.75	4.62	249
54	C78C54	44.87	C	7.25	6.75	4.62	265

Cast Iron Sprocket



95R CAST TOOTH SPROCKETS — PITCH 4.00 CHILLED RIM

FOR CHAINS NO.: 1120, 1520, 4013, 1520C, 95R, LXS4013, MSR 4013, RR1120, RS4013, SS1120

Tooth Face at Pitch Line: .687 — Roller Diameter: 1.500

Number of Teeth	Catalog Number	Pitch Diameter	Style	Hub Diameter	Length Thru Bore	Max. Bore	Approx. Weight (lb)
5	C95RC5CR	6.81	C	4.50	3.00	2.50	12.0
6	C95RC6CR	8.00	C	5.00	3.00	3.00	14.0
7	C95RC7CR	9.22	C	6.00	3.00	4.00	18.0
8	C95RC8CR	10.45	C	6.00	3.00	4.00	24.0
9	C95RC9CR	11.70	C	6.00	3.00	4.00	30.0
10	C95RC10CR	12.94	C	6.00	3.00	4.00	40.0
11	C95RC11CR	14.19	C	6.00	3.00	4.00	45.0
12	C95RC12CR	15.45	C	6.00	3.00	4.00	61.0
14	C95RC14CR	17.98	C	6.00	3.00	4.00	76.0
15	C95RC15CR	19.24	C	7.00	4.00	5.00	86.0
18	C95RC18CR	23.04	C	8.00	5.00	6.00	115.0
19	C95RC19CR	24.30	C	8.00	5.00	6.00	125.0
22	C95RC22CR	28.11	C	8.00	5.00	6.00	165.0

94R CAST TOOTH SPROCKETS — PITCH 4.00 CHILLED RIM

FOR CHAINS NO.: 4, 4019, 40SP, 94R, LXS4019, SS4

Tooth Face at Pitch Line: .750 — Roller Diameter: 1.500

Number of Teeth	Catalog Number	Pitch Diameter	Style	Hub Diameter	Length Thru Bore	Max. Bore	Approx. Weight (lb)
6	C94RC5CR	8.00	C	5.00	2.75	3.00	22.0
8	C94RC8CR	10.45	C	6.00	3.00	4.00	27.0
9	C94RC9CR	11.70	C	6.00	3.00	4.00	36.0
10	C94RC10CR	12.94	C	6.50	3.00	4.00	39.0
12	C94RC12CR	15.45	C	6.50	3.00	4.00	59.0
14	C94RC14CR	17.98	C	7.00	4.00	5.00	74.0
15	C94RC15CR	19.24	C	7.00	4.00	5.00	84.0
16	C94RC16CR	20.50	C	7.00	4.00	5.00	95.0

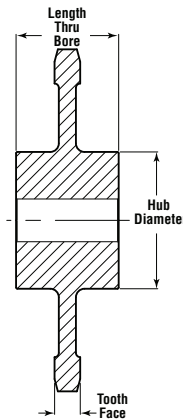
102B CAST TOOTH SPROCKETS — PITCH 4.00 CHILLED RIM

FOR CHAINS NO.: 6102B, A102B, C102B, ER102B, S102B, SBS102B, SS102B

Tooth Face at Pitch Line: 1.875 — Roller Diameter: 1.00

Number of Teeth	Catalog Number	Pitch Diameter	Style	Hub Diameter	Length Thru Bore	Max. Bore	Approx. Weight (lb)
6	C102BC6CR	8.00	C	6.00	4.00	3.94	33.0
7	C102BC7CR	9.22	C	6.00	4.00	3.94	44.0
8	C102BC8CR	10.45	C	6.50	4.00	4.44	47.0
9	C102BC9CR	11.70	C	7.00	5.00	4.56	60.0
10	C102BC10CR	12.94	C	7.00	5.00	4.56	68.0
11	C102BC11CR	14.20	C	7.00	5.00	4.56	72.0
12	C102BC12CR	15.45	C	7.00	5.00	4.56	91.0
13	C102BC13CR	16.71	C	7.00	5.00	4.56	107.0
14	C102BC14CR	17.98	C	7.00	5.00	4.56	110.0
15	C102BC15CR	19.24	C	7.00	5.00	4.56	122.0
16	C102BC16CR	20.50	C	7.00	5.00	4.56	135.0
17	C102BC17CR	21.76	C	7.00	5.00	4.56	145.0
18	C102BC18CR	23.04	C	7.00	5.00	4.56	130.0
19	C102BC19CR	24.30	C	7.00	5.00	4.50	170.0
20	C102BC20CR	25.57	C	10.00	6.00	6.00	175.0
21	C102BC21CR	26.84	C	10.00	6.00	6.00	185.0
22	C102BC22CR	28.11	C	10.00	6.00	6.00	194.0
24	C102BC24CR	30.65	C	10.00	6.00	6.00	214.0

NOTE: Weights and Dimensions are approximate. Please consult Martin for max hub information. All Cast Sprockets available as Split Sprockets. CHAINSAVER rims available on request. HEAT TREAT available upon request.



H102 CAST TOOTH SPROCKETS — PITCH 5.00

FOR CHAINS NO.: H102, WD102, WDH102

Tooth Face at Pitch Line: .625 — Roller Diameter: 1.500

Number of Teeth	Catalog Number	Pitch Diameter	Style	Hub Diameter	Length Thru Bore	Max. Bore	Approx. Weight (lb)
6	CWD102C6	10.00	C	6.00	7.25	4.00	65.0
7	CWD102C7	11.52	C	6.00	7.25	4.00	80.0
8	CWD102C8	13.07	C	6.50	7.25	4.50	122.0
8	CWD102C8F	13.07	C	6.50	7.25	4.50	160.0
9	CWD102C9	14.62	C	7.00	8.00	5.00	140.0
10	CWD102C10	16.18	C	7.00	8.00	5.00	143.0
11	CDW102C11	17.75	C	7.00	8.00	5.00	165.0
12	CDW102C12	19.32	C	7.50	8.00	5.50	212.0
13	CDW102C13	20.89	C	7.50	8.00	5.50	245.0

102.5 CAST TOOTH SPROCKETS — PITCH 4.040

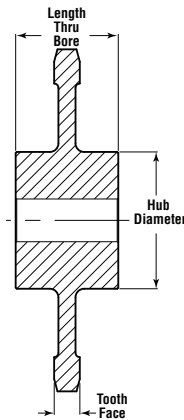
FOR CHAINS NO.: A102-1/2, C102-1/2, C102.5, ER102.5, S102-1/2, SBS102.5, SS102-1/2

Tooth Face at Pitch Line: 1.875 — Roller Diameter: 1.375

Number of Teeth	Catalog Number	Pitch Diameter	Style	Hub Diameter	Length Thru Bore	Max. Bore	Approx. Weight (lb)
6	C102.5C6	8.08	C	5.00	3.50	3.94	30.0
8	C102.5C8	10.56	C	6.00	4.00	4.44	55.0
9	C102.5C9	11.81	C	6.00	4.00	5.44	62.0
10	C102.5C10	13.07	C	6.00	4.00	5.94	62.0
11	C102.5C11	14.34	C	6.00	4.00	5.94	76.0
12	C102.5C12	15.61	C	6.00	4.00	5.94	106.0
13	C102.5C13	16.88	C	6.00	4.00	5.94	85.0
14	C102.5C14	18.16	C	6.00	4.00	5.94	94.0
15	C102.5C15	19.43	C	6.00	4.00	5.94	105.0
16	C102.5C16	20.71	C	8.00	5.00	6.00	112.0
17	C102.5C17	21.98	C	8.00	5.00	6.00	122.0
19	C102.5C19	24.55	C	8.00	5.00	6.00	140.0
20	C102.5C20	25.83	C	10.00	6.00	8.00	150.0
22	C102.5C22	28.39	C	10.00	6.00	8.00	175.0
24	C102.5C24	30.95	C	10.00	6.00	8.00	190.0
25	C102.5C25	32.23	C	10.00	6.00	8.00	210.0
26	C102.5C26	33.33	C	10.00	6.00	8.00	230.0

NOTE: Weights and Dimensions are approximate. Please consult Martin for max hub information. All Cast Sprockets available as Split Sprockets. CHAINSAVER rims available on request. HEAT TREAT available upon request.

Cast Iron Sprocket



H104 CAST TOOTH SPROCKETS — PITCH 6.000

FOR CHAINS NO.: 6104, H104, WDH104

Tooth Face at Pitch Line: 4.00 — Roller Diameter: 1.50

Number of Teeth	Catalog Number	Pitch Diameter	Style	Hub Diameter	Length Thru Bore	Max. Bore	Approx. Weight (lb)
5	CWD104C5	10.21	C	6.00	4.75	4.00	80.0
6	CWD104C6	12.00	C	6.00	4.75	4.00	91.0
7	CWD104C7	13.83	C	6.00	4.75	4.00	120.0
7	CWD104C7*		C	6.00	4.75	4.00	116.0
8	CWD104C8	15.68	C	7.50	5.00	5.00	122.0
8	CWD104C8*		C	7.50	5.00	5.00	137.0
9	CWD104C9	17.54	C	7.50	5.00	5.00	152.0
9	CWD104C9*		C	7.50	5.00	5.00	167.0
10	CWD104C10	19.42	C	8.00	5.50	6.00	160.0
10	CWD104C10*		C	8.00	5.50	6.00	175.0
11	CWD104C11	21.30	C	8.00	5.50	6.00	172.0
12	CWD104C12	23.18	C	8.00	5.50	6.00	185.0
13	CWD104C13	25.07	C	8.00	5.50	6.00	198.0

*Available Flanged - Consult Factory.

S110 CAST TOOTH SPROCKETS — PITCH 6.000

FOR CHAINS NO.: 6110, C110, C110, ER110, C110C, RR542, SBS110, SS110, WH110, WS110

Tooth Face at Pitch Line: 1.875 — Roller Diameter: 1.250

Number of Teeth	Catalog Number	Pitch Diameter	Style	Hub Diameter	Length Thru Bore	Max. Bore	Approx. Weight (lb)
6	C110C6	12.00	C	6.00	4.00	3.94	63.0
7	C110C7	13.84	C	7.00	4.00	4.50	68.0
8	C110C8	15.68	C	7.00	5.00	4.50	76.0
9	C110C9	17.54	C	7.00	5.00	4.50	83.0
10	C110C10	19.42	C	7.50	5.00	5.00	88.0
11	C110C11	21.30	C	7.50	5.00	5.00	121.0
12	C110C12	23.18	C	7.50	5.00	5.00	131.0
13	C110C13	25.07	C	7.50	5.00	5.00	152.0
14	C110C14	26.96	C	7.50	5.00	5.00	160.0
15	C110C15	28.86	C	7.50	5.00	5.00	170.0
16	C110C16	30.76	C	8.00	6.00	6.00	181.0
18	C110C18	34.55	C	8.00	6.00	6.00	206.0
19	C110C19	36.46	C	10.00	6.00	6.00	214.0
24	C110C24	45.97	C	10.00	8.00	8.00	340.0

W106 CAST TOOTH SPROCKETS — PITCH 6.000

FOR CHAINS NO.: W106 WH106HD, WH110, WR106, WR106HD

Tooth Face at Pitch Line: 1.50 — Roller Diameter: 1.25

Number of Teeth	Catalog Number	Pitch Diameter	Style	Hub Diameter	Length Thru Bore	Max. Bore	Approx. Weight (lb)
5	C106C5CR	10.15	C	6.00	4.75	4.00	30.0
8	C106C8CR	15.68	C	7.00	4.75	5.00	85.0
9	C106C9CR	17.54	C	7.00	4.75	5.00	100.0

WD110 CAST TOOTH SPROCKETS — PITCH 6.000

FOR CHAINS NO.: 6110 (DRAG), H-110, H110, WD110, WD113, WDH2210, WHD110, WS110 (PT-C), WSD110

Tooth Face at Pitch Line: 8.875 — Roller Diameter: 1.500

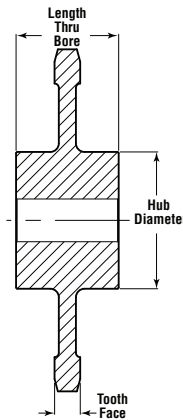
Number of Teeth	Catalog Number	Pitch Diameter	Style	Hub Diameter	Length Thru Bore	Max. Bore	Approx. Weight (lb)
5	CWD110C5	10.15	C	6.00	3.00	4.00	120.0
6	CWD110C6*	12.00	C	6.00	3.00	4.00	129.0
7	CWD110C7*	13.84	C	7.00	3.00	5.00	172.0
8	CWD110C8*	15.68	C	8.00	3.50	6.00	202.0
9	CWD110C9*	17.54	C	8.00	3.50	6.00	240.0
10	CWD110C10*	19.42	C	8.00	3.50	6.00	253.0
11	CWD110C11*	21.30	C	8.00	4.00	6.00	265.0
12	CWD110C12*	23.18	C	8.00	4.00	6.00	352.0
15	CWD110C15	28.86	C	8.00	4.00	6.00	610.0

*Available Flanged - Consult Factory.

NOTE: Weights and Dimensions are approximate. Please consult Martin for max hub information. All Cast Sprockets available as Split Sprockets.

CHAINSAVER rims available on request.

HEAT TREAT available upon request.



111SP CAST TOOTH SPROCKETS — DOUBLE PITCH 4.760 AND 7.240 — CHILLED RIM

FOR CHAINS NO.: 6111 Spec., C111 Spec., ER111SP, SS111 Spec.

Tooth Face at Pitch Line: 2.375 — Roller Diameter: 1.438

Number of Teeth	Catalog Number	Pitch Diameter	Style	Hub Diameter	Length Thru Bore	Max. Bore	Approx. Weight (lb)
8	CDP111C8CR	15.74	C	7.50	6.00	5.00	90.0
10	CDP111C10CR	19.40	C	7.50	6.00	5.00	107.0
12	CDP111C12CR	23.22	C	8.00	6.00	6.00	190.0

111 CAST TOOTH SPROCKETS — PITCH 4.760 CHILLED RIM

FOR CHAINS NO.: 6111 Spec., C111 Spec., ER111SP, SS111 Spec.

Tooth Face at Pitch Line: 2.375 — Roller Diameter: 1.438

Number of Teeth	Catalog Number	Pitch Diameter	Style	Hub Diameter	Length Thru Bore	Max. Bore	Approx. Weight (lb)
6	C111C6CR	9.52	C	7.00	4.00	4.00	64.0
7	C111C7CR	10.99	C	7.00	4.00	5.00	81.0
8	C111C8CR	12.44	C	7.50	6.00	5.06	98.0
9	C111C9CR	13.92	C	7.00	6.00	5.06	107.0
10	C111C10CR	15.40	C	7.50	6.00	5.06	122.0
11	C111C11CR	16.90	C	7.50	6.00	5.06	136.0
12	C111C12CR	18.39	C	7.50	6.00	5.06	145.0
13	C111C13CR	19.89	C	7.50	6.00	5.06	120.0
14	C111C14CR	21.39	C	8.00	6.00	6.00	125.0
15	C111C15CR	24.35	C	8.00	6.00	6.00	180.0
16	C111C16CR	24.35	C	8.00	6.00	6.00	189.0
17	C111C17CR	25.90	C	8.00	6.00	6.00	218.0
18	C111C18CR	27.41	C	8.00	6.00	6.00	228.0
20	C111C20CR	30.34	C	8.00	6.00	6.00	248.0
22	C111C22CR	33.44	C	10.00	6.00	8.00	261.0
24	C111C24CR	36.47	C	10.00	6.00	8.00	274.0

WD112 CAST TOOTH SPROCKETS — PITCH 8.00

FOR CHAINS NO.: H112, SDH112, WD112, WSD112

Tooth Face at Pitch Line: 9.000 — Roller Diameter: 1.500

Number of Teeth	Catalog Number	Pitch Diameter	Style	Hub Diameter	Length Thru Bore	Max. Bore	Approx. Weight (lb)
7	CWD112C7	18.44	C	8.00	6.00	6.938	260.0
8	CWD112C8	20.90	C	8.00	6.00	6.938	281.0
9	CWD112C9	23.39	C	8.00	6.00	6.938	308.0
10	CWD112C10	25.89	C	8.00	6.00	6.938	346.0

WD116 CAST TOOTH SPROCKETS — PITCH 8.00 ALLOY IRON

FOR CHAINS NO.: 8116, HC8116, WD116, WDH116, WDH2316, WS116, WSD116

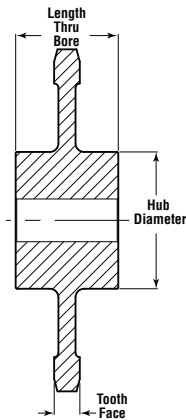
Tooth Face at Pitch Line: 9.000 — Roller Diameter: 1.500

Number of Teeth	Catalog Number	Pitch Diameter	Style	Hub Diameter	Length Thru Bore	Max. Bore	Approx. Weight (lb)
6	CWD116C6*	16.00	C	7.00	6.00	5.00	210.0
7	CWD116C7*	18.44	C	7.00	6.00	5.00	303.0
8	CWD116C8*	20.90	C	8.00	6.00	6.00	346.0
9	CWD116C9*	23.39	C	8.00	6.00	6.00	442.0
10	CDWD116C10	25.92	C	8.00	6.00	6.00	450.0

*Available Flanged - Consult Factory.

NOTE: Weights and Dimensions are approximate. Please consult Martin for max hub information. All Cast Sprockets available as Split Sprockets.
CHAINS AVER rims available on request.
HEAT TREAT available upon request.

Cast Iron Sprocket



WD119 CAST TOOTH SPROCKETS — PITCH 6.000

FOR CHAINS NO.: CC119, HC119, SD-19, SD19A

Tooth Face at Pitch Line: 3.625 — Roller Diameter: 2.000

Number of Teeth	Catalog Number	Pitch Diameter	Style	Hub Diameter	Length Thru Bore	Max. Bore	Approx. Weight (lb)
6	CWD119C6	12.00	C	6.00	5.00	4.00	95.0

WD122 CAST TOOTH SPROCKETS — PITCH 8.00 CHILLED RIM

FOR CHAINS NO.: H-122, WD122, WDH122

Tooth Face at Pitch Line: 8.750 — Roller Diameter: 2.000

Number of Teeth	Catalog Number	Pitch Diameter	Style	Hub Diameter	Length Thru Bore	Max. Bore	Approx. Weight (lb)
6	CWD122C6CR	16.00	C	7.50	5.00	6.00	180.0
6	CWD122C6CRF*	16.00	C	8.00	5.00	6.00	270.0
7	CWD122C7CR	18.44	C	8.00	5.00	6.00	210.0

* Standard Flange Width is 16.75"

WD120 CAST TOOTH SPROCKETS — PITCH 6.000

FOR CHAINS NO.: H-120, WD120, WDH120

Tooth Face at Pitch Line: 8.750 — Roller Diameter: 2.000

Number of Teeth	Catalog Number	Pitch Diameter	Style	Hub Diameter	Length Thru Bore	Max. Bore	Approx. Weight (lb)
6	CWD120C6	12.00	C	6.00	5.00	5.00	130.0
8	CWD120C8	15.68	C	6.00	5.00	5.00	250.0
9	CWD120C9	17.54	C	8.00	5.00	6.00	232.0
10	CWD120C10	19.42	C	8.00	5.00	6.00	215.0
11	CWD120C11	21.30	C	8.00	5.00	6.00	308.0

WD123 CAST TOOTH SPROCKETS — PITCH 9.00

FOR CHAINS NO.: C123, CC123, HC123, SD23, SD23A

Tooth Face at Pitch Line: 6.250 — Roller Diameter: 2.500

Number of Teeth	Catalog Number	Pitch Diameter	Style	Hub Diameter	Length Thru Bore	Max. Bore	Approx. Weight (lb)
8	CWD123C8	23.52	C	8.00	6.00	6.44	481.0

H121 CAST TOOTH SPROCKETS — PITCH 9.00

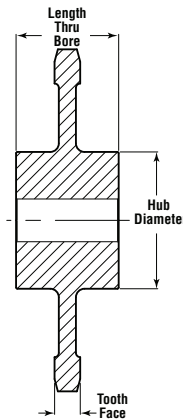
FOR CHAINS NO.: CC121, HC121, SD21, SD21A

Tooth Face at Pitch Line: 8.625 — Roller Diameter: 2.500

Number of Teeth	Catalog Number	Pitch Diameter	Style	Hub Diameter	Length Thru Bore	Max. Bore	Approx. Weight (lb)
8	CWD121C8	23.52	C	10.00	6.00	8.00	130.0

NOTE: Weights and Dimensions are approximate. Please consult Martin for max hub information. All Cast Sprockets available as Split Sprockets. CHAINSAVER rims available on request.

HEAT TREAT available upon request.



H124 CAST TOOTH SPROCKETS — PITCH 4.00 CHILLED RIM

FOR CHAINS NO.: C124, H124, H87, WH124, WHX124, WHX124HD, WR124, WS124, WSX124

Tooth Face at Pitch Line: 1.500 — Roller Diameter: 1.438

Number of Teeth	Catalog Number	Pitch Diameter	Style	Hub Diameter	Length Thru Bore	Max. Bore	Approx. Weight (lb)
7	C124C7CR	9.22	C	6.00	4.00	3.94	38.0
8	C124C8CR	10.45	C	6.50	4.25	4.94	52.0
9	C124C9CR	11.70	C	6.50	4.25	5.44	45.0
10	C124C10CR	12.94	C	7.00	4.25	5.44	73.0
11	C124C11CR	14.20	C	7.00	4.25	5.95	75.0
12	C124C12CR	15.45	C	7.00	4.25	6.00	80.0
13	C124C13CR	16.71	C	7.00	5.25	6.00	100.0
15	C124C15CR	17.98	C	7.00	5.25	6.00	103.0
16	C124C16CR	19.24	C	7.00	5.25	6.00	112.0
17	C124C17CR	20.50	C	7.00	5.25	6.00	125.0
18	C124C18CR	21.77	C	7.50	5.50	6.50	135.0
19	C124C19CR	23.04	C	7.50	5.50	6.50	145.0
20	C124C20CR	24.30	C	7.50	5.50	6.50	154.0
22	C124C22CR	25.57	C	8.00	6.00	6.50	161.0
27	C124C27CR	28.11	C	8.00	6.00	6.50	176.0
28	C124C28CR	34.46	C	10.00	6.00	8.00	240.0
30	C124C30CR	38.27	C	10.00	6.00	8.00	290.0
34	C124C34CR	43.35	C	10.00	6.00	8.00	300.0
37	C124C37CR	47.18	C	10.00	6.00	8.00	410.0

130 CAST TOOTH SPROCKETS — PITCH 4.000 CHILLED RIM

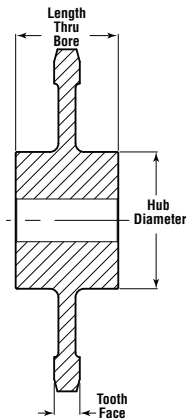
FOR CHAINS NO.: 131, 138, 130RT, 138RT, H-130, H-138, WH784, WHT130/138, WS784

Tooth Face at Pitch Line: 1.000 — Roller Diameter: 1.000

Number of Teeth	Catalog Number	Pitch Diameter	Style	Hub Diameter	Length Thru Bore	Max. Bore	Approx. Weight (lb)
5	C130C5CR	6.77	C	3.00	2.75	2.00	18.0
6	C130C6CR	8.00	C	4.50	3.00	2.50	20.0
7	C130C7CR	9.22	C	4.75	3.00	3.94	24.0
8	C130C8CR	10.45	C	5.25	3.00	4.50	27.0
9	C130C9CR	11.70	C	5.75	3.00	4.50	33.0
10	C130C10CR	12.94	C	6.00	4.00	5.00	46.0
11	C130C11CR	14.20	C	6.00	4.00	5.00	54.0
12	C130C12CR	15.45	C	6.50	4.00	5.50	73.0
13	C130C13CR	16.71	C	6.50	4.00	5.50	58.0
14	C130C14CR	17.95	C	6.50	4.00	5.50	80.0
16	C130C16CR	20.50	C	6.50	4.00	5.50	75.0
24	C130C24CR	36.47	C	10.00	6.00	8.00	274.0

NOTE: Weights and Dimensions are approximate. Please consult Martin for max hub information. All Cast Sprockets available as Split Sprockets. CHAINSAVER rims available on request. HEAT TREAT available upon request.

Cast Iron Sprocket



132 CAST TOOTH SPROCKETS — PITCH 6.050 CHILLED RIM

FOR CHAINS NO.: 6150PM, A132, A132WS, AX132, AX132WS, AZ132WS, C132, C132C, C132M, C132W1, C132W2, CR-N132, DW132, ER150, ERA150, HSB150, MBP132, MBP132C, MPB132, MPBP132C, PW132, SS150+, SXA150, W132, W157, WH132, WH132HD, WH132XHD, WH150, WH150HD, WH150XHD, WH157, WH2012, WH2855, WH3855, WHX132, WHX150, WHX150, SX150, WHX155, WHX157, WHX159, WHX2855, WHX3855, WSX132

Tooth Face at Pitch Line: 2.750 — Roller Diameter: 1.750

Number of Teeth	Catalog Number	Pitch Diameter	Style	Hub Diameter	Length Thru Bore	Max. Bore	Approx. Weight (lb)
5	C132C5CR	10.20	C	6.00	6.00	4.00	59.0
6	C132C6CR	12.10	C	6.00	6.00	4.00	100.0
8	C132C8CR*	15.81	C	8.00	7.00	6.00	163.0
9	C132C9CR*	17.69	C	8.00	7.00	6.00	165.0
10	C132C10CR*	19.57	C	8.00	7.00	6.00	186.0
11	C132C11CR*	21.47	C	8.00	8.00	6.00	215.0
12	C132C12CR*	23.38	C	8.00	8.00	6.00	258.0
13	C132C13CR	25.28	C	8.00	8.00	6.00	280.0
14	C132C14CR	27.19	C	10.00	8.00	8.00	296.0
15	C132C15CR	29.10	C	10.00	8.00	8.00	372.0
16	C132C16CR	31.01	C	10.00	8.00	8.00	302.0
18	C132C17CR	34.84	C	10.00	8.00	8.00	445.0
19	C132C18CR	36.76	C	10.00	8.00	8.00	486.0
20	C132C19CR	38.67	C	10.00	8.00	8.00	495.0

*Available Flanged - Consult Factory.

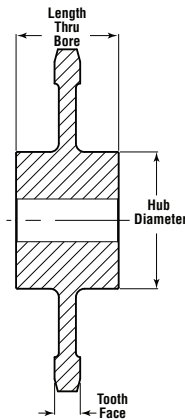
182 CAST TOOTH SPROCKETS — PITCH 3.000 CHILLED RIM

FOR CHAINS NO.: 1183, 1583, 3013, 53R, MSR-3013, RS3013, SR183

Tooth Face at Pitch Line: 0.8125 — Roller Diameter: 1.500

Number of Teeth	Catalog Number	Pitch Diameter	Style	Hub Diameter	Length Thru Bore	Max. Bore	Approx. Weight (lb)
6	C183C6CR	6.00	C	4.00	3.00	2.68	10.0
7	C183C7CR	6.92	C	4.00	3.00	2.68	14.0
8	C183C8CR	7.84	C	4.00	3.00	2.68	14.0
9	C183C9CR	8.77	C	5.00	3.00	2.94	22.0
10	C183C10CR	9.71	C	5.00	3.00	2.94	21.0
11	C183C11CR	10.65	C	5.00	3.00	2.94	30.0
12	C183C12CR	11.59	C	5.00	3.00	3.18	28.0
13	C183C13CR	12.54	C	6.00	3.00	3.49	38.0
14	C183C14CR	13.48	C	6.00	4.00	4.00	40.0
15	C183C15CR	14.43	C	6.00	4.00	4.00	43.0
16	C183C16CR	15.38	C	6.00	4.00	4.00	46.0
18	C183C18CR	17.28	C	6.00	4.00	4.00	55.0
19	C183C19CR	18.23	C	6.00	4.00	4.00	67.0
20	C183C20CR	19.18	C	8.00	4.00	6.00	65.0
24	C183C24CR	22.98	C	8.00	4.00	6.00	75.0
25	C183C25CR	23.94	C	8.00	4.00	6.00	85.0
38	C183C38CR	36.33	C	8.00	4.00	6.00	140.0

NOTE: Weights and Dimensions are approximate. Please consult Martin for max hub information. All Cast Sprockets available as Split Sprockets. CHAINSAVER rims available on request. HEAT TREAT available upon request.



188 CAST TOOTH SPROCKETS — PITCH 4.000 CHILLED RIM

FOR CHAINS NO.: 1188, 2188, 4113, 91R, LXS-4113, RS2188, RS4113. NOT for C-188 (2.609P) see W-78, SR188, SS218

Tooth Face at Pitch Line: 0.9375 — Roller Diameter: 1.750

Number of Teeth	Catalog Number	Pitch Diameter	Style	Hub Diameter	Length Thru Bore	Max. Bore	Approx. Weight (lb)
5	C188C5CR	6.78	C	4.00	3.00	2.50	14.0
6	C188C6CR	8.00	C	4.00	3.00	3.44	15.0
7	C188C7CR	9.22	C	4.00	3.00	3.68	27.0
8	C188C8CR	10.45	C	6.00	4.00	3.94	35.0
9	C188C9CR	11.70	C	6.00	4.00	3.94	32.0
10	C188C10CR	12.94	C	6.00	4.00	3.94	43.0
11	C188C11CR	14.19	C	6.50	4.00	4.44	50.0
12	C188C12CR	15.45	C	6.50	4.00	4.44	60.0
13	C188C13CR	16.71	C	8.00	5.00	5.00	36.0
15	C188C15CR	19.24	C	8.00	5.00	5.00	39.0
19	C188C19CR	24.30	C	10.00	5.00	6.00	48.0
24	C188C24CR	30.64	C	10.00	5.00	6.00	58.0

194 CAST TOOTH SPROCKETS — PITCH 4.000 CHILLED RIM

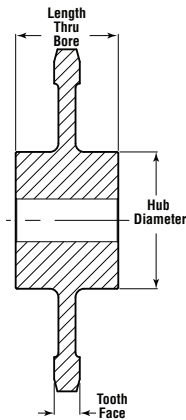
FOR CHAINS NO.: 194, 1400, 1594, 2066, 4215, 14-1/2, 83-R, 83R, GL-194, LXS-4216, S1194, SR-194, SR194, U194, US-90-R, US90R

Tooth Face at Pitch Line: 1.000 — Roller Diameter: 2.000

Number of Teeth	Catalog Number	Pitch Diameter	Style	Hub Diameter	Length Thru Bore	Max. Bore	Approx. Weight (lb)
7	C194C7CR	9.22	C	5.00	4.00	3.62	30.0
8	C194C8CR	10.45	C	5.00	4.00	3.62	36.0
9	C194C9CR	11.70	C	5.00	4.00	3.62	40.0
10	C194C10CR	12.94	C	6.00	4.00	3.62	47.0
11	C194C11CR	14.20	C	6.50	4.00	3.62	62.0
12	C194C12CR	15.46	C	6.50	4.00	3.62	55.0
13	C194C13CR	16.71	C	6.50	4.00	3.62	64.0
14	C194C14CR	17.98	C	6.50	4.00	3.62	90.0
15	C194C15CR	19.14	C	7.50	4.00	3.62	81.0
19	C194C19CR	24.30	C	7.50	4.00	3.62	121.0

NOTE: Weights and Dimensions are approximate. Please consult Martin for max hub information. All Cast Sprockets available as Split Sprockets. CHAINSAVER rims available on request. HEAT TREAT available upon request.

Cast Iron Sprocket



196 CAST TOOTH SPROCKETS — PITCH 6.000 CHILLED RIM

FOR CHAINS NO.: 196, 1114, 1116, 2126, 6018, 604R, 627R, 634R, GL-196, MSR-1116, MSR-6018, SR196, SR911, SRC196, SRD1960, SS-1114, US196R, US196RA42

Tooth Face at Pitch Line: 1.000 — Roller Diameter: 2.000

Number of Teeth	Catalog Number	Pitch Diameter	Style	Hub Diameter	Length Thru Bore	Max. Bore	Approx. Weight (lb)
5	C196C5CR	10.21	C	6.00	4.00	4.00	28.0
6	C196C6CR	12.00	C	6.00	4.00	4.00	33.0
7	C196C7CR	13.83	C	6.50	4.00	4.00	49.0
8	C196C8CR	15.68	C	6.50	5.00	4.56	84.0
9	C196C9CR	17.54	C	6.50	5.00	4.56	93.0
10	C196C10CR	19.42	C	7.00	5.00	4.56	114.0
12	C196C12CR	23.18	C	7.00	5.00	4.56	148.0
13	C196C13CR	25.07	C	7.00	5.00	4.56	119.0
14	C196C14CR	26.96	C	7.00	5.00	4.56	128.0
16	C196C16CR	30.76	C	8.00	5.00	4.56	160.0
18	C196C18CR	34.55	C	8.00	5.00	4.56	195.0
19	C196C19CR	36.45	C	8.00	5.00	4.56	210.0
25	C196C25CR	47.87	C	8.00	5.00	4.56	304.0

197 CAST TOOTH SPROCKETS — PITCH 6.000 CHILLED RIM

FOR CHAINS NO.: 614, 1130, 1617, 6018, 607R, 614R, CC5, GL-197, LXS-6238, MR-1130, RS2190 197, SR-3130, SS-2190

Tooth Face at Pitch Line: 1.125 — Roller Diameter: 2.500

Number of Teeth	Catalog Number	Pitch Diameter	Style	Hub Diameter	Length Thru Bore	Max. Bore	Approx. Weight (lb)
6	C197C6CR	12.00	C	6.00	5.00	4.75	45.0
7	C197C7CR	13.83	C	6.50	5.00	4.75	60.0
8	C197C8CR	15.68	C	6.50	5.00	4.75	75.0
9	C197C9CR	17.54	C	6.50	5.00	4.75	84.0
10	C197C10CR	19.42	C	7.00	5.00	4.75	94.0
11	C197C11CR	21.30	C	7.00	5.00	4.75	100.0
12	C197C12CR	23.18	C	7.00	5.00	4.75	125.0
15	C197C15CR	28.86	C	7.00	5.00	4.75	178.0

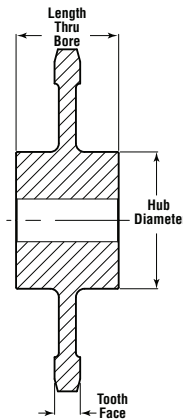
348 CAST TOOTH SPROCKETS — PITCH 3.031 CHILLED RIM

FOR CHAINS NO.: 348, N348, S348, X348

Tooth Face at Pitch Line: 0.687 — Roller Diameter: 1.0625

Number of Teeth	Catalog Number	Pitch Diameter	Style	Hub Diameter	Length Thru Bore	Max. Bore	Approx. Weight (lb)
4	C348C4CR	7.92	C	4.00	4.00	2.00	11.0
5	C348C5CR	9.71	C	4.00	4.00	2.00	19.0
6	C348C6CR	11.59	C	5.00	4.00	3.00	24.0
7	C348C7CR	13.48	C	5.00	4.00	3.00	43.0
8	C348C8CR	15.54	C	5.00	4.00	3.00	43.0
9	C348C9CR	17.28	C	7.00	4.00	5.00	51.0
10	C348C10CR	19.18	C	7.00	4.00	5.00	68.0
11	C348C11CR	21.03	C	7.00	4.00	5.00	75.0
12	C348C12CR	22.98	C	7.00	4.00	5.00	83.0
16	C348C16CR	30.60	C	7.00	4.00	5.00	120.0
19	C348C19CR	36.33	C	7.00	4.00	5.00	159.0

NOTE: Weights and Dimensions are approximate. Please consult Martin for max hub information. All Cast Sprockets available as Split Sprockets.
CHAINSAVER rims available on request.
HEAT TREAT available upon request.



458 CAST TOOTH SPROCKETS — PITCH 4.031 CHILLED RIM

FOR CHAINS NO.: 458, S458, X458

Tooth Face at Pitch Line: 0.875 — Roller Diameter: 1.380

Number of Teeth	Catalog Number	Pitch Diameter	Style	Hub Diameter	Length Thru Bore	Max. Bore	Approx. Weight (lb)
3	C458C3CR	7.95	C	4.50	5.00	2.00	14.0
4	C458C4CR	10.54	C	5.00	5.00	3.00	27.0
5	C458C5CR	13.05	C	6.00	5.00	5.06	40.0
6	C458C6CR	15.58	C	6.00	5.00	5.06	63.0
7	C458C7CR	18.12	C	7.00	5.00	5.06	70.0
8	C458C8CR	20.66	C	7.00	5.00	5.06	93.0
9	C458C9CR	23.13	C	7.50	5.00	5.06	130.0
10	C458C10CR	25.77	C	7.50	5.00	5.06	145.0
11	C458C11CR	28.33	C	7.50	5.00	5.06	193.0
12	C458C12CR	30.68	C	7.50	5.00	5.06	200.0
14	C458C14CR	35.87	C	8.00	5.00	5.06	228.0
19	C458C19CR	48.63	C	8.00	5.00	5.06	345.0

WD480 CAST TOOTH SPROCKETS — PITCH 8.000 CHILLED RIM

FOR CHAINS NO.: 480, 8480, H480, WD480, WDH2380, WDH480, WDH580, WDH680, WS480, WSD480

Tooth Face at Pitch Line: 11.125 — Roller Diameter: 2.00

Number of Teeth	Catalog Number	Pitch Diameter	Style	Hub Diameter	Length Thru Bore	Max. Bore	Approx. Weight (lb)
6	CWD480C6*	16.00	C	7.00	5.00	5.00	237.0
7	CWD480C7*	18.44	C	7.50	5.00	5.00	295.0
8	CWD480C8*	20.90	C	7.50	6.00	5.00	290.0
9	CWD480C9*	23.39	C	7.50	6.00	5.00	380.0
10◇	CWD480C10*	25.89	C	8.00	6.00	5.00	381.0
11◇	CWD480C11	28.40	C	8.00	6.00	5.00	505.0

* Available Flanged - Consult Factory.

468 CAST TOOTH SPROCKETS — PITCH 4.031 CHILLED RIM

FOR CHAINS NO.: 468, 468A, S468

Tooth Face at Pitch Line: 1.375 — Roller Diameter: 1.880

Number of Teeth	Catalog Number	Pitch Diameter	Style	Hub Diameter	Length Thru Bore	Max. Bore	Approx. Weight (lb)
4	C468C4CR	10.53	C	5.00	4.00	3.00	36.0
5	C468C5CR	13.05	C	6.00	4.00	4.00	52.0
6	C468C6CR	15.58	C	6.50	4.00	4.50	80.0
7	C468C7CR	18.12	C	6.50	4.00	4.50	92.0
8	C468C8CR	20.66	C	6.50	4.00	4.50	118.0
9	C468C9CR	23.21	C	7.00	4.00	5.00	148.0
10	C468C10CR	25.77	C	7.00	4.00	5.00	160.0
12	C468C12CR	30.88	C	7.00	4.00	5.00	240.0

463 CAST TOOTH SPROCKETS — PITCH 4.000

FOR CHAINS NO.: 483, S4830K23

Tooth Face at Pitch Line: 0.875 — Roller Diameter: 0.940

Number of Teeth	Catalog Number	Pitch Diameter	Style	Hub Diameter	Length Thru Bore	Max. Bore	Approx. Weight (lb)
8	C483C8	10.45	C	5.00	5.00	2.75	30.0
9	C483C9	11.70	C	5.00	5.00	2.75	35.0
12	C483C12	15.45	C	6.00	5.00	3.00	65.0
13	C483C13	16.72	C	6.00	5.00	3.00	70.0
19	C483C19	24.30	C	8.00	5.00	6.00	124.0

NOTE: Weights and Dimensions are approximate. Please consult Martin for max hub information. All Cast Sprockets available as Split Sprockets.

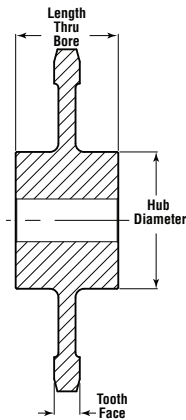
CHAINSAVER rims available on request.

HEAT TREAT available upon request.

* Standard Flange Plain Chain is 18.625" OAW; Standard Chain is 22" OAW.

◇ Special machining charges apply.

Cast Iron Sprocket



520 CAST TOOTH SPROCKETS — PITCH 2.563 CHILLED RIM

FOR CHAINS NO.: 520-RX, 520RX, A520, IS-2625, IS2625, SS-520, SS520

Tooth Face at Pitch Line: 0.875 — Roller Diameter: 1.125

Number of Teeth	Catalog Number	Pitch Diameter	Style	Hub Diameter	Length Thru Bore	Max. Bore	Approx. Weight (lb)
10	C520C10CR	8.29	C	4.00	3.00	2.00	4.0
12	C520C12CR	9.90	C	4.00	3.00	2.00	5.0
14	C520C14CR	11.53	C	5.00	3.00	2.50	34.0
18	C520C18CR	14.76	C	5.00	3.00	2.50	65.0
24	C520C24CR	19.64	C	6.00	3.00	3.00	100.0
30	C520C30CR	24.52	C	7.50	3.00	3.00	112.0
40	C520C40CR	32.67	C	7.50	3.00	3.00	165.0

625R CAST TOOTH SPROCKETS — PITCH 6.000 CHILLED RIM

FOR CHAINS NO.: 1258, 1604R, 625R, 626R, 629R, SS658

Tooth Face at Pitch Line: 1.125 — Roller Diameter: 3.000

Number of Teeth	Catalog Number	Pitch Diameter	Style	Hub Diameter	Length Thru Bore	Max. Bore	Approx. Weight (lb)
6	C625C6CR	12.00	C	6.00	4.00	4.00	62.0
8	C625C8CR	15.68	C	7.00	4.00	5.00	78.0
10	C625C10CR	19.42	C	8.00	5.00	6.00	96.0
12	C625C12CR	23.18	C	8.00	5.00	6.00	114.0
13	C625C13CR	25.07	C	8.00	5.00	6.00	123.0

531 CAST TOOTH SPROCKETS — PITCH 4.000 CHILLED RIM

FOR CHAINS NO.: 149, 531, 4328, 89R, IS4328, LXS4328, MSR4328, RS4328, S531, SS149

Tooth Face at Pitch Line: 1.187 — Roller Diameter: 2.25

Number of Teeth	Catalog Number	Pitch Diameter	Style	Hub Diameter	Length Thru Bore	Max. Bore	Approx. Weight (lb)
6	C531C6	8.00	C	5.00	4.00	2.94	34.0
8	C531C8	10.45	C	6.00	4.00	3.44	34.0
10	C531C10	12.94	C	7.00	4.00	3.94	47.0
12	C531C12	15.45	C	7.00	4.00	4.44	66.0
14	C531C14	17.99	C	7.50	4.00	5.00	75.0
15	C531C15	19.24	C	7.50	4.00	5.00	85.0
16	C531C16	20.50	C	7.50	4.00	5.00	94.0
17	C531C17	21.77	C	7.50	4.00	5.00	107.0
19	C531C19	24.30	C	7.50	4.00	5.00	120.0

667 CAST TOOTH SPROCKETS — PITCH 2.250 CHILLED RIM

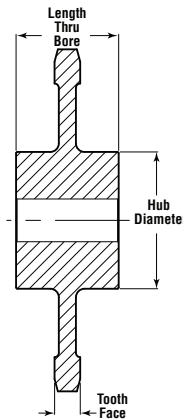
FOR CHAINS NO.: 667, J-X-K-53

Tooth Face at Pitch Line: 1.000 — Roller Diameter: 1.062

Number of Teeth	Catalog Number	Pitch Diameter	Style	Hub Diameter	Length Thru Bore	Max. Bore	Approx. Weight (lb)
6	C667C6CR	4.50	C	2.50	2.50	1.50	9.0
8	C667C8CR	5.87	C	3.00	2.75	1.50	10.0
11	C667C11CR	7.98	C	4.00	2.75	2.00	15.0

NOTE: Weights and Dimensions are approximate. Please consult Martin for max hub information. All Cast Sprockets available as Split Sprockets. CHAINSAVER rims available on request.

HEAT TREAT available upon request.



678 CAST TOOTH SPROCKETS — PITCH 6.031 CHILLED RIM

FOR CHAINS NO.: 678, S678, X678

Tooth Face at Pitch Line: 1.187 — Roller Diameter: 2.00

Number of Teeth	Catalog Number	Pitch Diameter	Style	Hub Diameter	Length Thru Bore	Max. Bore	Approx. Weight (lb)
3	C678C3CR	12.06	C	6.00	4.50	3.00	30.0
4	C678C4CR	15.72	C	6.00	4.50	3.00	77.0
5	C678C5CR	19.52	C	7.00	4.50	3.50	93.0
6	C678C6CR	23.34	C	8.00	4.50	4.00	146.0
7	C678C7CR	27.03	C	8.50	4.50	4.00	190.0
8	C678C8CR	30.83	C	8.50	4.50	4.00	240.0

698 CAST TOOTH SPROCKETS — PITCH 6.031 CHILLED RIM

FOR CHAINS NO.: 698, S698, S698HD

Tooth Face at Pitch Line: 1.375 — Roller Diameter: 2.69

Number of Teeth	Catalog Number	Pitch Diameter	Style	Hub Diameter	Length Thru Bore	Max. Bore	Approx. Weight (lb)
5	C698C5CR	19.52	C	8.00	5.00	6.00	122.0
6	C698C6CR	23.38	C	8.00	5.00	6.00	135.0
7	C698C7CR	26.96	C	8.00	5.00	6.00	200.0
8	C698C8CR	30.92	C	8.00	5.00	6.00	275.0

CS720S CAST TOOTH SPROCKETS — PITCH 6.000 CHILLED RIM

FOR CHAINS NO.: CS720S, WH720CS

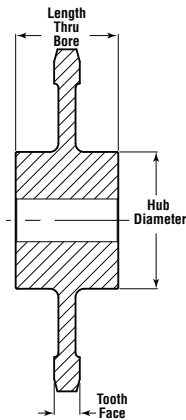
Tooth Face at Pitch Line: 1.00 — Roller Diameter: 1.44

Number of Teeth	Catalog Number	Pitch Diam.	Style	Hub Diam.	Length Thru Bore	Max. Bore	Approx. Weight (lb)
6.5P-13T	C720C13HCR*	12.89	C	6.00	4.00	3.00	65.0
8.5P-17T	C720C17HCR*	16.59	C	6.00	4.00	3.00	98.2
9	C720C9CR	17.51	C	6.00	4.00	3.00	80.0
9.5P-19T	C720C19HCR*	18.48	C	6.00	4.00	3.00	115.3
10	C720C10CR	19.42	C	6.00	4.00	3.00	95.0
10.5P-21T	C720C21HCR*	20.33	C	7.00	5.00	3.50	110.0
11	C720C11CR	21.30	C	7.00	5.00	3.50	105.0
11.5P-23T	C720C23HCR*	22.24	C	7.00	5.00	3.50	127.7
12.5P-25T	C720C25HCR*	24.12	C	7.00	5.00	3.50	141.3
13	C720C13CR	25.07	C	7.00	5.00	3.50	130.0
16	C720C16CR	30.75	C	7.00	5.00	3.50	180.0

* Regular and DoubleLife (Hunting Tooth) Designs

NOTE: Weights and Dimensions are approximate. Please consult Martin for max hub information. All Cast Sprockets available as Split Sprockets. CHAINSAVER rims available on request. HEAT TREAT available upon request.

Cast Iron Sprocket



720S

CAST TOOTH SPROCKETS — PITCH 6.000 CHILLED RIM

FOR CHAINS NO.: 720, 720S

Tooth Face at Pitch Line: 1.00 — Roller Diameter: 1.4375

Number of Teeth	Catalog Number	Pitch Diam.	Style	Hub Diam.	Length Thru Bore	Max. Bore	Approx. Weight (lb)
6	C720C6CR	12.00	C	6.00	4.00	3.00	47.0
6.5P-13T	C720C13HCR*	12.91	C	6.00	4.00	3.00	53.1
8	C720C8CR	15.68	C	6.00	4.00	3.00	70.0
8.5P-17T	C720C17HCR*	16.61	C	6.00	4.00	3.00	92.2
9	C720C9CR	17.51	C	6.00	4.00	3.00	80.0
9.5P-19T	C720C19HCR*	18.48	C	6.00	4.00	3.00	107.3
10	C720C10CR	19.42	C	6.00	4.00	3.00	95.0
10.5P-21T	C720C21HCR*	20.33	C	6.00	4.00	3.00	110.0
11	C720C11CR	21.30	C	6.00	4.00	3.00	105.0
11.5P-23T	C720C23HCR*	24.12	C	6.00	4.00	3.00	131.5
12	C720C12CR	23.18	C	7.00	5.00	3.50	120.0
12.5P-25T	C720C25HCR*	24.12	C	7.00	5.00	3.50	131.5
13	C720C13CR	25.07	C	7.00	5.00	3.50	130.0
15	C720C15CR	28.86	C	7.00	5.00	3.50	155.0
16	C720C16CR	30.75	C	7.00	5.00	3.50	180.0
19	C720C19CR	36.44	C	7.50	5.00	3.75	220.0
20	C720C20CR	38.36	C	7.50	5.00	3.75	242.0
21	C720C21CR	40.25	C	7.50	5.00	3.75	261.0
23	C720C23CR	44.06	C	7.50	5.00	3.75	318.0
25	C720C25CR	47.87	C	7.50	5.00	3.75	342.0

* Regular and DoubleLife (Hunting Tooth) Designs

A730

CAST TOOTH SPROCKETS — PITCH 6.000 CHILLED RIM

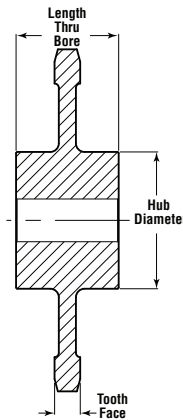
FOR CHAINS NO.: 730, A730

Tooth Face at Pitch Line: 1.125 — Roller Diameter: 1.500

Number of Teeth	Catalog Number	Pitch Diam.	Style	Hub Diam.	Length Thru Bore	Max. Bore	Approx. Weight (lb)
6	C730C6CR	12.00	C	6.00	4.00	3.00	47.9
8	C730C8CR	15.68	C	6.00	4.00	3.00	71.3
9	C730C9CR	17.54	C	6.00	4.00	3.00	85.5
9.5P-19T	C730C19HCR*	18.48	C	6.00	4.00	3.00	107.3
10P-20T	C730C20HCR*	19.42	C	6.00	4.00	3.00	115.4
11	C730C11CR	21.30	C	6.00	4.00	3.00	105.0
11.5P-23T	C730C23HCR*	22.24	C	6.00	4.00	3.00	104.5
12	C730C12CR	23.14	C	7.00	5.00	3.50	110.8
12.5P-25T	C730C25HCR*	24.12	C	7.00	5.00	3.50	117.9
13	C730C13CR	25.07	C	7.00	5.00	3.50	125.1
13.5P-27T	C730C27HCR*	26.02	C	7.00	5.00	3.50	132.5
14	C730C14CR	26.96	C	7.00	5.00	3.50	153.7
15	C730C15CR	28.86	C	7.00	5.00	3.50	170.0
16	C730C16CR	30.75	C	7.00	5.00	3.50	187.2
18	C730C18CR	34.55	C	8.00	5.00	4.00	225.2
24	C730C24CR	45.79	C	8.00	5.00	4.00	363.5
27	C730C27CR	57.68	C	8.00	5.00	4.00	408.

* Regular and DoubleLife (Hunting Tooth) Designs

NOTE: Weights and Dimensions are approximate. Please consult Martin for max hub information. All Cast Sprockets available as Split Sprockets.
CHAINSAVER rims available on request.
HEAT TREAT available upon request.



823 CAST TOOTH SPROCKETS — PITCH 6.000 CHILLED RIM

FOR CHAINS NO.: 823

Tooth Face at Pitch Line: 1.130 — Roller Diameter: 0.780

Number of Teeth	Catalog Number	Pitch Diameter	Style	Hub Diameter	Length Thru Bore	Max. Bore	Approx. Weight (lb)
8	C823C8CR	10.45	C	6.00	4.00	2.44	25.0
10	C823C10CR	12.95	C	6.00	4.00	3.18	45.0
11	C823C11CR	14.40	C	6.00	4.00	3.68	54.0
12	C823C12CR	15.46	C	6.00	4.00	3.94	56.0
13	C823C13CR	16.71	C	6.00	4.00	4.44	60.0
14	C823C14CR	17.98	C	7.00	4.00	4.94	65.0
16	C823C16CR	20.51	C	7.00	4.00	5.44	81.0
17	C823C17CR	21.77	C	7.50	4.00	5.94	86.0
18	C823C18CR	23.04	C	7.50	4.00	5.94	91.0
19	C823C19CR	24.26	C	8.00	4.00	6.00	95.0
24	C823C24CR	30.65	C	8.00	4.00	6.00	138.0

830 CAST TOOTH SPROCKETS — PITCH 6.000 CHILLED RIM

FOR CHAINS NO.: 830, 6830, 830R, HSB830, RR830, SR830

Tooth Face at Pitch Line: 1.312 — Roller Diameter: 1.156

Number of Teeth	Catalog Number	Pitch Diam.	Style	Hub Diam.	Length Thru Bore	Max. Bore	Approx. Weight (lb)
6	C830C6CR	12.00	C	6.00	4.00	4.00	58.5
8	C830C8CR	15.65	C	7.00	4.00	5.00	83.0
9	C830C9CR	17.54	C	7.00	4.00	5.00	95.0
10	C830C10CR	19.42	C	7.00	4.00	5.00	102.0
11	C830C11CR	21.20	C	7.00	4.00	5.00	105.0
11.5 -23T	C830C23HCR*	22.21	C	7.50	5.00	5.50	125.0
12	C830C12CR	23.18	C	7.50	5.00	5.50	121.0
13	C830C13CR	25.07	C	8.50	5.00	6.00	142.0
15	C830C15CR	28.86	C	8.50	5.00	6.00	168.0
16	C830C16CR	30.75	C	8.50	5.00	6.00	180.0

* Hunting Tooth

825 CAST TOOTH SPROCKETS — PITCH 4.000 CHILLED RIM

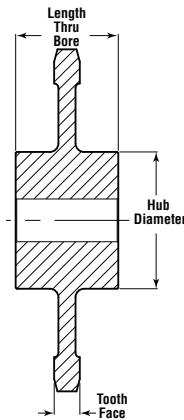
FOR CHAINS NO.: 825, SR825

Tooth Face at Pitch Line: 1.250 — Roller Diameter: 1.156

Number of Teeth	Catalog Number	Pitch Diameter	Style	Hub Diameter	Length Thru Bore	Max. Bore	Approx. Weight (lb)
10	C825C10CR	12.94	C	6.00	4.00	3.00	58.0
11	C825C11CR	14.20	C	6.00	4.00	3.00	65.0
12	C825C12CR	15.45	C	6.00	4.00	3.00	78.0
13	C825C13CR	16.71	C	6.00	4.00	3.00	82.0
14	C825C14CR	17.98	C	8.00	4.00	3.00	94.0
15	C825C15CR	19.24	C	8.00	4.00	4.00	112.0
16	C825C16CR	20.50	C	8.00	4.00	4.00	115.0
19	C825C19CR	24.30	C	8.00	4.00	4.00	140.0

NOTE: Weights and Dimensions are approximate. Please consult Martin for max hub information. All Cast Sprockets available as Split Sprockets. CHAINSAVER rims available on request. HEAT TREAT available upon request.

Cast Iron Sprocket



844 CAST TOOTH SPROCKETS — PITCH 6.000 CHILLED RIM

FOR CHAINS NO.: 844, 6844, 6844M, 844R, HSB844, HSB844S, S844, SBS844, SR844

Tooth Face at Pitch Line: 2.125 — Roller Diameter: 1.190

Number of Teeth	Catalog Number	Pitch Diameter	Style	Hub Diameter	Length Thru Bore	Max. Bore	Approx. Weight (lb)
8	C844C8CR	15.88	C	7.00	5.00	5.00	94.0
9	C844C9CR	17.54	C	7.00	5.00	5.00	112.0
10	C844C10CR	19.42	C	7.00	5.00	5.00	125.0
11	C844C11CR	21.30	C	7.00	5.00	5.00	140.0
12	C844C12CR	23.18	C	8.00	6.00	6.00	160.0
13	C844C13CR	25.07	C	8.00	6.00	6.00	171.0
15	C844C15CR	28.86	C	8.00	6.00	6.00	200.0
16	C844C16CR	30.75	C	8.00	6.00	6.00	217.0
19	C844C19CR	36.45	C	8.00	6.00	6.00	275.0

E922 CAST TOOTH SPROCKETS — PITCH 6.000 CHILLED RIM

FOR CHAINS NO.: 1751, ER922, MRS927, SS927

Tooth Face at Pitch Line: 1.625 — Roller Diameter: 3.500

Number of Teeth	Catalog Number	Pitch Diameter	Style	Hub Diameter	Length Thru Bore	Max. Bore	Approx. Weight (lb)
6	CE922C6CR	18.00	C	8.00	6.00	5.94	112.0
8	CE922C8CR	23.52	C	8.00	6.00	5.94	170.0

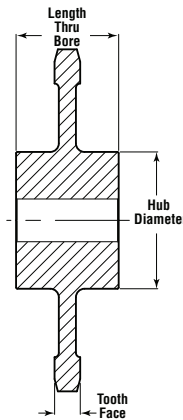
856 CAST TOOTH SPROCKETS — PITCH 6.000 CHILLED RIM

FOR CHAINS NO.: 844, 6844, 6844M, 844R, HSB844, HSB844S, S844, SBS844, SBS844, SR844

Tooth Face at Pitch Line: 2.125 — Roller Diameter: 1.190

Number of Teeth	Catalog Number	Pitch Diameter	Style	Hub Diameter	Length Thru Bore	Max. Bore	Approx. Weight (lb)
7	C856C7	13.83	C	6.50	5.00	4.75	122.0
8	C856C8	15.68	C	6.50	5.00	4.75	130.0
10	C856C10	19.42	C	7.00	5.00	4.75	200.0
11	C856C11	21.30	C	7.00	5.00	4.75	230.0
12	C856C12	23.18	C	7.00	5.50	5.00	245.0
13	C856C13	25.07	C	7.50	5.50	5.00	260.0
14	C856C14	26.96	C	7.50	5.50	5.00	285.0
15	C856C15	28.86	C	7.50	5.50	5.00	300.0

NOTE: Weights and Dimensions are approximate. Please consult Martin for max hub information. All Cast Sprockets available as Split Sprockets.
CHAINSAVER rims available on request.
HEAT TREAT available upon request.



F933 CAST TOOTH SPROCKETS — PITCH 9.000 CHILLED RIM

FOR CHAINS NO.: 933, B964R, E933, ER933, F-933, F929, F932, F933, F940, FB40, FR933, RS933F, RS933P, SS932, SS933, SS940

Tooth Face at Pitch Line: 1.250 — Roller Diameter: 4.000

Number of Teeth	Catalog Number	Pitch Diameter	Style	Hub Diameter	Length Thru Bore	Max. Bore	Approx. Weight (lb)
6	CF933C6CR	18.00		8.00	8.00	5.94	93.0
7	CF933C7CR	20.74		8.00	8.00	5.94	120.0
8	CF933C8CR	23.52		8.00	8.00	5.94	152.0

B963R CAST TOOTH SPROCKETS — PITCH 9.000 CHILLED RIM

FOR CHAINS NO.: 809, 925R, B963R, E931, F922, F930, FR922, SS4002, SS922, SS930

Tooth Face at Pitch Line: 1.125 — Roller Diameter: 3.500

Number of Teeth	Catalog Number	Pitch Diameter	Style	Hub Diameter	Length Thru Bore	Max. Bore	Approx. Weight (lb)
6	CB963CR6CR	18.00	C	6.00	6.00	2.93	74.0
8	CB963CR8CR	23.52	C	8.00	6.00	3.44	150.0
9	CB963CR9CR	26.31	C	8.00	6.00	3.44	160.0
10	CB963CR10CR	29.12	C	8.00	6.00	3.44	175.0
11	CB963CR11CR	31.95	C	8.00	6.00	4.00	181.0
12	CB963CR12CR	34.77	C	8.00	6.00	4.00	195.0

951 CAST TOOTH SPROCKETS — PITCH 9.000 CHILLED RIM

FOR CHAINS NO.: 1734, 1906, 2183, 2184, 1131R, 126C, 126CMR, 156CMR, 2184AC, 2184R, 6 Spec., 626R, 631R, F2183, LXS6438, MR126C, MR156C, S1131, S951, SS1131, SS2184, SS314, SS951, U1131

Tooth Face at Pitch Line: 1.062 — Roller Diameter: 3.00

Number of Teeth	Catalog Number	Pitch Diameter	Style	Hub Diameter	Length Thru Bore	Max. Bore	Approx. Weight (lb)
6	C951C6CR	12.00	C	6.00	6.00	3.94	62.0
8	C951C8CR	15.68	C	6.00	6.00	3.94	78.0
9	C951C9CR	17.54	C	6.00	6.00	3.94	92.0
12	C951C12CR	23.18	C	8.00	6.00	4.44	153.0
13	C951C13CR	25.03	C	8.00	6.00	4.44	175.0
14	C951C14CR	26.96	C	8.00	6.00	4.44	190.0
16	C951C16CR	30.75	C	8.00	6.00	4.44	225.0
25	C951C25CR	47.87	C	8.00	6.00	4.44	350.0

D963R CAST TOOTH SPROCKETS — PITCH 9.000 CHILLED RIM

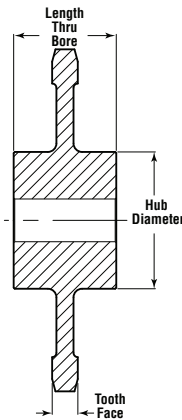
FOR CHAINS NO.: D-963R

Tooth Face at Pitch Line: 1.750 — Roller Diameter: 3.500

Number of Teeth	Catalog Number	Pitch Diameter	Style	Hub Diameter	Length Thru Bore	Max. Bore	Approx. Weight (lb)
8	CD963C8CR	23.52	C	10.00	8.00	6.44	170.0
9	CD963C9CR	26.31	C	10.00	8.00	6.44	182.0
10	CD963C10CR	29.12	C	10.00	8.00	6.44	198.0
11	CD963C11CR	31.95	C	10.00	8.00	6.44	215.0
12	CD963C12CR	34.77	C	10.00	8.00	6.44	230.0

NOTE: Weights and Dimensions are approximate. Please consult Martin for max hub information. All Cast Sprockets available as Split Sprockets. CHAINSAVER rims available on request. HEAT TREAT available upon request.

Cast Iron Sprocket



E963R CAST TOOTH SPROCKETS — PITCH 9.000 CHILLED RIM

FOR CHAINS NO.: E-963R

Tooth Face at Pitch Line: 1.250 — Roller Diameter: 4.000

Number of Teeth	Catalog Number	Pitch Diameter	Style	Hub Diameter	Length Thru Bore	Max. Bore	Approx. Weight (lb)
8	CE963C8	23.52	C	10.00	8.00	6.44	152.0
9	CE963C9	26.31	C	10.00	8.00	6.44	164.0
10	CE963C10	29.12	C	10.00	8.00	6.44	179.0
11	CE963C11	31.95	C	10.00	8.00	6.44	194.0
12	CE963C12	34.77	C	10.00	8.00	6.44	224.0

F963R CAST TOOTH SPROCKETS — PITCH 9.000 CHILLED RIM

FOR CHAINS NO.: F-963R (Hitachi)

Tooth Face at Pitch Line: 1.250 — Roller Diameter: 4.000

Number of Teeth	Catalog Number	Pitch Diameter	Style	Hub Diameter	Length Thru Bore	Max. Bore	Approx. Weight (lb)
6	CF963C8	18.00	C	8.00	6.00	6.00	80.0
8	CF963C9	23.52	C	8.00	6.00	6.00	80.0

998 CAST TOOTH SPROCKETS — PITCH 9.031 CHILLED RIM

FOR CHAINS NO.: 998, S998, SS5998

Tooth Face at Pitch Line: 1.375 — Roller Diameter: 2.690

Number of Teeth	Catalog Number	Pitch Diameter	Style	Hub Diameter	Length Thru Bore	Max. Bore	Approx. Weight (lb)
4	C197C6CR	23.53	C	9.00	6.00	6.44	195.0
5	C197C7CR	29.14	C	9.00	6.00	6.44	258.0
6	C197C8CR	34.81	C	9.00	6.00	6.44	325.0

1030 CAST TOOTH SPROCKETS — PITCH 3.075 CHILLED RIM

FOR CHAINS NO.: 1030, 1037, 1359, CHAMP 3, JS-1030, MSR-1539, MXS-1031, MXS-3075, MXS-40, R1033, R1035, R1037, ROA1031, ROA1032, ROA40 HYPER, RS1539, CHAMP3, SJLR1037, SS40, SS554, US-1030

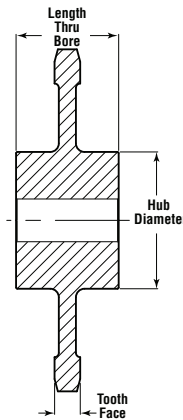
Tooth Face at Pitch Line: 1.250 — Roller Diameter: 1.250

Number of Teeth	Catalog Number	Pitch Diameter	Style	Hub Diameter	Length Thru Bore	Max. Bore	Approx. Weight (lb)
6	C1030C6CR	6.15	C	3.00	3.00	2.44	21.0
8	C1030C8CR	8.04	C	4.00	4.00	2.44	24.0
9	C1030C9CR	8.99	C	4.00	4.00	2.44	44.0
10	C1030C10CR	9.95	C	5.00	4.00	3.44	43.0
11	C1030C11CR	10.92	C	5.00	4.00	3.44	51.0
12	C1030C12CR	11.88	C	5.00	4.00	3.44	50.0
13	C1030C13CR	12.85	C	5.00	4.00	3.44	64.0
14	C1030C14CR	13.82	C	5.00	4.00	3.44	73.0
15	C1030C15CR	14.79	C	6.00	4.00	3.94	76.0
16	C1030C16CR	15.76	C	6.00	4.00	3.94	82.0
17	C1030C17CR	16.73	C	6.00	4.00	3.94	100.0
18	C1030C18CR	17.71	C	6.00	4.00	3.94	105.0
19	C1030C19CR	18.68	C	6.00	4.00	3.94	112.0
20	C1030C20CR	19.66	C	6.00	4.00	3.94	100.0
21	C1030C21CR	20.63	C	7.50	5.00	4.88	105.0
22	C1030C22CR	21.61	C	7.50	5.00	4.88	130.0
23	C1030C23CR	22.57	C	7.50	5.00	4.88	132.0
24	C1030C24CR	23.56	C	7.50	5.00	4.88	145.0
26	C1030C26CR	25.51	C	7.50	5.00	4.88	148.0
27	C1030C27CR	26.49	C	7.50	5.00	4.88	165.0
28	C1030C28CR	27.46	C	7.50	5.00	4.88	171.0
30	C1030C30CR	29.42	C	8.00	5.00	4.94	180.0
31	C1030C31CR	30.39	C	8.00	5.00	4.94	189.0
32	C1030C32CR	31.37	C	8.00	5.00	4.94	193.0
33	C1030C33CR	32.35	C	8.00	5.00	4.94	215.0
34	C1030C34CR	33.33	C	8.00	5.00	4.94	217.0
35	C1030C35CR	34.31	C	9.50	6.50	5.88	220.0
36	C1030C36CR	35.28	C	9.50	6.50	5.88	229.0
37	C1030C37CR	36.26	C	9.50	6.50	5.88	234.0
38	C1030C38CR	37.24	C	9.50	6.50	5.88	252.0
39	C1030C39CR	38.25	C	9.50	6.50	5.88	250.0
40	C1030C40CR	39.19	C	9.50	6.50	5.88	261.0
42	C1030C42CR	41.15	C	9.50	6.50	5.88	300.0
44	C1030C44CR	43.10	C	9.50	6.50	5.88	321.0
46	C1030C46CR	45.06	C	9.50	6.50	5.88	330.0
48	C1030C48CR	47.02	C	10.00	6.50	5.88	600.0
55	C1030C55CR	53.86	C	10.00	6.50	6.88	782.0

NOTE: Weights and Dimensions are approximate. Please consult Martin for max hub information. All Cast Sprockets available as Split Sprockets.

CHAINSAVER rims available on request.

HEAT TREAT available upon request.



1113 CAST TOOTH SPROCKETS — PITCH 4.040 CHILLED RIM

FOR CHAINS NO.: 3420, A3420, B3420, R02113, RS1113, SR3113, SS1113, SS60

Tooth Face at Pitch Line: 1.125 — Roller Diameter: 2.00

Number of Teeth	Catalog Number	Pitch Diameter	Style	Hub Diameter	Length Thru Bore	Max. Bore	Approx. Weight (lb)
6	C1113C6CR	8.08	C	4.00	3.00	2.44	24.0
8	C1113C8CR	10.56	C	4.00	4.00	2.94	38.0
9	C1113C9CR	11.81	C	5.00	4.00	3.18	40.0
10	C1113C10CR	13.07	C	5.00	4.00	3.68	45.0
11	C1113C11CR	14.34	C	5.00	5.00	3.94	50.0
12	C1113C12CR	15.61	C	6.00	5.00	4.44	60.0
13	C1113C13CR	16.88	C	6.00	5.00	4.94	68.0
14	C1113C14CR	18.16	C	6.00	5.00	4.94	85.0
16	C1113C16CR	20.71	C	6.00	5.00	4.94	95.0
17	C1113C17CR	21.99	C	6.00	5.00	4.94	104.0
18	C1113C18CR	23.67	C	8.00	6.00	4.94	110.0
24	C1113C24CR	30.95	C	8.00	6.00	4.94	178.0

1120 CAST TOOTH SPROCKETS — PITCH 4.000 CHILLED RIM

FOR CHAINS NO.: 1120 (TBL 13-47), 2761, 4, 40SP, LXS 4019, RR1120 (TBL 13-14 R95), RS4029, SS4

Tooth Face at Pitch Line: 0.750 — Roller Diameter: 1.500

Number of Teeth	Catalog Number	Pitch Diameter	Style	Hub Diameter	Length Thru Bore	Max. Bore	Approx. Weight (lb)
5	C1120C5CR	6.81	C	3.50	3.00	2.18	12.0
6	C1120C6CR	8.00	C	4.00	3.00	2.44	23.0
7	C1120C7CR	9.22	C	4.50	3.00	3.68	72.0
8	C1120C8CR	10.45	C	4.50	3.00	3.68	29.0
9	C1120C9CR	11.70	C	5.00	3.00	3.94	38.0
10	C1120C10CR	12.94	C	5.00	4.00	3.94	40.0
11	C1120C11CR	14.19	C	6.00	4.00	4.25	50.0
12	C1120C12CR	15.45	C	6.00	4.00	4.25	65.0
14	C1120C14CR	17.98	C	6.00	4.00	4.25	77.0
15	C1120C15CR	19.24	C	6.00	4.00	4.25	86.0
16	C1120C16CR	20.50	C	8.00	5.00	6.00	97.0
18	C1120C18CR	23.04	C	8.00	5.00	6.00	115.0
19	C1120C19CR	24.30	C	8.00	5.00	6.00	125.0
22	C1120C22CR	28.11	C	8.00	5.00	6.00	165.0
24	C1120C24CR	30.65	C	8.00	5.00	6.00	190.0
31	C1120C31CR	39.54	C	9.50	6.00	7.00	244.0
35	C1120C35CR	44.62	C	9.50	6.00	7.00	322.0

1131 CAST TOOTH SPROCKETS — PITCH 6.000 CHILLED RIM

FOR CHAINS NO.: 2183, 6SP, A2184, RS1131

Tooth Face at Pitch Line: 1.250 — Roller Diameter: 3.000

Number of Teeth	Catalog Number	Pitch Diameter	Style	Hub Diameter	Length Thru Bore	Max. Bore	Approx. Weight (lb)
6	C1131C6CR	12.00	C	6.00	5.00	3.94	62.0
8	C1131C8CR	15.68	C	6.00	5.00	3.94	78.0
9	C1131C9CR	17.54	C	6.00	5.00	3.95	120.0
12	C1131C12CR	23.18	C	7.00	6.00	4.44	153.0
13	C1131C13CR	25.03	C	7.00	6.00	4.94	175.0
14	C1131C14CR	26.96	C	8.00	6.00	5.00	190.0
16	C1131C16CR	30.75	C	8.00	6.00	5.00	225.0
24	C1131C24CR	47.87	C	8.00	6.00	5.00	350.0

F1222 CAST TOOTH SPROCKETS — PITCH 12.000 CHILLED RIM

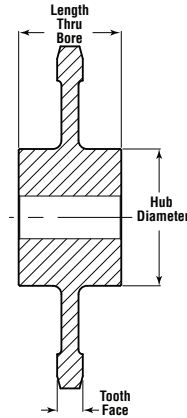
FOR CHAINS NO.: A1263, B1263R, FR1222, SS1222

Tooth Face at Pitch Line: 1.000 — Roller Diameter: 4.500

Number of Teeth	Catalog Number	Pitch Diameter	Style	Hub Diameter	Length Thru Bore	Max. Bore	Approx. Weight (lb)
6	CF1222C6CR	24.00	C	7.50	5.00	5.94	143.0
8	CF1222C8CR	31.36	C	8.00	5.00	5.94	210.0

NOTE: Weights and Dimensions are approximate. Please consult Martin for max hub information. All Cast Sprockets available as Split Sprockets. CHAINSAVER rims available on request. HEAT TREAT available upon request.

Cast Iron Sprocket



2180 CAST TOOTH SPROCKETS — PITCH 6.000 CHILLED RIM

FOR CHAINS NO.: 530, 1126, 1212, 1670, 2180, 628R, A1670, B1670

Tooth Face at Pitch Line: 1.125 — Roller Diameter: 2.250

Number of Teeth	Catalog Number	Pitch Diameter	Style	Hub Diameter	Length Thru Bore	Max. Bore	Approx. Weight (lb)
6	C2180C6CR	12.00	C	6.00	5.00	4.00	50.0
8	C2180C8CR	15.68	C	6.00	5.00	4.00	64.0
16	C2180C16CR	30.76	C	8.00	6.00	6.00	200.0
20	C2180C20CR	38.36	C	10.00	6.00	8.00	260.0

9250 CAST TOOTH SPROCKETS — PITCH 2.500 CHILLED RIM

FOR CHAINS NO.: SM120

Tooth Face at Pitch Line: 0.750 — Roller Diameter: 1.130

Number of Teeth	Catalog Number	Pitch Diameter	Style	Hub Diameter	Length Thru Bore	Max. Bore	Approx. Weight (lb)
6	C9250C6CR	5.00	C	3.00	2.75	1.50	5.0
7	C9250C6CR	5.76	C	3.00	2.75	1.50	9.0
8	C9250C6CR	6.53	C	4.00	2.75	2.00	10.0
10	C9250C6CR	8.09	C	4.00	3.00	2.50	13.0
11	C9250C6CR	8.87	C	4.00	3.00	2.50	16.0
12	C9250C6CR	9.66	C	4.00	3.00	2.50	18.0
14	C9250C6CR	11.24	C	6.00	3.00	3.00	23.0
15	C9250C6CR	12.03	C	6.00	3.00	3.00	28.0
16	C9250C6CR	12.81	C	6.00	3.00	3.00	30.0

1240 CAST TOOTH SPROCKETS — PITCH 4.063 CHILLED RIM

FOR CHAINS NO.: 1240, 1241, 1244, IS-4106, IS-4110, LXS1242, R1248, ROA124, ROA1242, SS124

Tooth Face at Pitch Line: 1.750 — Roller Diameter: 1.750

Number of Teeth	Catalog Number	Pitch Diameter	Style	Hub Diameter	Length Thru Bore	Max. Bore	Approx. Weight (lb)
6	C1240C6CR	8.13	C	4.00	4.00	2.31	30.0
7	C1240C7CR	9.36	C	5.25	4.75	3.25	39.0
8	C1240C8CR	10.82	C	6.50	5.00	4.06	52.0
9	C1240C9CR	11.88	C	6.50	5.00	4.06	61.0
10	C1240C10CR	13.15	C	6.50	5.00	4.06	69.0
11	C1240C11CR	14.42	C	6.50	5.00	4.06	78.0
12	C1240C12CR	15.70	C	7.00	6.00	4.56	96.0
13	C1240C13CR	16.98	C	7.00	6.00	4.56	102.0
14	C1240C14CR	18.26	C	7.00	6.00	4.56	112.0
15	C1240C15CR	19.54	C	7.00	6.00	4.56	122.0
16	C1240C16CR	20.82	C	8.00	6.25	5.31	140.0
17	C1240C17CR	22.11	C	8.00	6.25	5.31	142.0
18	C1240C18CR	23.40	C	8.00	6.25	5.31	161.0
19	C1240C19CR	24.68	C	8.00	6.25	5.31	175.0
21	C1240C21CR	27.26	C	8.00	6.25	5.31	210.0
22	C1240C22CR	28.55	C	8.00	6.25	5.31	218.0
24	C1240C24CR	31.12	C	8.00	6.25	5.31	240.0
25	C1240C25CR	33.42	C	9.00	6.25	6.06	250.0
28	C1240C28CR	36.29	C	9.00	6.25	6.06	310.0
29	C1240C29CR	37.58	C	9.00	6.75	6.06	330.0
30	C1240C30CR	38.87	C	10.00	6.75	7.13	346.0
32	C1240C32CR	41.45	C	10.00	6.75	7.13	378.0
34	C1240C34CR	44.03	C	10.00	6.75	7.13	402.0
37	C1240C37CR	47.90	C	11.00	7.75	7.13	471.0

4050 CAST TOOTH SPROCKETS — PITCH 12.000 CHILLED RIM

FOR CHAINS NO.: RS4850, SS1265R

Tooth Face at Pitch Line: 2.000 — Roller Diameter: 3.000

Number of Teeth	Catalog Number	Pitch Diameter	Style	Hub Diameter	Length Thru Bore	Max. Bore	Approx. Weight (lb)
8	C4850C8CR	31.43	C	10.00	6.00	6.00	220.0

NOTE: Weights and Dimensions are approximate. Please consult Martin for max hub information. All Cast Sprockets available as Split Sprockets.

CHAINSAVER rims available on request.

HEAT TREAT available upon request.

Keyseating, Keys and Setscrews

All Martin bored-to-size Cast Iron Sprockets include a keyway and two setscrews. All parts are shipped less key stock. Keyway and setscrew sizes are supplied according to the table below, unless specified. Our standard setscrew locations are one over the keyway and one at 90 degrees.

Standard Keyways and Setscrews

Bore (Inches)	Keyway Width × Depth	Diameter of Screw	Bore (Inches)	Keyway Width × Depth	Diameter of Screw
0.50 to 0.56	0.13 × 0.06	#10	2.31 to 2.75	0.63 × 0.31	0.63
0.63 to 0.88	0.19 × 0.09	0.25	2.81 to 3.25	0.75 × 0.38	0.63
0.94 to 1.25	0.25 × 0.13	0.31	3.31 to 3.75	0.88 × 0.44	0.75
1.31 to 1.38	0.31 × 0.16	0.38	3.81 to 4.50	1.00 × 0.50	0.75
1.44 to 1.75	0.38 × 0.19	0.38	4.56 to 5.50	1.25 × 0.63	0.88
1.81 to 2.25	0.50 × 0.25	0.50	5.56 to 6.50	1.50 × 0.75	1.00