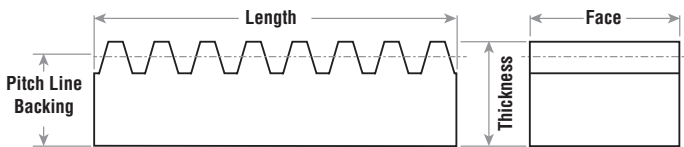
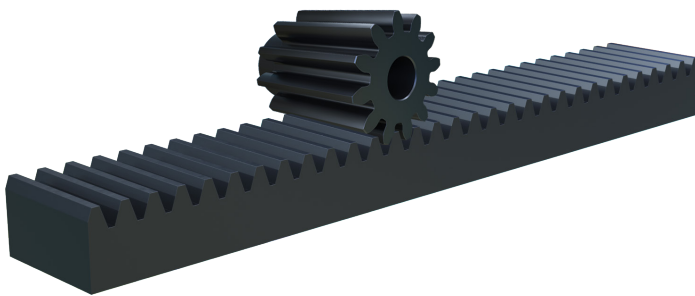


Machined Gear Rack



Martin rack is made from low carbon cold drawn steel. It is available in 14½° and 20° pressure angle in 2, 4, and 6 foot lengths. Allowance is made for cutting and machining. Pinions to run with the rack may be selected from the spur gear section of the catalog. Special rack can be supplied in other materials, sizes, and pitches.



**Rack in lengths up to 12'
available on request**

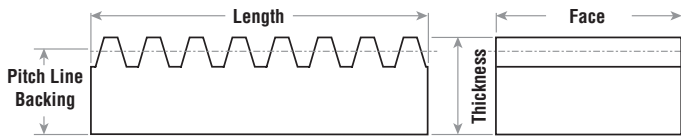
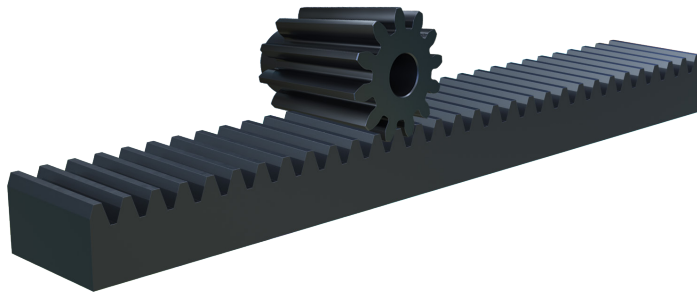
Standard Face Width Steel — 14½° & 20° Pressure Angle

Part Number		Pitch	Face Width	Overall Thickness	Pitch Line Backing	App. Wt. lb/pc
14½° P.A.	20° P.A.					
R3x2	TR3x2	3	3	1 1/2	1.167	24.00
R3x4	TR3x4	3	3	1 1/2	1.167	48.00
R3x6	TR3x6	3	3	1 1/2	1.167	72.00
R4x2	TR4x2	4	2	1 1/2	1.250	17.40
R4x4	TR4x4	4	2	1 1/2	1.250	34.80
R4x6	TR4x6	4	2	1 1/2	1.250	52.20
RA4x2		4	2	2	1.750	23.60
RA4x4		4	2	2	1.750	47.20
RA4x6		4	2	2	1.750	70.80
R5x2	TR5x2	5	1 3/4	1 1/4	1.050	12.80
R5x4	TR5x4	5	1 3/4	1 1/4	1.050	25.60
R5x6	TR5x6	5	1 3/4	1 1/4	1.050	38.40
RA5x2		5	1 3/4	1 1/2	1.300	16.00
RA5x4		5	1 3/4	1 1/2	1.300	32.00
RA5x6		5	1 3/4	1 1/2	1.300	48.00
R6x2		6	1 1/2	1	0.833	8.60
R6x4		6	1 1/2	1	0.833	17.20
R6x6		6	1 1/2	1	0.833	25.80
RA6x2	TR6x2	6	1 1/2	1 1/2	1.333	13.80
RA6x4	TR6x4	6	1 1/2	1 1/2	1.333	27.60
RA6x6	TR6x6	6	1 1/2	1 1/2	1.333	41.40
R8x2		8	1 1/4	3/4	0.625	5.20
R8x4		8	1 1/4	3/4	0.625	10.40
R8x6		8	1 1/4	3/4	0.625	15.60
RA8x2	TR8x2	8	1 1/4	1 1/4	1.125	9.80
RA8x4	TR8x4	8	1 1/4	1 1/4	1.125	19.60
RA8x6	TR8x6	8	1 1/4	1 1/4	1.125	29.40
R10x2		10	1	5/8	0.525	3.60
R10x4		10	1	5/8	0.525	7.20
R10x6		10	1	5/8	0.525	10.80
RA10x2	TR10x2	10	1	1	0.900	6.00
RA10x4	TR10x4	10	1	1	0.900	12.00
RA10x6	TR10x6	10	1	1	0.900	18.00
R12x2		12	3/4	1/2	0.417	2.00
R12x4		12	3/4	1/2	0.417	4.00
R12x6		12	3/4	1/2	0.417	6.00
RA12x2	TR12x2	12	3/4	3/4	0.667	3.40
RA12x4	TR12x4	12	3/4	3/4	0.667	6.80
RA12x6	TR12x6	12	3/4	3/4	0.667	10.20
R16x2		16	5/16	5/16	0.250	0.50
R16x4		16	5/16	5/16	0.250	1.00
R16x6		16	5/16	5/16	0.250	1.50
RA16x2	TR16x2	16	1/2	1/2	0.438	1.52
RA16x4	TR16x4	16	1/2	1/2	0.438	3.04
RA16x6	TR16x6	16	1/2	1/2	0.438	4.56
R20x2	TR20x2	20	3/8	3/8	0.325	0.84
R20x4	TR20x4	20	3/8	3/8	0.325	1.68
R20x6	TR20x6	20	3/8	3/8	0.325	2.52
R24x2		24	1/4	1/4	0.208	0.38
R24x4		24	1/4	1/4	0.208	0.76
R24x6		24	1/4	1/4	0.208	1.14



Machined Gear Rack

Martin Rack is made from low carbon cold drawn steel. It is available in 14½° and 20° pressure angle in 2, 4, and 6 foot lengths. Allowance is made for cutting and machining. Pinions to run with the rack may be selected from the Spur Gear section of the catalog. Special rack can be supplied in other materials, sizes, and pitches.



Wide Face Width Steel — 20° Pressure Angle

Part Number	Pitch	Face Width	Overall Thickness	Pitch Line Backing	App. Wt. lb/pc
R204x2	4	3 1/2	2	1.750	41.0
R204x4	4	3 1/2	2	1.750	82.0
R204x6	4	3 1/2	2	1.750	123.0
R205x2	5	2 1/2	1 1/2	1.300	22.4
R205x4	5	2 1/2	1 1/2	1.300	44.8
R205x6	5	2 1/2	1 1/2	1.300	67.2
R206x2	6	2	1 1/2	1.333	17.0
R206x4	6	2	1 1/2	1.333	34.0
R206x6	6	2	1 1/2	1.333	51.0
R208x2	8	1 1/2	1 1/2	1.375	13.8
R208x4	8	1 1/2	1 1/2	1.375	27.6
R208x6	8	1 1/2	1 1/2	1.375	41.3
R2010x2	10	1 1/4	1 1/4	1.150	9.0
R2010x4	10	1 1/4	1 1/4	1.150	18.0
R2010x6	10	1 1/4	1 1/4	1.150	27.0
R2012x2	12	1	1	0.917	6.4
R2012x4	12	1	1	0.917	12.8
R2012x6	12	1	1	0.917	19.2
R2016x2	16	3/4	3/4	0.688	3.4
R2016x4	16	3/4	3/4	0.688	6.8
R2016x6	16	3/4	3/4	0.688	10.2
R2020x2	20	1/2	1/2	0.450	0.8
R2020x4	20	1/2	1/2	0.450	1.6
R2020x6	20	1/2	1/2	0.450	2.5

Martin Stocks 14½° and 20° Spur Gears

**Rack in lengths up to 12'
available on request**