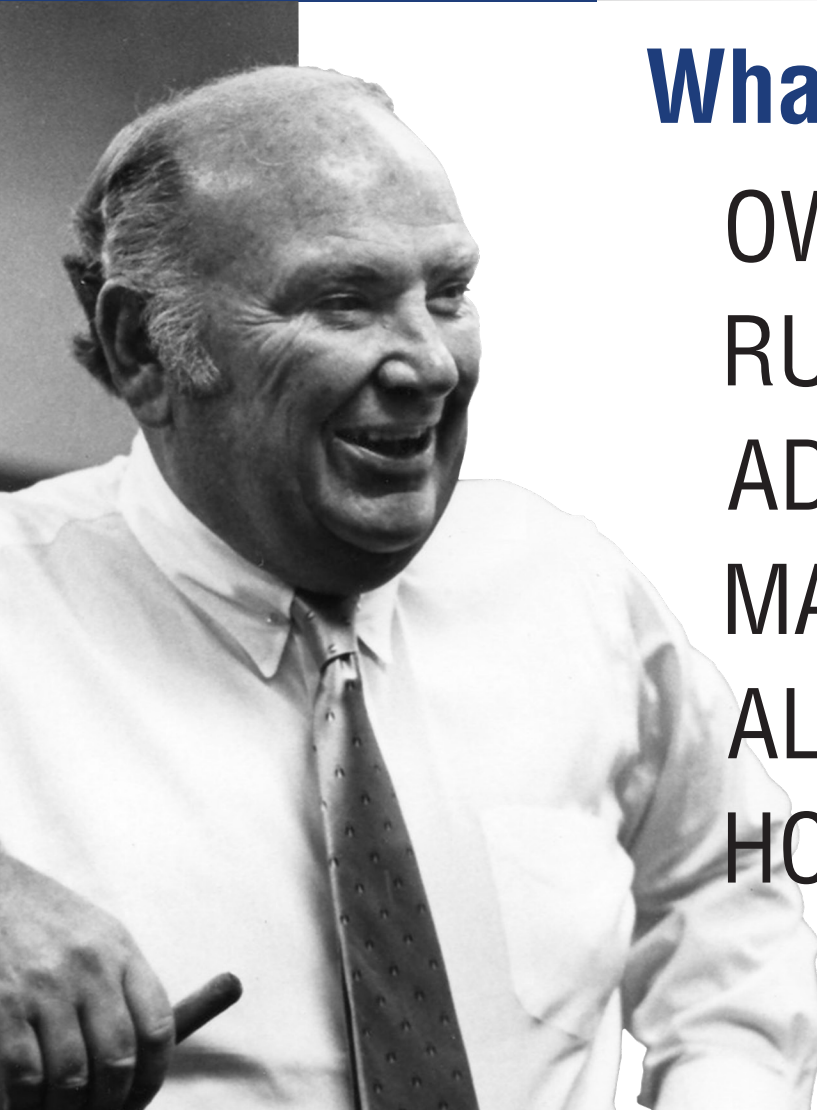


Martin Idlers



CEMA C, D, E IDLERS | STEEL ROLL | IMPACT ROLL |
RUBBER DISC | EQUAL | UNEQUAL | RETURN | V-RETURN |
FLAT CARRY | SELF-ALIGNER | IMPACT BEDS |
MADE-TO-ORDER



What would Joe do?

OWN your own territory and
take care of our customers

RUN your facility and take
care of our people

ADD something to
the ballgame

MAKE SURE you have your
priorities right

ALWAYS back to the basics – quality,
service, low-cost producer

HOW to get big and
stay small

Established in 1951 in Arlington, Texas, Martin has evolved into a global powerhouse with 30+ strategically located sites. Our unwavering commitment to excellence in power transmission and material handling positions us as a trusted partner globally. At Martin, we offer more than products; we provide precision, personalized service, combining global capability with local care. Experience the Martin difference, where our dedication to quality sets us apart.

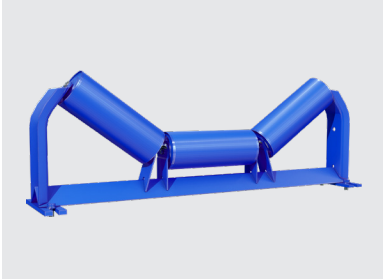
Success in Business, Martin’s Philosophy:

Success at Martin requires a strategic mindset — knowing customers, taking ownership, building trust, and cultivating an owner’s mentality. Effective leadership involves personal responsibility, positive work culture, visibility, and effective communication. Unlocking success demands creativity, innovation, and resisting the status quo. Aligning priorities with a greater purpose ensures contributions lead to organizational success. Martin emphasizes basics — quality, service, and low-cost production — for streamlined and maximized efforts.

“Get Big, Stay Small” Strategy:

Martin advises strategic business expansion, discovering scalable avenues while preserving core qualities. Maintaining agility and adaptability in the dynamic market landscape is crucial. In a world full of choices, Martin’s commitment to prioritizing personalized service and connections with customers sets us apart from the competition.

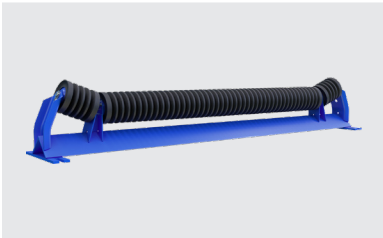
CARRY SIDE IDLERS

**EQUAL IDLERS**

Equal Idlers support the belt and carry material on the load side. They typically feature three rollers, two wing rolls set at 20°, 35°, or 45°, to form the trough. Martin Equal Idlers are built to meet or exceed all Conveyor Equipment Manufacturers Association (CEMA) load standards.

Available Options:

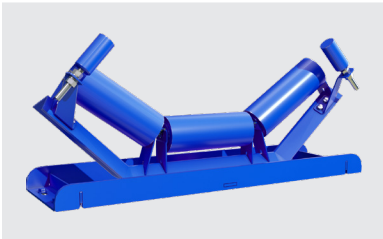
- Steel Rolls
- Impact Rolls
- Removable Wing Brackets
- Retractable Design

**UNEQUAL IDLERS**

Unequal Idlers are designed with a lower profile for sorting and inspection applications. They feature one longer center roll and two shorter, inclined wing rolls, which spread material for easy viewing, picking, and separation.

Available Options:

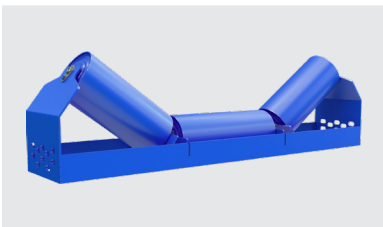
- Steel Rolls
- Impact Rolls

**EQUAL SELF-ALIGNERS**

Equal Self-Aligners help correct belt misalignment caused by environmental or operational factors. They pivot to guide the belt back to the center of the troughing idlers. Available for idler, return, or flat carry applications.

Available Options:

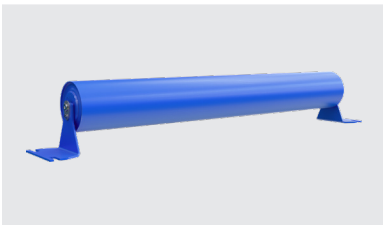
- Shoe-Type Design

**CHANNEL INSERT IDLERS**

Channel Inset Idlers mount inside a channel frame or on a vertical surface, bolting horizontally. Their low-profile design is ideal for portable equipment or areas where height clearance is critical.

Available Options:

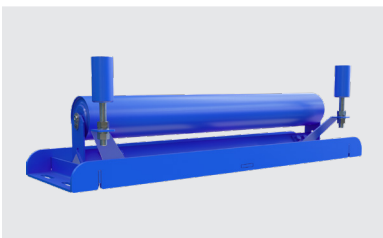
- Steel Rolls
- Impact Rolls

**FLAT CARRY**

Flat Carry Idlers support flat belts where no troughing is required, ideal for picking, sorting, feeding, or plowing material from the belt.

Available Options:

- Steel Roll
- Impact Roll

**FLAT CARRY SELF-ALIGNER**

Flat Carry Self-Aligners correct belt tracking on flat belt systems. Like their troughing counterparts, they pivot to guide the belt back to center. Commonly used in picking, sorting, or feeding applications.

Available Options:

- Steel Roll
- Impact Roll

**IMPACT LIVE SHAFT ROLL**

Impact Live Shaft Rollers are built for heavy-duty applications where high impact, heavy material loads, or elevated belt tensions are present. These rollers are mounted on external pillow block or flange bearings for maximum durability and ease of maintenance.

RETURN SIDE IDLERS

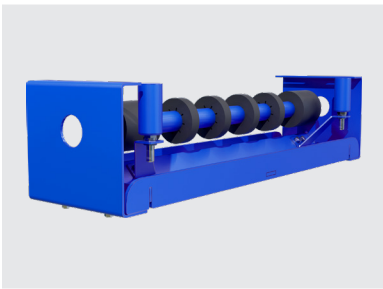


RETURNS

Support the belt on the return side, guiding it smoothly back to the loading point. Standard designs suit clean, non-abrasive material, while Rubber Disc Returns flex to shed carryback, reduce buildup, and help prevent damage from belt mistracking.

Available Options:

- Steel Roll
- Rubber Disc Roll
- Urethane Disc Roll
- Urethane Spiral Roll

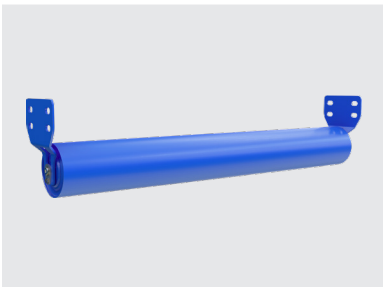


RETURN SELF-ALIGNER

Combine return belt support with self-aligning action to correct tracking issues. They pivot to guide the belt back to center, reducing edge wear and extending service life.

Available Options:

- Steel Roll
- Rubber Disc Roll
- Shoe-Type Design

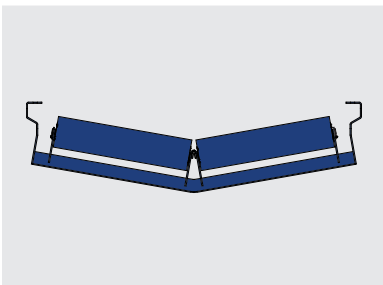


CHANNEL INSET RETURN

Return roll with channel inset brackets designed to mount inside channel frames or vertical surfaces. Ideal for low-profile or portable equipment where clearance is limited.

Available Options:

- Steel Roll
- Rubber Disc Roll

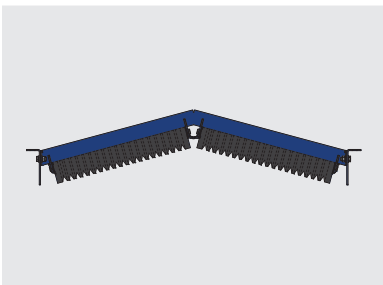


V-RETURN

Two-roll assembly set in a 10° V profile to improve belt tracking. Ideal for high-tension systems and steel cord belt applications.

Available Options:

- Steel Roll
- Rubber Disc Roll

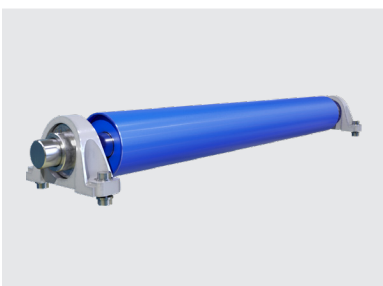


INVERTED V-RETURN

Mounted inside the belt to help guide it into the tail pulley on the return side, improving tracking and reducing edge wear.

Available Options:

- Steel Roll
- Rubber Disc Roll



LIVE SHAFT ROLL

Heavy-duty return roll with external pillow block bearings for feeder or high-tension applications where conventional flat rolls are not suitable.

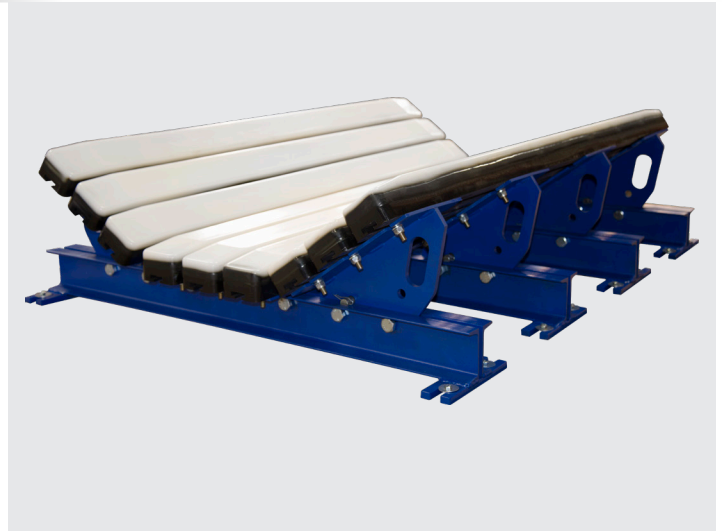
Available Options:

- Steel Roll
- Rubber Disc Roll

IMPACT BEDS

Martin Impact Beds are built to absorb heavy loading impact in the conveyor's loading zone, protecting belts, reducing spillage, and extending system life. A heavy-duty C-channel steel frame supports standard 3" x 4" rubber impact bars with a ¾" UHMW cap for a durable, low-friction wear surface that minimizes drag.

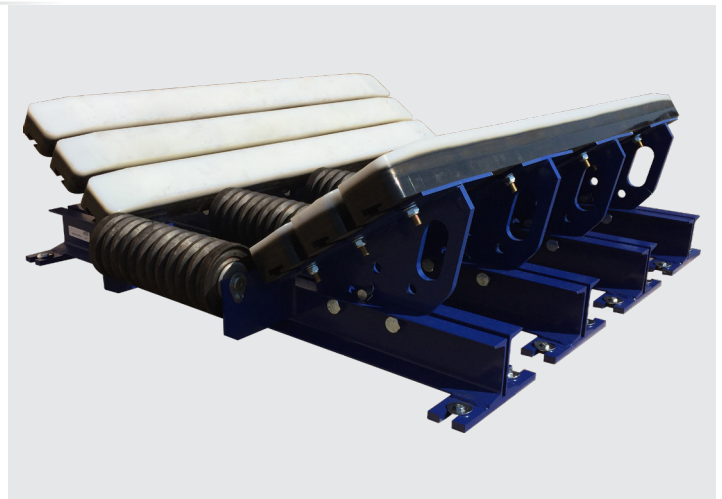
- 4' beds have 4 legs; 5' beds have 5 legs
- Adjustable to 20° or 35° (Flat or 45° available MTO)
- Medium-duty: Up to 750 lb-ft (fits CEMA C & D roll heights)
- Heavy-duty: Engineered on request (fits CEMA E roll heights)
- Improves transfer point sealing vs. standard impact idlers



IMPACT BEDS AND IMPACT SLIDER BEDS

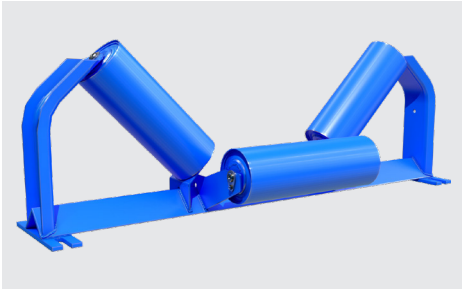
Impact Slider Beds use the same rugged frame but with center roll brackets welded in place. This design reduces belt-to-bar friction compared to conventional impact beds, ideal when motor horsepower is a concern.

- Reduced drag for lower power demand
- Protects the belt while dispersing impact force
- Adjustable wing angle for better sealing
- Allows skirting to seal against a solid impact bar
- Same construction lengths, belt width range, and angle options as standard impact beds

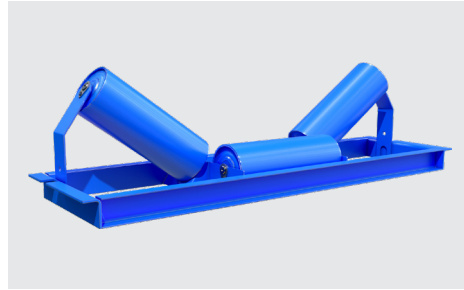


SPECIAL CONSTRUCTION

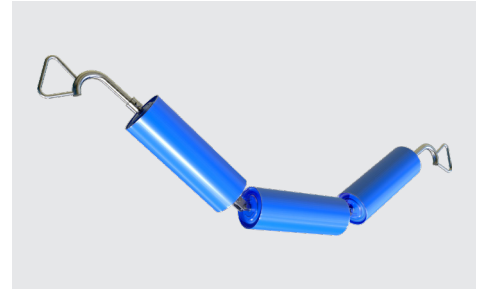
Designed for unique applications and challenging environments, these idlers offer specialized features to improve performance, durability, and ease of maintenance. From grain handling to heavy-duty mining, our special construction designs provide the right solution for your specific conveying needs.



GRAIN IDLER



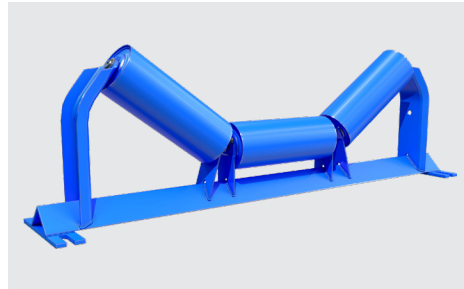
BOX FRAME IDLER



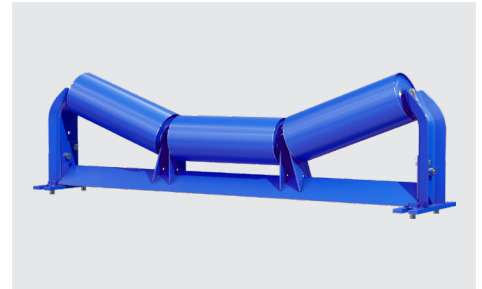
CATENARY IDLER



GALVANIZED FRAME



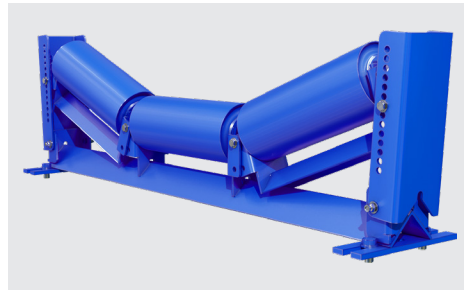
SCALE QUALITY IDLER



REMOVABLE WING BRACKET



RETRACTABLE IDLER



**ADJUSTABLE/TRANSITIONAL
IDLER**

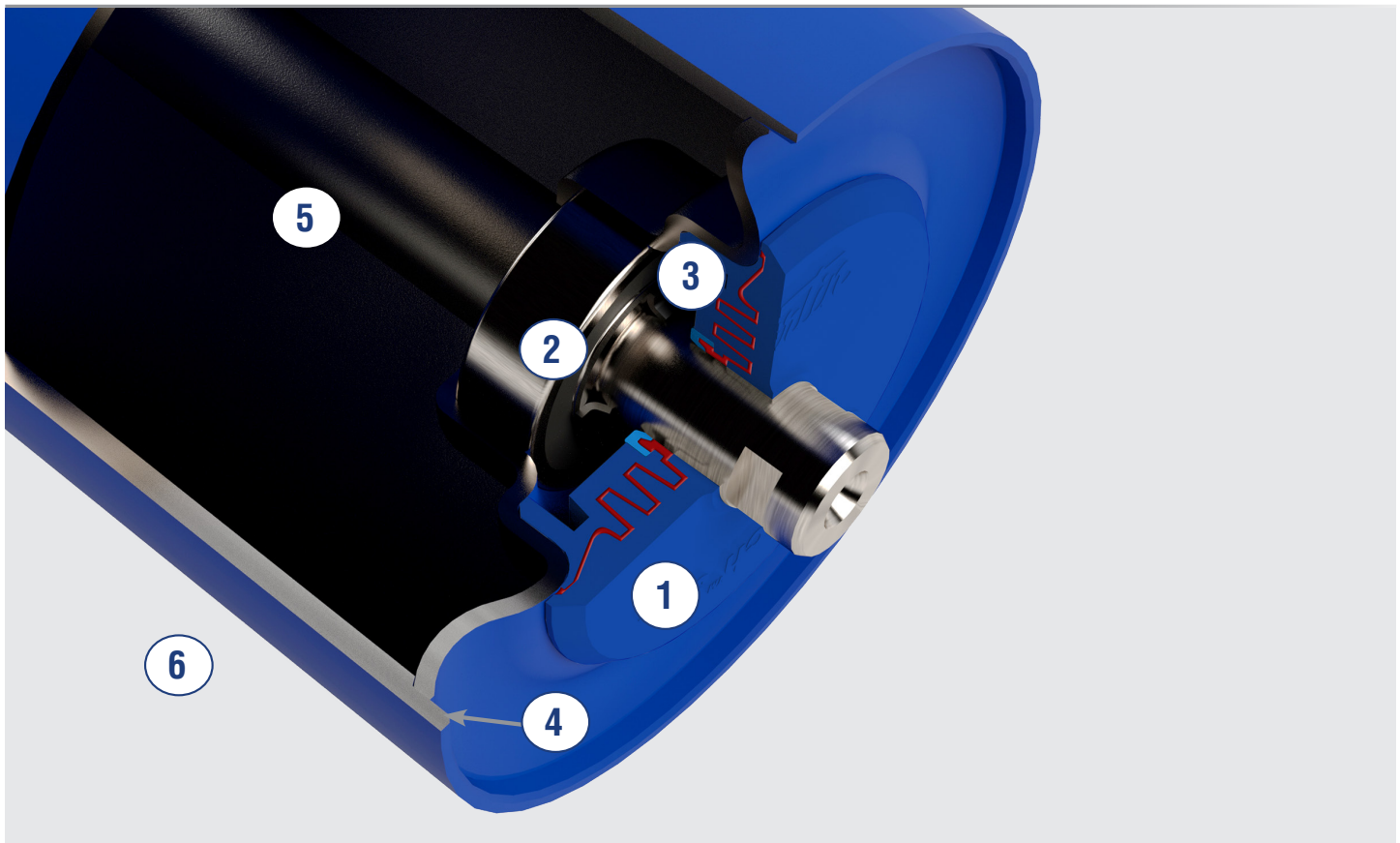


WIRE ROPE IDLER

OTHER SPECIAL CONSTRUCTION

- Offset Center Roll Idlers
- Wide Base Idler
- Urethane-Lagged Rolls

TRIPLE LABYRINTH SEAL



Triple labyrinth seal design offers the following exclusive martin bearing protection

- ① External shield deters impurities from entering the bearing housing
- Flinger design removes contaminants away from the bearing housing by centrifugal force
- Grease is injected into the labyrinth chambers during manufacturing to add an additional layer of protection against bearing contamination
- The contact lip seal adds an additional level of protection against moisture and fine particulate contaminants

② **Sealed for life ball bearings**

③ **Low rolling resistance** that allows for lower operating cost

④ **Recessed and protected bearing housing weld** protects against wear from belt

Oversized, solid steel shaft machined for bearing:

- ⑤ • 20 mm for CEMA C
- 25mm for CEMA D
- 40mm for CEMA E

⑥ **Low TIR**

Standard product line belt widths

- ⑦ • CEMA C is 18" to 60" belt widths
- CEMA D is 24" to 72" belt widths
- CEMA E is 36" to 96" belt widths

POWERING INDUSTRIES SINCE 1951

Unlock the pinnacle of industrial excellence with Martin, your trusted partner in custom idler engineering. For over seven decades, we've been at the forefront of innovation, crafting bespoke solutions that stand the test of time.

Elevate your industrial experience with Martin, where precision meets performance, and innovation meets reliability. Unleash the power of custom idlers designed to propel your industry forward. Choose Martin, choose excellence.



UNMATCHED INVENTORY

With the largest idler stock in North America, find the perfect fit for your needs, always exceeding expectations.

TAILORED TO PERFECTION

Crafting made-to-order idlers for unique industrial needs. Diverse materials, shaft options, and assemblies bring your vision to life.

QUALITY ASSURED

Backed by a solid one-year warranty*, Martin ensures top-tier reliability and durability in every product.

RAPID RESPONSE, SWIFT SOLUTIONS

Quick alterations and manufacturing across locations guarantee the industry's fastest lead times for made-to-order products. Your deadlines, our priority.

A PERSONAL TOUCH TO EVERY ORDER

Beyond products, Martin is your dedicated partner in success. Experience precision, performance, and reliability. Choose Martin, choose excellence.

* Conditions apply, check our Limited Warranty at <https://martinsg.info/terms>

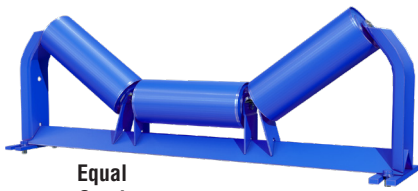
RETURN ROLL PINCH GUARDS

Keep employees safe and reduce conveyor maintenance hazards with Martin Return Roll Pinch Guards. Designed to cover pinch points on the return side, they protect workers while allowing quick, tool-free installation, no need to remove or loosen components

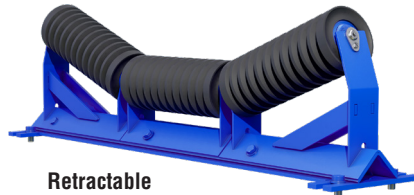
- Creates a safer work environment by shielding the belt pinch point
- Easy maintenance, install without removing existing components
- Lightweight yet rigid aluminum blade fits any roll width without flexing
- Corrosion-resistant aluminum with self-regenerating oxide layer for long service life
- Adjustable to fit your conveyor needs
- 304 stainless steel, corrosion-resistant side plates
- Mounts to existing Martin return idler brackets
- Prepackaged kit for consistent quality and fast installation



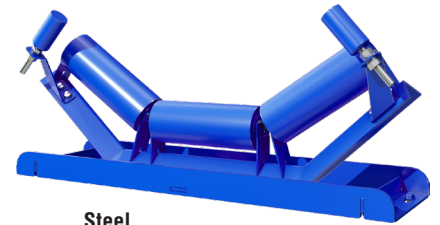
NOMENCLATURE



Equal Steel Idler



Retractable Impact Idler



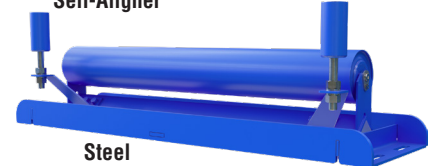
Steel Self-Aligner



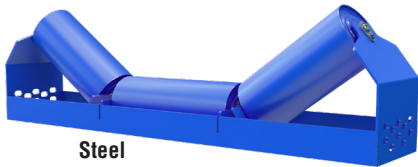
Unequal Impact Idler



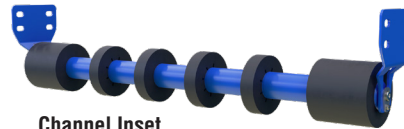
Steel Flat Carry



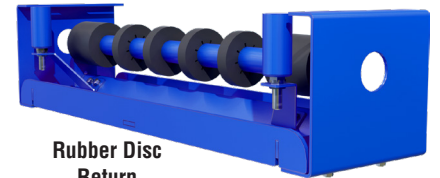
Steel Flat Carry Self-Aligner



Steel Channel Inset Idler



Channel Inset Rubber Disc Return



Rubber Disc Return Self-Aligner

CEMA Class
C, D, E

C 5 - 10 V 4 G - 36 - 09

Wall Thickness Gauge
(Only Steel Rolls) 09, 07, 04

Roll Diameter
4, 5, 6, 7

Belt Width
C 18" to 60"
D 24" to 72"
E 36" to 96"

Assembly Angle (Not for Return & Flat Carry)
10° V-Return
15° Inverted V-Return
20°, 35°, 45° Idler

Special Construction

Idler Type

- A** Grain Idler
- B** Box Frame Idler
- C** Catenary Idler
- G** Galvanized Frame
- L** Urethane-Lagged Rolls
- Q** Scale Quality Idler
- R** Removable Wing Bracket Idler
- RET** Retractable Idler
- TT** Adjustable/Transitional Idler
- W** Wide Base Idler
- WR** Wire Rope Idler
- TO** Offset Center Roll Idler

Carry Side

Return Side

- T** Equal Steel Idler
- TI** Equal Impact Idler
- TIR** Equal Impact Idler with Removable Wing Brackets
- RETI** Retractable Equal Impact Idler
- TSA** Equal Steel Self-Aligner
- TSS** Equal Steel Self-Aligner Shoe-Type
- U** Unequal Steel Idler
- UI** Unequal Impact Idler
- CT** Steel Channel Inset Idler
- CTI** Impact Channel Inset Idler
- F** Steel Flat Carry**
- FRD** Impact Flat Carry**
- FSA** Steel Flat Carry Self-Aligner
- LI** Impact Live Shaft Roll

- R** Steel Return**
- RRD** Rubber Disc Return**
- URD** Urethane Disc Return**
- RSA** Steel Return Self-Aligner*
- RSS** Steel Return Self-Aligner Shoe-Type*
- RRDSA** Rubber Disc Return Self-Aligner*
- CR** Steel Channel Inset Return**
- CRRD** Rubber Disc Channel Inset Return**
- V** Steel V-Return*
- VRD** Rubber Disc V-Return*
- IV** Steel Inverted V-Return
- IVRD** Rubber Disc Inverted V-Return
- LR** Steel Live Shaft Roll
- LRRD** Rubber Disc Live Shaft Roll
- USR** Urethane Spiral Return

***Frame Rise/Drop for V, VRD, RSA, RRDSA**

- 1** 1.5" Standard
- 4** 4.5" Standard
- 7** 7" Standard

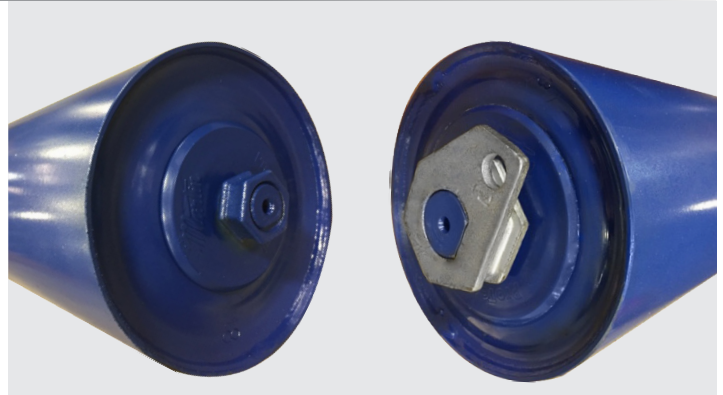
****Bracket Rise/Drop for R, RRD, F, FRD**

Add the end of part number, examples:

- C 5 - R - 36 - 09 - 4S**
- C 5 - FRD - 36 - 1**

RETROFIT ROLLS

Martin manufactures Retrofit Rolls that fit other manufacturer's frames. You get the benefits and performance of the Martin Roll in your existing frame or drop brackets.



C5 - T - 36 FN - 09

CEMA Class and Diameter

C, D, E CEMA Class
4, 5, 6, or 7 Diameter (inches)

Roll Type

T Steel Equal Idler
TI Impact Equal Idler
F Steel Flat Carry
FRD Impact Flat Carry
R Steel Return
RRD Rubber Disc Return
V Steel V-Return
VRD Rubber Disc V-Return

Belt Width in Inches

Wall Thickness Gauge

09, 07, 04

Manufacturer Code

SLOT END:

CCS Continental Canada Slot
CS Continental/Joy Slot
DS Douglas Slot
FS FMC/Syntron Slot
GS Goodman Slot
LS Luff Slot
MS Melco Slot
PS Prok Slot
RMS Rulmeca Slot
SAS Stephens Adamson/Metso Slot
SS Superior Slot
VS Van Gorp Slot

HEX NUT END:

CN Continental/Joy Hex Nut
FN FMC/Syntron Hex Nut
GN Goodman Hex Nut
HN Hewitt Hex Nut
RN Rexnord Hex Nut
SN Superior Hex Nut



Phone: 817.258.3000

Fax: 817.258.3333

martinsprocket.com