

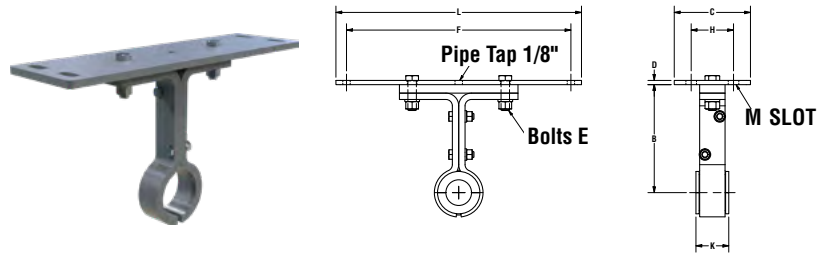
<p><b>STYLE 226</b></p>		<p>No. 226 hangers are designed for flush mounting inside the trough permitting dust-tight or weather-proof operation. This type hanger allows for minimum obstruction of material flow in high capacity conveyors. Available with friction type bearing.</p>
<p><b>STYLE 216</b></p>		<p>No. 216 hangers are designed for heavy duty applications. This hanger is flush mounted inside the trough permitting dust tight or weather proof operation. Hard iron or bronze bearings are normally furnished; however, the hanger can be furnished with other bearings.</p>
<p><b>STYLE 220</b></p>		<p>No. 220 hangers are designed for mount on top of the trough flanges and may be used where dust-tight or weather proof operation is not required. This type hanger allows for minimum obstruction of material flow in high capacity conveyors. Available with friction type bearing.</p>
<p><b>STYLE 230</b></p>		<p>No. 230 hangers are designed for heavy duty applications where mounting on top of the trough flanges is required. Hard iron or bronze bearings are normally furnished; however, other bearings are available.</p>
<p><b>STYLE 316</b></p>		<p>No. 316 hangers are designed for heavy duty use in conveyors where abnormal heat requires unequal expansion between the screw and conveyor trough. Hard iron or bronze bearings are normally furnished; however, this hanger can be furnished with other bearings.</p>
<p><b>STYLE 326</b></p>		<p>No. 326 hangers are designed to permit minimum obstruction of material flow and are used in conveyors where abnormal heat requires unequal expansion between the screw and the conveyor trough. Hard iron or bronze bearings are normally furnished, but other type bearings are available.</p>

# Hangers

<p><b>STYLE 60</b></p>		<p>No. 60 hangers are furnished with a heavy duty, permanently lubricated and sealed, self aligning ball bearing which permits temperatures up to 245° F. and will allow for up to 4° shaft misalignment. This hanger is mounted on top of the trough flanges. Grease fitting can be furnished if specified.</p>
<p><b>STYLE 70</b></p>		<p>No. 70 hangers are furnished with a heavy duty, permanently lubricated and sealed, self aligning ball bearing which permit temperatures up to 245° F. and will allow for up to 4° shaft misalignment. This hanger is mounted inside the trough. Grease fittings can be furnished if specified.</p>
<p><b>STYLE 30</b></p>		<p>No. 30 hangers are designed for side mounting within the conveyor trough on the noncarrying side and permit a minimum of obstruction of material flow. Available with friction type bearing.</p>
<p><b>STYLE 216F</b></p>		<p>No. 216F hangers are designed for heavy duty applications and are mounted inside of flared trough. Hard iron or bronze bearings are normally furnished; however, other bearings are available.</p>
<p><b>STYLE 19B</b></p>		<p>The No. 19B hanger is similar in construction to the No. 18B except they are mounted on top of the trough angles. Built-in ledges provide supports for the ends of the cover. They are streamline in design and permit free passage of the material. They are regularly furnished with Arguto oil impregnated wood, hard iron, bronze, or other special caps can be furnished.</p>
<p><b>AIR-PURGED HANGER</b></p>		<p>Air-Purged hangers are recommended when handling dusty and abrasive materials which contribute to shutdowns and hanger bearing failures. Air-swept hangers are available for 9"-24" conveyors. They should not be used when handling hot materials (over 250° F) or wet sticky materials or when handling non abrasive materials when an inexpensive hanger will do the job satisfactorily. In service, air-purged hangers deliver relatively trouble-free operation. They help solve noise nuisance problems, and they help reduce power requirement because of the low coefficient of friction. Maximum trough loading should not exceed 15%. The air, at approximately 1-1/4 PSI enters the housing at the top, passes over and around the bearing, and is dissipated around the coupling shaft on both sides of the housing. Thus the bearing is protected from dust and the material in the trough at all times. Only 3 to 7 cu. ft. of air per minute is required to keep each hanger bearing clean.</p>

## Style 220

Conveyor couplings are used to join individual lengths of conveyor screws and allow for rotation within the hanger bearing. Mild steel couplings are normally furnished; however induction hardened bearing area couplings may be furnished where highly abrasive materials are being conveyed. Jig drilling allows for ease of installation.

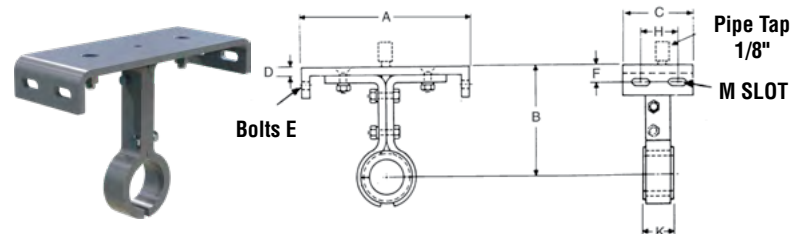


Conveyor Diameter	Coupling Size	Part Number*	B	C	D	E	F	H	K	L	M Slot	Weight Each
4	1	4CH2202	3 5/8	3 1/2	3/16	1/4	6 1/2	2	1 1/2	7 1/4	5/16 × 3/4	5
6	1 1/2	6CH2203	4 1/2	4 1/2	3/16	3/8	8 3/4	2 1/2	2	9 3/4	7/16 × 1 1/16	7
9	1 1/2	9CH2203	6 1/8	4 1/2	1/4	3/8	12 1/4	2 1/2	2	13 1/2	7/16 × 1 1/16	9
	2	9CH2204	6 1/8	4 1/2	1/4	3/8	12 1/4	2 1/2	2	13 1/2		11
10	1 1/2	10CH2203	6 3/8	4 1/2	1/4	3/8	13 1/4	2 1/2	2	14 1/2	7/16 × 1 1/16	10
	2	10CH2204	6 3/8	4 1/2	1/4	3/8	13 1/4	2 1/2	2	14 1/2		12
12	2	12CH2204	7 3/4	5	3/8	1/2	15 3/4	2 1/2	2	17 1/2	9/16 × 1 5/16	16
	2 7/16	12CH2205	7 3/4	5	3/8	1/2	15 3/4	2 1/2	3	17 1/2		21
	3	12CH2206	7 3/4	5	3/8	1/2	15 3/4	2 1/2	3	17 1/2		28
14	2 7/16	14CH2205	9 1/4	5	1/2	1/2	17 3/4	2 1/2	3	19 1/2	9/16 × 1 5/16	26
	3	14CH2206	9 1/4	5	1/2	1/2	17 3/4	2 1/2	3	19 1/2		33
16	3	16CH2206	10 5/8	5	1/2	1/2	19 3/4	2 1/2	3	21 1/2	9/16 × 1 5/16	39
	3 7/16	18CH2207	12 1/8	6	1/2	5/8	22 1/4	3 1/2	3	24 1/2		11/16 × 13/16
18	3	18CH2206	12 1/8	6	1/2	5/8	22 1/4	3 1/2	4	24 1/2	11/16 × 13/16	
	3 7/16	20CH2207	13 1/2	6	1/2	5/8	24 1/4	3 1/2	3	26 1/2		11/16 × 13/16
20	3	20CH2206	13 1/2	6	1/2	5/8	24 1/4	3 1/2	4	26 1/2	11/16 × 13/16	
	3 7/16	24CH2207	16 1/2	6	5/8	5/8	28 1/4	3 1/2	4	30 1/2		11/16 Hole

\*Refer to Page H-99 for bearings. For hangers with oil pipe add -0 to part number

## Style 226

No. 226 hangers are designed for flush mounting inside the trough permitting dust-tight or weather-proof operation. This type hanger allows for minimum obstruction of material flow in high capacity conveyors. Also available with friction type bearing.



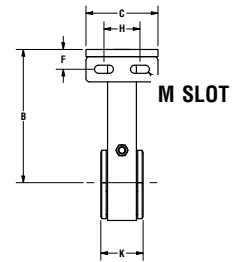
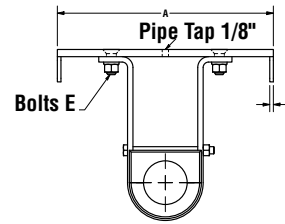
Conveyor Diameter	Coupling Size	Part Number*	A	B	C	D	E	F	H	K	M Slot	Weight Each
4	1	4CH2262	5	3 5/8	3 1/2	3/16	1/4	11/16	2	1 1/2	5/16 × 5/16	5
6	1 1/2	6CH2263	7	4 1/2	4 1/2	3/16	3/8	3/4	2 1/2	2	7/16 × 1 1/16	7
9	1 1/2	9CH2263	10	6 1/8	4 1/2	1/4	3/8	1	2 1/2	2	7/16 × 1 1/16	9
	2	9CH2264	10	6 1/8	4 1/2	1/4	3/8	1	2 1/2	2		11
10	1 1/2	10CH2263	11	6 3/8	4 1/2	1/4	3/8	1	2 1/2	2	7/16 × 1 1/16	10
	2	10CH2264	11	6 3/8	4 1/2	1/4	3/8	1	2 1/2	2		12
12	2	12CH2264	13	7 3/4	5	3/8	1/2	1 1/4		2	9/16 × 1 5/16	16
	2 7/16	12CH2265	13	7 3/4	5	3/8	1/2	1 1/4	2 1/2	3		21
	3	12CH2266	13	7 3/4	5	3/8	1/2	1 1/4	2 1/2	3		28
14	2 7/16	14CH2265	15	9 1/4	5	1/2	1/2	1 3/8	2 1/2	3	9/16 × 1 5/16	26
	3	14CH2266	15	9 1/4	5	1/2	1/2	1 3/8	2 1/2	3		33
16	3	16CH2266	17	10 5/8	5	1/2	1/2	1 3/8	2 1/2	3	9/16 × 1 5/16	39
	3 7/16	18CH2267	19	12 1/8	6	1/2	5/8	1 1/2	3 1/2	3		11/16 × 1 11/16
18	3	18CH2266	19	12 1/8	6	1/2	5/8	1 1/2	3 1/2	4	11/16 × 1 11/16	
	3 7/16	20CH2267	21	13 1/2	6	1/2	5/8	1 1/2	3 1/2	4		11/16 × 1 11/16
20	3	20CH2266	21	13 1/2	6	1/2	5/8	1 1/2	3 1/2	4	11/16 × 1 11/16	
	3 7/16	24CH2267	25	16 1/2	6	5/8	5/8	1 5/8	3 1/2	4		11/16 × 1 11/16

\*Refer to Page H-99 for bearings. For hangers with oil pipe add -0 to part number

# Hangers

## Style 216

No. 216 hangers are designed for heavy duty applications. This hanger is flush mounted inside the trough permitting dust tight or weather proof operation. Hard iron or bronze bearings are normally furnished; however, the hanger can be furnished with other bearings.

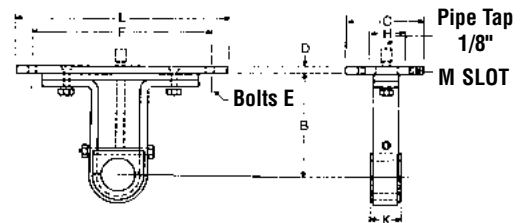


Conveyor Diameter	Coupling Size	Part Number*	A	B	C	D	E	F	H	K	M Slot	Weight Each
6	1 1/2	6CH2163	7	4 1/2	4 1/2	3/16	3/8	3/4	2 1/2	2	7/16 x 1 1/16	5
9	1 1/2	9CH2163	10	6 1/8	4 1/2	1/4	3/8	1	2 1/2	2	7/16 x 1 1/16	7
	2	9CH2164	10	6 1/8	4 1/2	1/4	3/8	1	2 1/2	2		9
10	1 1/2	10CH2163	11	6 3/8	4 1/2	1/4	3/8	1	2 1/2	2	7/16 x 1 1/16	8
	2	10CH2164	11	6 3/8	4 1/2	1/4	3/8	1	2 1/2	2		10
12	2	12CH2164	13	7 3/4	5	3/8	1/2	1 1/4	2 1/2	2	9/16 x 1 5/16	14
	2 7/16	12CH2165	13	7 3/4	5	3/8	1/2	1 1/4	2 1/2	3		18
	3	12CH2166	13	7 3/4	5	3/8	1/2	1 1/4	2 1/2	3		21
14	2 7/16	14CH2165	15	9 1/4	5	1/2	1/2	1 3/8	2 1/2	3	9/16 x 1 5/16	23
	3	14CH2166	15	9 1/4	5	1/2	1/2	1 3/8	2 1/2	3		25
16	3	16CH2166	17	10 5/8	5	1/2	1/2	1 3/8	2 1/2	3	9/16 x 1 5/16	28
18	3	18CH2166	19	12 1/8	6	1/2	5/8	1 1/2	3 1/2	3	11/16 x 1 11/16	34
	3 7/16	18CH2167	19	12 1/8	6	1/2	5/8	1 1/2	3 1/2	4		44
20	3	20CH2166	21	13 1/2	6	1/2	5/8	1 1/2	3 1/2	3	11/16 x 1 11/16	36
	3 7/16	20CH2167	21	13 1/2	6	1/2	5/8	1 1/2	3 1/2	4		47
24	3 7/16	24CH2167	25	16 1/2	6	5/8	5/8	1 5/8	3 1/2	4	11/16 x 1 11/16	53

\*Refer to Page H-99 for bearings. For hangers with oil pipe add -0 to part number

## Style 230

No. 230 hangers are designed for heavy duty applications where mounting on top of the trough flange is required. Hard iron or bronze bearings are normally furnished; however, other bearings are available.

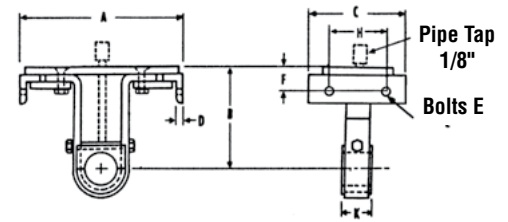


Conveyor Diameter	Coupling Size	Part Number*	B	C	D	E	F	H	K	L	M Slot	Weight Each
6	1 1/2	6CH2303	4 1/2	4 1/2	3/16	3/8	8 3/4	2 1/2	2	9 3/4	7/16 x 1 1/16	6
9	1 1/2	9CH2303	6 1/8	4 1/2	1/4	3/8	12 1/4	2 1/2	2	13 1/2	7/16 x 1 1/16	8
	2	9CH2304	6 1/8	4 1/2	1/4	3/8	12 1/4	2 1/2	2	13 1/2		10
10	1 1/2	10CH2303	63/8	4 1/2	1/4	3/8	13 1/4	2 1/2	2	14 1/2	7/16 x 1 1/16	9
	2	10CH2304	63/8	4 1/2	1/4	3/8	13 1/4	2 1/2	2	14 1/2		11
12	2	12CH2304	7 3/4	5	3/8	1/2	15 3/4	2 1/2	2	17 1/2	9/16 x 1 5/16	15
	2 7/16	12CH2305	7 3/4	5	3/8	1/2	15 3/4	2 1/2	3	17 1/2		20
	3	12CH2306	7 3/4	5	3/8	1/2	15 3/4	2 1/2	3	17 1/2		25
14	2 7/16	14CH2305	9 1/4	5	1/2	1/2	17 3/4	2 1/2	3	19 1/2	9/16 x 1 5/16	24
	3	14CH2306	9 1/4	5	1/2	1/2	17 3/4	2 1/2	3	19 1/2		29
16	3	16CH2306	10 5/8	5	1/2	1/2	19 3/4	2 1/2	3	21 1/2	9/16 x 1 5/16	35
18	3	18CH2306	12 1/8	6	1/2	5/8	22 1/4	3 1/2	3	24 1/2	1 1/16 x 13/16	34
	3 7/16	18CH2307	12 1/8	6	1/2	5/8	22 1/4	3 1/2	4	24 1/2		47
20	3	20CH2306	13 1/2	6	1/2	5/8	24 1/4	3 1/2	3	26 1/2	1 1/16 x 13/16	40
	3 7/16	20CH2307	13 1/2	6	1/2	5/8	24 1/4	3 1/2	4	26 1/2		49
24	3 7/16	24CH2307	16 1/2	6	5/8	5/8	28 1/4	3 1/2	4	30 1/2	1 1/16 Holes	55

\*Refer to Page H-99 for bearings. For hangers with oil pipe add -0 to part number

## Style 316

No. 316 hangers are designed for heavy duty use in conveyors where abnormal heat requires unequal expansion between the screw and conveyor trough. Hard iron or bronze bearings are normally used; however, this hanger can be furnished with other bearings.



## Style 326

No. 326 hangers are designed to permit minimum obstruction of material flow and are used in conveyors where abnormal heat requires unequal expansion between the screw and the conveyor trough. Hard iron or bronze bearings are normally used, but other type bearings are available.

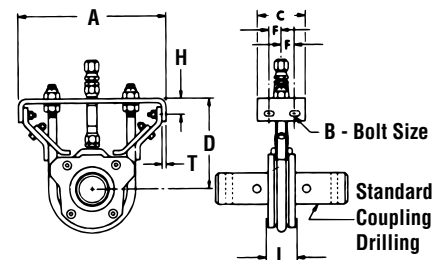


Conveyor Diameter	Coupling Size	Part Number		A	B	C	D	E	F	H	K
		Style 316*	Style 326*								
6	1 1/2	6CH3163	6CH3263	7	4 1/2	6	3/16	3/8	3/4	4 1/2	2
	2	9CH3164	9CH3264	10	6 1/8	6	3/16	3/8	1	4 1/2	2
9	1 1/2	9CH3163	9CH3263	10	6 1/8	6	3/16	3/8	1	4 1/2	2
	2	9CH3164	9CH3264	10	6 1/8	6	3/16	3/8	1	4 1/2	2
10	1 1/2	10CH3163	10CH3263	11	6 3/8	6	3/16	3/8	1	4 1/2	2
	2	10CH3164	10CH3264	11	6 3/8	6	3/16	3/8	1	4 1/2	2
12	2	12CH3164	12CH3264	13	7 3/4	6 1/2	1/4	1/2	1 1/4	5	2
	2 7/16	12CH3165	12CH3265	13	7 3/4	6 1/2	1/4	1/2	1 1/4	5	3
	3	12CH3166	12CH3266	13	7 3/4	6 1/2	1/4	1/2	1 1/4	5	3
14	2 7/16	14CH3165	14CH3265	15	9 1/4	6 1/2	1/4	1/2	1 3/8	5	3
	3	14CH3166	14CH3266	15	9 1/4	6 1/2	1/4	1/2	1 3/8	5	3
16	3	16CH3166	16CH3266	17	10 5/8	6 1/2	1/4	1/2	1 3/8	5	3
18	3	18CH3166	18CH3266	19	12 1/8	7	1/4	5/8	1 5/8	5 1/4	3
	3 7/16	18CH3167	18CH3267	19	12 1/8	7	1/4	5/8	1 5/8	5 1/4	4
20	3	20CH3166	20CH3266	21	13 1/2	7	1/4	5/8	1 5/8	5 1/4	3
	3 7/16	20CH3167	20CH3267	21	13 1/2	7	1/4	5/8	1 5/8	5 1/4	4
24	3 7/16	24CH3167	24CH3267	25	16 1/2	7	1/4	5/8	1 3/4	5 1/4	4

\*Refer to Page H-99 for bearings. For hangers with oil pipe add -0 to part number

## Air-Purged Hanger

Air purged hangers are recommended when handling dusty and abrasive materials which contribute to shut-downs and hanger bearing failures. They should not be used when handling hot materials (over 250°F) or wet sticky materials or when handling nonabrasive materials when an inexpensive hanger will do the job satisfactorily. Maximum trough loading should not exceed 15%. The air, at approximately 11/4 PSI, enters the housing at the top, passes over and around the bearing, and is dissipated around the coupling shaft on both sides of the housing. Only 3 to 7 cu. ft. of air per minute is required to keep each hanger bearing clean.



Conveyor Diameter	Part Number	Shaft Diameter	Weight (lb)	A	B	C	D	F	H	L	T
9	9CHAPH3	1 1/2	15	10	3/8	4 1/2	6 1/8	1 1/4	1	2	1/4
	9CHAPH4	2	20								
12	12CHAPH4	2	30	13	1/2	5	7 3/4	1 1/4	1 1/4	3	1/4
	12CHAPH5	2 7/16	52								
	12CHAPH6	3	68								
14	14CHAPH5	2 7/16	60	15	1/2	5	9 1/4	1 1/4	1 3/8	3	3/8
	14CHAPH6	3	74								
16	16CHAPH6	3	77	17	1/2	5	10 5/8	1 1/4	1 3/8	3	3/8
18	18CHAPH6	3	91	19	5/8	6	12 1/8	1 3/4	1 5/8	3	1/2
20	20CHAPH6	3	105	21	5/8	6	13 1/2	1 3/4	1 5/8	3	1/2
	20CHAPH7	3 7/16	140								
24	24CHAPH7	3 7/16	155	25	5/8	6	16 1/2	1 3/4	1 5/8	4	1/2

# Hangers



## Style 30

No. 30 hangers are designed for side mounting within the conveyor trough on the non-carrying side and permit a minimum of obstruction of material flow. Available with friction type bearing.

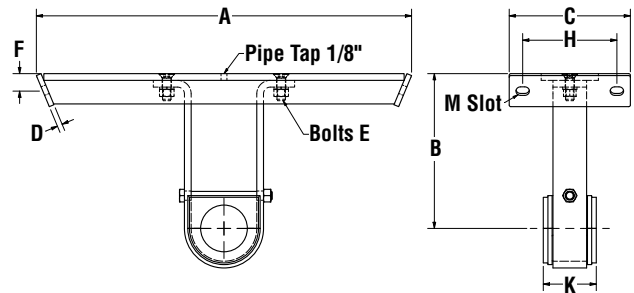


Conveyor Diameter	Coupling Size	Part Number*	A	B	C	D	E	F	G	H	Weight Each
6	1 1/2	6CH303	3 1/2	4 1/4	1 1/2	3/8	5/16	3 1/8	1/2	2	3
9	1 1/2	9CH303	5	5 7/8	1 1/2	3/8	3/8	4 1/4	1/2	2	6
	2	9CH304	5	5 7/8	1 1/2	1/2	3/8	4 1/4	1/2	2	8
10	1 1/2	10CH303	5 1/2	6 3/8	1 1/2	3/8	1/2	4 3/8	3/4	2	8
	2	10CH304	5 1/2	6 3/8	1 1/2	1/2	1/2	4 3/8	3/4	2	9
12	2	12CH304	6 1/2	7 1/2	1 1/2	1/2	1/2	5 1/2	3/4	2	12
	2 7/16	12CH305	6 1/2	7 1/2	2	1/2	1/2	5 1/2	3/4	3	18
	3	12CH306	6 1/2	7 1/2	2	5/8	1/2	5 1/2	3/4	3	20
14	2 7/16	14CH305	7 1/2	9	2	1/2	5/8	6 7/8	7/8	3	20
	3	14CH306	7 1/2	9	2	5/8	5/8	6 7/8	7/8	3	22
16	3	16CH306	8 1/2	10 3/8	2	5/8	5/8	8	1	3	32
18	3	18CH306	9 1/2	11 7/8	2	3/4	5/8	8	1 1/4	3	30
	3 7/16	18CH307	9 1/2	11 7/8	3	3/4	5/8	8	1 1/4	4	33
20	3	20CH306	10 1/2	13 1/4	2	3/4	5/8	10 1/4	1 1/4	3	32
	3 7/16	20CH307	10 1/2	13 1/4	3	3/4	5/8	10 1/4	1 1/4	4	38
24	3 7/16	24CH307	12 1/2	16 1/4	3	3/4	3/4	12 3/4	1 1/2	4	46

\*Refer to Page H-99 for bearings. For hangers with oil pipe add -0 to part number

## Style 216F

No. 216F hangers are designed for heavy duty applications and are mounted inside of flared trough. Hard iron or bronze bearings are normally furnished; however, other bearings are available.

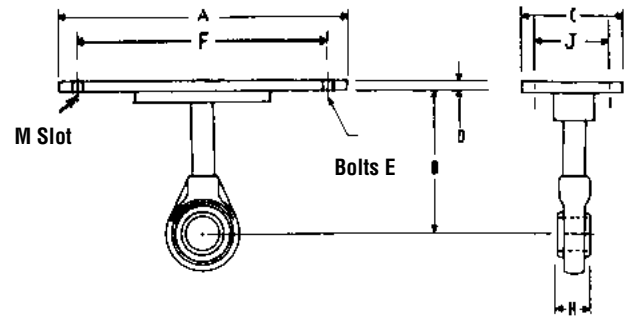


Conveyor Diameter	Coupling Size	Part Number*	A	B	C	D	E	F	H	K	Weight Each	M Slot
6	1 1/2	6CH216F3	14	7	7 1/2	1/4	3/8	7/8	6	2	9	7/16 x 3/4
9	1 1/2	9CH216F3	18	9	9	3/16	3/8	1	7	2	14	7/16 x 15/16
	2	9CH216F4									17	
12	2	12CH216F4								2	24	9/16 x 15/16
	2 7/16	12CH216F5	22	10	9	3/8	1/2	1 1/4	7	3	28	
14	3	12CH216F6									32	9/16 x 15/16
	2 7/16	14CH216F5	24	11	9	3/8	1/2	1 1/8	7	3	31	
16	3	14CH216F6									34	11/16 x 1
	3	16CH216F6	28	11 1/2	9	1/2	5/8	1 1/4	7	3	38	
18	3	18CH216F6	31	12 1/8	10	1/2	5/8	1 1/2	8	3	52	11/16 x 15/16
	3 7/16	18CH216F7								4	61	
20	3	20CH216F6	34	13 1/2	10	1/2	5/8	1 1/2	8	3	55	11/16 x 15/16
	3 7/16	20CH216F7								4	64	
24	3 7/16	24CH216F7	40	16 1/2	10	5/8	5/8	1 5/8	8	4	71	11/16 x 15/16

\*Refer to Page H-99 for bearings. For hangers with oil pipe add -0 to part number

## Style 60

No. 60 hangers are furnished with a heavy duty, permanently lubricated and sealed, self-aligning ball bearing which permits temperatures up to 245° F. and will allow for up to 4° shaft misalignment. This hanger is mounted on top of the trough flanges. Grease fitting can be furnished if specified.

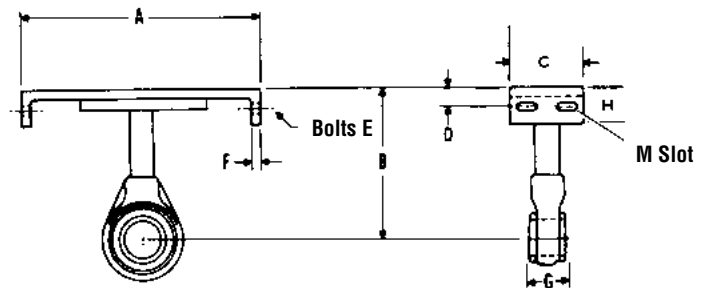


Conveyor Diameter	Coupling Size	Part Number*	A	B	C	D	E	F	H	J	Weight Each	M Slot
6	1 1/2	6CH603	9 3/4	4 1/2	4 1/2	3/16	3/8	8 3/4	1 11/16	2	7	7/16 × 11/16
9	1 1/2	9CH603	13 1/2	6 1/8	4 1/2	1/4	3/8	12 1/4	1 11/16	2 1/2	8	7/16 × 11/16
	2	9CH604	13 1/2	6 1/8	4 1/2	1/4	3/8	12 1/4	1 3/4	2 1/2	9	7/16 × 11/16
10	1 1/2	10CH603	14 1/2	6 3/8	4 1/2	1/4	3/8	13 1/4	1 11/16	2 1/2	9	7/16 × 15/16
	2	10CH604	14 1/2	6 3/8	4 1/2	1/4	3/8	13 1/4	1 3/4	2 1/2	10	7/16 × 15/16
12	2	12CH604	17 1/2	7 3/4	5	3/8	1/2	15 3/4	1 3/4	2 1/2	12	9/16 × 15/16
	2 7/16	12CH605	17 1/2	7 3/4	5	3/8	1/2	15 3/4	1 63/64	2 1/2	20	9/16 × 15/16
	3	12CH606	17 1/2	7 3/4	5	3/8	1/2	15 3/4	2 11/16	2 1/2	30	9/16 × 15/16
14	2 7/16	14CH605	19 1/2	9 1/4	5	1/2	1/2	17 3/4	1 63/64	2 1/2	21	9/16 × 15/16
	3	14CH606	19 1/2	9 1/4	5	1/2	1/2	17 3/4	2 11/32	2 1/2	32	9/16 × 15/16
16	3	16CH606	21 1/2	10 5/8	5	1/2	1/2	19 3/4	2 11/32	2 1/2	35	9/16 × 15/16
18	3	18CH606	24 1/2	12 1/8	6	1/2	5/8	22 1/4	2 11/32	3 1/2	40	11/16 × 1 11/16
20	3	20CH606	26 1/2	13 1/2	6	1/2	5/8	24 1/4	2 11/32	3 1/2	45	11/16 × 1 11/16
24	3 7/16	24CH607	30 1/2	16 1/2	6	5/8	5/8	28 1/4	2 31/64	3 1/2	58	11/16 × 1 11/16

\*For hangers with oil pipe add -0 to part number

## Style 70

No. 70 hangers are furnished with a heavy duty, permanently lubricated and sealed, self-aligning ball bearing which permits temperatures up to 245° F. and will allow for up to 4° shaft misalignment. This hanger is mounted inside the trough. Grease fitting can be furnished if specified.



Conveyor Diameter	Coupling Size	Part Number*	A	B	C	D	E	F	G	H	Weight Each	M Slot
6	1 1/2	6CH703	7	4 1/2	4 1/2	3/4	3/8	3/16	1 11/16	1 1/2	7	7/16 × 11/16
9	1 1/2	9CH703	10	6 1/8	4 1/2	1	3/8	1/4	1 11/16	1 3/4	8	7/16 × 11/16
	2	9CH704	10	6 1/8	4 1/2	1	3/8	1/4	1 3/4	1 3/4	9	7/16 × 11/16
10	1 1/2	10CH703	11	6 3/8	4 1/2	1	3/8	1/4	1 11/16	1 3/4	9	7/16 × 11/16
	2	10CH704	11	6 3/8	4 1/2	1	3/8	1/4	1 3/4	1 3/4	10	7/16 × 11/16
12	2	12CH704	13	7 3/4	5	1 1/4	1/2	3/8	1 3/4	2 1/8	12	9/16 × 15/16
	2 7/16	12CH705	13	7 3/4	5	1 1/4	1/2	3/8	1 63/64	2 1/8	20	
	3	12CH706	13	7 3/4	5	1 1/4	1/2	3/8	2 11/32	2 1/8	30	
14	2 7/16	14CH705	15	9 1/4	5	1 3/8	1/2	1/2	1 63/64	2 1/4	21	9/16 × 15/16
	3	14CH706	15	9 1/4	5	1 3/8	1/2	1/2	2 11/32	2 1/4	32	
16	3	16CH706	17	10 5/8	5	1 3/8	1/2	1/2	2 11/32	2 1/4	35	9/16 × 15/16
18	3	18CH706	19	12 1/8	6	1 1/2	5/8	1/2	2 11/32	2 1/2	40	11/16 × 13/16
20	3	20CH706	21	13 1/2	6	1 1/2	5/8	1/2	2 11/32	2 1/2	45	11/16 × 13/16
24	3 7/16	24CH707	25	16 1/2	6	1 5/8	5/8	5/8	2 11/32	2 5/8	58	11/16 Holes

\*For hangers with oil pipe add -0 to part number

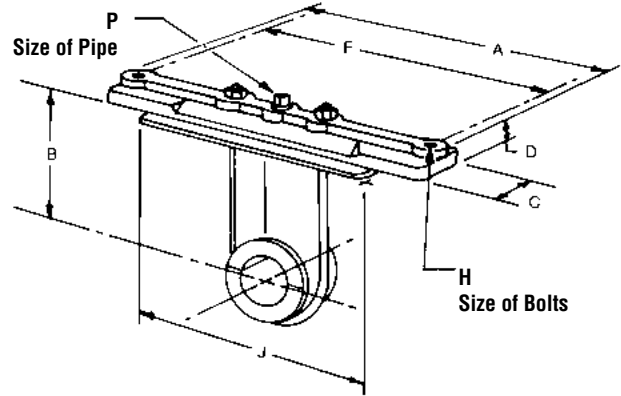
# Hangers



## Style 19B

The No. 19-B Hanger is similar in construction to the No. 18-B except they are mounted on top of the trough angles. Built-in ledges provide supports for the ends of the cover. They are streamlined in design and permit free passage of the material.

Top half is furnished with bronze bearing. Bottom half can be supplied in oil impregnated wood, hard iron, or other special caps may be furnished on request.



Conveyor Diameter	Coupling Size	Part Number	A	B	C	D	F	H	J	P	Weight
6	1 1/2	6CH19B3	9 7/8	4 1/2	1 7/8	7/8	8 3/4	9/16	6 1/2	1/8	8.5
9	1 1/2	9CH19B3	13 1/2	6 1/8	1 3/4	1	12 1/4	9/16	9 1/2	1/8	13.0
	2	9CH19B4	13 1/2	6 1/8	1 3/4	1	12 1/4	9/16	9 1/2	1/8	15.5
10	1 1/2	10CH19B3	14 1/2	6 3/8	1 3/4	1	13 1/4	9/16	10 1/2	1/8	14.0
	2	10CH19B4	14 1/2	6 3/8	1 3/4	1	13 1/4	9/16	10 1/2	1/8	14.0
12	2	12CH19B4	17	7 3/4	2	1 1/4	15 3/4	9/16	12 1/2	1/8	24.0
	2 7/16	12CH19B5	17	7 3/4	2 1/8	15/6	15 3/4	9/16	12 1/2	1/8	24.5
	3	12CH19B6	17	7 3/4	2 1/8	15/6	15 3/4	9/16	12 1/2	1/8	24.5
14	2 7/16	14CH19B5	19 1/4	9 1/4	3	1 1/2	17 3/4	9/16	14 1/2	1/8	37.0
	3	14CH19B6	19 1/4	9 1/4	3	1 1/2	17 3/4	9/16	14 1/4	1/8	37.0
16	3	16CH19B6	21 1/4	10 5/8	3	1 3/4	19 3/4	11/16	16 1/2	1/8	45.0
18	3	18CH19B6	23 3/4	12 1/8	3	1 5/8	22 1/4	11/16	18 1/2	1/8	48.5
20	3 7/16	20CH19B7	26 1/4	13 1/2	4	1 1/2	24 1/4	13/16	20	1/8	60.0



# Screw Conveyor Hanger Bearing Selection Application

Bearing Material	Maximum Operating Temperature (°F)	Styles Available	Material FDA Complaint	Self Lube	Some Suggested Uses	Comments
<b>WOOD</b>	160°	220, 216, 19B	–	Yes	Grain, Feed, Fertilizer	Good general purpose.
<b>UHMW</b>	225°	220, 216	Yes	Yes	Food	Material USDA approved. Does not swell in water.
<b>MARTIN HARD IRON</b>	500°	220	–	Yes	Chemical, Cement, Aggregate	Requires Hardened Shaft
<b>CAST HARD IRON</b>	500°	220, 216, 19B	–	–	Lime, Cement, Salt, Gypsum	Requires hardened shaft. Can be noisy. Lubrication required in some applications.
<b>CERAMIC<sup>1</sup></b>	1,000°	220, 216	Yes	–	Chemical, Cement, Food	Requires hardened shafts.
<b>STELLITE</b>	1000°	220, 216	–	–	Chemical, Cement, Aggregate	Requires Stellite insert in shaft.
<b>FOOD GRADE ENGINEERED NYLON</b>	300°	220	Yes	Yes	Food, Grain, Fertilizer	For dry application.
<b>NYLATRON GS</b>	250°	220, 19B	–	Yes	Chemical, Handling, Grain, Feed	Very low load capacity.
<b>MARTIN BRONZE</b>	850°	220	–	Yes	Grain, Feed, Processing	High quality bearings. High load capacity.
<b>MARTIN HDPE</b>	200°	220	Yes	Yes	Grain, Feed, Chemical Handling	Recommended for non-abrasive applications
<b>MARTIN URETHANE</b>	200°	220	–	Yes	Grain, Chemical, Fertilizer	Good general purpose.
<b>MARTIN WHITE IRON</b>	500°	220	–	–	Chemical, Cement, Aggregate	Requires hardened shaft. Can be noisy. Lubrication required in some applications.
<b>GATKE</b>	400°	220, 216	–	–	Chemical	Fiberglass fabric. Good for higher speeds.
<b>ERTALYTE®</b>	200°	220, 216	Yes	–	Food	Registered Trademark of Quadrant Engineering Products
<b>BALL BEARING</b>	180°	60, 70	–	–	Non-abrasive applications	General purpose use.

<sup>1</sup> Higher temperature ceramics are available.

# Hanger Bearings

Hanger Types	Shaft Diameter	Part Number	Bearing
216 230 316	1 1/2	CHB2163*	
	2	CHB2164*	
	2 7/16	CHB2165*	
	3	CHB2166*	
	3 7/16	CHB2167*	

\*H — Hard Iron \*W — Wood \*BR — Bronze \*U — UHMW \*G — Gatke \*ER — Ertalyte® \*C — Ceramic \*ST — Stellite \*UR — Urethane

\*Oil hole is furnished on hard iron and bronze standard.

Hanger Types	Shaft Diameter	Part Number	Bearing
220 226 326 30	1	CHB2202*	
	1 1/2	CHB2203*	
	2	CHB2204*	
	2 7/16	CHB2205*	
	3	CHB2206*	
	3 7/16	CHB2207*	

\*H — Cast Hard Iron with oil hole \*W — Wood \*N — Nylatron \*P — HDPE \*G — Gatke \*ER — Ertalyte®

\*MHI — Martin Hard iron (oil impregnated) \*MCB — Melamine (Furnished Less Flanges) \*C — Ceramic \*WN — White Nylon \*WI — White Iron

\*MBR — Martin Bronze (oil impregnated) \*U — UHMW \*UR — Urethane

Hanger Types	Shaft Diameter	Part Number	Bearing
60 Ball Bearing 70 Ball Bearing	1 1/2	CHB603	
	2	CHB604	
	2 7/16	CHB605	
	3	CHB606	
	3 7/16	CHB607	

Note: New style bearings are available with slinger shield one side.

Hanger Types	Shaft Diameter	Part Number	Bearing
18B 19B	1 1/2	CHB18B3*	
	2	CHB18B4*	
	2 7/16	CHB18B5*	
	3	CHB18B6*	
	3 7/16	CHB18B7*	

\*W — Wood \*H — Hard Iron \*N — Nylatron \*G — Gatke

Note: Furnished as bottom cap only.

Ertalyte® is Registered Trademarks of Quadrant Engineered Plastic Products.