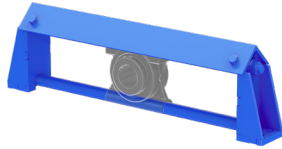




# TAKE-UP FRAME Nomenclature

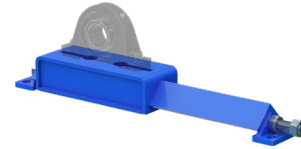


**Top Angle**

Take-Up Frame **MTA 20 - 12**  
MTA Top Angle

Frame Size  
10, 20, 30, 40, 50, 60

Travel Distance 2-3% of conveyor length in inches  
12 to 24 MTA10, MTA20  
12 to 48 MTA30, MTA40, MTA50, MTA60

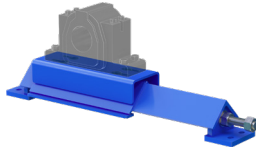


**Light/Medium**

Take-Up Frame **MLD 45 - 24**  
MLD Light/Medium

Frame Size  
10, 20, 30, 40, 45, 50

Travel Distance 2-3% of conveyor length in inches  
6 to 48

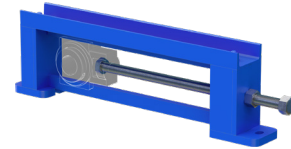


**Heavy-Duty**

Take-Up Frame **MHD 350 - 18**  
MHD Heavy-Duty

Frame Size  
200, 250, 300, 350, 400, 500

Travel Distance 2-3% of conveyor length in inches  
12 to 36 MHD200, MHD250  
12 to 48 MHD300, MHD350, MHD400, MHD500

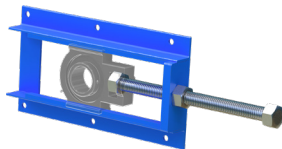


**Center Pull**

Take-Up Frame **MCP 408 - 20**  
MCP Center Pull

Frame Size  
308, 400, 408, 502, 515, 613, 810

Travel Distance 2-3% of conveyor length in inches  
12 to 36



**Wide Slot**

Take-Up Frame **MWS 502 - 30**  
MWS Wide Slot

Frame Size  
300, 308, 400, 502, 515, 608

Travel Distance 2-3% of conveyor length in inches  
6 to 24 MWS300, MWS308  
6 to 30 MWS400, MWS502, MWS515, MWS608



**Tube**

Take-Up Frame **MTTU 10 - 24**  
MTTU Tube

Frame Size  
10, 25, 30, 35, 40, 50

Travel Distance 2-3% of conveyor length in inches  
6 to 12 MTTU10 6 to 24 MTTU30 12 to 48 MTTU40, MTTU45  
6 to 18 MTTU20 9 to 24 MTTU35



See bearing compatibility for the shaft size range per bearing type

[martinsprocket.com](http://martinsprocket.com) - 817.258.3000